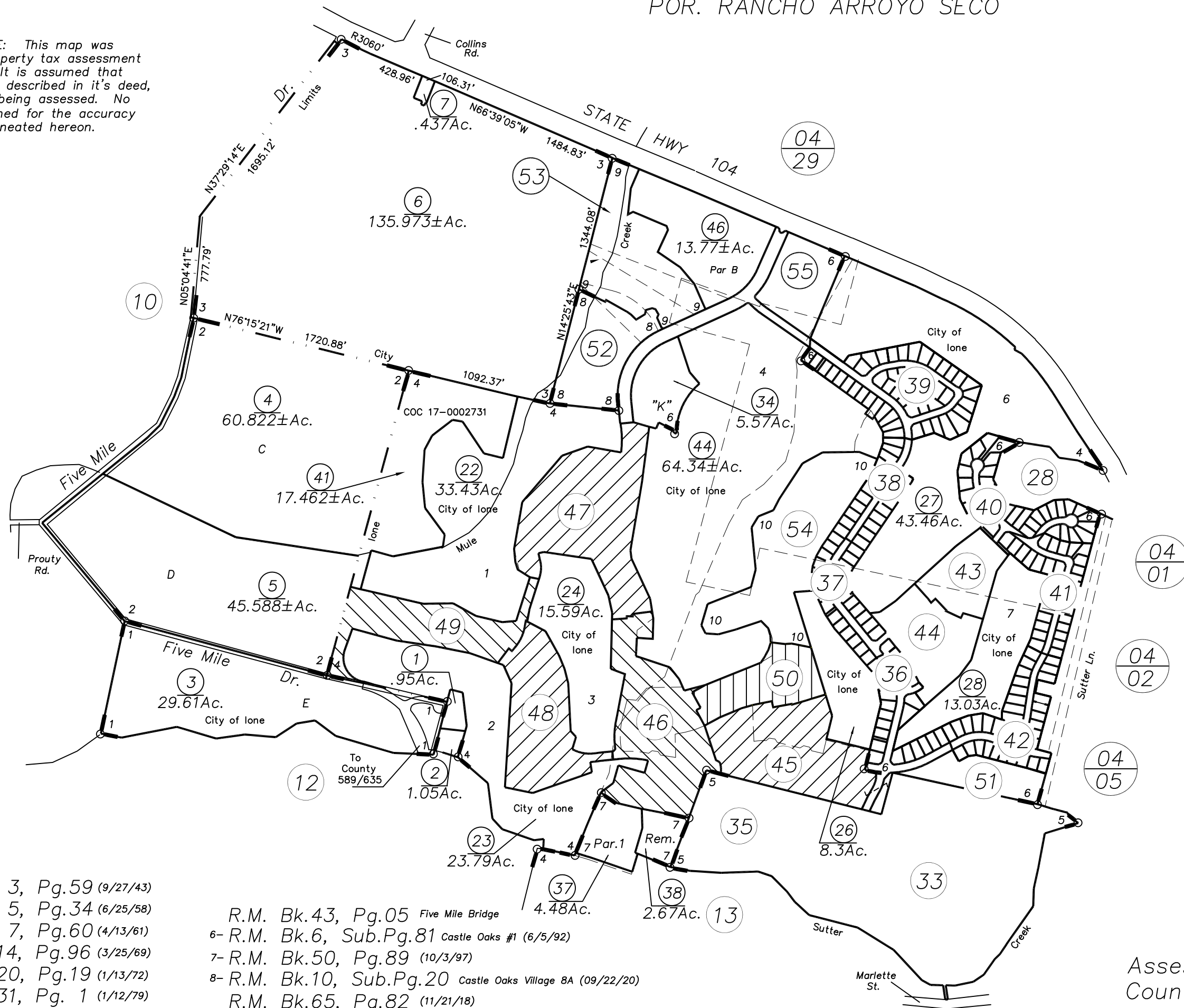
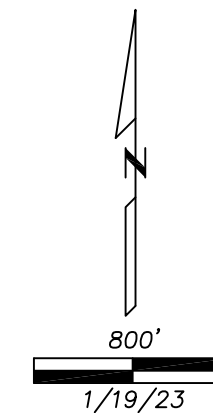


POR. RANCHO ARROYO SECO

05-32

IMPORTANT NOTE: This map was prepared for property tax assessment purposes only. It is assumed that the property, as described in it's deed, is the property being assessed. No liability is assumed for the accuracy of the data delineated hereon.



- 1- R.M. Bk. 3, Pg.59 (9/27/43)
- R.M. Bk. 5, Pg.34 (6/25/58)
- R.M. Bk. 7, Pg.60 (4/13/61)
- 2- R.M. Bk.14, Pg.96 (3/25/69)
- 3- R.M. Bk.20, Pg.19 (1/13/72)
- 4- R.M. Bk.31, Pg. 1 (1/12/79)
- 5- R.M. Bk.31, Pg.24 (3/5/79)

- R.M. Bk.43, Pg.05 Five Mile Bridge
- 6- R.M. Bk.6, Sub.Pg.81 Castle Oaks #1 (6/5/92)
- 7- R.M. Bk.50, Pg.89 (10/3/97)
- 8- R.M. Bk.10, Sub.Pg.20 Castle Oaks Village 8A (09/22/20)
- R.M. Bk.65, Pg.82 (11/21/18)
- 9- R.M. Bk.10, Sub.Pg.32 Castle Oaks Village 8A (04/04/21)
- 10- R.M. Bk.10, Sub.Pg.36 Castle Oaks Village 6 (07/23/21)

Assessor's Map Bk.05, Pg.32
County of Amador, Calif.

48