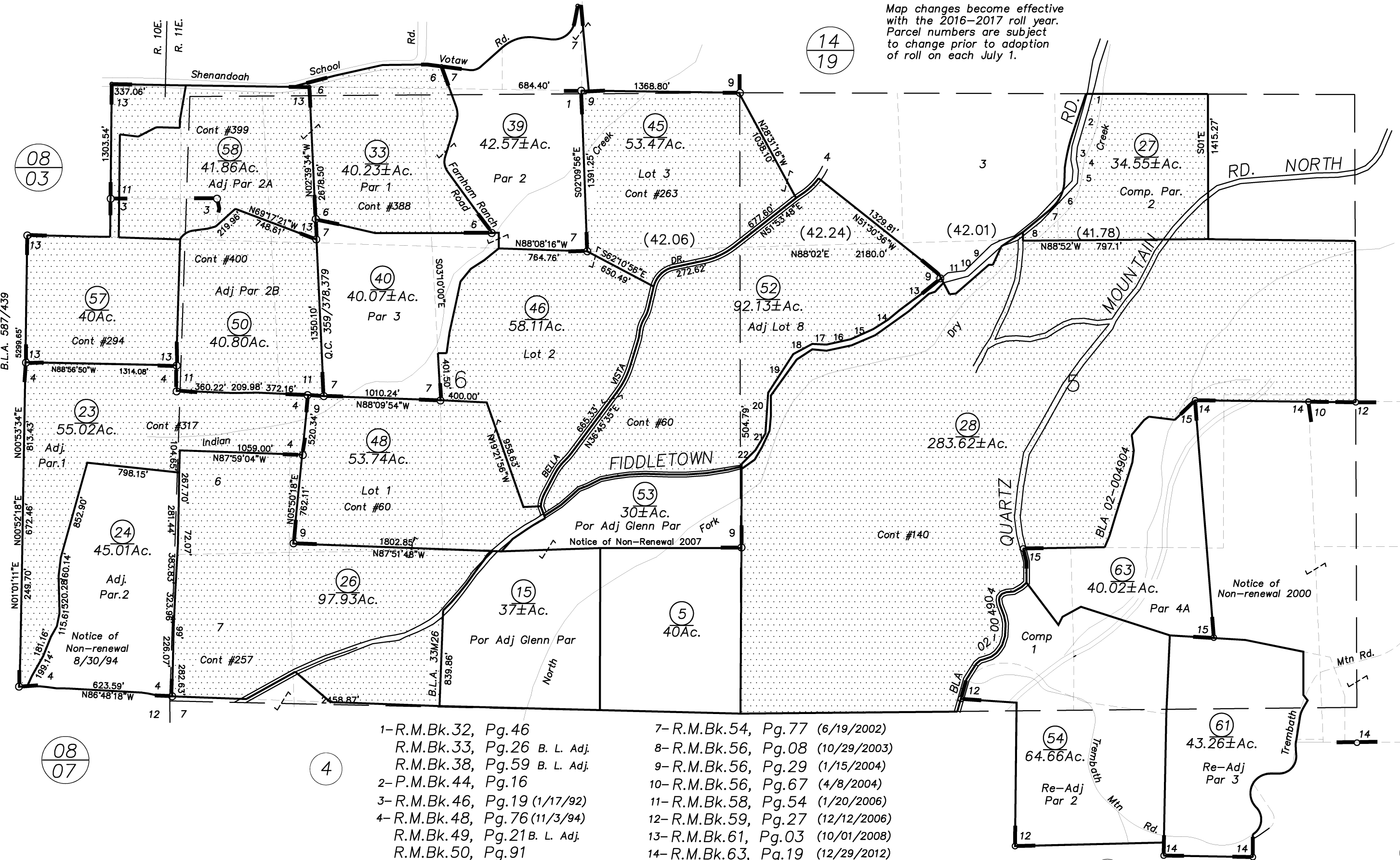


Map changes become effective with the 2016-2017 roll year. Parcel numbers are subject to change prior to adoption of roll on each July 1.



800'
03/01/2018



- 2
- 1) N05°27'E 31.97'
 - 2) N18°59'E 573.3'
 - 3) N01°19'E 92.11'
 - 4) N07°18'W 188.66'
 - 5) N31°14'E 77.08'
 - 6) N46°31'E 285.04'
 - 7) N51°39'E 200.00'
 - 8) N53°07'E 282.64'
 - 9) S48°50'W 377.35'
 - 10) S55°21'W 41.61'

- 11) S83°41'W 149.82'
- 12) S48°04'W 175.64'
- 13) S53°44'W 294.65'
- 14) S55°23'W 313.23'
- 15) S65°49'W 227.17'
- 16) S77°25'W 200.61'
- 17) N79°30'W 140.61'
- 18) S57°02'W 185.89'
- 19) S34°40'W 389.71'
- 20) S02°38'W 343.56'
- 21) S25°38'W 196.41'
- 22) S36°25'W 57.66'

- 1-R.M.Bk.32, Pg.46
- 2-R.M.Bk.33, Pg.26 B. L. Adj.
- 3-R.M.Bk.38, Pg.59 B. L. Adj.
- 4-P.M.Bk.44, Pg.16
- 5-R.M.Bk.46, Pg.19 (1/17/92)
- 6-R.M.Bk.48, Pg.76 (11/3/94)
- 7-R.M.Bk.49, Pg.21 B. L. Adj.
- 8-R.M.Bk.50, Pg.91
- 9-R.M.Bk.52, Pg.08 (2/19/99)
- 10-R.M.Bk.52, Pg.27 (3/29/99)
- 11-R.M.Bk.54, Pg.77 (6/19/2002)
- 12-R.M.Bk.56, Pg.08 (10/29/2003)
- 13-R.M.Bk.56, Pg.29 (1/15/2004)
- 14-R.M.Bk.56, Pg.67 (4/8/2004)
- 15-R.M.Bk.58, Pg.54 (1/20/2006)
- 16-R.M.Bk.59, Pg.27 (12/12/2006)
- 17-R.M.Bk.61, Pg.03 (10/01/2008)
- 18-R.M.Bk.63, Pg.19 (12/29/2012)
- 19-R.M.Bk.65, Pg.30 (10/31/2017)

08
03

14
19

2

B.L.A. 587/439

08
07

4

32

63