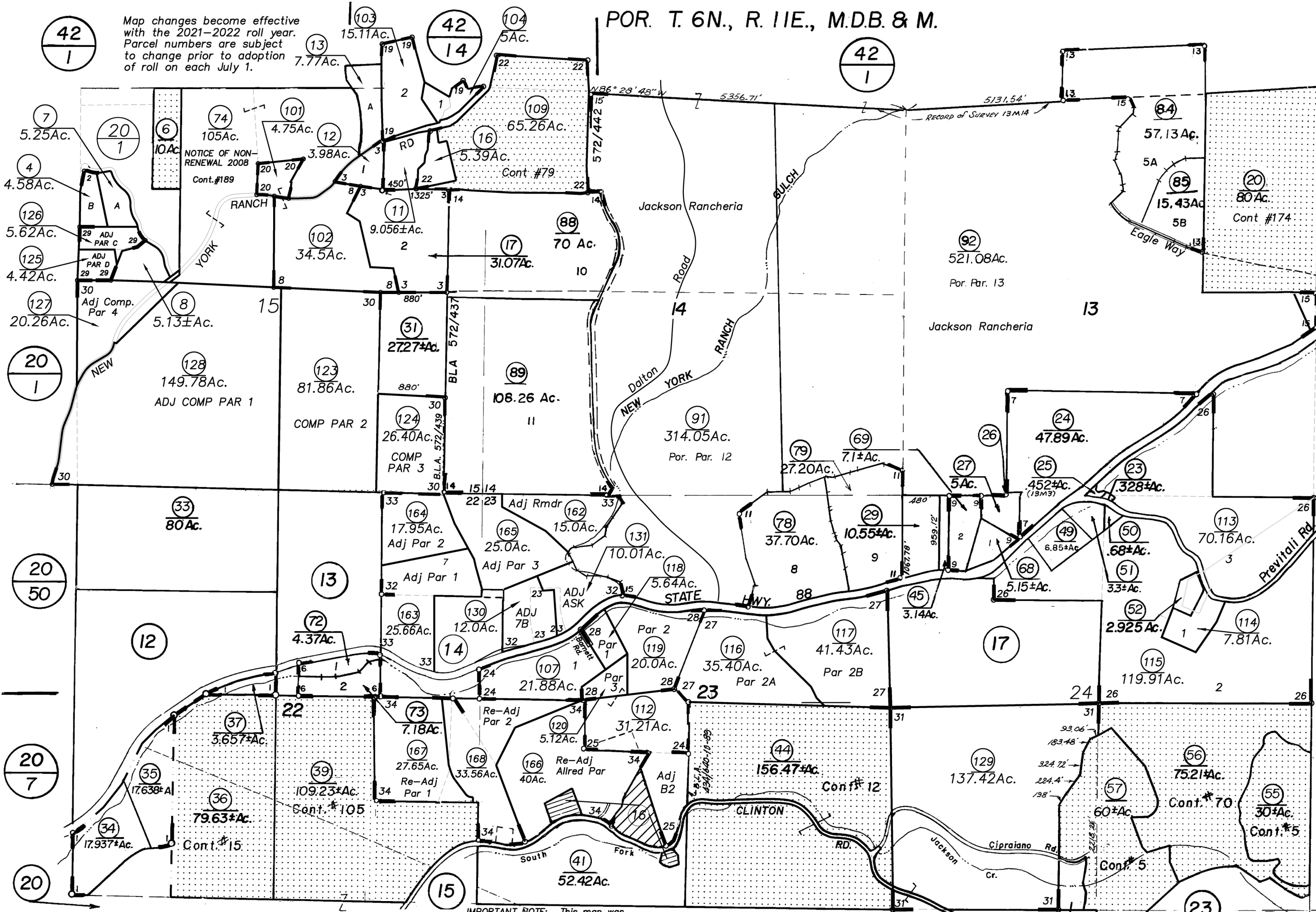
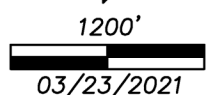


Map changes become effective with the 2021-2022 roll year. Parcel numbers are subject to change prior to adoption of roll on each July 1.



36
1



03/23/2021

- R.M.Bk. 6, Pg.66
- R.M.Bk. 7, Pg.96
- R.M.Bk.13, Pg. 3
- 1-R.M.Bk.14, Pg.36
- R.M.Bk.15, Pg.11
- R.M.Bk.15, Pg.49
- 2-R.M.Bk.15, Pg.94
- 3-R.M.Bk.17, Pg.57
- 4-R.M.Bk.18, Pg.40
- R.M.Bk.12, Pg.40
- R.M.Bk.20, Pg.67
- R.M.Bk.36, Pg.24
- R.M.Bk.25, Pg.84
- 6-R.M.Bk.37, Pg.69
- Unrec.Sur.2443
- R.M.Bk.28, Pg.84
- R.M.Bk.30, Pg.51
- 7-P.M.Bk.33, Pg.75
- R.M.Bk.33, Pg.78
- 8-P.M.Bk.34, Pg.96
- 9-R.M.Bk.35, Pg.80
- R.M.Bk.29, Pg.90
- R.M.Bk.38, Pg.10
- 10-R.M.Bk.41, Pg.66
- 11-R.M.Bk.41, Pg.86
- 12-R.M.Bk.42, Pg.35
- 13-P.M.Bk.43, Pg.57
- 14-R.M.Bk.44, Pg. 4
- 15-R.M.Bk.45, Pg.39
- 16-R.M.Bk.45, Pg.99
- Case No.15932
- 17-R.M.Bk.46, Pg.44
- 18-R.M.Bk.46, Pg.55
- 19-R.M.Bk.47, Pg.11
- 20-R.M.Bk.47, Pg.25
- 21-R.M.Bk.47, Pg.88
- 22-R.M.Bk.48, Pg.53
- 23-R.M.Bk.48, Pg.58
- 24-R.M.Bk.48, Pg.73
- 25-R.M.Bk.55, Pg.16
- 26-R.M.Bk.55, Pg.33
- 27-R.M.Bk.56, Pg.83
- 28-R.M.Bk.59, Pg.91
- 29-R.M.Bk.58, Pg.03
- 30-R.M.Bk.61, Pg.58
- 31-R.M.Bk.63, Pg.78 (11/04/13)
- 32-R.M.Bk.66, Pg.20 (11/27/19)
- 33-R.M.Bk.66, Pg.48 (07/21/20)
- 34-R.M.Bk.66, Pg.44 (05/14/20)

Melody Oaks
44-11-0-072
Sp.13 70
10 71

60 R/W in ditches in
Sec. 13 & 24 T6R11

IMPORTANT NOTE: This map was prepared for property tax assessment purposes only. It is assumed that the property, as described in its deed, is the property being assessed. No liability is assumed for the accuracy of the data delineated hereon.