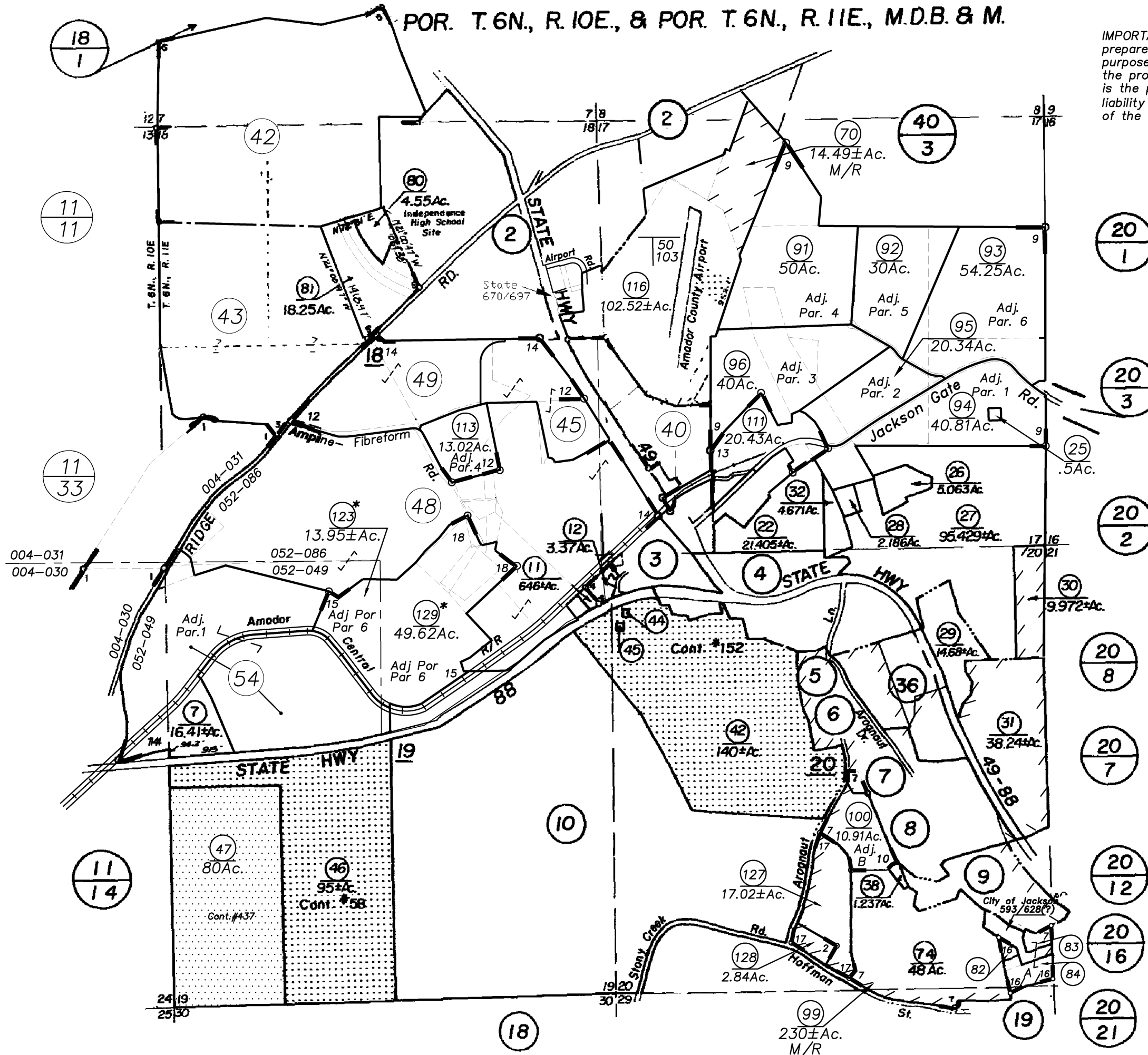
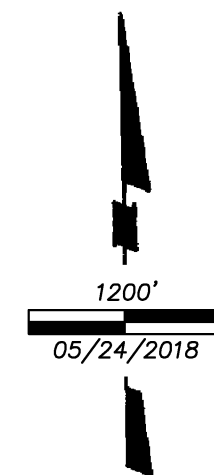


IMPORTANT NOTE: This map was prepared for property tax assessment purposes only. It is assumed that the property, as described in its deed, is the property being assessed. No liability is assumed for the accuracy of the data delineated hereon.

Map changes become effective with the 2009-2010 roll year. Parcel numbers are subject to change prior to adoption of roll on each July 1.



- Unrec. Sur. 1271
- R.M. Bk.04, Pg.61
- R.M. Bk.04, Pg.79
- R.M. Bk.04, Pg.86
- R.M. Bk.04, Pg.90
- R.M. Bk.05, Pg.24
- R.M. Bk.06, Pg.30
- R.M. Bk.06, Pg.49
- R.M. Bk.06, Pg.96
- R.M. Bk.07, Pg.28
- R.M. Bk.09, Pg.07
- R.M. Bk.09, Pg.41
- R.M. Bk.10, Pg.78
- R.M. Bk.11, Pg.05
- R.M. Bk.11, Pg.06
- R.M. Bk.12, Pg.38
- R.M. Bk.19, Pg.73
- R.M. Bk.26, Pg.44
- R.M. Bk.26, Pg.53
- P.M. Bk.30, Pg.23
- R.M. Bk.32, Pg.20
- R.M. Bk.36, Pg.08
- R.M. Bk.36, Pg.69 B.LAdj
- 1- P.M. Bk.37, Pg.83
- R.M. Bk.38, Pg.90
- 2- R.M. Bk.39, Pg.27
- 3- P.M. Bk.39, Pg.39 B.LAdj
- 4- R.M. Bk.39, Pg.69 B.LAdj
- 5- R.M. Bk.39, Pg.73 B.LAdj
- 6- R.M. Bk.42, Pg.30 B.LAdj
- 7- R.M. Bk.44, Pg.26 B.LAdj (1/30/90)
- 8- R.M. Bk.44, Pg.35 B.LAdj (2/16/90)
- R.M. Bk.47, Pg.90 Amador Rapid Transit
- 9- R.M. Bk.47, Pg.100 (12/1/93)
- R.M. Bk.49, Pg.46 Amador Rapid Transit
- R.M. Bk.49, Pg.88 (4/23/96)
- 10- R.M. Bk.50, Pg.07 (7/23/96)
- 11- R.M. Bk.51, Pg.07 (12/10/97)
- 12- R.M. Bk.52, Pg.06 (2/08/99)
- 13- R.M. Bk.52, Pg.24 (3/16/99)
- 14- R.M. Bk.54, Pg.38 (12/11/2002)
- R.M. Bk.57, Pg.22 (10/28/2004)
- 15- R.M. Bk.60, Pg.24 (12/06/2007)
- 16- R.M. Bk.57, Pg.78 (05/12/2005)
- 17- R.M. Bk.59, Pg.21 (10/06/2006)
- 18- R.M. Bk.64, Pg.46 (09/30/2015)