

AMADOR COUNTY TAX COLLECTOR

**2017 TAX SALE PARCELS
(MARCH 15, 2017)**

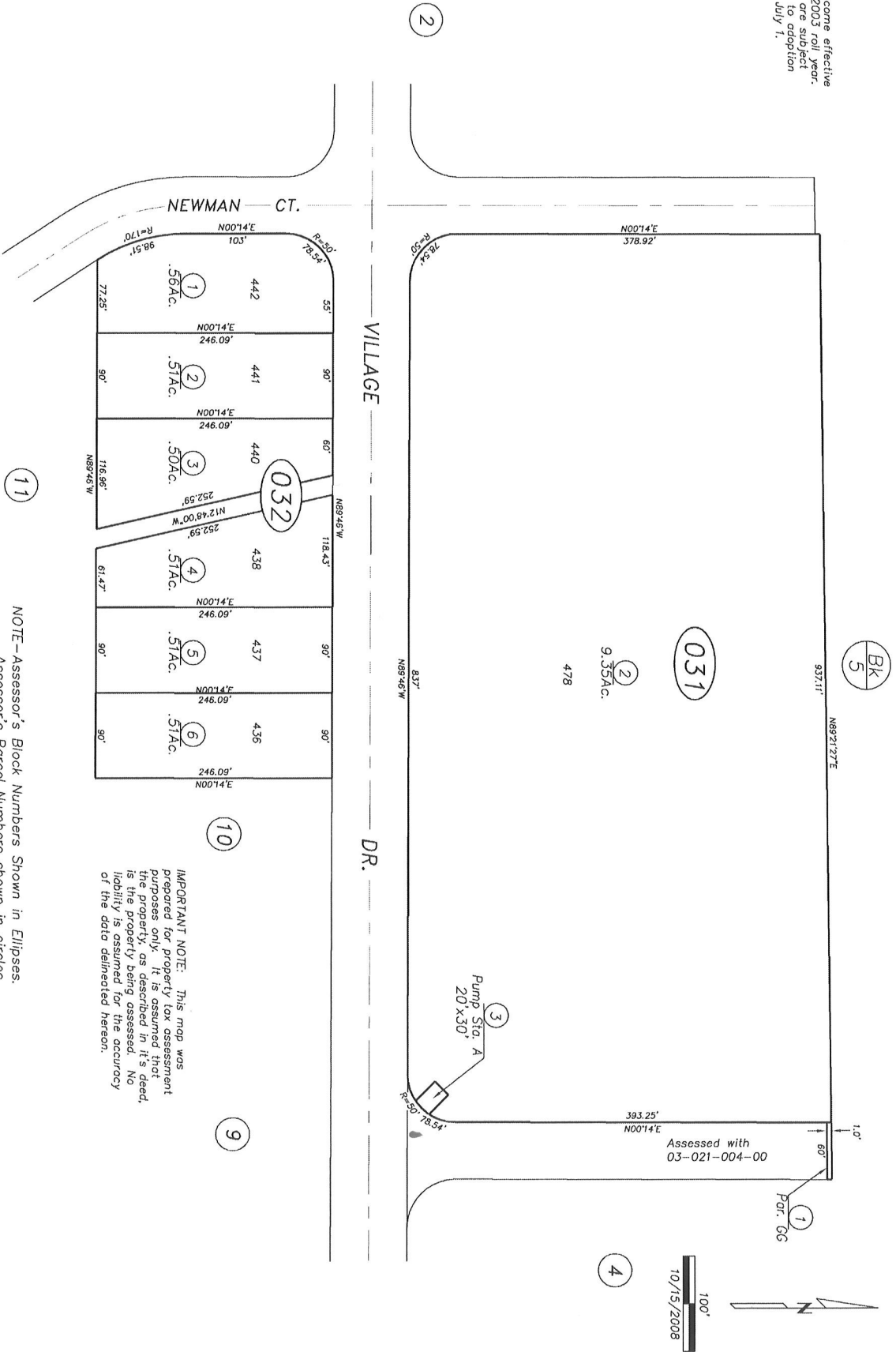
ASSESSOR'S PARCEL MAPS

TSMAPS

POR. SEC. 22, T.5N., R.9E., M.D.B.&M.

3-03

Map changes become effective with the 2002-2003 roll year. Parcel numbers are subject to change prior to adoption of roll on each July 1.

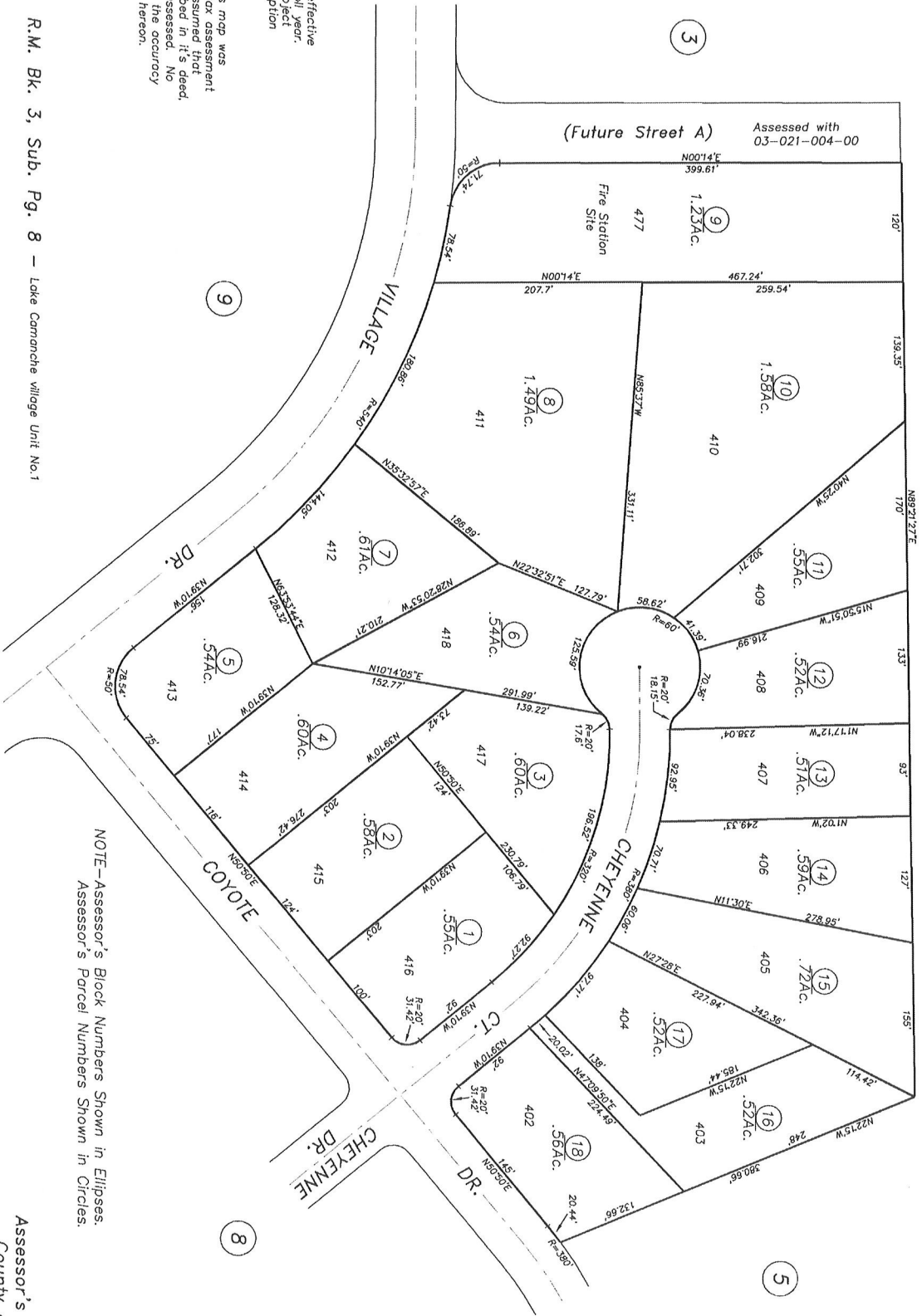


100'
10/15/2008

NOTE-Assessor's Block Numbers Shown in Ellipses.
Assessor's Parcel Numbers shown in circles.

IMPORTANT NOTE: This map was prepared for property tax assessment purposes only. It is assumed that the property, as described in it's deed, is the property being assessed. No liability is assumed for the accuracy of the data delineated hereon.

BK
5



Map changes become effective with the 2005-2006 roll year. Parcel numbers are subject to change prior to adoption of roll on each July 1.

IMPORTANT NOTE: This map was prepared for property tax assessment purposes only. It is assumed that the property, as described in it's deed, is the property being assessed. No liability is assumed for the accuracy of the data delineated hereon.

NOTE-Assessor's Block Numbers Shown in Ellipses.
Assessor's Parcel Numbers Shown in Circles.

R.M. Bk. 3, Sub. Pg. 8 - Lake Comanche village Unit No.1

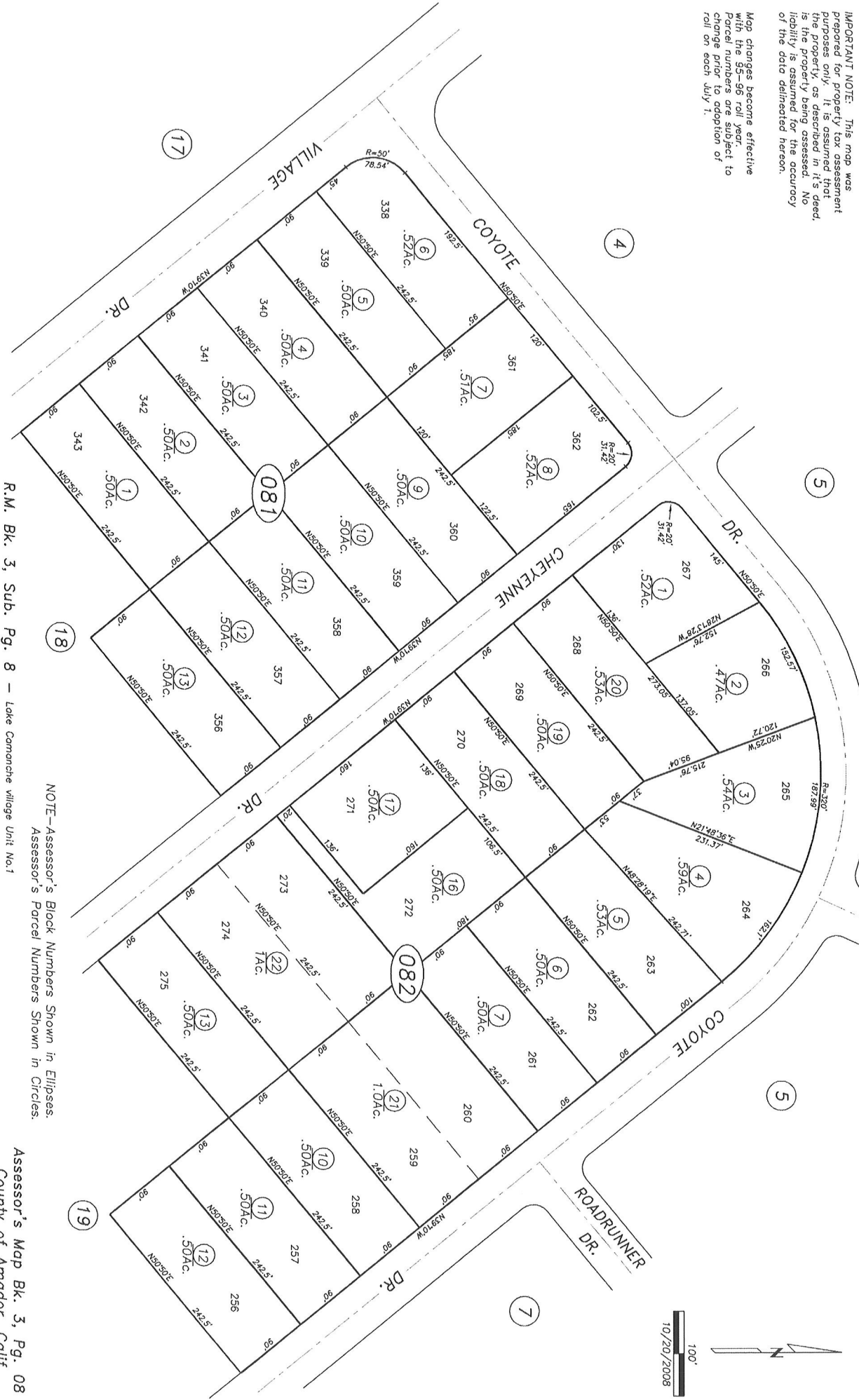
Assessor's Map Bk. 3, Pg. 04
County of Amador, Calif.

IMPORTANT NOTE: This map was prepared for property tax assessment purposes only. It is assumed that the property, as described in it's deed, is the property being assessed. No liability is assumed for the accuracy of the data delineated hereon.

POR. SEC. 22, T.5N, R.9E, M.D.B.&M.

Tax Area Code
52-038

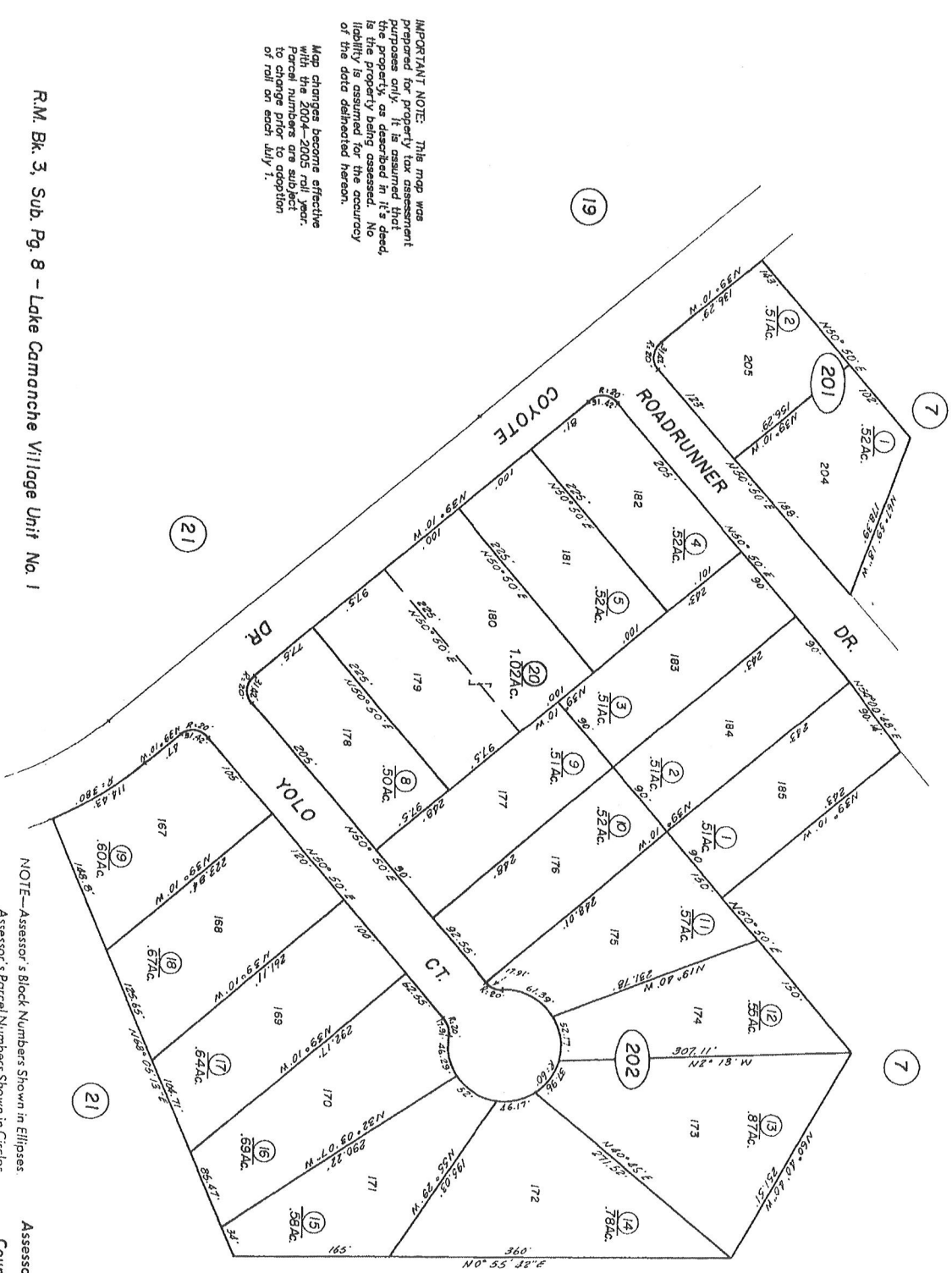
3-08



R.M. Bk. 3, Sub. Pg. 8 — Lake Camanche village Unit No.1

NOTE—Assessor's Block Numbers Shown in Ellipses.
Assessor's Parcel Numbers Shown in Circles.

Assessor's Map Bk. 3, Pg. 08
County of Amador, Calif.



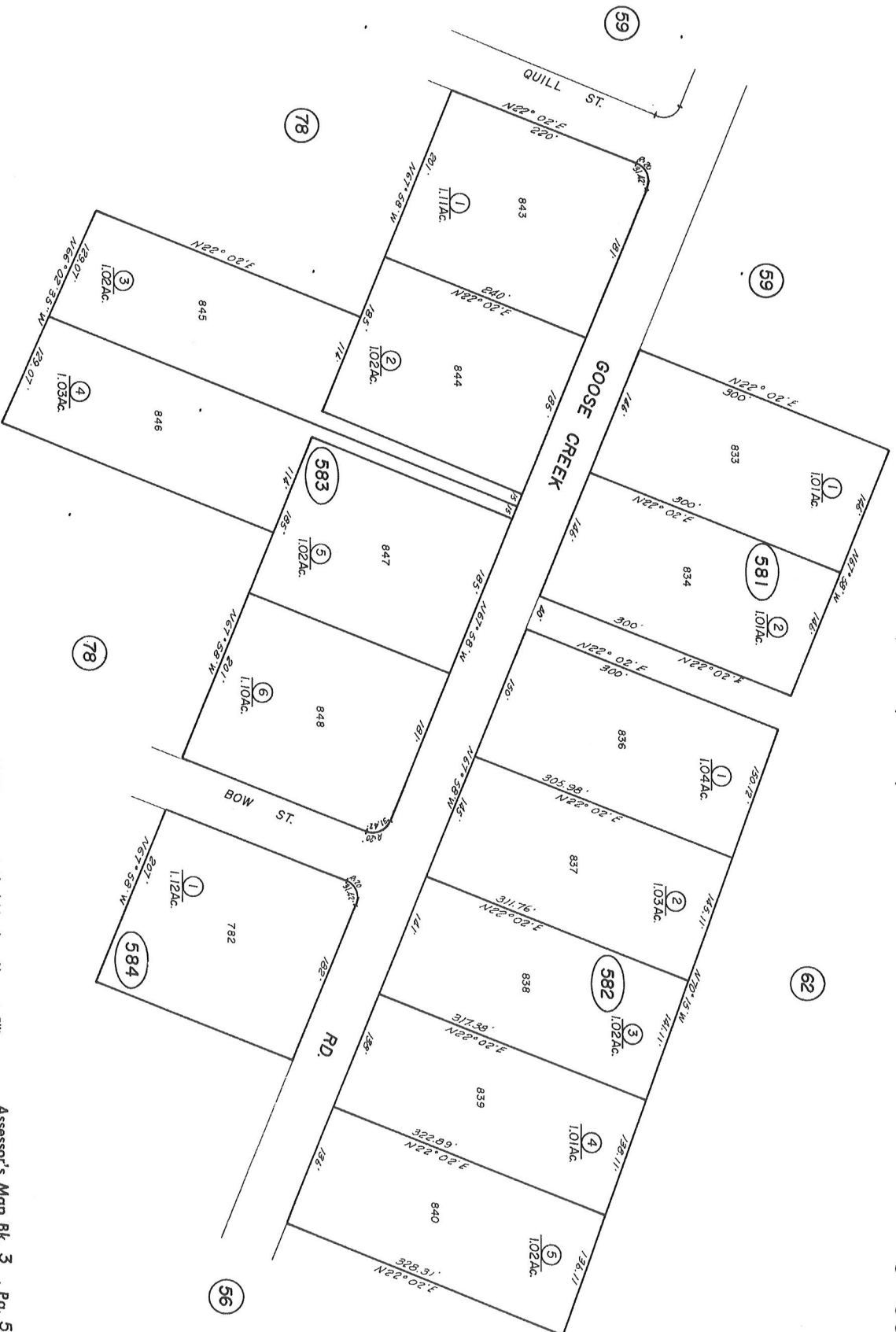
IMPORTANT NOTE: This map was prepared for property tax assessment purposes only. It is not intended to be used for any other purpose. The property is shown as described in its deed. No liability is assumed for the accuracy of the data delineated hereon.

Map changes become effective with the 2004-2005 roll year. Parcel numbers are subject to change prior to adoption of roll on each July 1.

R.M. Bk. 3, Sub. Pg. 8 - Lake Camanche Village Unit No. 1

NOTE - Assessor's Block Numbers Shown in Ellipses
Assessor's Parcel Numbers Shown in Circles

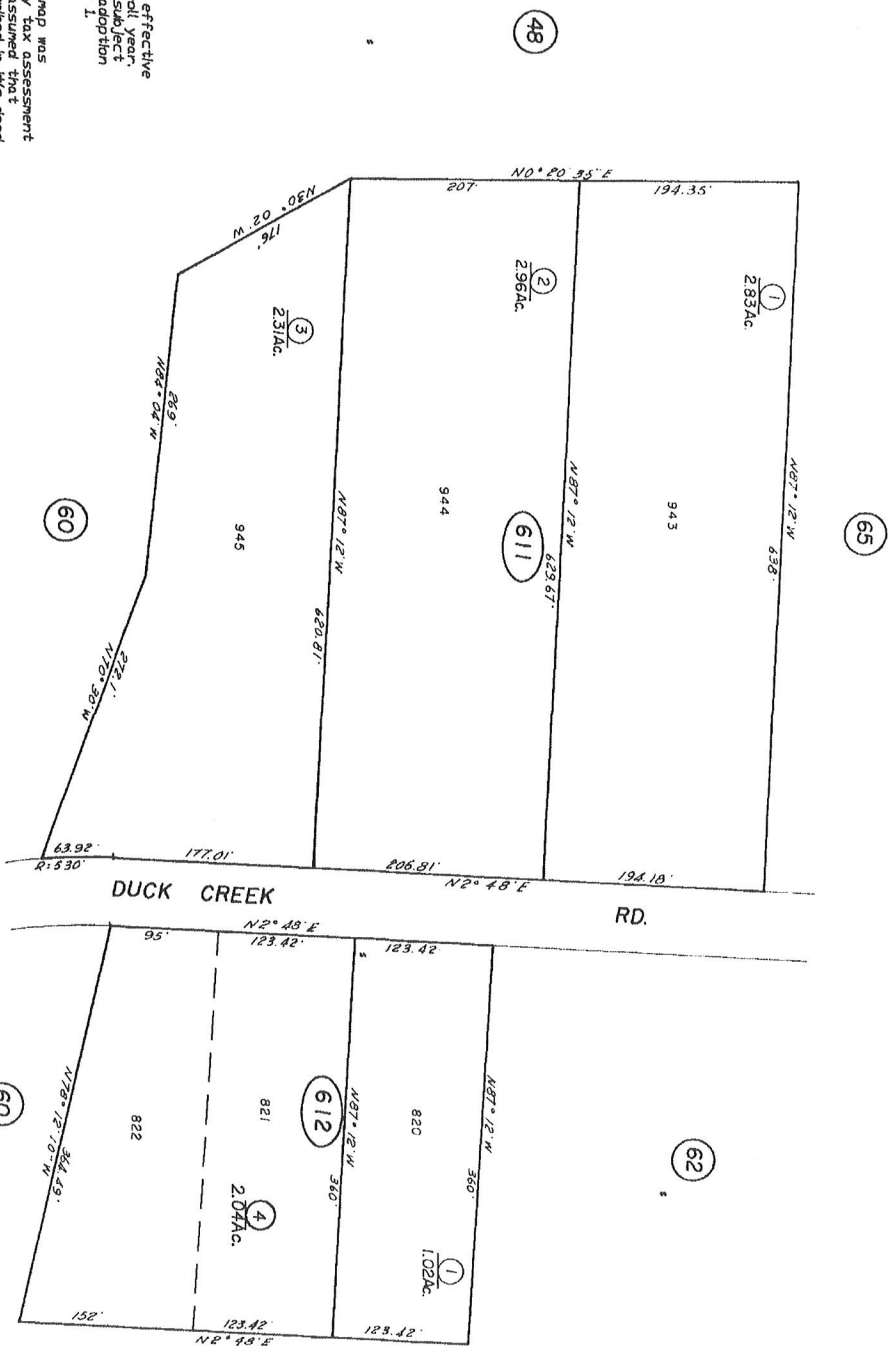
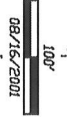
Assessor's Map Bk. 3, Pg. 20
County of Amador, Calif.



R.M. Bk. 3, Sub. Pg. 37 - Lake Camanche Village Unit No. 3A

NOTE - Assessor's Block Numbers Shown in Ellipses.
Assessor's Parcel Numbers Shown in Circles.

Assessor's Map Bk. 3, Pg. 58
County of Amador, Calif.



Map changes become effective with the 2002-2003 roll year. Parcel numbers are subject to change prior to adoption of roll on each July 1.

IMPORTANT NOTE: This map was prepared for property tax assessment purposes only. It is assumed that the property, as described in this deed, is the property being assessed. No liability is assumed for the accuracy of the data delineated hereon.

R.M. Bk. 3, Sub Pg. 37 - Lake Comanche Village Unit No. 3A

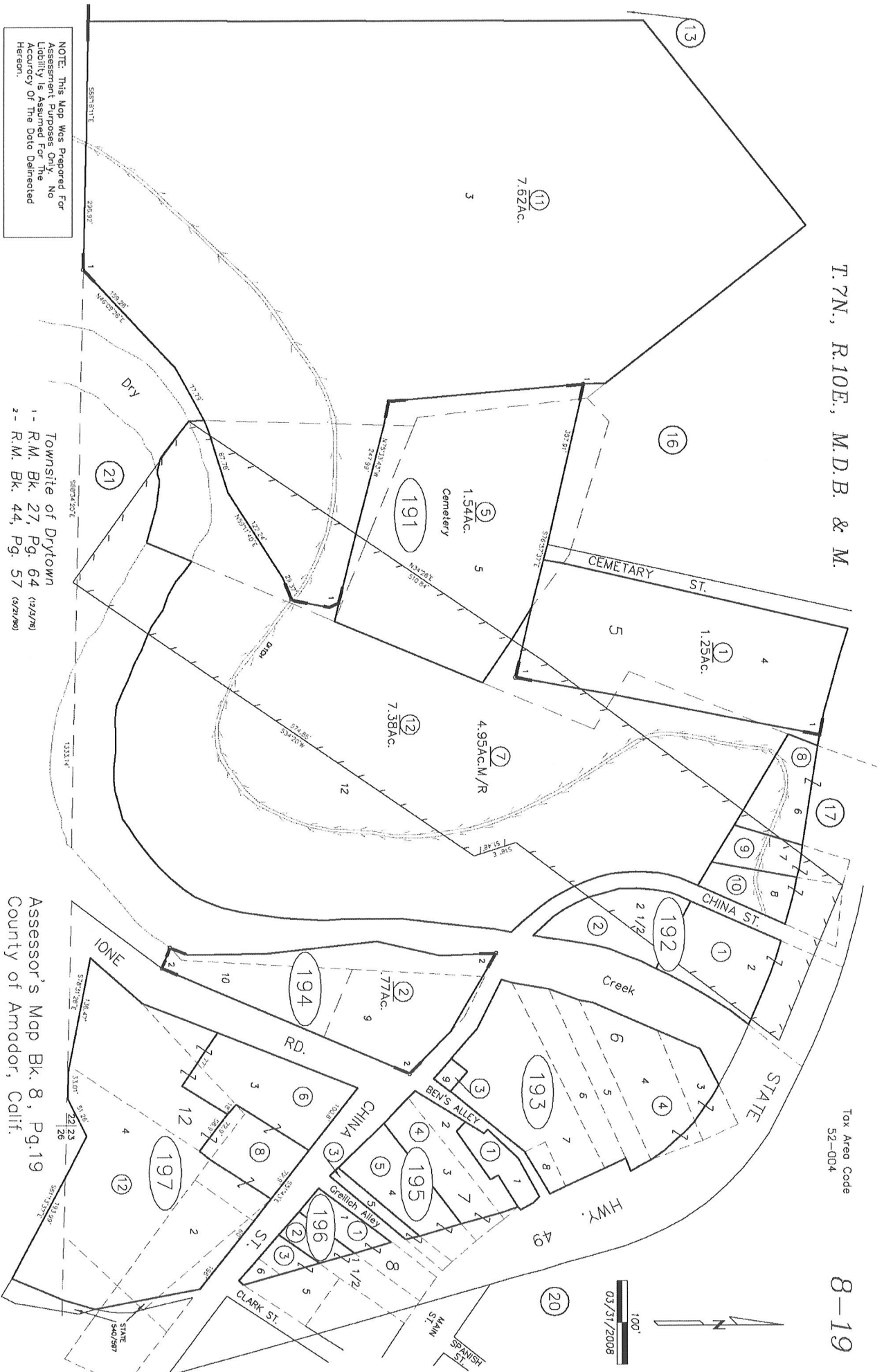
NOTE—Assessor's Block Numbers Shown in Ellipses. Assessor's Parcel Numbers Shown in Circles.

Assessor's Map Bk. 3, Pg. 61
County of Andrew - 1-11-12

T. 7N., R. 10E., M.D.B. & M.

Tox Area Code
52-004

8-19



NOTE: This Map Was Prepared For Assessment Purposes Only. No Liability Is Assumed For The Accuracy Of The Data Delineated Hereon.

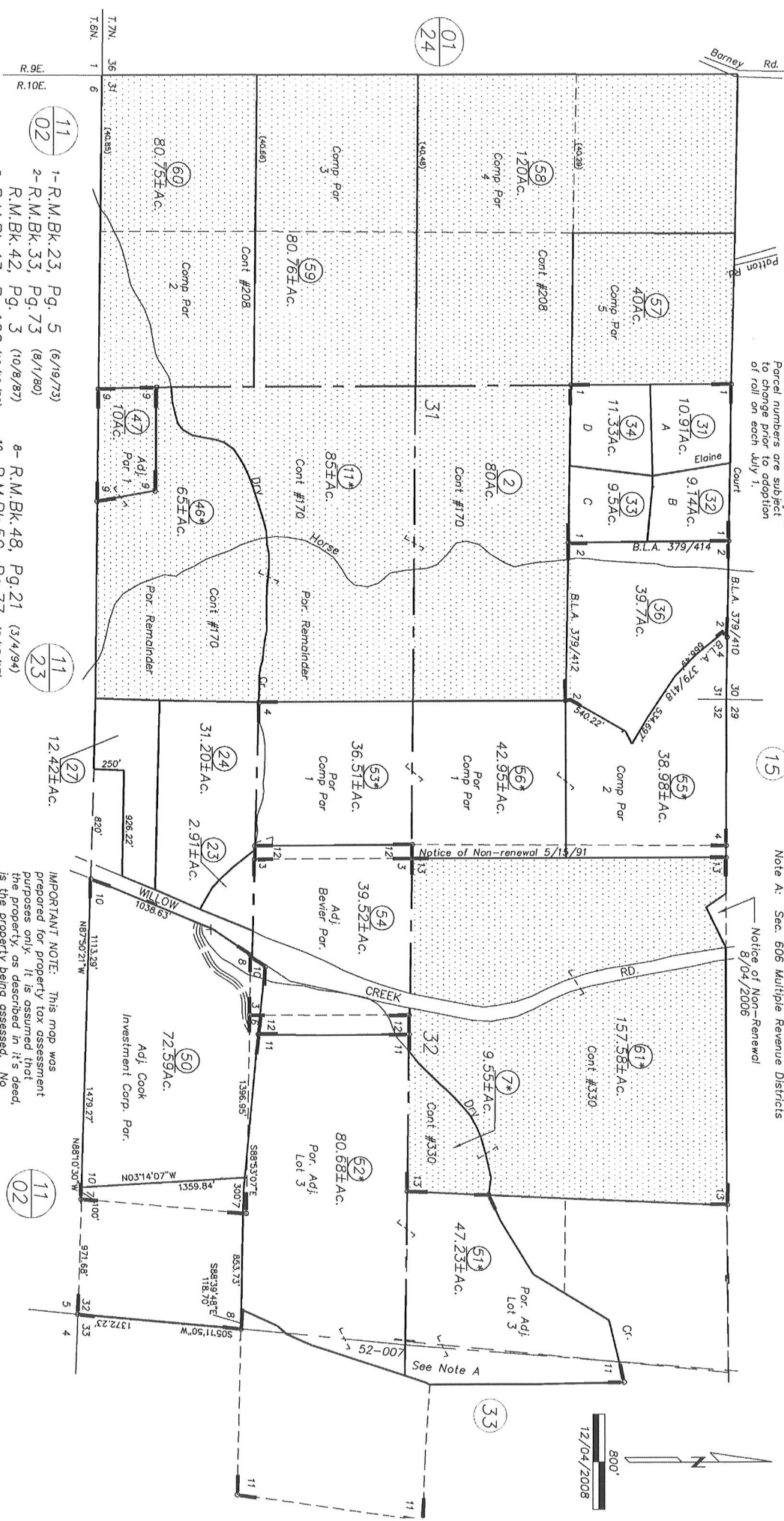
Townsite of Drytown
1- R.M. Bk. 27, Pg. 64 (12/17/78)
2- R.M. Bk. 44, Pg. 57 (12/17/80)

Assessor's Map Bk. 8, Pg. 19
County of Amador, Calif.

ALL SEC. 31, POR. SEC. 32, T.7N., R.10E., M.D.B. & M.

Map changes become effective with the 2007-2008 roll year. Parcel numbers are subject to change prior to adoption of roll on each July 1.

Note A: Sec. 606 Multiple Revenue Districts
Notice of Non-Renewal 8/04/2006



- 1-R.M.Bk.23, Pg. 5 (6/19/73)
- 2-R.M.Bk.33, Pg. 73 (8/1/80)
- 3-R.M.Bk.42, Pg. 3 (10/8/87)
- 4-R.M.Bk.43, Pg. 100 (10/10/89)
- 5-R.M.Bk.44, Pg. 45 (4/20/90)
- 6-R.M.Bk.45, Pg. 60 (6/20/90)
- 7-R.M.Bk.47, Pg. 1 (12/10/92)
- 8-R.M.Bk.47, Pg. 97 (11/19/93)

- 9-Adj. 9 Per. 1
- 10-R.M.Bk.48, Pg. 21 (3/4/94)
- 11-R.M.Bk.50, Pg. 77 (8/15/97)
- 12-R.M.Bk.50, Pg. 80 (9/4/97)
- 13-R.M.Bk.51, Pg. 35 (4/10/98)
- 14-R.M.Bk.52, Pg. 70 (8/16/1999)
- 15-R.M.Bk.59, Pg. 14 (8/10/2006)

12.42±AC.
250'
926.22'
920'
1039.03'
1113.29'
1387.50±21'W
1479.27'
1031.00'W
1031.00'W
1372.23'
32'
33'4'5'6'7'8'9'10'11'12'13'14'15'16'17'18'19'20'21'22'23'24'25'26'27'28'29'30'31'32'33'34'35'36'37'38'39'40'41'42'43'44'45'46'47'48'49'50'51'52'53'54'55'56'57'58'59'60'61'

*Parcel split by Tax Rate Area
NOTE-Assessor's Block Numbers Shown in Ellipses.
Assessor's Parcel Numbers Shown in Circles.
Assessor's Map Bk.08, Pg.24
County of Amador, Calif.

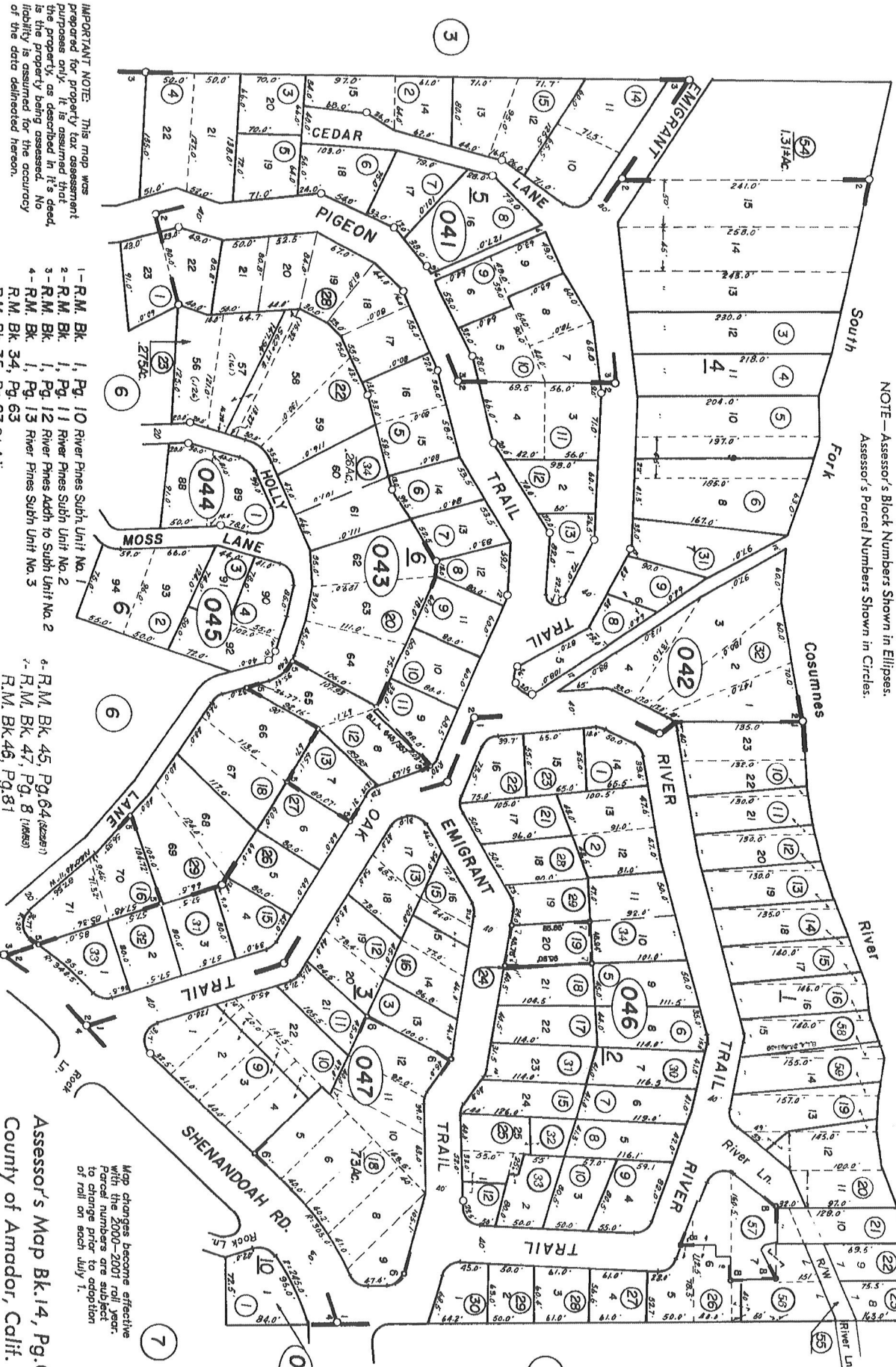
IMPORTANT NOTE: This map was prepared for property tax assessment purposes only. It is assumed that the property as described in it's deed is the property being assessed. No liability is assumed for the accuracy of the data delineated hereon.

POR. SEC. 15, T8N., R.11E., M.D.B. 8 M.

Tax Area Code
52-003

14-04

NOTE—Assessor's Block Numbers Shown in Ellipses.
Assessor's Parcel Numbers Shown in Circles.

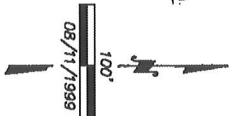


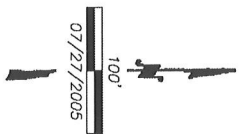
IMPORTANT NOTE: This map was prepared for property tax assessment purposes only. It is assumed that the property, as described in it's deed, is the property being assessed. No liability is assumed for the accuracy of the data delineated hereon.

- 1 - R.M. Bk. 1, Pg. 10 River Pines Subh Unit No. 1
- 2 - R.M. Bk. 1, Pg. 11 River Pines Subh Unit No. 2
- 3 - R.M. Bk. 1, Pg. 12 River Pines Subh Unit No. 2
- 4 - R.M. Bk. 1, Pg. 13 River Pines Subh Unit No. 3
- 5 - R.M. Bk. 37, Pg. 83 R.M. Bk. 37, Pg. 83 B.L.A.D.I.
- 6 - R.M. Bk. 45, Pg. 64 (R.M. Bk. 45, Pg. 64)
- 7 - R.M. Bk. 47, Pg. 8 (R.M. Bk. 47, Pg. 8)
- 8 - R.M. Bk. 46, Pg. 81 (R.M. Bk. 46, Pg. 81)
- 9 - R.M. Bk. 49, Pg. 24 (R.M. Bk. 49, Pg. 24)

Assessor's Map Bk. 14, Pg. 04
County of Amador, Calif.

Map changes become effective with the 2000-2001 roll year. Parcel numbers are subject to change prior to adoption of roll on each July 1.





Map changes become effective with the 2006-2007 roll year. Parcel numbers are subject to change prior to adoption of roll on each July 1.

IMPORTANT NOTE: This map was prepared for property tax assessment purposes only. It is assumed that the property, as described in its deed, is the property being assessed. No liability is assumed for the accuracy of the data delineated hereon.

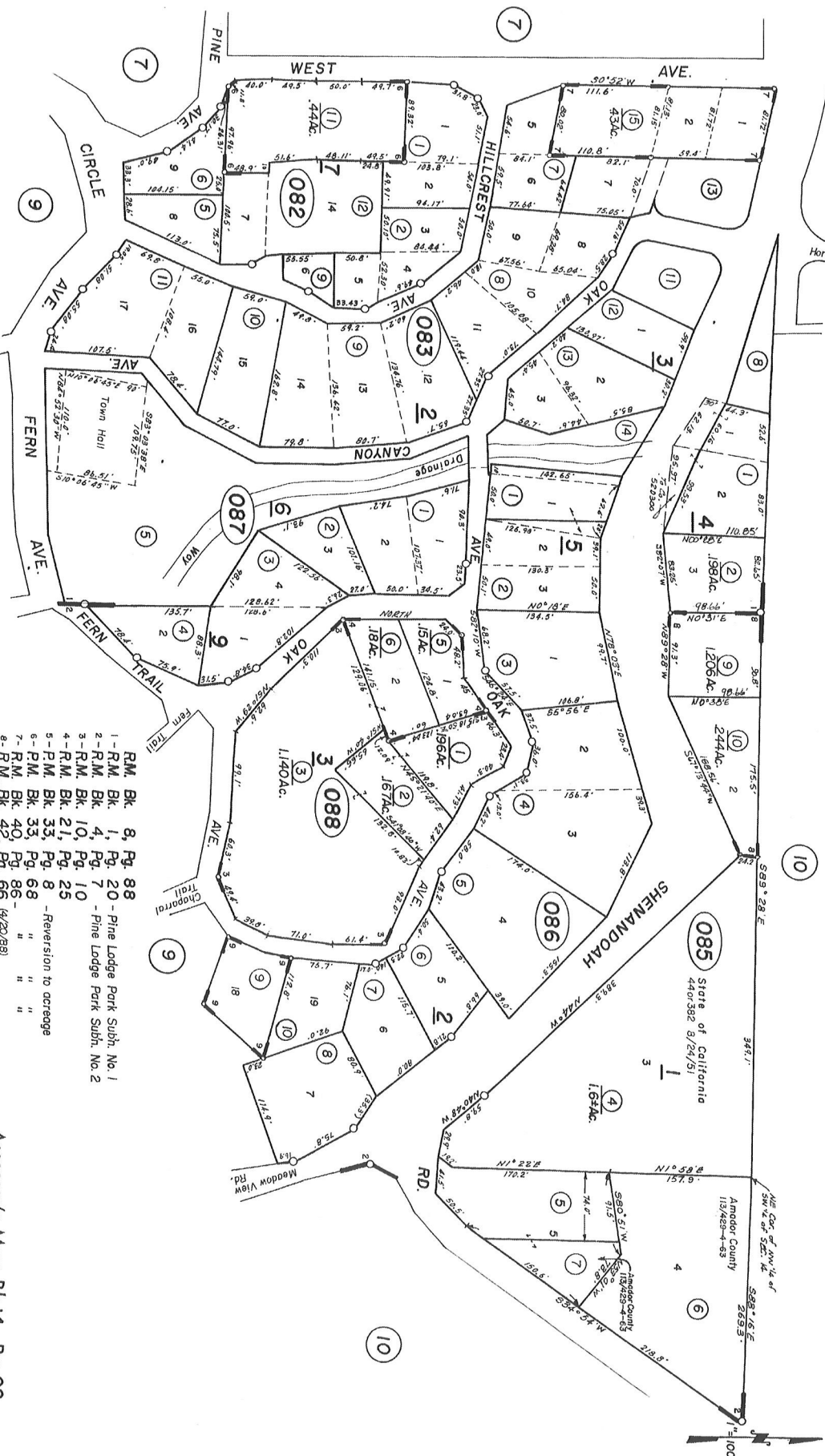
Assessor's Map Bk.14, Pg. 05
County of Amador, Calif.

NOTE--Assessor's Block Numbers Shown in Ellipses.
Assessor's Parcel Numbers Shown in Circles.

POR. SEC. 14, T8N., R.11E., M.D.B.8.M.

Tax Area Code
52-003

14-08



- RM. Bk. 8, Pg. 88
- 1 - R.M. Bk. 1, Pg. 20 - Pine Lodge Park Subh. No. 1
- 2 - R.M. Bk. 4, Pg. 7 - Pine Lodge Park Subh. No. 2
- 3 - R.M. Bk. 10, Pg. 10
- 4 - R.M. Bk. 21, Pg. 25
- 5 - P.M. Bk. 33, Pg. 8 - Reversion to acreage
- 6 - P.M. Bk. 33, Pg. 68
- 7 - R.M. Bk. 40, Pg. 66 - (4/20/85)
- 8 - R.M. Bk. 42, Pg. 66 - (4/20/85)
- 9 - R.M. Bk. 33, Pg. 83 B.L. Adj. (6/26/80)

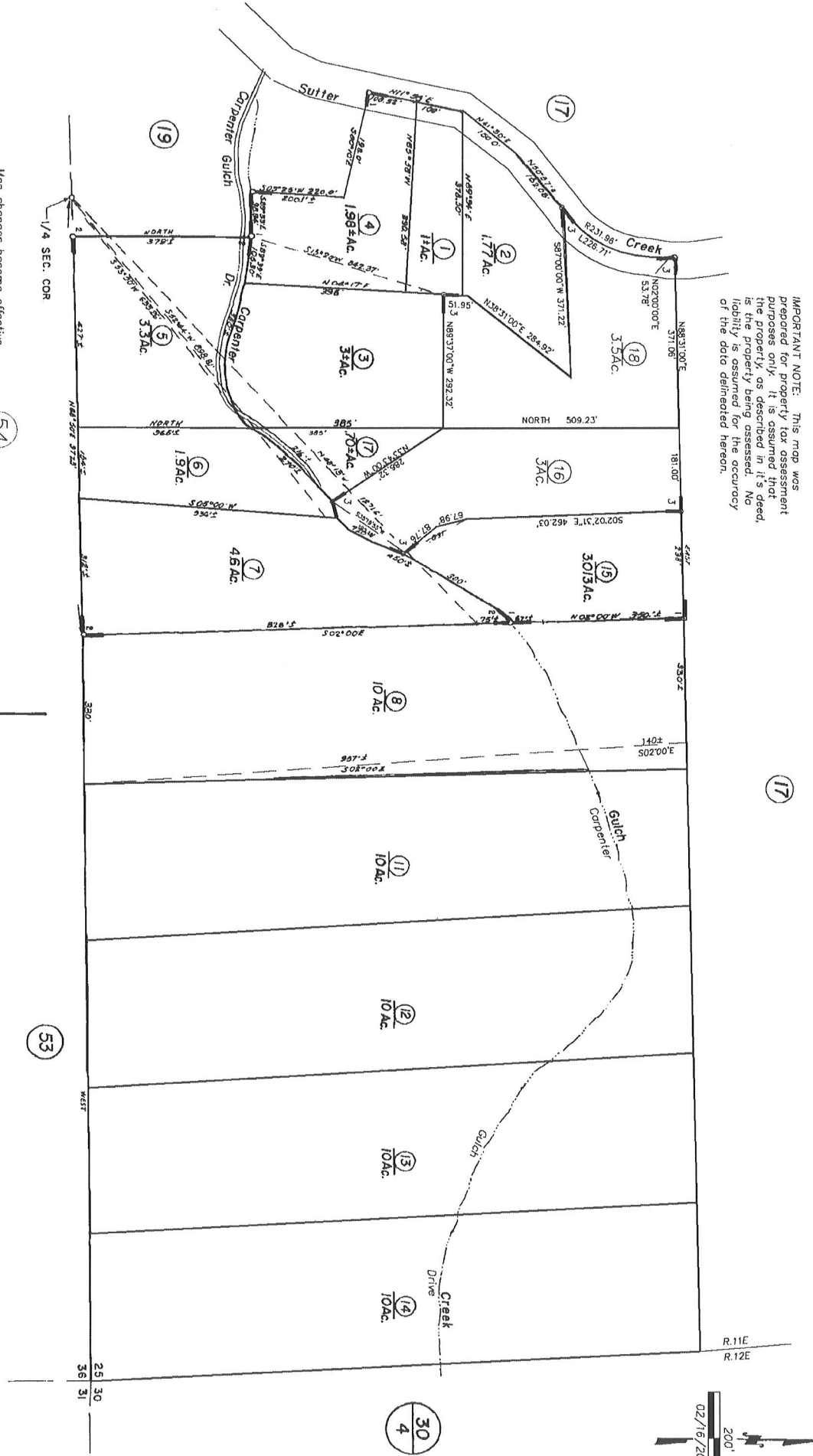
NOTE - Assessor's Block Numbers Shown in Ellipses.
Assessor's Parcel Numbers Shown in Circles.

Assessor's Map Bk.14, Pg.08
County of Amador, Calif.

POR. S1/2 S1/2 SEC. 25, T. 7 N., R. 11 E., M.D.B.A.M.

15-20

IMPORTANT NOTE: This map was prepared for property tax assessment purposes only. It is assumed that the property, as described in it's deed, is the property being assessed. No liability is assumed for the accuracy of the data delineated hereon.



Map changes become effective with the 2004-2005 roll year. Parcel numbers are subject to change prior to adoption of roll on each July 1.

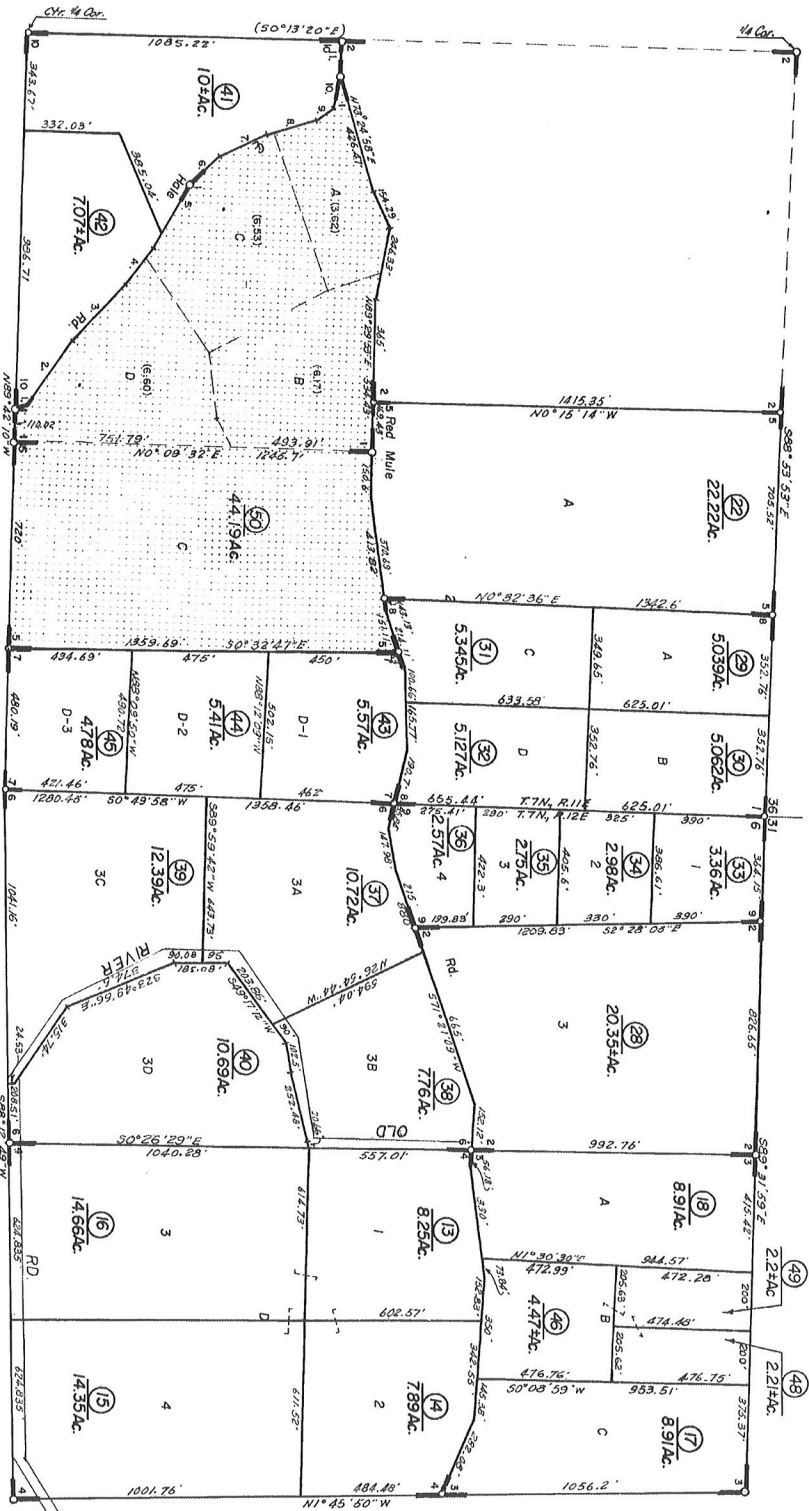
- 1-R.M. Bk. 6, Pg. 22
- 2-R.M. Bk. 6, Pg. 23
- 3-R.M. Bk. 46, Pg. 84 (9/2/92)

Assessor's Map Bk. 15, Pg. 20
County of Amador, Calif.

POR. SEC. 1, T. 7N, R. 11E, & POR. SEC. 6, T. 7N, R. 12E, M.D.B. 8M.

Tax Acre Code
52-000

15-27



- 1 - R.M. Bk. 13, Pg. 48
- 2 - R.M. Bk. 13, Pg. 93
- 3 - R.M. Bk. 16, Pg. 13
- 4 - R.M. Bk. 17, Pg. 16
- 5 - R.M. Bk. 19, Pg. 28
- 6 - R.M. Bk. 19, Pg. 39
- 7 - R.M. Bk. 21, Pg. 90
- 8 - R.M. Bk. 21, Pg. 97
- 9 - R.M. Bk. 22, Pg. 68
- 10 - R.M. Bk. 23, Pg. 63

- 1 - N62°56'56\"/>

NOTE—Assessor's Block Numbers Shown in Ellipses.
Assessor's Parcel Numbers Shown in Circles.

Assessor's Map Bk. 15, Pg. 27
County of Amador, Calif.

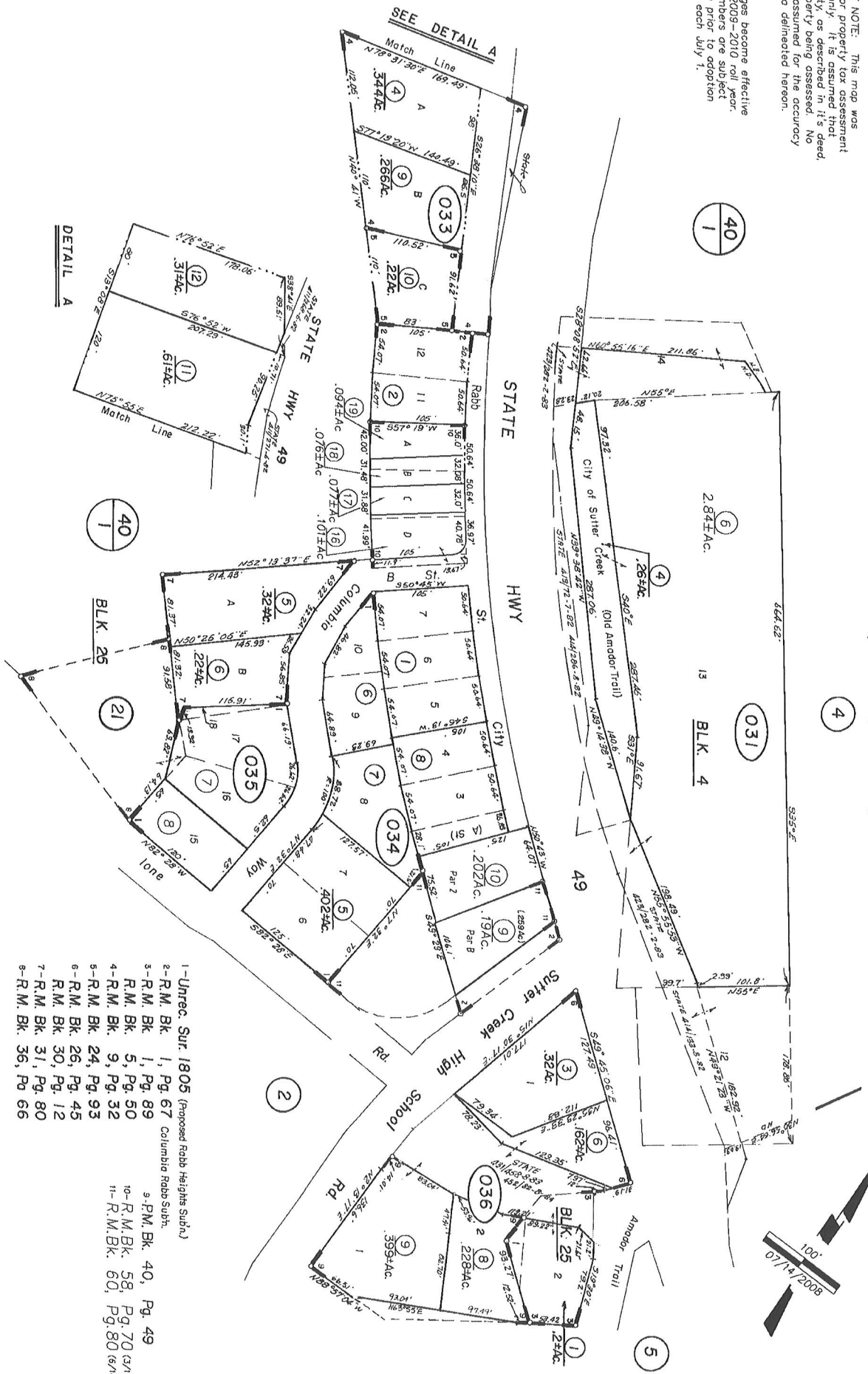
Roll 90-91

POR. S 1/2 SEC. 6, T. 6N., R. 11E., M.D.B. & M.

18-03

IMPORTANT NOTE: This map was prepared for property tax assessment purposes only. It is assumed that the property as described in its deed liability is assumed for the accuracy of the data delineated hereon.

Map changes become effective with the 2009-2010 roll year. Parcel numbers are subject to change prior to adoption of roll on each July 1.



- 1- Unrec. Sur. 1805 (Proposed Rabb Heights Subd.)
- 2- R.M. Bk. 1, Pg. 67 Columbia Rabb Subd.
- 3- R.M. Bk. 1, Pg. 89 R.M. Bk. 5, Pg. 50
- 4- R.M. Bk. 9, Pg. 32
- 5- R.M. Bk. 24, Pg. 93
- 6- R.M. Bk. 26, Pg. 45
- 7- R.M. Bk. 30, Pg. 12
- 8- R.M. Bk. 31, Pg. 80
- 9- R.M. Bk. 40, Pg. 49
- 10- R.M. Bk. 58, Pg. 70 (3/17/2005)
- 11- R.M. Bk. 60, Pg. 80 (6/10/2003)

Assessor's Map Bk. 18, Pg. 03
County of Amador, Calif.