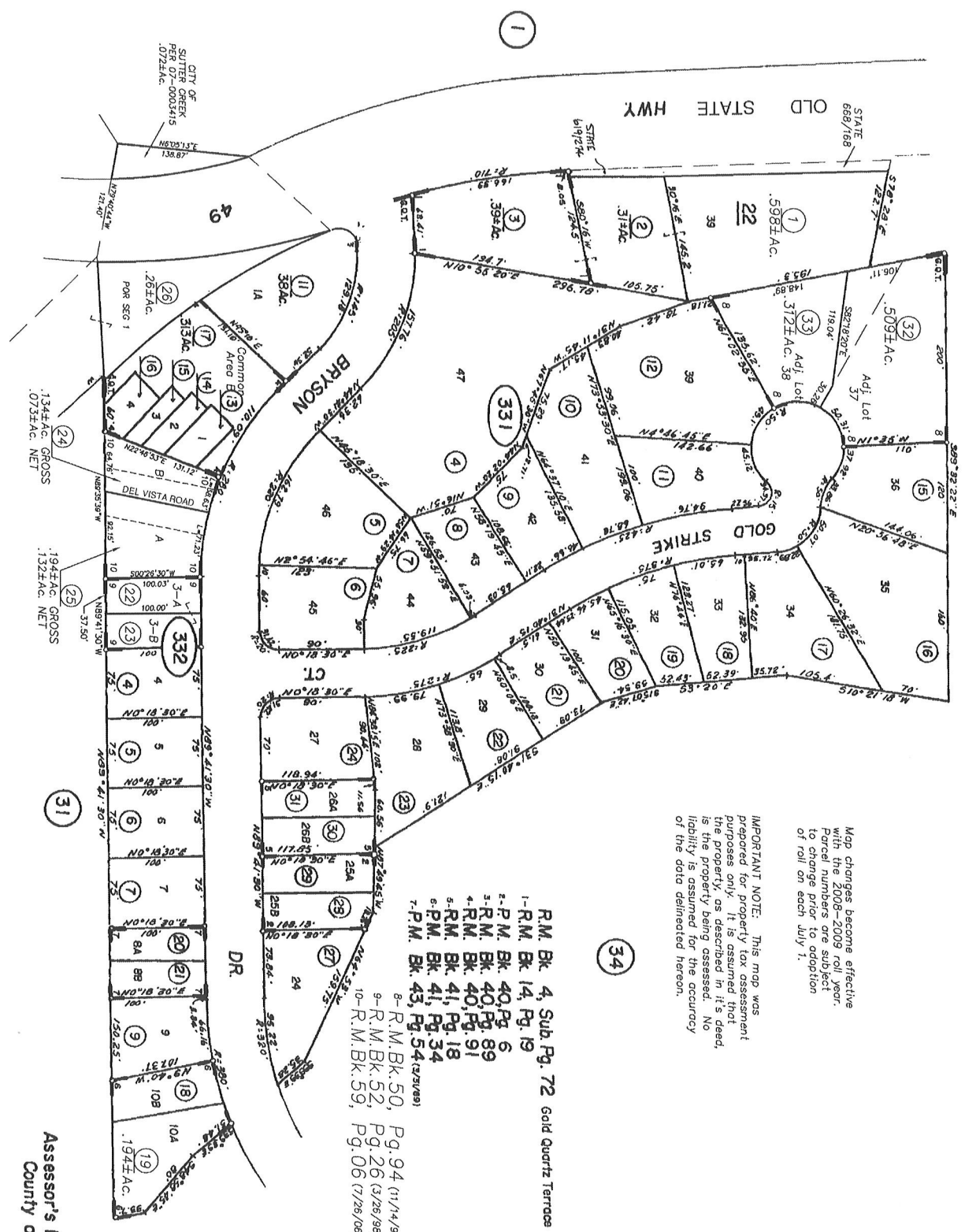


AMADOR COUNTY TAX COLLECTOR

**2017 TAX SALE PARCELS
(MARCH 15, 2017)**

ASSESSOR'S PARCEL MAPS

TSMAPS



IMPORTANT NOTE: This map was prepared for property tax assessment purposes only. It is assumed that the property as described in it's deed is the property being assessed. No liability is assumed for the accuracy of the data delineated hereon.

- 1- R.M. Bk. 4, Sub Pg. 72 Gold Quartz Terraces
- 2- P.M. Bk. 40, Pg. 6
- 3- R.M. Bk. 40, Pg. 89
- 4- R.M. Bk. 40, Pg. 91
- 5- R.M. Bk. 41, Pg. 18
- 6- P.M. Bk. 41, Pg. 34
- 7- P.M. Bk. 43, Pg. 54 (2/25/98)
- 8- R.M. Bk. 50, Pg. 94 (11/14/97)
- 9- R.M. Bk. 52, Pg. 26 (3/26/98)
- 10- R.M. Bk. 59, Pg. 06 (7/26/06)



Assessor's Map Bk. 18, Pg. 33
County of Amador, Calif.

CITY OF
SUTTER CREEK
PER. 07-0003415
07/25/AC.

POR E 1/2 SEC. 28, T6N, R11E, M D B & M.

IMPORTANT NOTE: This map was prepared for property tax assessment purposes only, as described in the deed. The property being assessed. No ability is assumed for the accuracy of the data delineated hereon.

Map changes become effective with the 2016-2017 roll year. Parcel numbers are subject to change prior to adoption of roll on each July 1.

- 1- R.M. Bk. 1, Pg. 59
- 2- R.M. Bk. 1, Pg. 82
- 3- R.M. Bk. 3, Pg. 67 Smalley Subd.
- 4- R.M. Bk. 4, Pg. 2
- 5- R.M. Bk. 7, Pg. 14
- 6- R.M. Bk. 7, Pg. 29

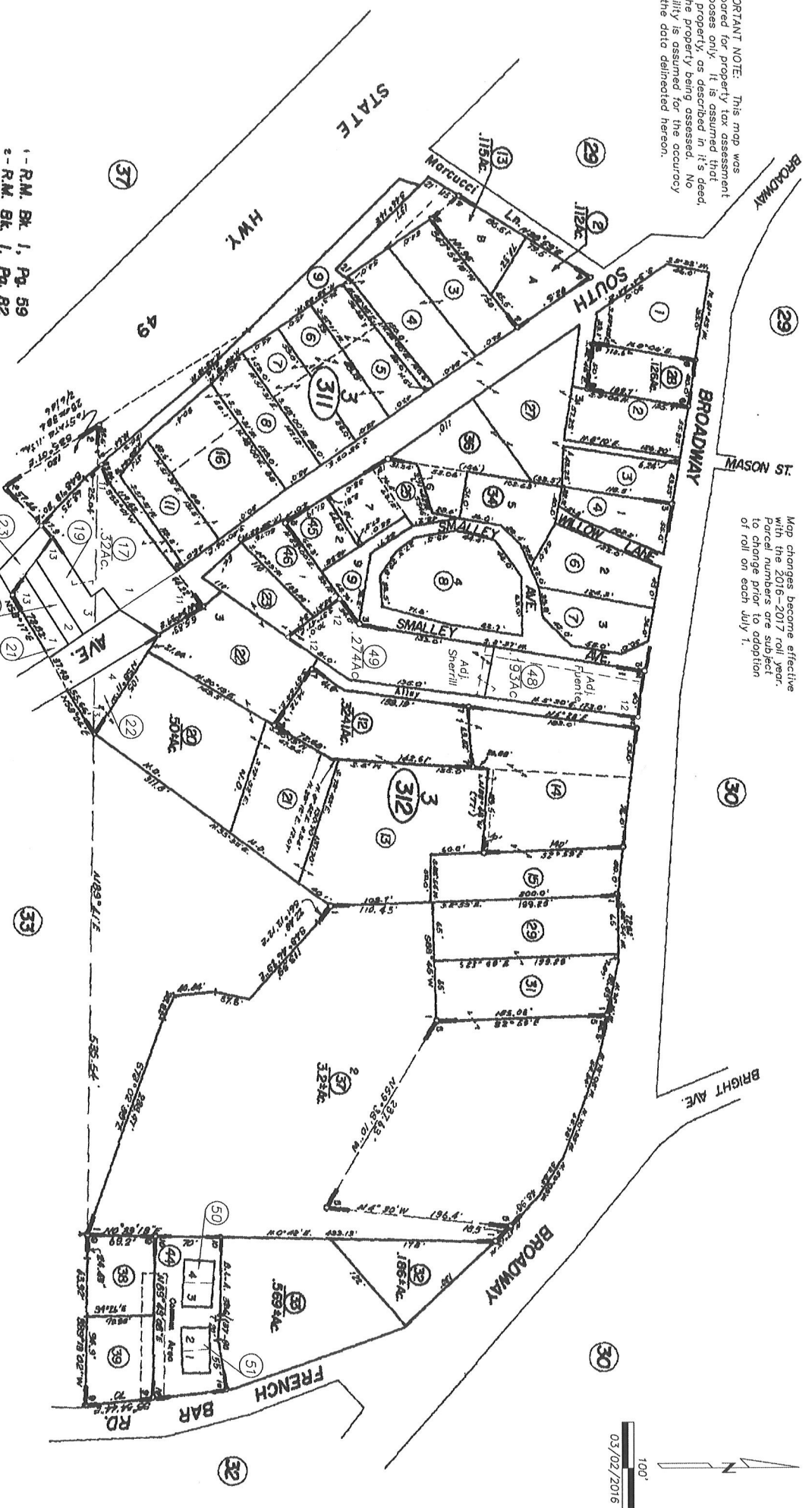
- 4- R.M. Bk. 8, Pg. 86
- 5- R.M. Bk. 10, Pg. 63
- 6- R.M. Bk. 12, Pg. 13
- 7- R.M. Bk. 13, Pg. 25
- 8- R.M. Bk. 10, Pg. 50

- 4- R.M. Bk. 32, Pg. 36
- 5- R.M. Bk. 36, Pg. 96
- 6- R.M. Bk. 39, Pg. 3
- 7- R.M. Bk. 40, Pg. 69

- 11- R.M. Bk. 52, Pg. 25 (3/17/99)
- 12- R.M. Bk. 52, Pg. 54 (6/4/1999)
- 13- R.M. Bk. 57, Pg. 12 (8/31/2004)

NOTE - Assessor's Block Numbers Shown in Ellipses.
Assessor's Parcel Numbers Shown in Circles.

Assessor's Map Bk. 20, Pg. 31
County of Amador, Calif.



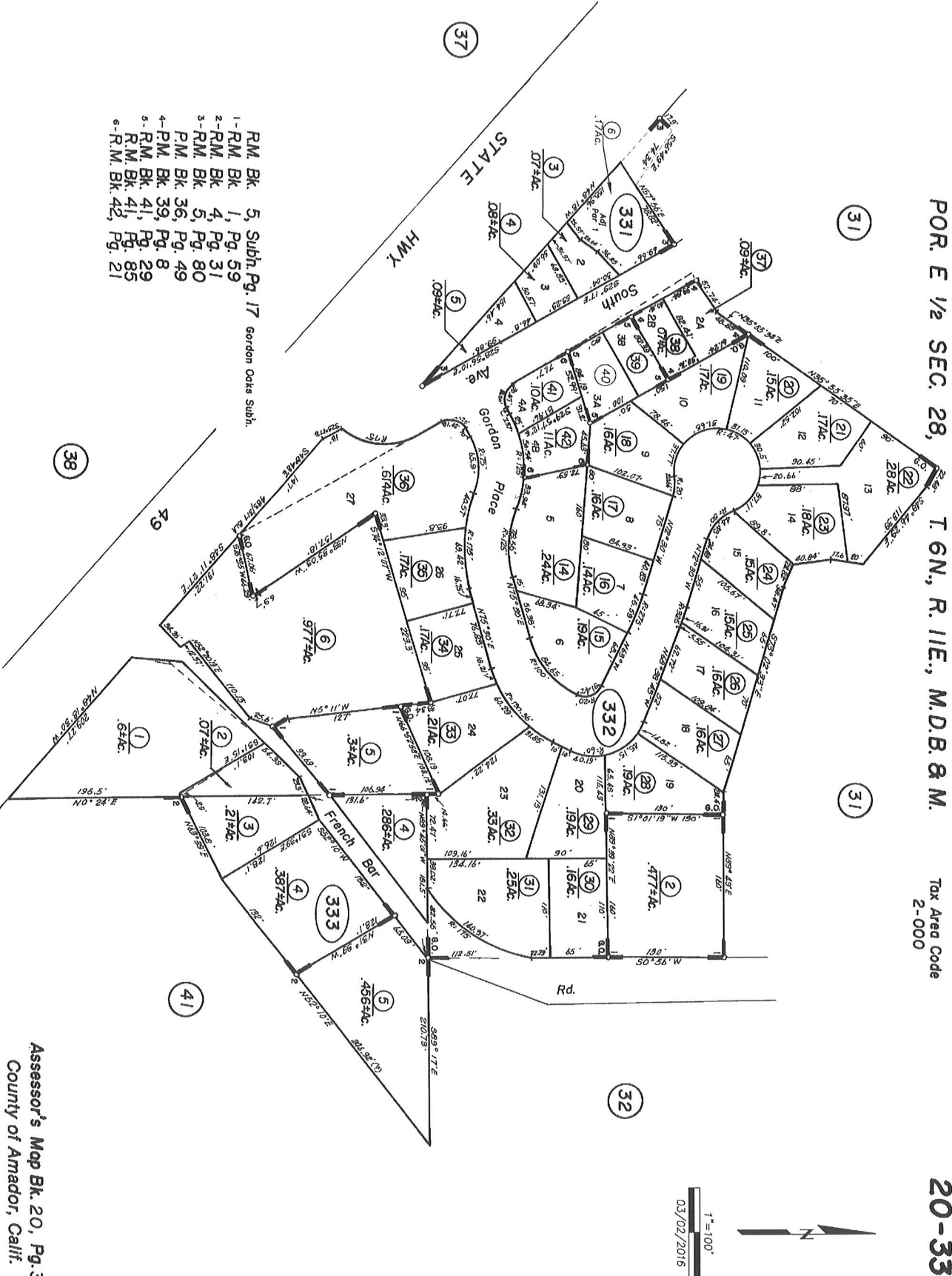
100'
03/02/2016

POR. E 1/2 SEC. 28,

T. 6N., R. 11E., M.D.B. & M.

Tax Area Code
2-000

20-33



- 1-RM. Bk. 5, Subn. Pg. 17 Gordon Oaks Subh.
- 2-RM. Bk. 4, Pg. 31
- 3-RM. Bk. 5, Pg. 80
- 4-RM. Bk. 39, Pg. 8
- 5-RM. Bk. 41, Pg. 85
- 6-RM. Bk. 42, Pg. 21

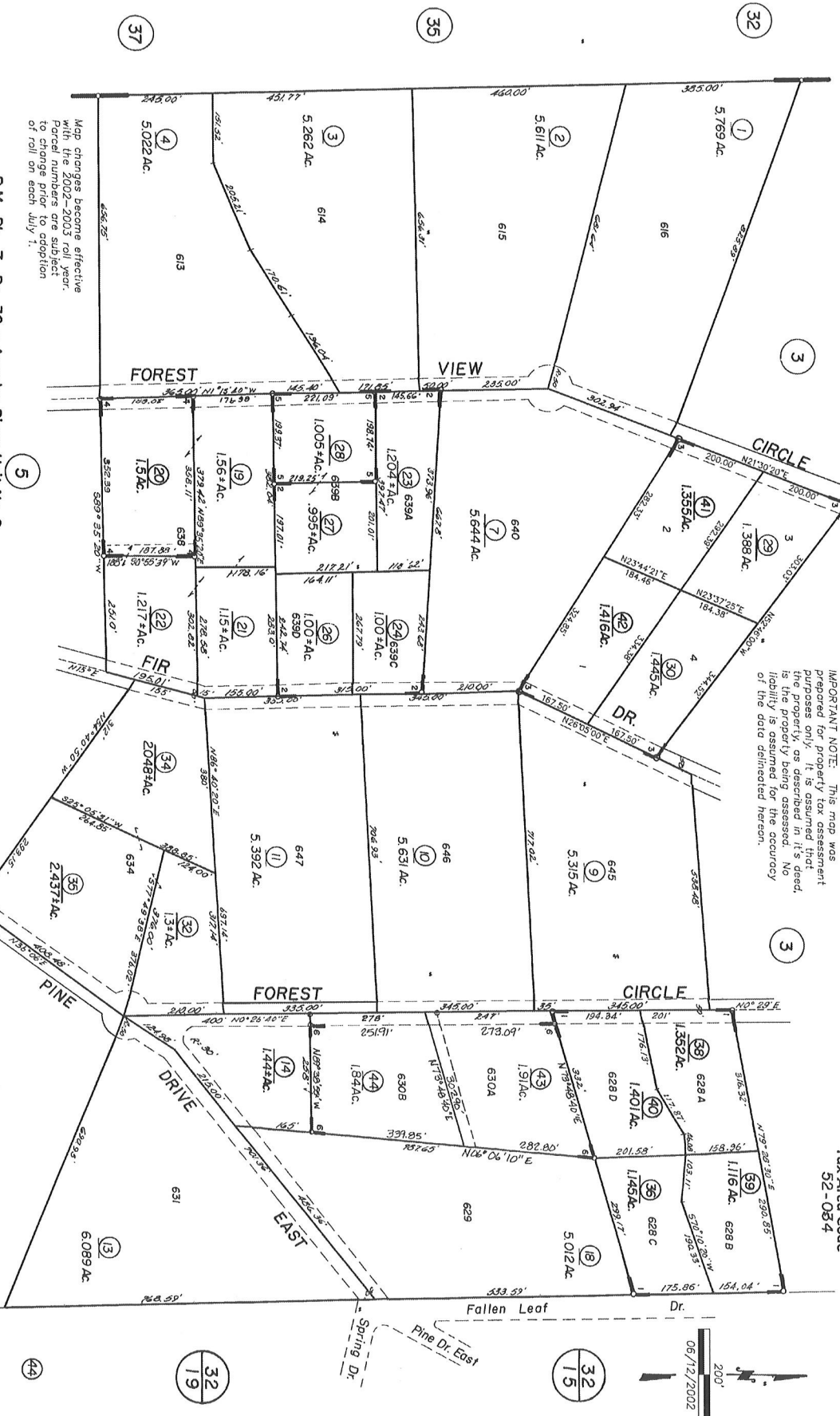
Assessor's Map Bk. 20, Pg. 33
County of Amador, Calif.

SUBDIVIDED LAND IN SECS. 3 & 4, T.7N., R.13E., M.D.B. & M.

Tax Area Code
52-054

23-04

IMPORTANT NOTE: This map was prepared for property tax assessment purposes only. It is assumed that the property, as described in it's deed, is the property being assessed. No liability is assumed for the accuracy of the data delineated hereon.



- 1 - R.M. Bk. 9, Pg. 36 - Amador Pines Unit No. 2
- 2 - R.M. Bk. 9, Pg. 51
- 3 - R.M. Bk. 11, Pg. 71
- 4 - R.M. Bk. 13, Pg. 71
- 5 - R.M. Bk. 26, Pg. 64
- 6 - R.M. Bk. 41, Pg. 57-B.L.A.I.
- 7 - R.M. Bk. 48, Pg. 80 (1/22/94)
- 8 - R.M. Bk. 49, Pg. 70 (1/26/96)

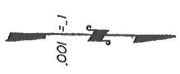
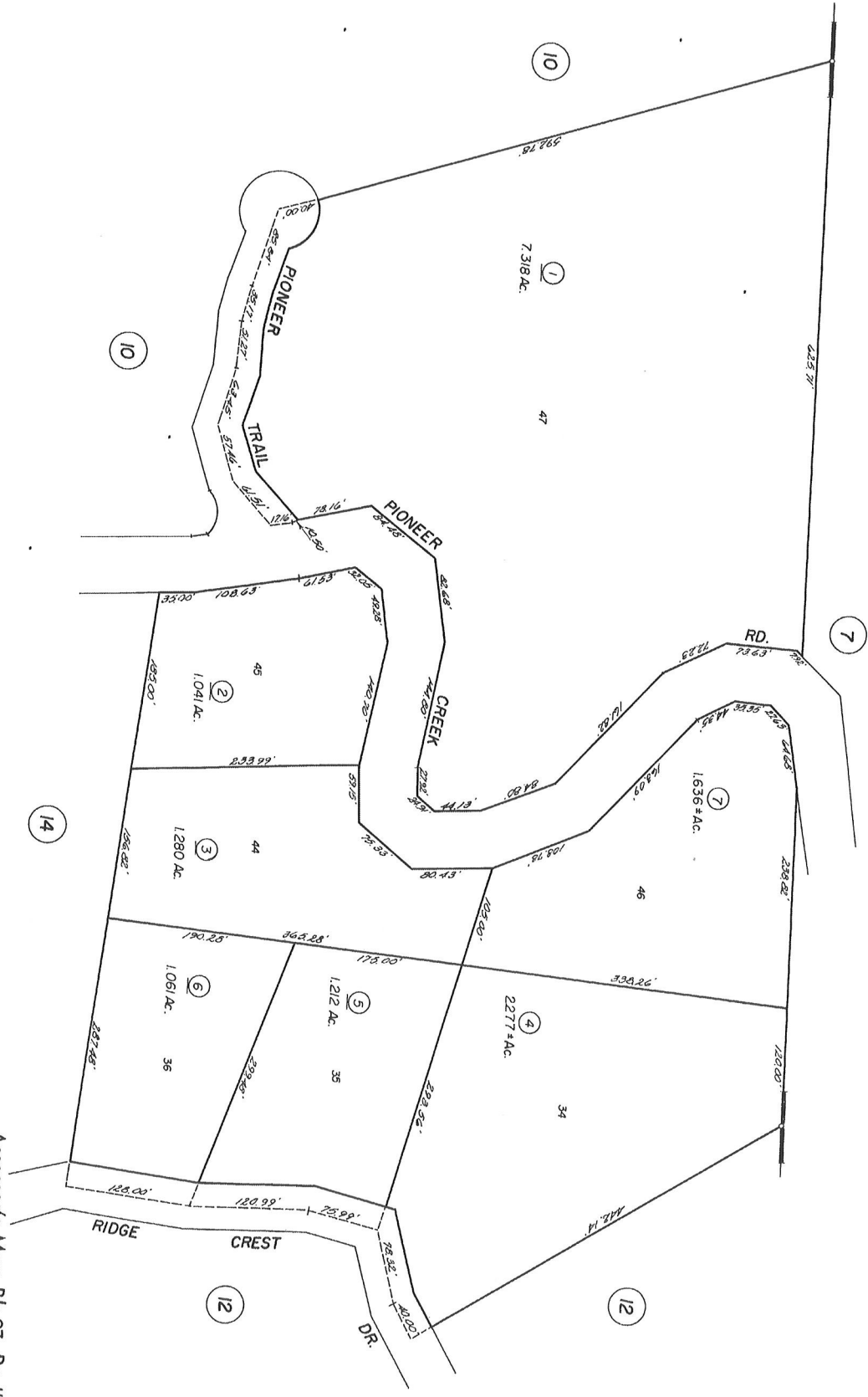
NOTE - Assessor's Block Numbers Shown in Ellipses.
Assessor's Parcel Numbers Shown in Circles.

Assessor's Map Bk. 23, Pg. 04
County of Amador, Calif.

SUBDIVIDED LAND IN S. 1/2 SEC. 20, T. 7N., R. 13E.

Tax Area Code

23-11

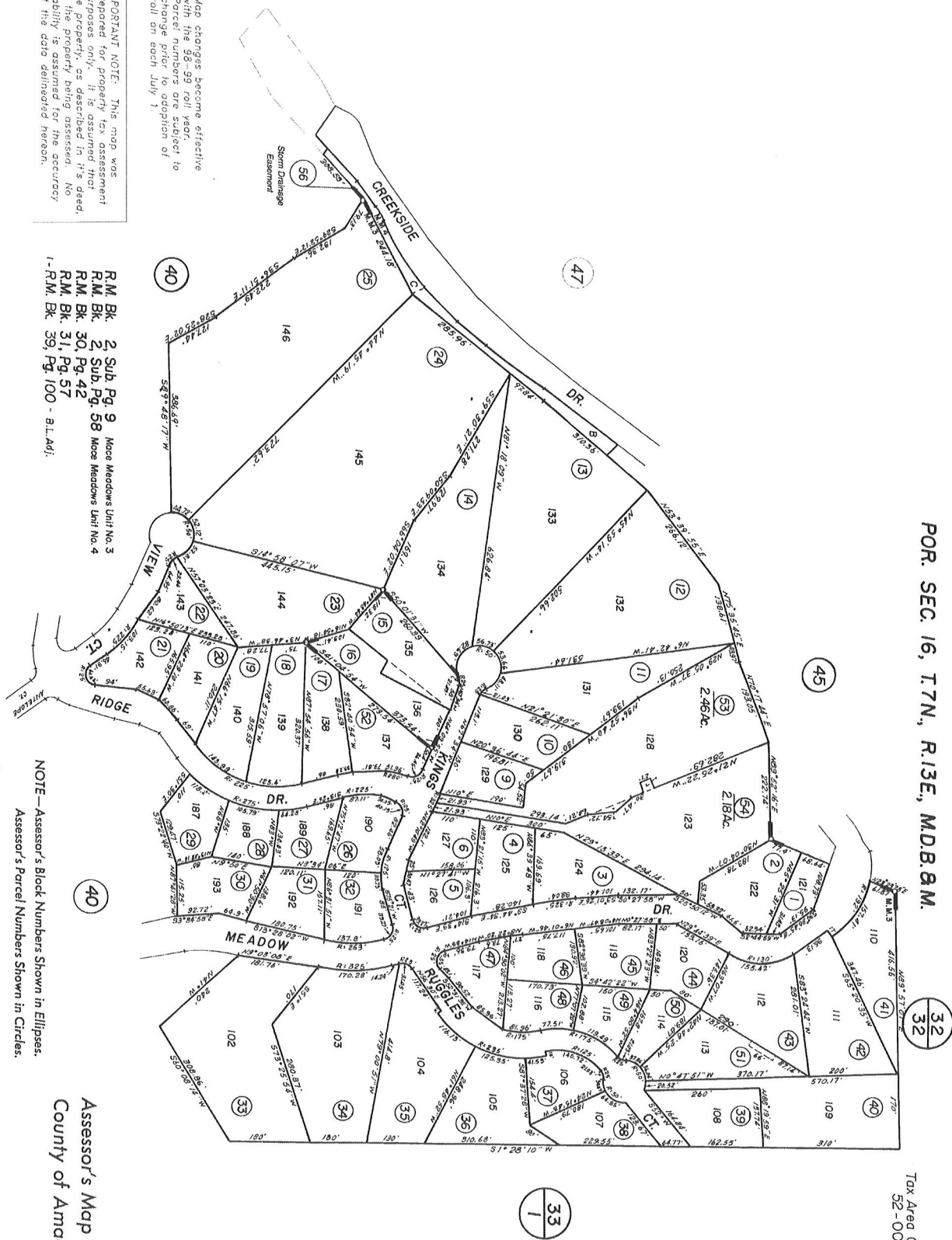


R.M. Bk. 7, Pg. 45 — Pioneer Glen Subdivision No. 1

NOTE—Assessor's Block Numbers Shown in Ellipses.
Assessor's Parcel Numbers Shown in Circles.

Assessor's Map Bk. 23, Pg. 11
County of Amador, Calif.

1"=200'



Map changes become effective with the 2009 roll year. Changes are subject to change prior to adoption of roll on each July 1.

IMPORTANT NOTE: This map was prepared for property tax assessment purposes only. It is assumed that the property as described in it's deed, is the property being assessed. No liability is assumed for the accuracy of the data delineated hereon.

R.M. Bk. 2 Sub. Pg. 9 Mace Meadows Unit No. 3
 R.M. Bk. 2 Sub. Pg. 58 Mace Meadows Unit No. 4
 R.M. Bk. 30, Pg. 42
 R.M. Bk. 31, Pg. 57
 1-R.M. Bk. 39, Pg. 100 - B.L.A.S.

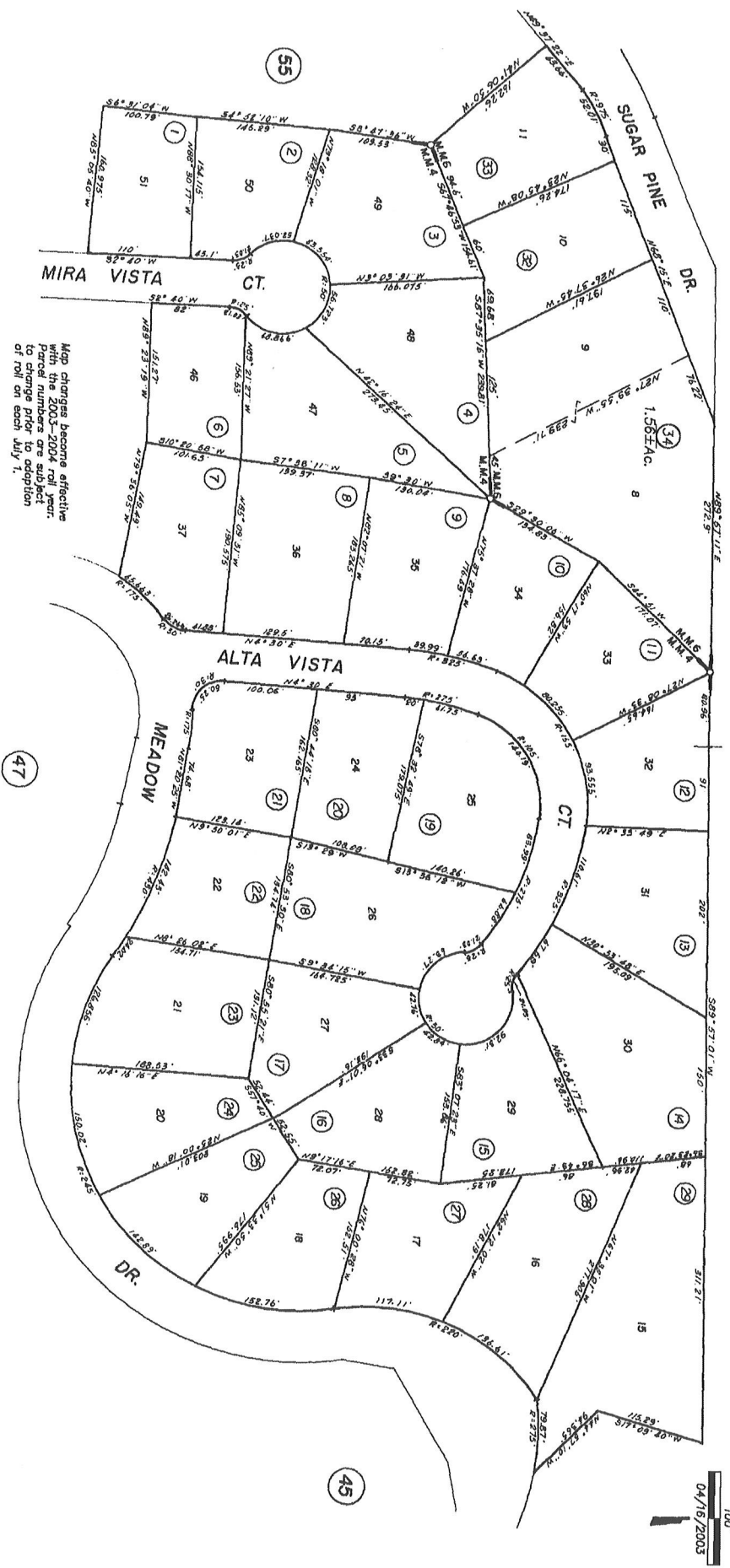
NOTE—Assessor's Block Numbers Shown in Ellipses.
 Assessor's Parcel Numbers Shown in Circles.

Assessor's Map Bk.23, Pg. 41
 County of Amador, Calif.

IMPORTANT NOTE: This map was prepared for property tax assessment purposes only. It is assumed that the property as described in it's deed is the property being assessed. No liability is assumed for the accuracy of the data indicated hereon.

POR. SEC. 16, T.7N., R.13E., M.D.B. 8 M.

23-46



Map changes become effective with the 2003-2004 roll year. Parcel numbers are subject to change upon adoption of roll on each July 1.

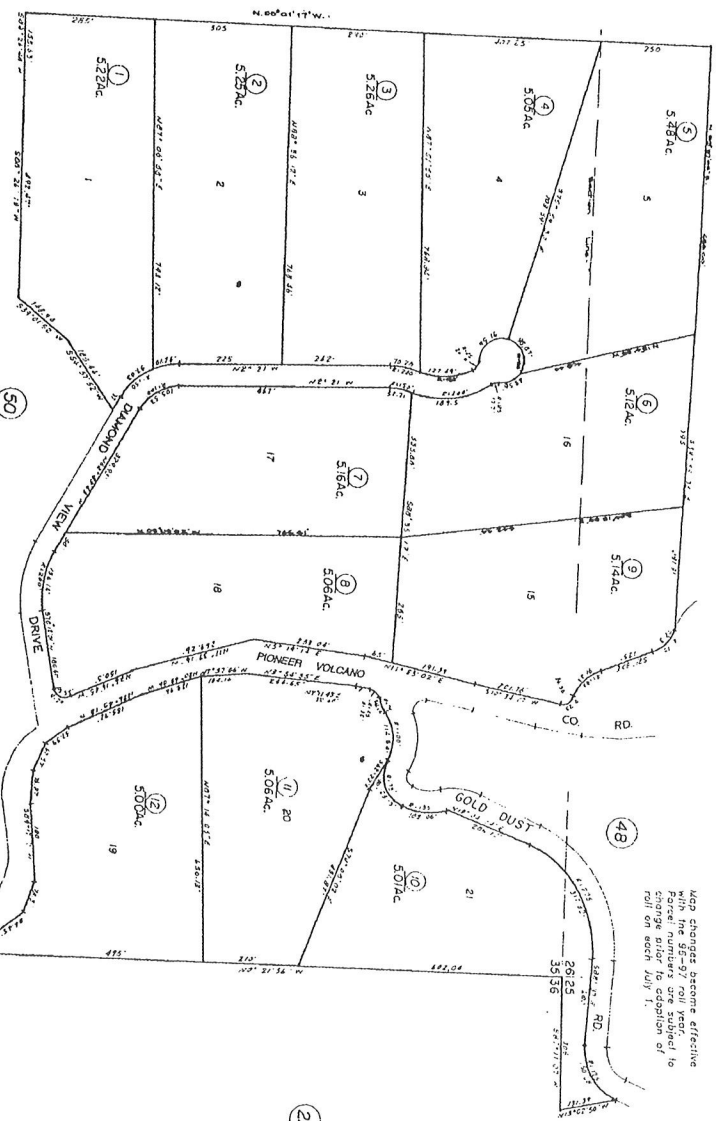
RM. Bk. 2, Sub. - Pg. 58 - Mace Meadows Unit No. 4
 RM. Bk. 2, Sub. - Pg. 97 - Mace Meadows Unit No. 6

NOTE—Assessor's Block Numbers Shown in Ellipses.
 Assessor's Parcel Numbers Shown in Circles.

Assessor's Map Bk. 23, Pg. 46
 County of Amador, Calif.

04/16/2003

MAP CHANGES BECOME EFFECTIVE
Parcel numbers are subject to
change prior to adoption of
roll on each July 1.



R.M. Bk. 5, Pg. 27
R.M. Bk. 2-S, Pg. 41 — Pine Acres Ranchettes

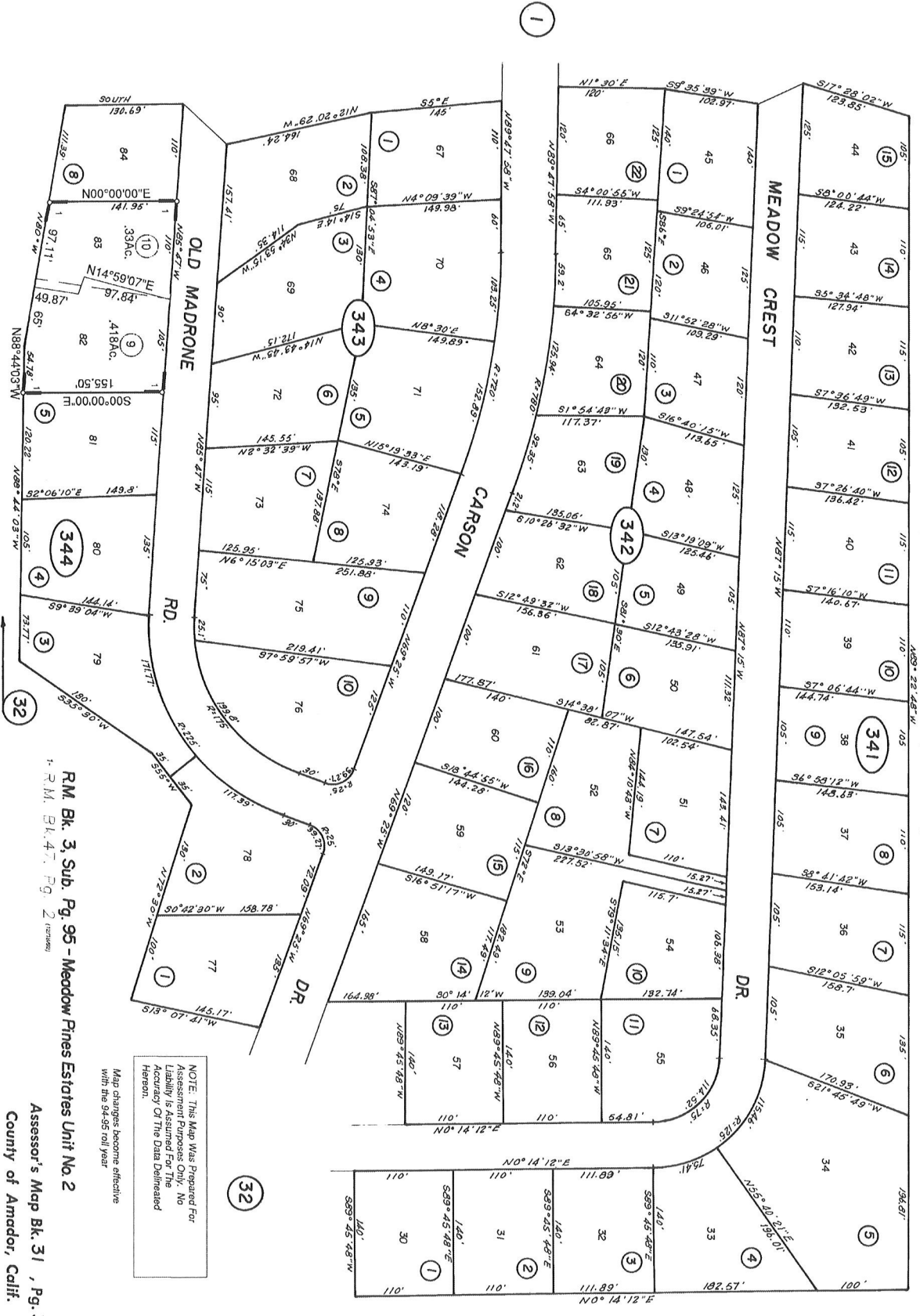
IMPORTANT NOTE: This map was prepared for property tax assessment purposes only. It is assumed that the property, as depicted, is the property, as described in the deed. No warranty is made as to the accuracy of the acreage delineated herein.

Assessor's Map Bk. 30, Pg. 45
County of Amador, Calif.

POR. N. 1/2, SEC. 30, T. 7N., R. 13E., M.D.B. 8 M.

36

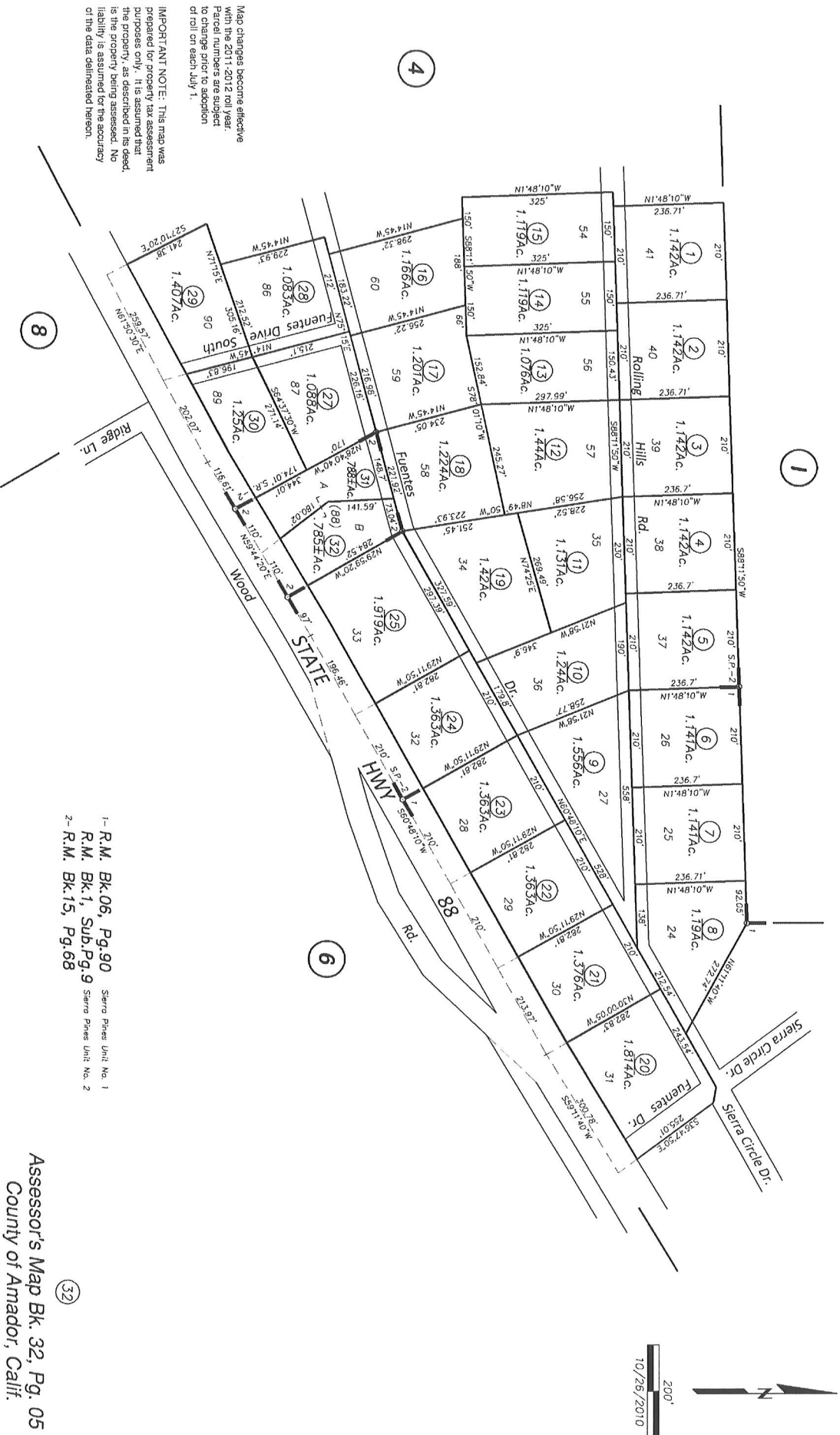
31-34



R.M. Bk. 3, Sub. Pg. 95 - Meadow Pines Estates Unit No. 2
 R.M. Bk. 4, Pg. 2 (continued)
 Assessor's Map Bk. 31, Pg. 34
 County of Amador, Calif.

NOTE: This Map Was Prepared For Assessment Purposes Only. No Liability Is Assumed For The Accuracy Of The Data Delected Hereon.
 Map changes become effective with the 94-95 roll year





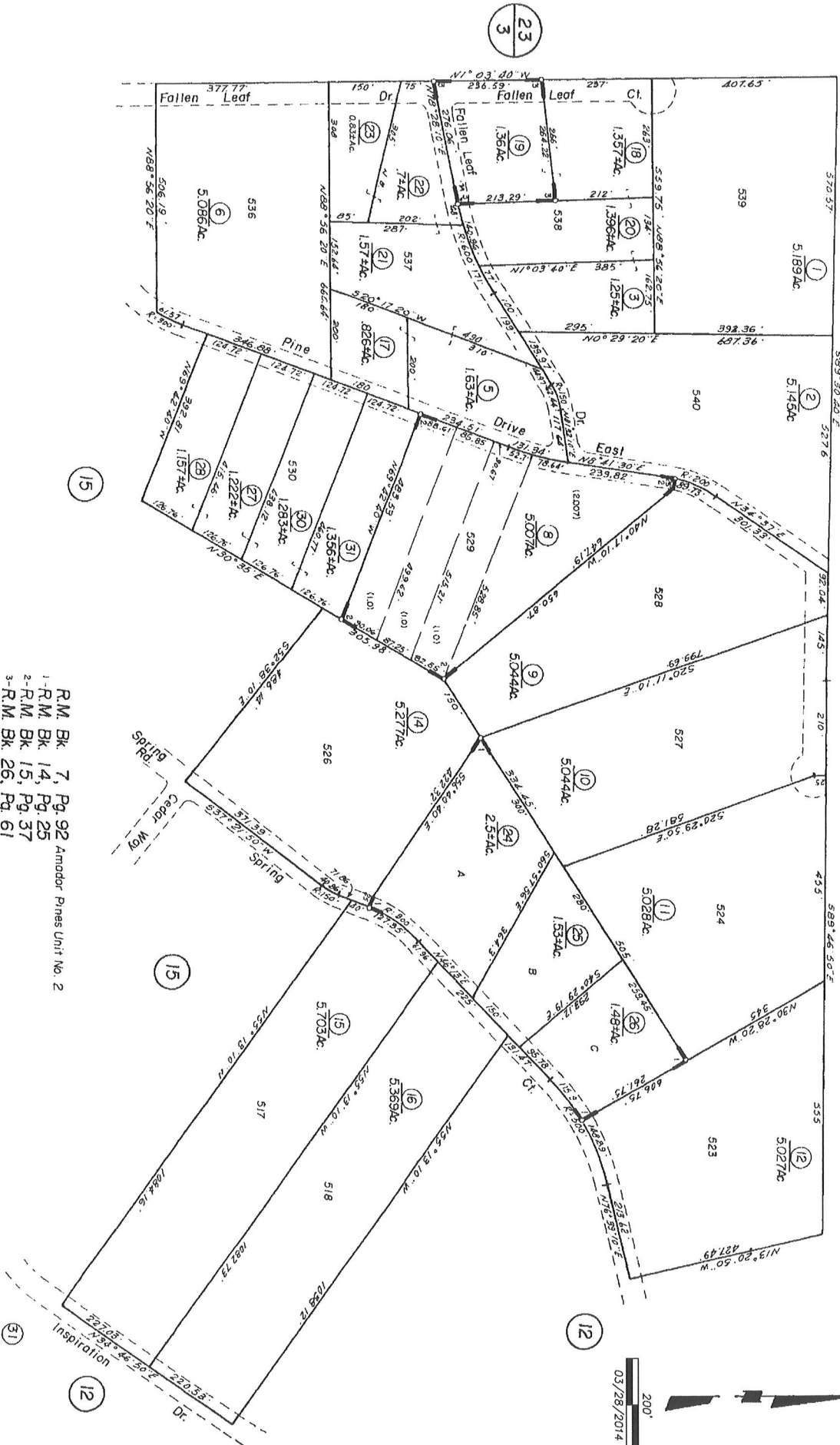
Map changes become effective with the 2011-2012 roll year. Parcel numbers are subject to change prior to adoption of roll on each July 1.

IMPORTANT NOTE: This map was prepared for property tax assessment purposes only. It is assumed that the property, as described in this deed, is the property being assessed. No liability is assumed for the accuracy of the data delineated hereon.

- 1- R.M. Bk.06, Pg.90 Sierra Press Unit: No. 1
- R.M. Bk.1, Sub.Pg.9 Sierra Press Unit: No. 2
- 2- R.M. Bk.15, Pg.68

42 POR. N 1/2 SEC. 3, T. 7N., R. 13E., M.D.B. & M.

32-11



- R.M. Bk 7, Pg. 92 Amador Pines Unit No. 2
- 1- R.M. Bk 14, Pg. 25
- 2- R.M. Bk 15, Pg. 37
- 3- R.M. Bk 26, Pg. 61

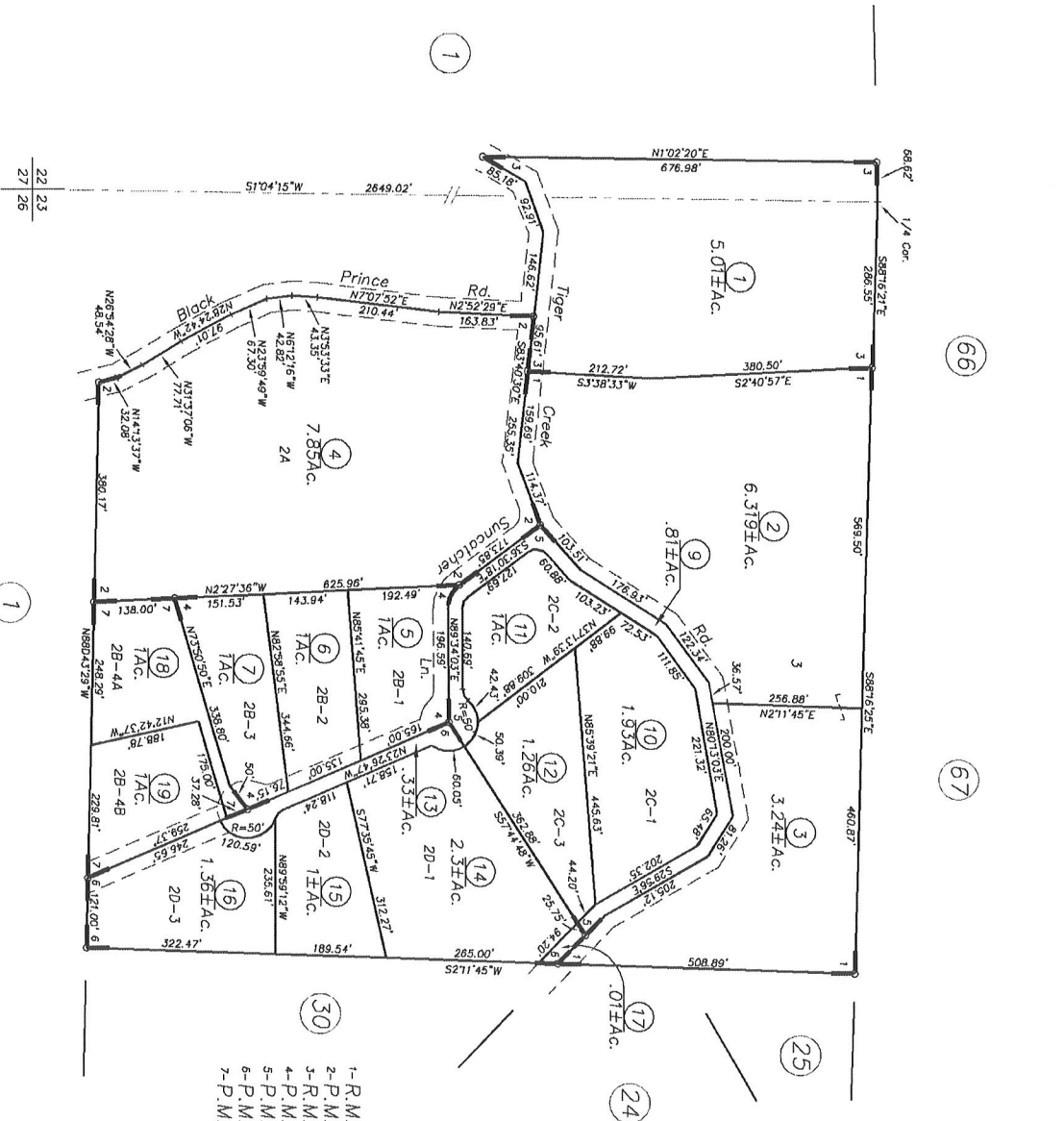
Assessor's Map Bk. 32, Pg. 11
 County of Amador, Calif.

POR. SW 1/4, SEC. 23, T. 7N, R. 13E, M.D.B.&M.

33-74

IMPORTANT NOTE: This map was prepared for property tax assessment purposes only. It is assumed that the property, as described in its deed, is the property being assessed. No liability is assumed for the accuracy of the data delineated hereon.

Map changes become effective with the 2004-2005 roll year. Parcel numbers are subject to change prior to adoption of roll on each July 1.



- 1-R.M. Bk. 12, Pg. 61
- 2-P.M. Bk. 28, Pg. 85
- 3-R.M. Bk. 36, Pg. 56
- 4-P.M. Bk. 36, Pg. 92
- 5-P.M. Bk. 36, Pg. 94
- 6-P.M. Bk. 36, Pg. 98
- 7-P.M. Bk. 38, Pg. 14

Assessor's Map Bk. 33, Pg. 74
County of Amador, Calif.

32
41

POR. SEC. 15, T. 7N., R. 13E., M.D.B. & M.

32
48

33-80

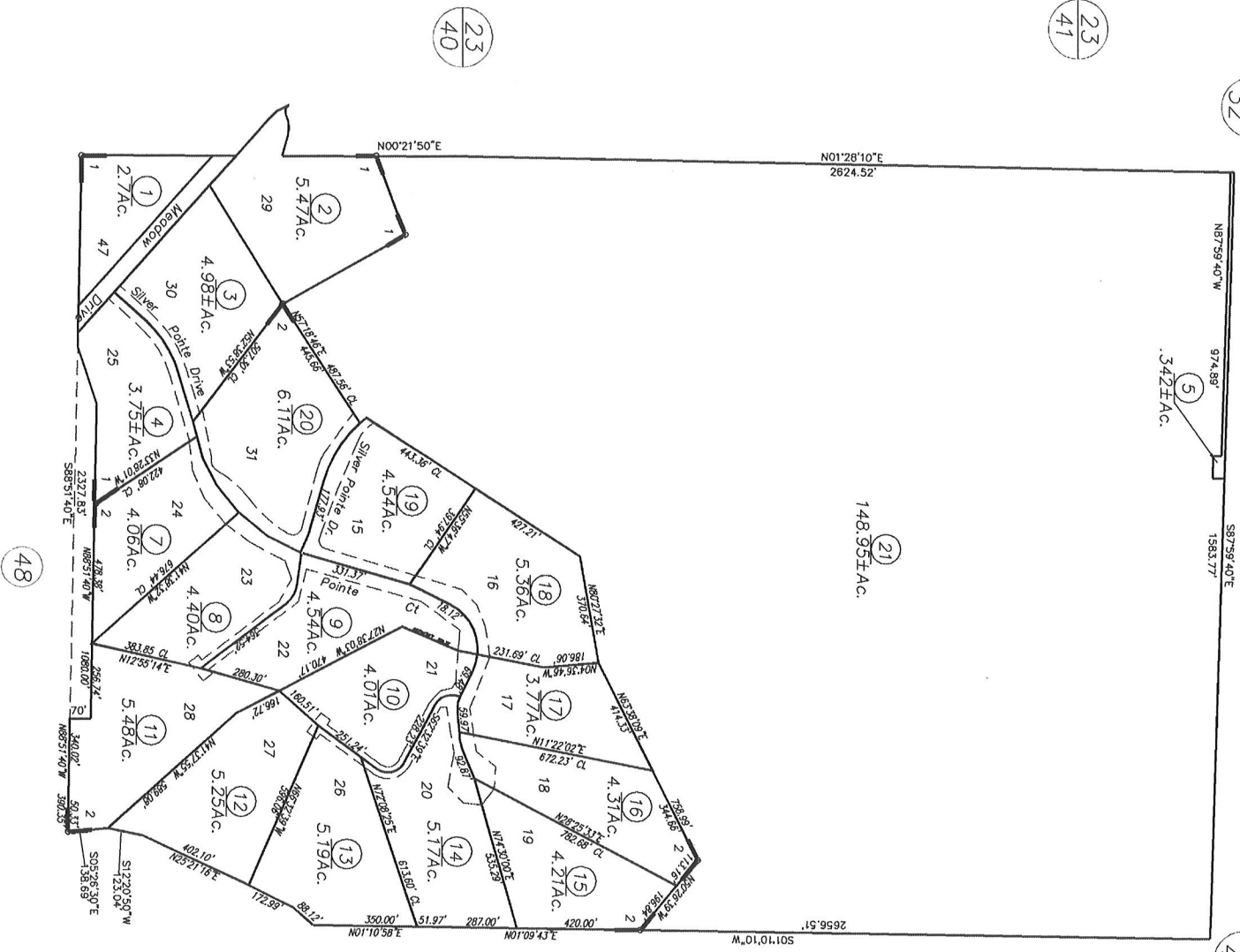
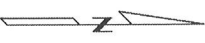
5
.342±Ac.

N87°59'40"W 974.89'
S87°59'40"E 1583.77'

21
148.95±Ac.

21

400'
12/23/2004



Map changes become effective with the 2005-2006 roll year. Parcel numbers are subject to change prior to adoption of roll on each July 1.

IMPORTANT NOTE: This map was prepared for property tax assessment purposes only. It is assumed that the property, as described in it's deed, is the property being assessed. No liability is assumed for the accuracy of the data delineated hereon.

- R.M.Bk. 1, Pg. 2
- R.M.Bk. 41, Pg. 25
- 1-R.M.Bk. 7, Sub.Pg. 41 Silver Pointe Subn Unit #1 (11/18/1998)
- 2-R.M.Bk. 8, Sub.Pg. 21 Silver Pointe Subn Unit #2 (11/17/2004)

Assessor's Map Bk 33, Pg. 80
County of Amador, Calif.

23
41

23
40

48

02

23

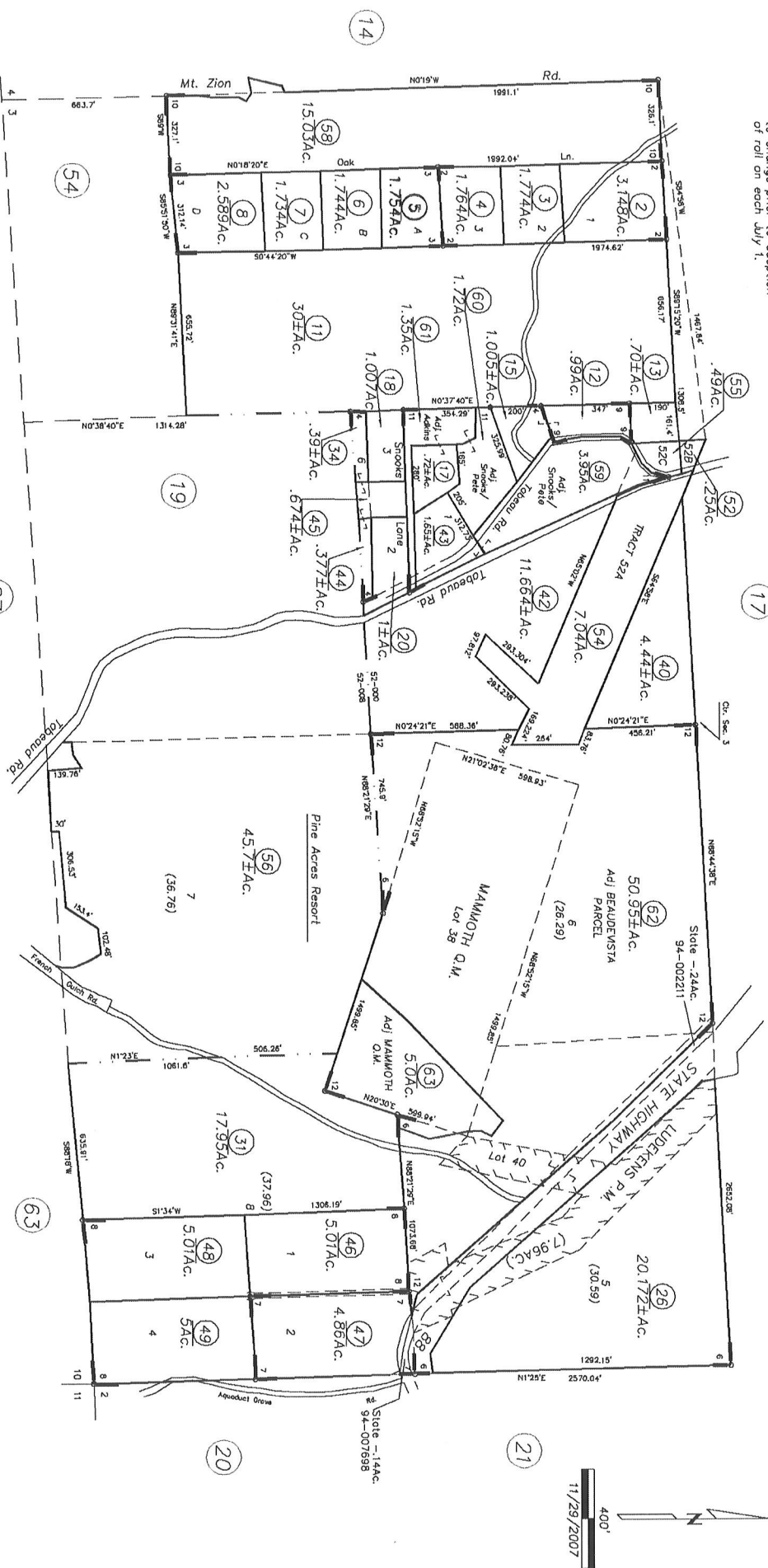
21

Map changes become effective with the 2008-2009 roll year. Parcel numbers are subject to change prior to adoption of roll on each July 1.

POR. S 1/2 SEC. 3, T.6N., R.12E., M.D.B. & M.

Tax Area Code
52-000
52-008

38-18



IMPORTANT NOTE: This map was prepared for property tax assessment purposes only. It is assumed that the property, as described in it's deed is the property being assessed. No liability is assumed for the accuracy of the data delineated hereon.

- 1- Unrec. Sur. 2343
- 2- R.M.Bk. 4, Pg.83 (5/8/51)
- 3- R.M.Bk. 8, Pg.64 (6/28/62)
- 4- R.M.Bk. 8, Pg.85 (9/28/62)
- 5- R.M.Bk. 10, Pg.44 (11/22/63)

- 6- R.M.Bk. 23, Pg.46 (9/20/73)
- 7- R.M.Bk. 36, Pg.54 (3/3/83)
- 8- R.M.Bk. 42, Pg.29 (12/23/87)
- 9- R.M.Bk. 42, Pg.59 (3/15/88)

- 10- R.M.Bk. 44, Pg.40 (3/28/90)
- 11- R.M.Bk. 45, Pg.22 (12/19/90)
- 12- R.M.Bk. 48, Pg.43 (6/6/94)
- 13- R.M.Bk. 48, Pg.100 (4/14/95)
- 14- R.M.Bk. 58, Pg.77 (4/13/2006)

Assessor's Map Bk.38, Pg.18
County of Amador, Calif.