

*Bob Plaister
7A Crop Reports file*

1959
AMADOR COUNTY

**ANNUAL CROP
AND
LIVESTOCK REPORT**

Agricultural Commissioner

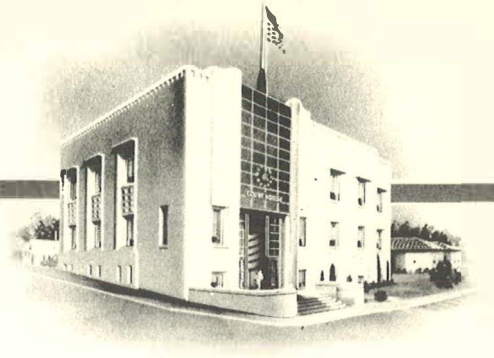
P. O. Box 74

Jackson, California

AMADOR COUNTY

LELAND BROWN
Agricultural Commissioner
County Sealer Weights and Measures
Phone Jackson 787
P. O. Box 74

JACKSON, CALIFORNIA



April 20, 1960

The Honorable William E. Warne, Director
State Department of Agriculture
and
The Honorable Board of Supervisors of
Amador County

Gentlemen:

The enclosed report is a compilation of the estimated acreage, production and value of agricultural products in Amador County for 1959 as required by Section 65.5 of the Agricultural Code.

These values represent the gross F.O.B. price which includes all costs of production and is not intended to show the net profit to the farmers.

This year at the request of the State Department of Agriculture, two major changes were made in the items included. This was done in order to be more uniform with other crop reporting agencies. A value was placed on dryland range and pasture which added \$312,510 to the value of field crops, and no value was given to transit cattle which reduced by \$165,000 the value attributed to livestock production.

I wish to thank the many individuals who cooperated in making this report possible.

Respectfully submitted,


Leland Brown
Agricultural Commissioner

LB:dt

AMADOR COUNTY
MISCELLANEOUS PRODUCTION AND VALUE
1958-1959

Item	Production	Unit	Value	
			Per Unit	Total
Honey	16,000	lbs.	.10	\$ 1,600.
Vegetables (All)	140.5	Ton	87.36	12,331.
Berries	1.8	Ton	650.	1,170.
Melons	21.6	Ton	70.	1,512.
Onions (Dry)	6.11	Ton	24.	147.
Tomatoes	14.03	Ton	55.	772.
Other	97.	Ton	90.	8,730.
TOTAL				\$ 13,931.

RECAPITULATION

Field Crops	168,114 acres		\$. 520,919
Fruit & Nut Crops	1,051 acres		160,719
Livestock & Poultry	76,439 cwt.		1,656,841
Livestock & Poultry Products			322,715
Miscellaneous			<u>13,931</u>
GRAND TOTAL			\$2,675,125
1948			\$2,274,698
1949			2,358,153
1950			2,713,765
1951			3,960,864
1952			2,948,328
1953			1,987,049
1954			2,355,499
1955			2,342,185
1956			2,077,141
1957			2,119,784
1958			2,548,917
1959			2,675,125

AMADOR COUNTY
LIVESTOCK AND POULTRY PRODUCTION AND VALUE
1958- 1959

Item	Year	Production		Unit	Value	
		No. of Head	Total Liveweight (Cwt.)		Per Unit	Total
Cattle & Calves (All)	1959	11,045	62,305	Cwt.	\$22.85	\$1,424,052
	1958	14,005	69,761	Cwt.	23.92	1,668,086
Breeding Stock	1959	535	525	Head	370.00	12,950
	1958	40	700	Head	350.00	14,000
Bulls (Cull)	1959	155	2,325	Cwt.	19.00	44,175
	1958	150	2,250	Cwt.	20.00	45,000
Calves (Beef and Dairy)	1959	8,225	34,115	Cwt.	27.30	931,339
	1958	8,315	34,461	Cwt.	27.97	963,936
Cows (Beef and Dairy)	1959	1,990	19,900	Cwt.	15.00	298,500
	1958	1,890	18,900	Cwt.	16.00	302,400
Steers	1959	640	5,440	Cwt.	25.20	137,088
	1958	650	7,150	Cwt.	25.00	178,750
Chickens (All)	1959	228,467	7,848	Cwt.	15.80	124,017
	1958	223,050	7,496	Cwt.	17.15	128,545
Broilers & Fryers	1959	221,150	7,519	Cwt.	16.10	121,056
	1958	217,175	7,232	Cwt.	17.30	125,113
Hens and Roosters	1959	7,317	329	Cwt.	9.00	2,961
	1958	5,875	264	Cwt.	13.00	3,432
Hogs & Feeders	1959	1,247	1,372	Cwt.	15.30	20,992
	1958	1,348	1,483	Cwt.	22.43	33,264
Sheep & Lambs (All)	1959	5,591	4,914	Cwt.	17.46	85,776
	1958	6,508	5,773	Cwt.	17.81	102,800
Ewes	1959	510	816	Cwt.	3.12	2,546
	1958	603	965	Cwt.	4.00	3,860
Goats (Kid)	1959	490	196	Cwt.	21.50	4,214
	1958	470	188	Cwt.	22.50	4,230
Lambs	1959	4,591	3,902	Cwt.	20.25	79,016
	1958	5,435	4,620	Cwt.	20.50	94,710
Miscellaneous (Rabbits, etc.)	1959					2,000
	1958					2,000
TOTALS	1959					\$1,656,841
	1958					1,934,695

AMADOR COUNTY
FIELD CROPS; ACREAGE, PRODUCTION AND VALUE
1958-1959

Crop	Year	Harvested Acreage	Production		Unit	Value	
			Per Acre	Total		Per Unit	Total
Barley	1959	320	.92	294.4	Ton	\$ 42.	\$ 12,365
	1958	109	.83	90.8	Ton	45.	4,086
Beans and Tomatoes	1959	323					55,630
	1958	None					
Corn, Silage	1959	98	7.9	774	Ton	7.50	5,805
	1958	155	9.6	1488	Ton	8.00	11,904
Hay, Alfalfa	1959	410	3.1	1271	Ton	24.75	31,457
	1958	238	2.3	547	Ton	24.00	13,128
Hay, Grain	1959	1,311	1.6	2098	Ton	21.75	45,632
	1958	960	1.6	1536	Ton	21.50	33,024
Hay, Other	1959	380	1.2	456	Ton	20.00	9,120
	1958	400	1.5	600	Ton	20.00	12,000
Oats	1959	50	.76	38	Ton	46.00	1,748
	1958	135	.8	108	Ton	45.00	4,860
Pasture, Irrigated	1959	421			Acre	53.00	22,313
	1958	Not listed					
Pasture (Dry) & Range	1959	164,479			Acre	1.90	312,510
	1958	Not listed					
Sorghum, Grain	1959	235	1.9	446.5	Ton	41.00	18,307
	1958	126	1.5	189	Ton	47.00	8,883
Wheat	1959	87	1.2	104	Ton	58.00	6,032
	1958	190	.73	139	Ton	64.00	8,896
TOTALS	1959						\$520,919
	1958						111,719

AMADOR COUNTY
LIVESTOCK AND POULTRY PRODUCTS; PRODUCTION AND VALUE
1958-1959

Item	Year	Production	Unit	Value	
				Per Unit	Total
Milk, Cow All	1959	34,020	Cwt.	4.34	\$ 147,786
	1958	32,830	Cwt.	4.38	
Market	1959	24,660	Cwt.	4.71	116,149
	1958	24,180	Cwt.	4.71	113,888
Manufacturing	1959	9,360	Cwt.	3.38	31,637
	1958	8,650	Cwt.	3.47	30,016
Eggs-Chicken	1959	437,238	Doz.	.337	147,349
	1958	352,530	Doz.	.40	141,012
Wool and Mohair	1959	50,678	Lbs.	.54	27,366
	1958	61,370	Lbs.	.463	28,414
TOTALS	1959				\$ 322,715
	1958				312,769

FRUIT AND NUT CROPS; ACREAGE, PRODUCTION AND VALUE

Crop	Year	Bearing Acreage	Productions (tons)		Value	
			Per Acre	Total	Per Ton	Total
Apples	1959	28	1.5	42	\$100.	\$ 4,200
	1958	31	1	31	140.	
Grapes, Wine	1959	644	1.8	1159.	76.	88,084
	1958	632	2.1	1327	76.	100,852
Prunes	1959	128	.48	61.4	310.	19,034
	1958	128	.45	57.6	350.	20,160
Walnuts	1959	202	.44	88.2	430.	37,926
	1958	197	.52	102.4	410.	41,984
Miscellaneous chestnuts, olives, filberts, peaches etc.	1959	49				11,460
	1958	23				3,900
TOTALS	1959	1,051				\$ 160,719
	1958	1,011				171,236