

Amador County



Department of Agriculture
2001 Report of Agriculture

Cover photo is of the 2001 Agricultural Commissioner's staff. Listed from left to right: Robert Farnham, Carolyn Scalabrino, Barry Clark, Patricia Lesky, Michael Boitano. Not present Alisha Daniel.

A special thank you to Scott Oneto of the University of California Cooperative Extension for his participation on the completion of this report.



May 22, 2002

William J. Lyons Jr., Secretary
California Department of Food and Agriculture
and
The Honorable Board of Supervisors
County of Amador

In accordance with Section 2279 and 2272 of the California Food and Agricultural Code, I am pleased to present the 2001 Crop and Livestock Report of Agricultural Production and Report of Sustainable Agriculture in Amador County.

The total gross valuation for all agricultural commodities produced in 2001 was \$27,168,458. This represents a decrease of 16.95 percent from the 2000 gross production values.

Significant commodity group changes when compared to 2000 values were: Livestock decreased by 27.02 percent and Timber decreased by 45.61 percent.

The value of the 2001 Wine Grape Production increased by 1.91 percent and is Amador County's leading commodity.

These production values only partially reflect the overall measure of the economic impact agriculture has on the local economy. Processing, transporting, marketing and other farm-related services significantly multiply the value agriculture has to Amador County.

It must be emphasized that this report deals with gross value of production only and does not attempt to reflect net farm income.

I would like to thank all the individuals, producers, processors, government agencies and others whose cooperation and assistance contributed in preparing this report. My sincerest thanks and appreciation must also be extended to Carolyn Scalabrino and Barry Clark as well as all department staff for their efforts in compiling and finalizing this report.

Respectfully submitted,

A handwritten signature in black ink, appearing to read "Michael E. Boitano", written over a horizontal line.

Michael E. Boitano
Agricultural Commissioner/Sealer

AMADOR COUNTY

BOARD OF SUPERVISORS

RICH F. ESCAMILLA, CHAIRMAN
RICHARD FORSTER
RICHARD P. VINSON
LOUIS D. BOITANO
MARIO BIAGI

FIRST DISTRICT
SECOND DISTRICT
THIRD DISTRICT
FOURTH DISTRICT
FIFTH DISTRICT

DEPARTMENT OF AGRICULTURE

AGRICULTURAL COMMISSIONER
SEALER OF WEIGHTS AND MEASURES

MICHAEL E. BOITANO

AGRICULTURAL AND STANDARDS INSPECTORS

ROBERT L. FARNHAM
PATRICIA M. LESKY
BARRY P. CLARK

AGRICULTURAL TECHNICIAN

ALISHA DANIEL

ADMINISTRATIVE SECRETARY

CAROLYN SCALABRINO

FRUIT AND NUT CROPS

	YEAR	HARVESTED ACRES	PROD. / ACRE	TOTAL UNITS	PRICE / UNIT	TOTAL VALUE
GRAPES *	2001	3641	3.5	12,743	\$1,000	\$12,743,000
	2000	3458	3.6	12,449	\$1,000	\$12,449,000
WALNUTS	2001	436	1.09	476	\$940	\$447,440
	2000	466	0.46	215	\$980	\$210,700
MISC **	2001	17				\$40,799
	2000	34				\$87,510
TOTALS	2001	4094				\$13,231,239
	2000	3958				\$12,747,210

* Weighted Average Determination

** Boysenberries, Apples, Prunes, Olive Oil

MISCELLANEOUS PRODUCTION AND VALUE

	YEAR	TOTAL VALUE
FRESH VEGETABLES *	2001	\$187,500
	2000	\$145,200
CHRISTMAS TREES	2001	\$65,625
	2000	\$56,250
NURSERY STOCK	2001	\$175,000
	2000	\$160,000
TOTALS	2001	\$428,125
	2000	\$361,450

* Includes Farmers Market



FIELD CROPS

	YEAR	HARVESTED ACRES	PROD. / ACRE	TOTAL UNITS	PRICE/ UNIT	TOTAL VALUE
HAY, ALFALFA	2001	511	6.4	3,270	\$100	\$327,000
	2000	444	4	1,776	\$100	\$177,600
HAY, GRAIN	2001	784	7	5,488	\$81	\$444,528
	2000	800	4	3,200	\$78	\$249,600
HAY, OTHER	2001	400	3	1,200	\$85	\$102,000
	2000	400	1.5	600	\$80	\$48,000
PASTURE IRRIGATED	2001	1,800			\$128	\$230,400
	2000	1,800			\$128	\$230,400
PASTURE & RANGE	2001	167,000			\$11	\$1,837,000
	2000	167,000			\$11	\$1,837,000
CORN	2001	403	5.4	2,176	\$83	\$180,608
	2000	343	5	1,715	\$85	\$145,775
MISC. CROPS*	2001	123				\$25,053
	2000	251				\$132,572
TOTALS	2001	171,021				\$3,146,589
	2000	171,038				\$2,820,947

* Sugar Beets, Safflower, Sudangrass, Oats

TIMBER AND RELATED PRODUCTS

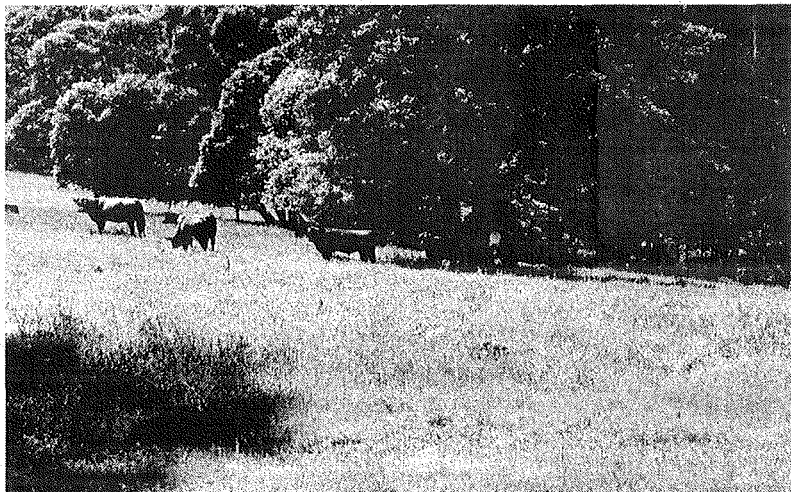
YEAR	HARVESTED BOARD FEET	TOTAL VALUE
2001	17,079 MBF	\$5,428,799
2000	28,423 MBF	\$9,982,039

LIVESTOCK AND POULTRY

	YEAR	NUMBER OF HEAD	WEIGHT (CWT)	PRICE/ UNIT	TOTAL VALUE
CATTLE & CALVES	2001	12,000	78,000	\$53.80	\$4,196,400
	2000	12,000	78,000	\$77.63	\$6,055,140
HOGS & PIGS	2001	200	480	\$45.00	\$21,600
	2000	200	480	\$42.10	\$20,208
SHEEP & LAMBS	2001	1,100	1,320	\$67.30	\$88,836
	2000	1,100	1,320	\$84.58	\$111,646
GOATS (ANGORA)	2001	300	300	\$48.00	\$14,400
	2000	300	300	\$46.00	\$13,800
MISC.*	2001				\$591,141
	2000				\$530,371
TOTALS	2001	13,600			\$4,912,377
	2000	13,600			\$6,731,165

* Includes milk goats, meat goats, rabbits, game birds, fish, worms, apiary

LIVESTOCK AND POULTRY PRODUCTS	YEAR	TOTAL VALUE
WOOL, MOHAIR AND APIARY PRODUCTS	2001	\$21,329
	2000	\$30,915



SUSTAINABLE AGRICULTURAL REPORT

BIOLOGICAL CONTROL PROGRAMS

PEST	AGENT/MECHANISM	PROGRAM
KLAMATH WEED	KLAMATH WEED BEETLE	COUNTY WIDE
ITALIAN THISTLE	SEEDHEAD WEEVIL	COUNTY WIDE
PUNCTURE VINE	STEM & SEED WEEVIL	COUNTY WIDE
ASH WHITE FLY	ENCARSIA WASP	COUNTY WIDE
YELLOW STAR THISTLE	BANGASTER NUS ORIENTALIS	COUNTY WIDE
YELLOW STAR THISTLE	EUSTENOPUS VILLOSUS	COUNTY WIDE
YELLOW STAR THISTLE	LARINUS CURTUS WEEVIL	14 SITES
YELLOW STAR THISTLE	YELLOW STAR THISTLE GALL FLY	COUNTY WIDE
YELLOW STAR THISTLE	YELLOW STAR THISTLE SEEDHEAD FLY	COUNTY WIDE

PEST PREVENTION ACTIVITIES

PEST ERADICATION

PEST	METHOD	SITES
SKELETON WEED	CHEMICAL	50 SITES
DIFFUSE KNAWWEED	HAND PULLED	3 SITES
SPOTTED KNAWWEED	HAND PULLED	1 SITE

PEST EXCLUSION

TYPE	SHIPMENTS INSPECTED	REJECTIONS
TRUCKS	19	0
GYPSY MOTH	0	0
OTHER	10	0

PEST MANAGEMENT

TYPE	SHIPMENTS INSPECTED	REJECTIONS
GLASSY-WINGED SHARPSHOOTER	43	0
TYPE	NUMBER OF TRAPS	
GLASSY-WINGED SHARPSHOOTER	171	

PEST DETECTION

INSECT TRAPPING PROGRAM

TYPE OF TRAP	NUMBER OF TRAPS
GYPSY MOTH	150
MEDITERRANEAN FRUIT FLY	33
JAPANESE BEETLE	25
ORIENTAL FRUIT FLY	11
MELON FRUIT FLY	11

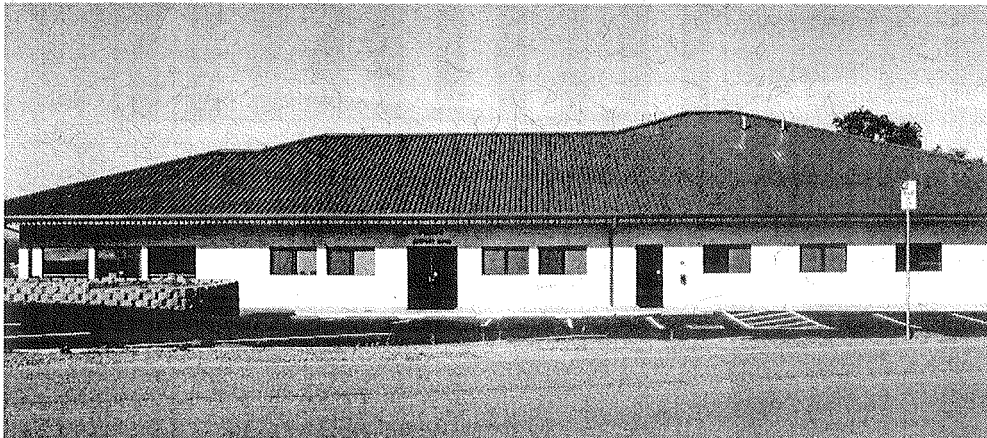
ORGANIC FARMING STATISTICS

TYPE OF FARM	NUMBER OF FARMS
VEGETABLES	3
WINE GRAPES	5

RECAPITULATION		
	2000	2001
TIMBER	\$9,982,039	\$5,428,799
LIVESTOCK	\$6,731,165	\$4,912,377
FRUIT AND NUT CROPS	\$12,747,210	\$13,231,239
FIELD CROPS	\$2,820,947	\$3,146,589
MISCELLANEOUS	\$361,450	\$428,125
LIVESTOCK AND POULTRY PRODUCTS	\$30,915	\$21,329
GRAND TOTAL	\$32,673,726	\$27,168,458

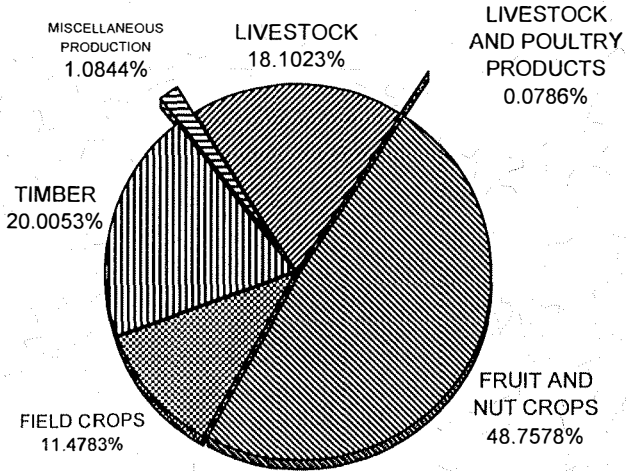
STATISTICS	
TOTAL LAND AREA	363,500 acres
WILLIAMSON ACT LAND	93,000 acres
EL DORADO NATIONAL FOREST	78,079 acres
BLM LAND	9,191 acres
TIMBER PRESERVE LAND	27,485 acres
PASTURE AND RANGELAND	167,000 acres
LAND IN FARMS	218,000 acres
FARMS IN COUNTY	376

TOTAL FOR THE PAST TEN YEARS			
1992	\$24,533,341	1997	\$23,779,190
1993	\$25,424,265	1998	\$24,825,576
1994	\$24,886,801	1999	\$28,087,630
1995	\$24,833,902	2000	\$32,673,726
1996	\$29,209,735	2001	\$27,168,458



Amador County Agriculture Commissioner's Office

2000 CROP REPORT



Ten Year Comparison

