

# **AMADOR COUNTY TAX COLLECTOR**

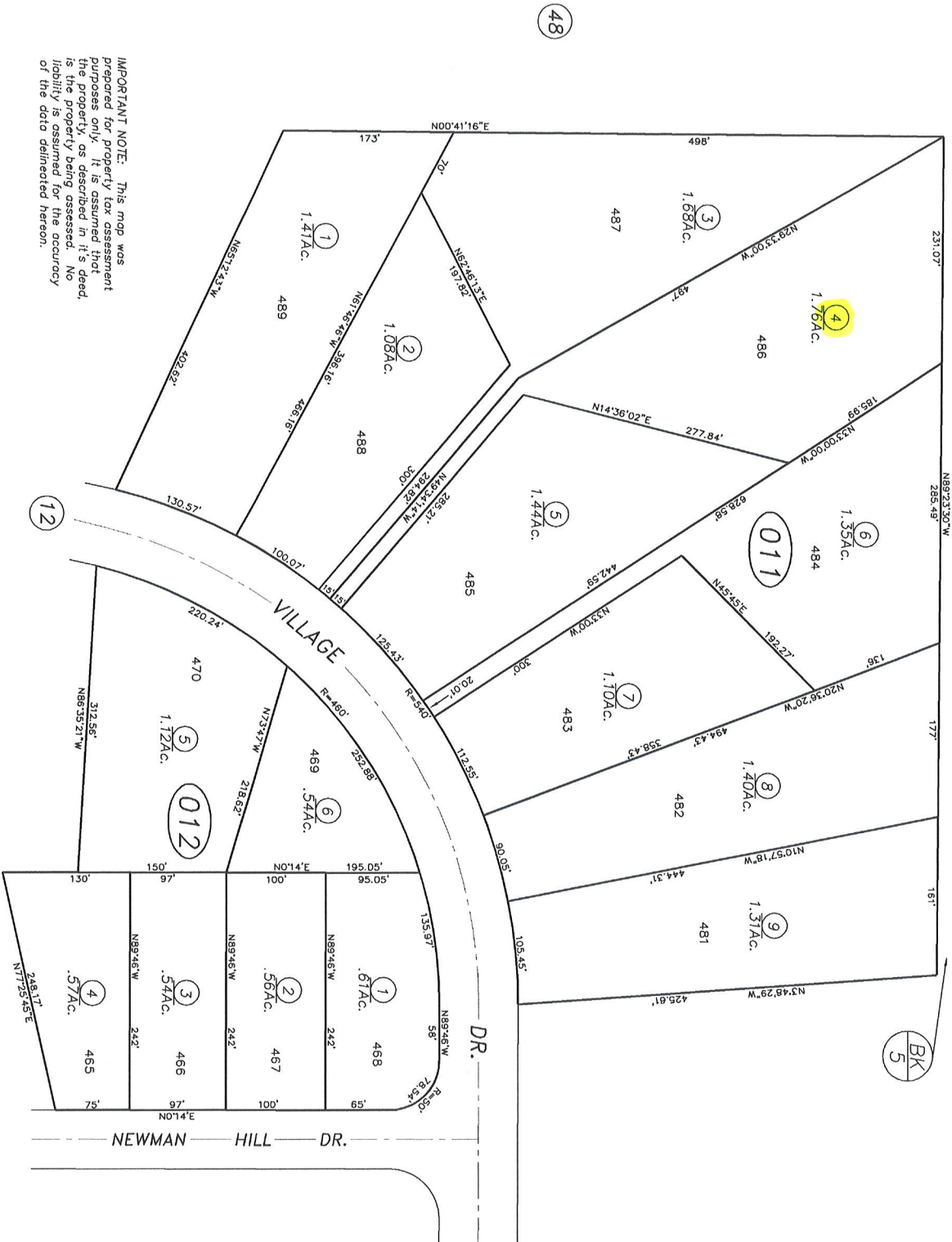
**2018 TAX SALE PARCELS  
(MARCH 21, 2018)**

**ASSESSOR'S PARCEL MAPS**

TSMAPS

POR. SEC. 21, T.5N., R.9E., M.D.B.&M.

3-01

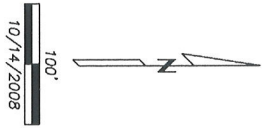


**IMPORTANT NOTE:** This map was prepared for property tax assessment purposes only. It is assumed that the property, as described in it's deed, is the property being assessed. No liability is assumed for the accuracy of the data delineated hereon.

R.M. Bk. 3, Sub. Pg. 8—Lake Camanche Village Unit No. 1

NOTE—Assessor's Block Numbers Shown in Ellipses. Assessor's Parcel Numbers Shown in Circles.

Assessor's Map Bk. 3, Pg. 01  
County of Amador, Calif.

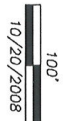
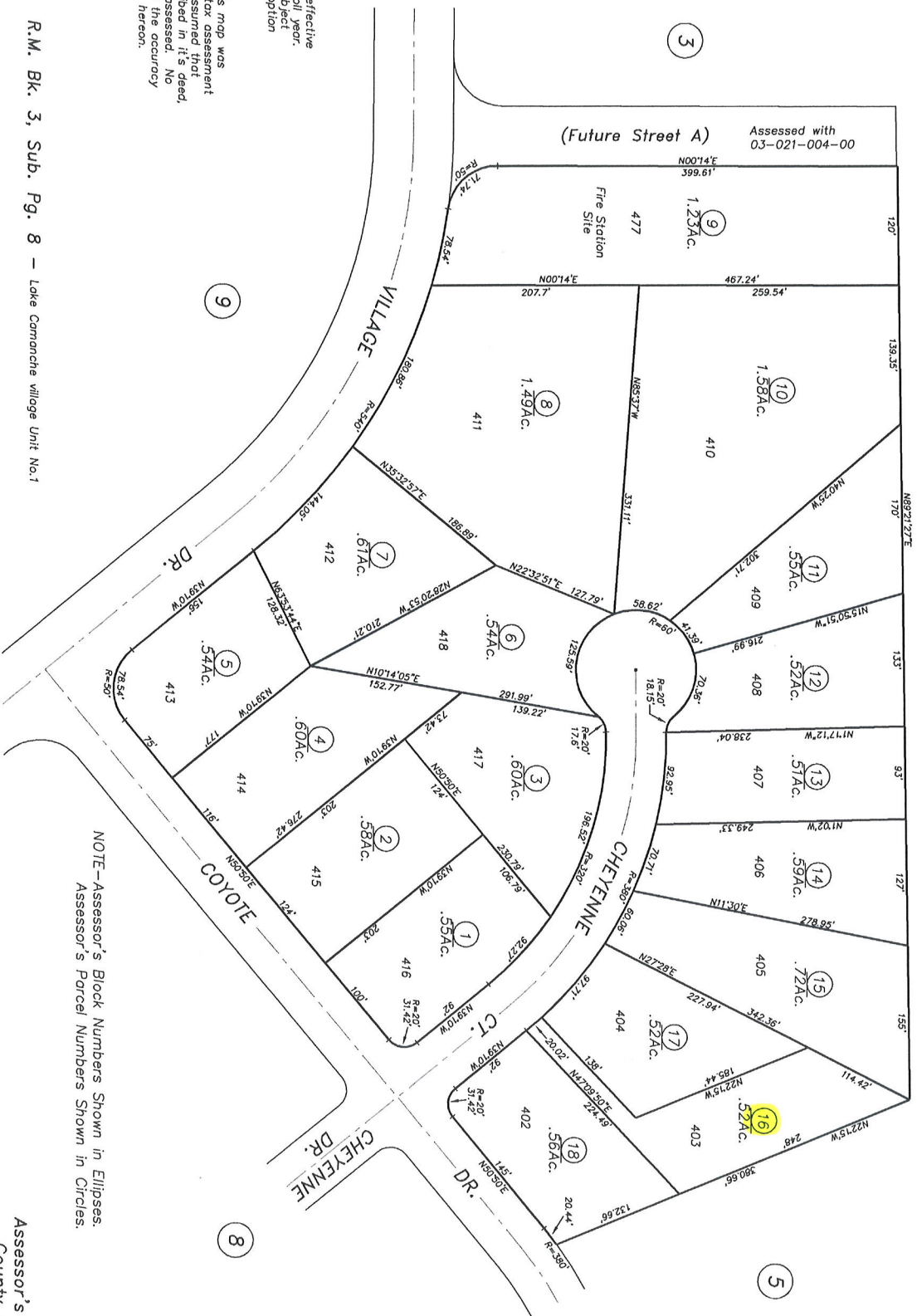


POR. SEC. 22, T.5N, R.9E, M.D.B.&M.

Tax Area Code  
52-038

3-04

Bk  
5



Map changes become effective with the 2005-2006 roll year. Parcel numbers are subject to change prior to adoption of roll on each July 1.

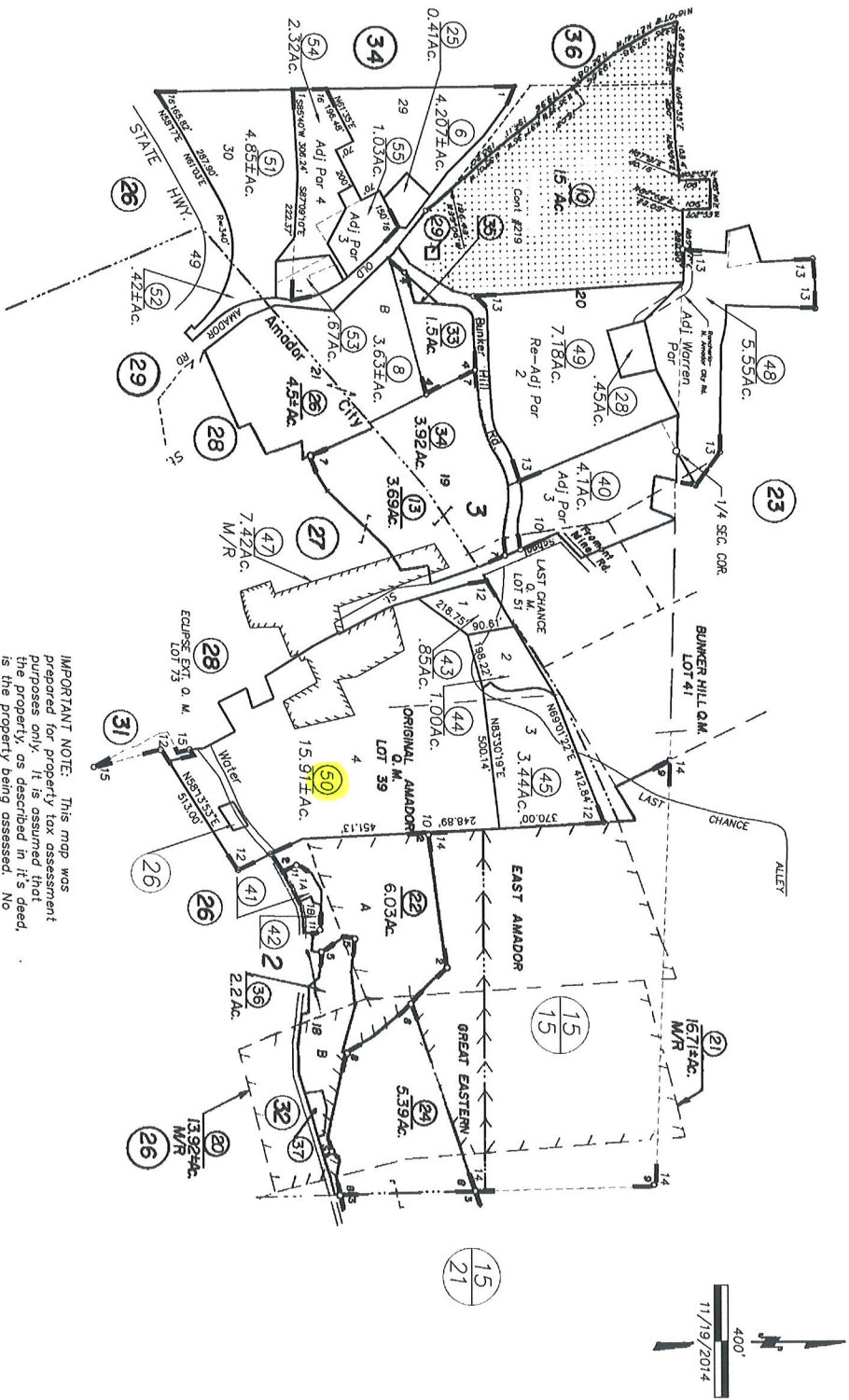
**IMPORTANT NOTE:** This map was prepared for property tax assessment purposes only. It is assumed that the property, as described in it's deed, is the property being assessed. No liability is assumed for the accuracy of the data delineated hereon.

NOTE-Assessor's Block Numbers Shown in Ellipses.  
Assessor's Parcel Numbers Shown in Circles.

R.M. Bk. 3, Sub. Pg. 8 - Lake Camanche village Unit No.1

Assessor's Map Bk. 3, Pg. 04  
County of Amador, Calif.





**IMPORTANT NOTE:** This map was prepared for property tax assessment purposes only. It is assumed that the property, as described in its deed, is the property being assessed. No liability is assumed for the accuracy of the data delineated herein.

Map changes become effective with the 2008-2009 roll year. Parcel numbers are subject to change prior to adoption of roll on each July 1.

- 1- R.M. Bk. 11, Pg. 3
- 2- R.M. Bk. 11, Pg. 70
- 3- R.M. Bk. 12, Pg. 84
- 4- P.M. Bk. 9, Pg. 98
- 5- R.M. Bk. 41, Pg. 82
- 6- P.M. Bk. 42, Pt. 37
- 7- R.M. Bk. 42, Pg. 100 (8/23/88)
- 8- R.M. Bk. 44, Pg. 09 (11/1/89)
- 9- R.M. Bk. 44, Pg. 88 (9/10/90)
- 10- R.M. Bk. 55, Pg. 82 (8/1/2003)
- 11- P.M. Bk. 58, Pg. 13 (8/26/2005)
- 12- P.M. Bk. 58, Pg. 79 (4/28/2006)
- 13- R.M. Bk. 58, Pg. 86 (5/24/2006)
- 14- R.M. Bk. 59, Pg. 75 (6/21/2007)
- 15- P.M. Bk. 62, Pg. 15 (12/17/2009)
- 16- P.M. Bk. 62, Pg. 91 (12/29/2010)(REF)

**NOTE**—Assessor's Block Numbers Shown in Ellipses.  
Assessor's Parcel Numbers Shown in Circles.

Assessor's Map Bk. 8, Pg. 25  
County of Amador, Calif.

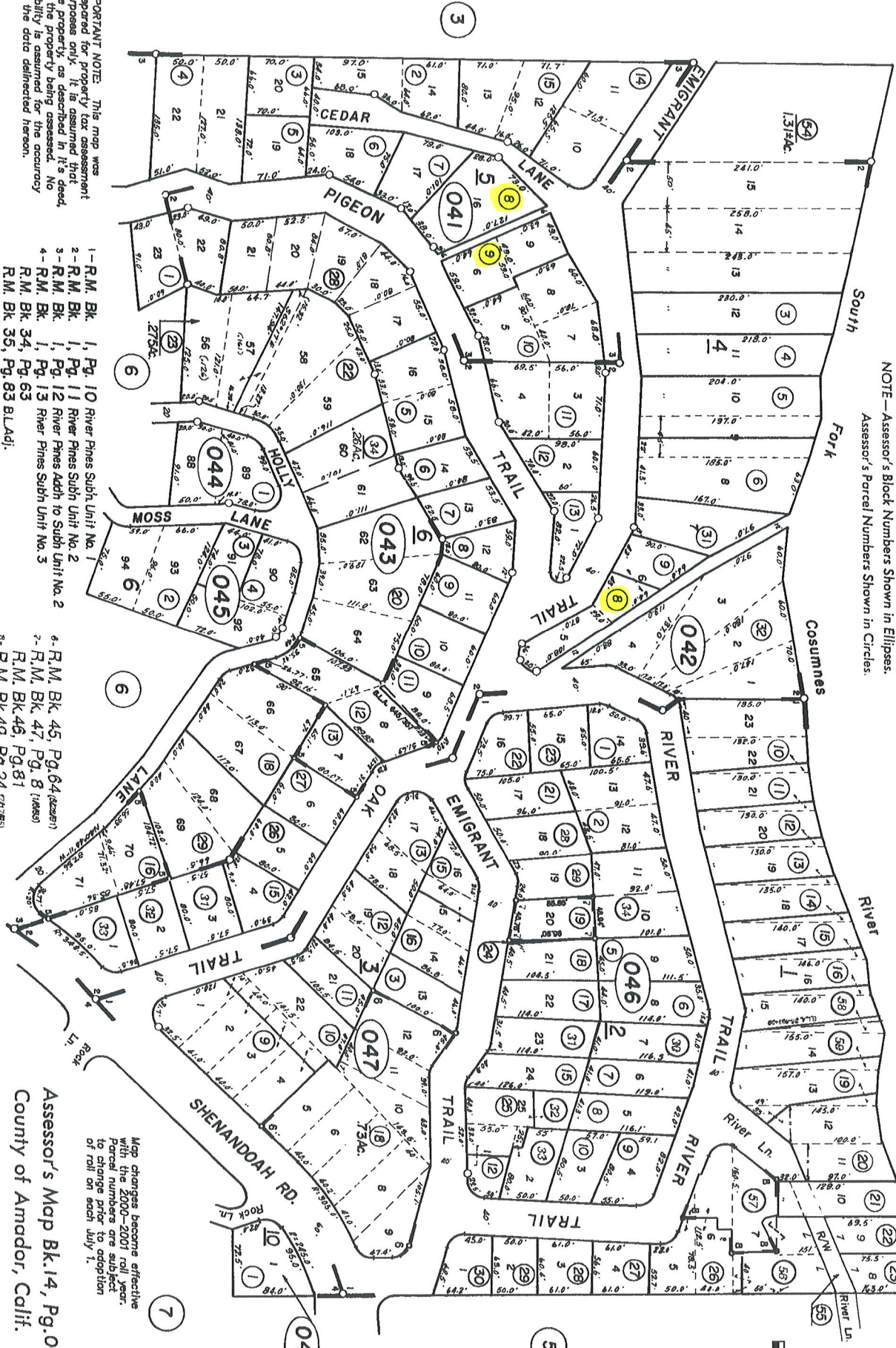
(55)

**POR. SEC. 15, T8N., R.11E., M.D.B. 8 M.**

Tax Area Code  
52-003

14-04

NOTE—Assessor's Block Numbers Shown in Ellipses.  
Assessor's Parcel Numbers Shown in Circles.

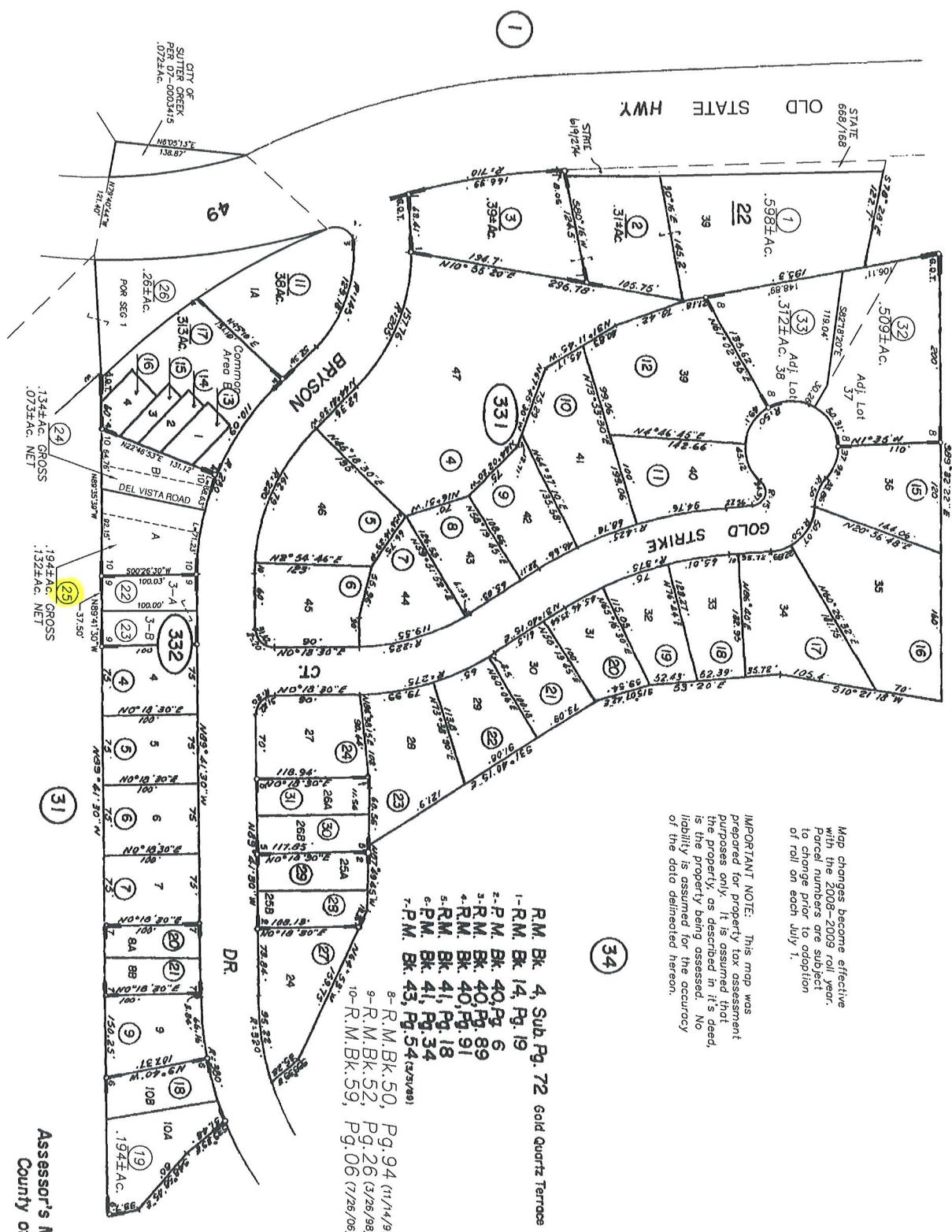


**IMPORTANT NOTE:** This map was prepared for property tax assessment purposes only. It is assumed that the property, as described in its deed, is the property being assessed. No liability is assumed for the accuracy of the data delineated hereon.

- 1—R.M. Bk. 1, Pg. 10 River Pines Subh Unit No. 1
- 2—R.M. Bk. 1, Pg. 11 River Pines Subh Unit No. 2
- 3—R.M. Bk. 1, Pg. 12 River Pines Subh Unit No. 3
- 4—R.M. Bk. 1, Pg. 13 River Pines Subh Unit No. 3
- R.M. Bk. 34, Pg. 63
- R.M. Bk. 35, Pg. 83 BLAdi.
- 5—R.M. Bk. 37, Pg. 32
- 6—R.M. Bk. 45, Pg. 64 (L2581)
- 7—R.M. Bk. 47, Pg. 8 (L2689)
- R.M. Bk. 46, Pg. 81
- 8—R.M. Bk. 49, Pg. 24 (L71785)

Map changes become effective with the 2000-2001 roll. Parcel numbers are subject to change prior to adoption of roll on each July 1.

Assessor's Map Bk. 14, Pg. 04  
County of Amador, Calif.



Map changes become effective with the 2008-2009 roll year. Parcel changes are subject to change prior to adoption of roll on each July 1.

IMPORTANT NOTE: This map was prepared for property tax assessment purposes only. It is assumed that the property as described in it's deed, is the property being assessed. No liability is assumed for the accuracy of the data delineated hereon.

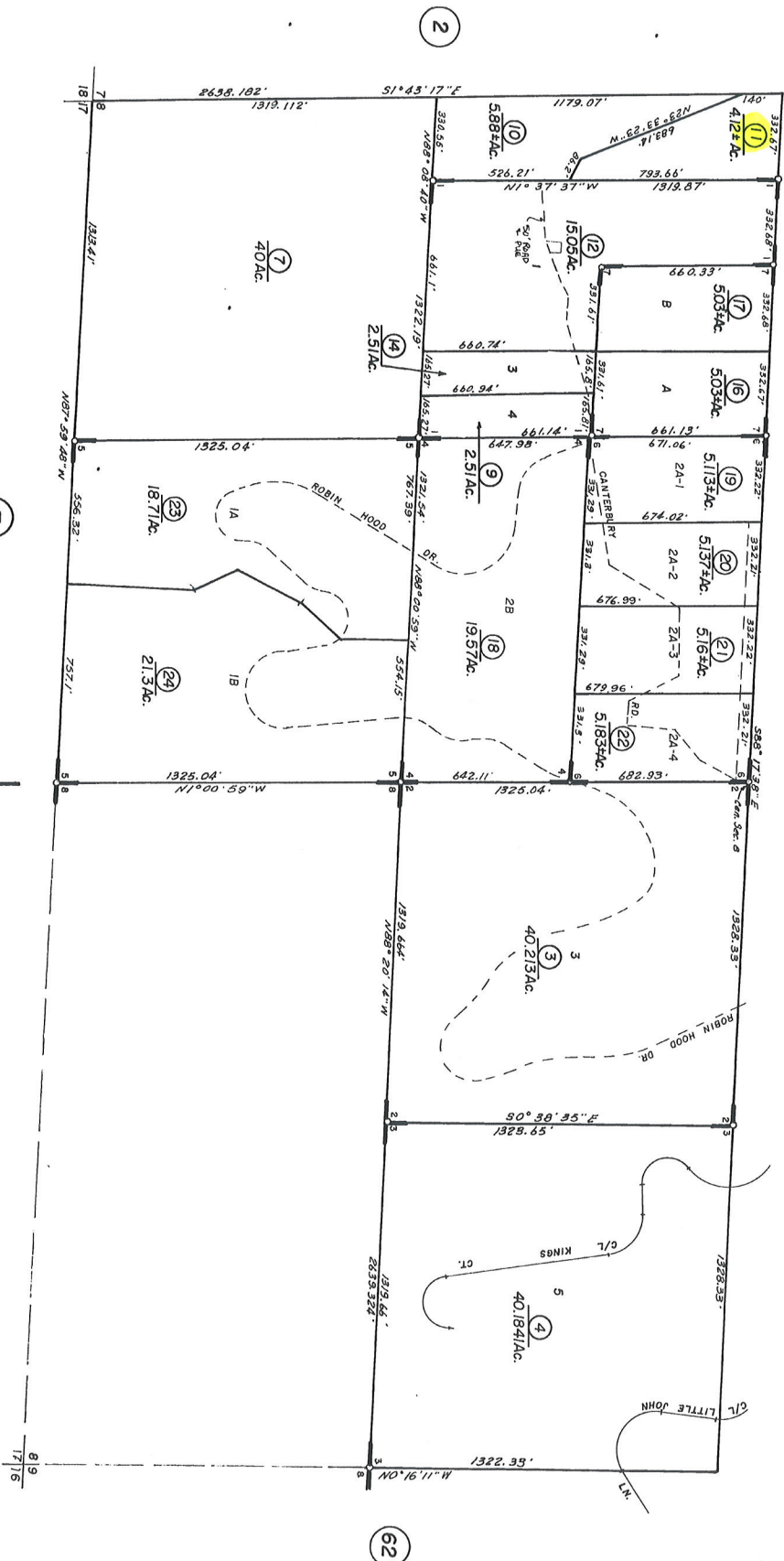
- 1-R.M. Bk. 4, Sub Pg. 72 Gold Quartz Terrace
- 2-P.M. Bk. 40, Pg. 6
- 3-R.M. Bk. 40, Pg. 89
- 4-R.M. Bk. 40, Pg. 91
- 5-R.M. Bk. 41, Pg. 18
- 6-P.M. Bk. 41, Pg. 34
- 7-P.M. Bk. 43, Pg. 54 (2/25/98)
- 8-R.M. Bk. 50, Pg. 94 (11/4/97)
- 9-R.M. Bk. 52, Pg. 26 (3/25/98)
- 10-R.M. Bk. 59, Pg. 06 (7/25/06)

Assessor's Map Bk. 18, Pg. 33  
County of Amador, Calif.

S 1/2 SEC. 8, T.7N., R.13E., M.D.B. & M.

Tax Area Code  
52-034

23-63



1/23 6/11 90-91

- 1-R.M. Bk. 15, Pg. 73
- 2-R.M. Bk. 16, Pg. 37
- 3-R.M. Bk. 16, Pg. 49-Sherwood Forest
- 4-R.M. Bk. 17, Pg. 54
- 5-R.M. Bk. 17, Pg. 77
- 6-R.M. Bk. 18, Pg. 27
- 7-R.M. Bk. 23, Pg. 62
- 8-R.M. Bk. 31, Pg. 5 B.L.Adj.

R.M. Bk. 41, Pg. 73 Spring Easement

NOTE-Assessor's Block Numbers Shown in Ellipses.  
Assessor's Parcel Numbers Shown in Circles.

Assessor's Map Bk. 23, Pg. 63  
County of Amador, Calif.



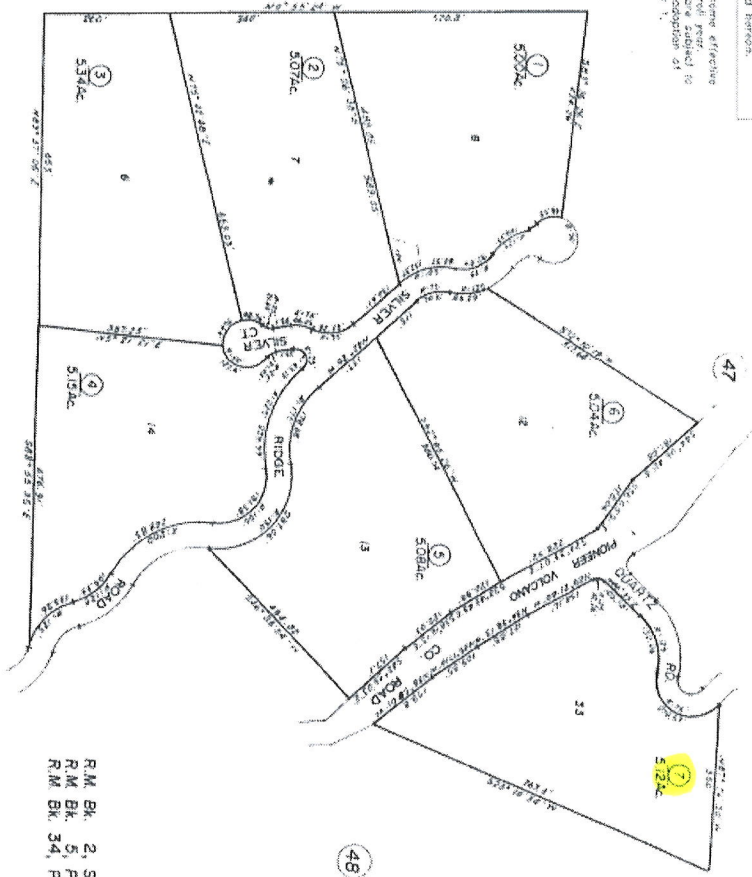
Por. Sec. 26, T.7N., R.12E.

Tax Area Code  
52-000

30-46

**IMPORTANT NOTE:** This map was prepared for property assessment purposes only. It is not intended to be used as a deed or title document. No liability is assumed for the accuracy of the data depicted hereon.

Map changes become effective after the 30th day following the date of publication. No change prior to adoption of roll on each July 1.

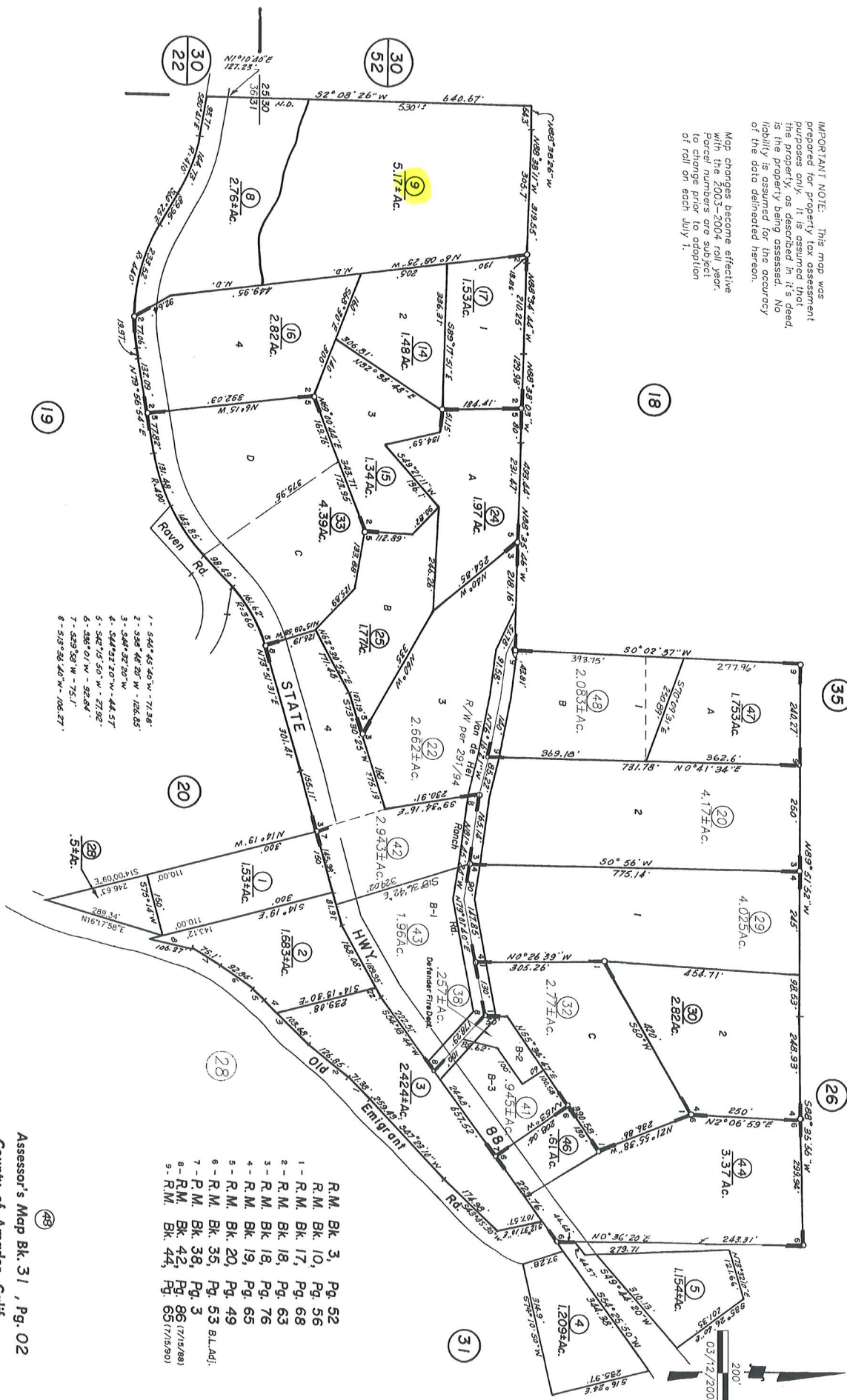


R.M. Bk. 2, Sub. Pg. 41 Pine Acres Ranchettes  
R.M. Bk. 5, Pg. 27  
R.M. Bk. 34, Pl. 48 B.L. 441

Assessor's Map Bk. 30, Pg. 46  
County of Amador, Calif

IMPORTANT NOTE: This map was prepared for property tax assessment purposes only. It is assumed that the property, as described in it's deed, is the property being assessed. No liability is assumed for the accuracy of the data delineated hereon.

Map changes become effective with the 2003-2004 roll year. Parcel numbers are subject to change prior to adoption of roll on each July 1.



Assessor's Map Bk. 31, Pg. 02  
 County of Amador, Calif.

- 1 - S44° 43' 40" W - 71.98'
- 2 - S36° 46' 20" W - 126.85'
- 3 - S44° 32' 20" W - 72.00'
- 4 - S44° 52' 20" W - 44.57'
- 5 - S42° 15' 50" W - 27.92'
- 6 - S86° 01' W - 92.64'
- 7 - S89° 58' W - 75.11'
- 8 - S18° 36' 40" W - 106.27'

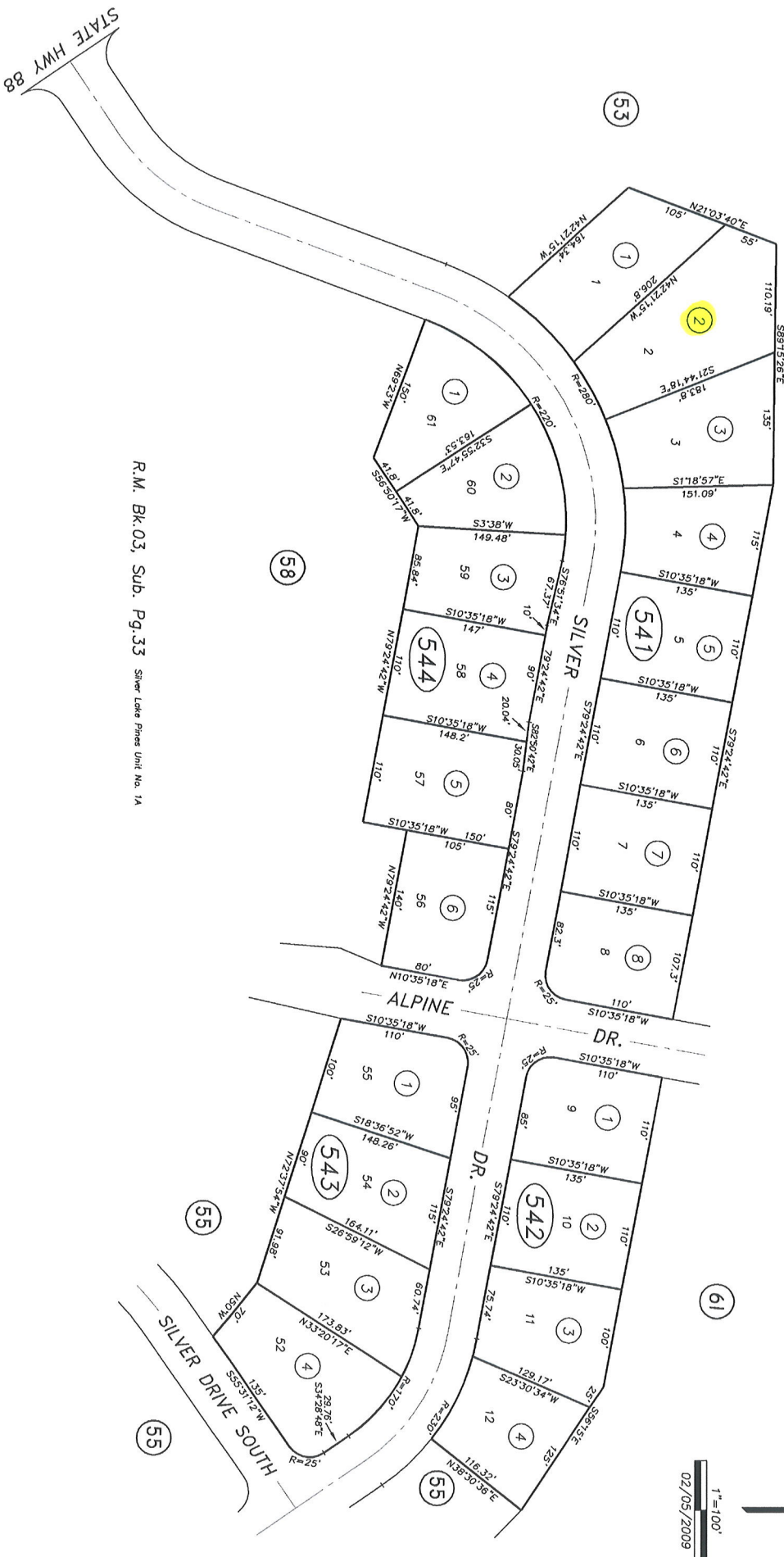
- R.M. Bk. 3, Pg. 52
- R.M. Bk. 10, Pg. 56
- 1 - R.M. Bk. 17, Pg. 68
- 2 - R.M. Bk. 18, Pg. 63
- 3 - R.M. Bk. 19, Pg. 65
- 4 - R.M. Bk. 20, Pg. 49
- 5 - R.M. Bk. 35, Pg. 53 B.L. Adj.
- 7 - P.M. Bk. 36, Pg. 3
- 8 - R.M. Bk. 42, Pg. 86 (7/15/88)
- 9 - R.M. Bk. 44, Pg. 65 (7/15/90)

IMPORTANT NOTE: This map was prepared for property tax assessment purposes only. It is assumed that the property, as described in its deed, is the property being assessed. No liability is assumed for the accuracy of the data delineated hereon.

POR. SEC'S 15 & 22, T. 7N., R. 13E., M.D.B. & M.

TAX AREA CODE  
52-009

33-54



R.M. Bk. 03, Sub. Pg. 33 Silver Lake Prices Unit No. 1A

NOTE—Assessor's Block Numbers Shown in Ellipses.  
Assessor's Parcel Numbers Shown in Circles.

Assessor's Map Bk. 33, Pg. 54  
County of Amador, Calif.





**IMPORTANT NOTE:** This map was prepared for property tax assessment purposes only. It is assumed that the property, as described in it's deed, is the property being assessed. No liability is assumed for the accuracy of the data delineated hereon.

Map changes become effective with the 2007-2008 roll year. Parcel numbers are subject to change prior to adoption of roll on each July 1.

- R.M.Bk. 34, Pg. 56 (3/20/81)
- 1-R.M.Bk. 6, Sub.Pg. 37 CALTA MANOR (8/5/90)
- 2-R.M.Bk. 49, Pg. 27 (8/16/95)
- 3-R.M.Bk. 7, Sub.Pg. 75 (9/3/02)

Assessor's Map Bk. 38, Pg. 62  
County of Amador, Calif.

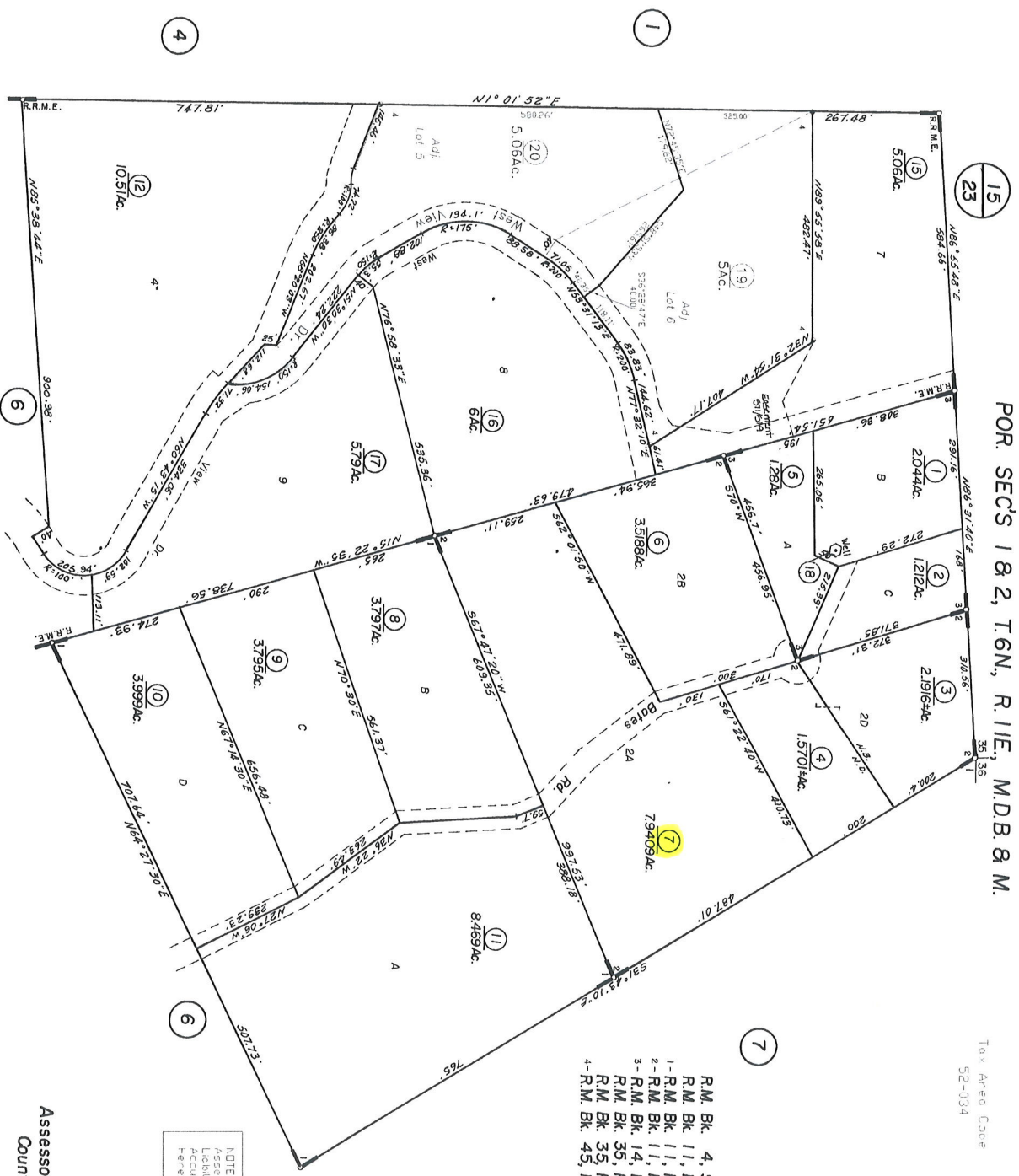
POR. SECS 1 & 2, T.6N, R.11E, M.D.B. & M.

Tax Area Code  
52-034

42-05



- R.M. Bk. 4, Sub. Pg. 78 Ridge Road Manor Estates
- R.M. Bk. 11, Pg. 40
- 1- R.M. Bk. 11, Pg. 72
- 2- R.M. Bk. 11, Pg. 89
- 3- R.M. Bk. 14, Pg. 79
- R.M. Bk. 35, Pg. 18 Easement
- R.M. Bk. 35, Pg. 60 Easement
- 4- R.M. Bk. 45, Pg. 89 (10/30/91)



NOTE: This Map Was Prepared For Assessment Purposes Only. No Liability Is Assumed For The Accuracy Of The Data Derived Hereon

Assessor's Map Bk. 42, Pg. 05  
County of Amador, Calif.