

# **AMADOR COUNTY TAX COLLECTOR**

**2019 TAX SALE PARCELS  
(MARCH 20, 2019)**

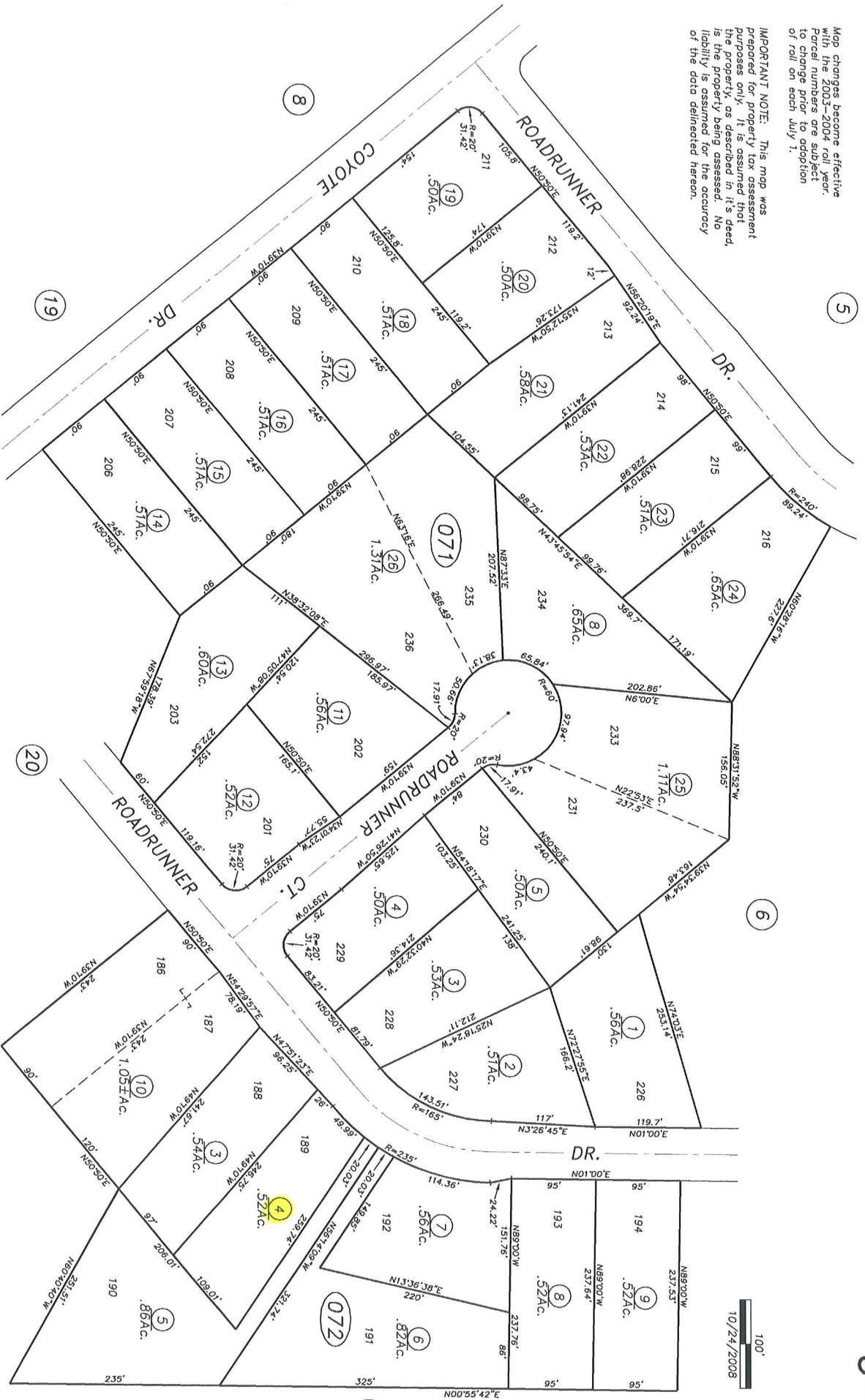
**ASSESSOR'S PARCEL MAPS**

Map changes become effective with the 2003-2004 roll year. Parcel numbers are subject to change prior to adoption of roll on each July 1.

**IMPORTANT NOTE:** This map was prepared for property tax assessment purposes only. It is assumed that the property, as described in its deed, is the property being assessed. No liability is assumed for the accuracy of the data delineated hereon.

POR. SEC. 22, T.5N, R.9E, M.D.B.8M.

3-07



1-R.M. Bk.3, Sub. Pg.8-Lake Camanche Village Unit No.1

NOTE-Assessor's Block Numbers Shown in Ellipses. Assessor's Parcel Numbers Shown in Circles.

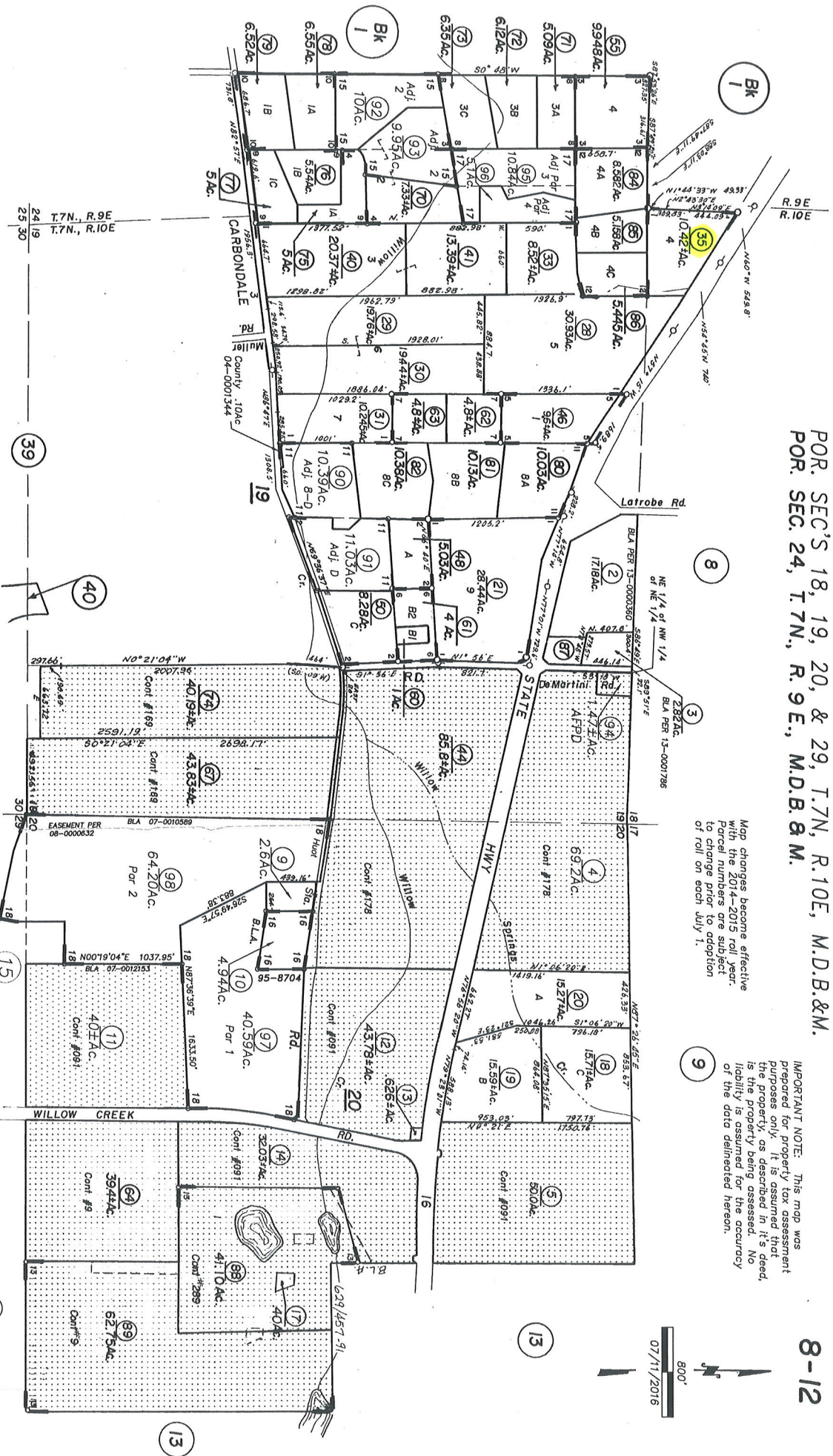
Assessor's Map Bk. 3, Pg. 07  
County of Amador, Calif.

POR. SEC'S 18, 19, 20, & 29, T.7N, R.10E, M.D.B.&M.  
 POR. SEC. 24, T.7N., R. 9 E., M.D.B. & M.

Map changes become effective with the 2014-2015 roll year. Parcel numbers are subject to change prior to adoption of roll on each July 1.

IMPORTANT NOTE: This map was prepared for property tax assessment purposes only. It is assumed that the property, as described in it's deed, is the property being assessed. No liability is assumed for the accuracy of the data delineated hereon.

800'  
 07/11/2016



- 1- R.M. Bk. 17, Pg. 2
- 2- R.M. Bk. 14, Pg. 6
- 3- R.M. Bk. 20, Pg. 1
- 4- R.M. Bk. 21, Pg. 55

- 5- R.M. Bk. 21, Pg. 88
- 6- R.M. Bk. 23, Pg. 8
- 7- R.M. Bk. 23, Pg. 30
- 8- R.M. Bk. 25, Pg. 41
- 9- R.M. Bk. 25, Pg. 63

- 9- R.M. Bk. 25, Pg. 64
- 10- R.M. Bk. 25, Pg. 73
- 11- R.M. Bk. 27, Pg. 31
- 12- R.M. Bk. 27, Pg. 17
- 13- R.M. Bk. 45, Pg. 36 (12/13/20)

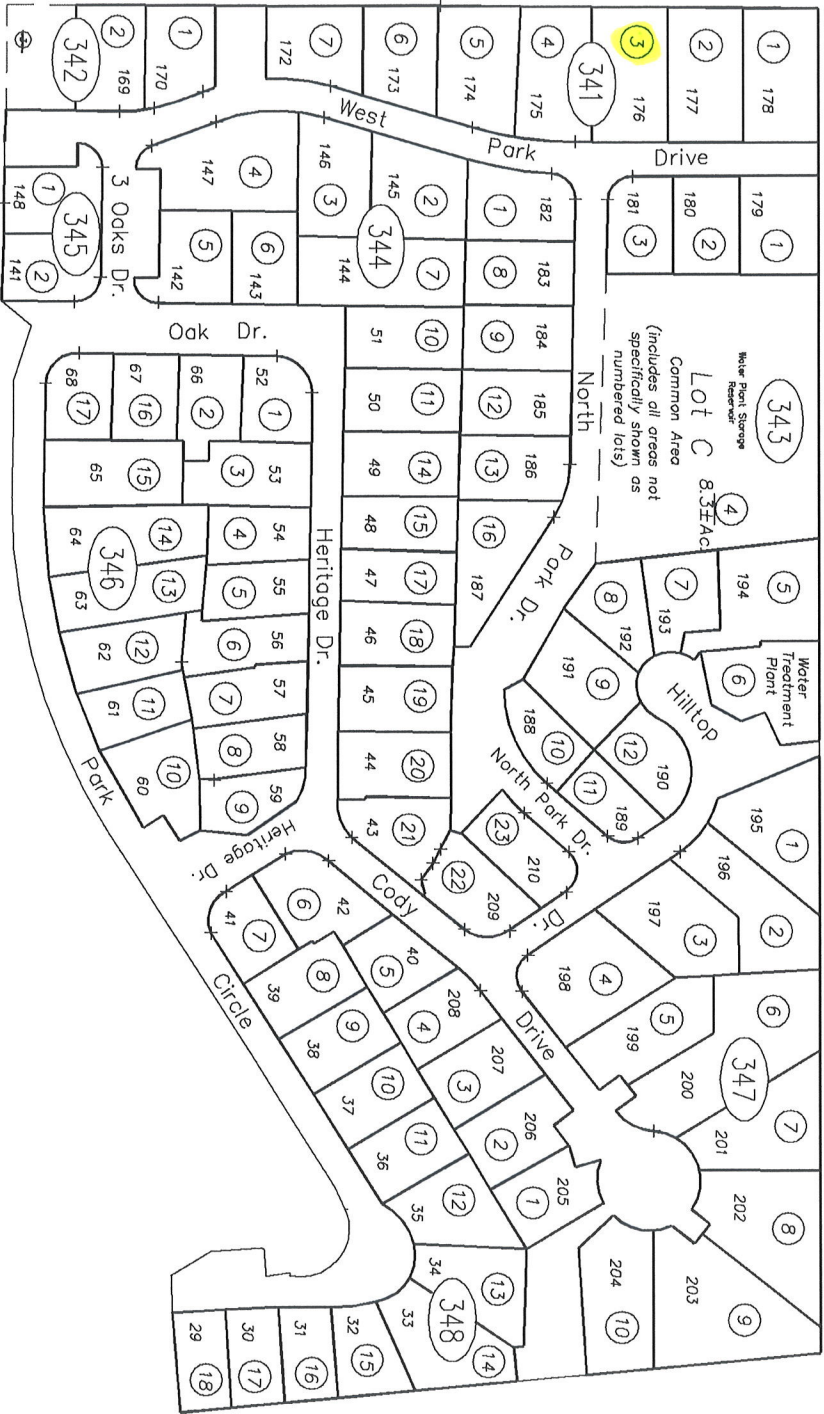
- 14- R.M. Bk. 47, Pg. 24 (12/17/93)
- 15- R.M. Bk. 47, Pg. 62 (6/29/94)
- 16- R.M. Bk. 49, Pg. 44 (11/17/95)
- 17- R.M. Bk. 54, Pg. 80 (6/21/2002)
- 18- R.M. Bk. 60, Pg. 44 (1/29/2009)

Assessor's Map Bk. 8, Pg. 12  
 County of Amador, Calif.



POR. RANCHO ARROYO SECO  
 POR. T.5N., R.10E., M.D.B. & M.

12-34



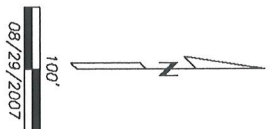
**IMPORTANT NOTE:** This map was prepared for property tax assessment purposes only. It is assumed that the property, as described in it's deed, is the property being assessed. No liability is assumed for the accuracy of the data delineated hereon.

Map changes become effective with the 2008-2009 roll year. Parcel numbers the subject to change prior to adoption of roll on each July 1.

R.M. Bk.6, Sub. Pg:98 (1/22/93) The Oaks Mobile Home Community

NOTE-Assessor's Block Numbers Shown in Ellipses.  
 Assessor's Parcel Numbers Shown in Circles.

Assessor's Map Bk.12, Pg.34  
 County of Amador, Calif.



IMPORTANT NOTE: This map was prepared for property tax assessment purposes only. It is assumed that the property, as described in it's deed, is the property being assessed. No liability is assumed for the accuracy of the data delineated hereon.

POR. SEC. 27, T.10N., R.17E., M.D.B. & M.

26-30



Map changes become effective with the 2008-2009 roll year. Parcel numbers are subject to change prior to adoption of roll on each July 1.

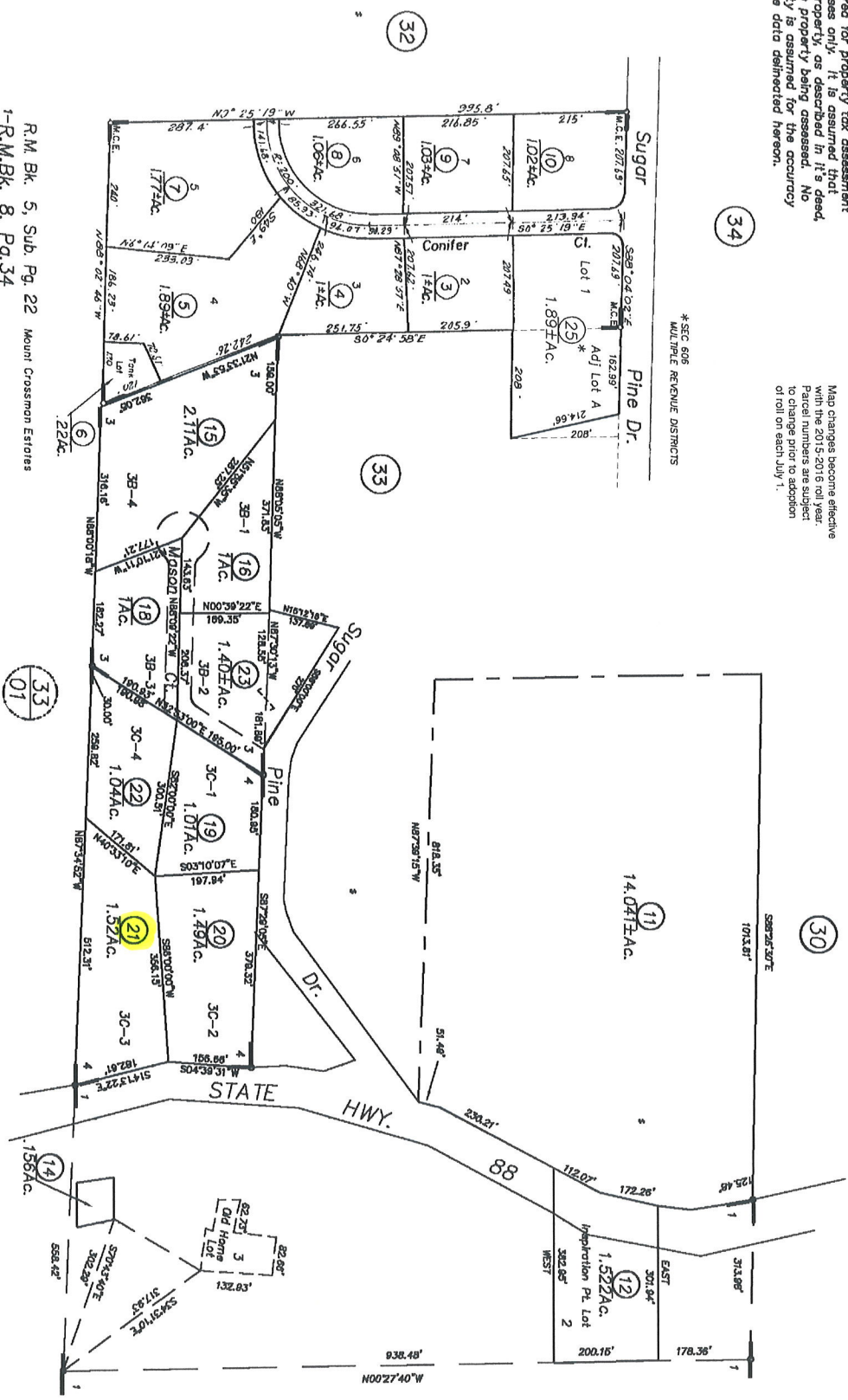
R.M. Bk. 9, Sub. Pg. 50 (11/16/2007) SENTINELS WEST AT KIRKWOOD

Assessor's Map Bk. 26, Pg. 30  
County of Amador, Calif.

IMPORTANT NOTE: This map was prepared for property tax assessment purposes only. It is assumed that the property, as described in it's deed, is the property being assessed. No liability is assumed for the accuracy of the data delineated hereon.

Map changes become effective with the 2015/2016 roll year. Parcel numbers are subject to change prior to adoption of roll on each July 1.

\* SEC. 606  
MULTIPLE REVENUE DISTRICTS



- R.M. Bk. 5, Sub. Pg. 22 Mount Crossman Estates
- 1-R.M.Bk. 8, Pg. 34
- 2-P.M.Bk. 28, Pg. 67
- 3-P.M.Bk. 34, Pg. 5
- 4-P.M.Bk. 45, Pg. 14
- 5-P.M.Bk. 49, Pg. 98 (6/7/98)

Assessor's Map Bk. 32, Pg. 48  
County of Amador, Calif.



(25)

(10)

(22)

(33)  
(01)

(34)

(32)

(33)

(30)

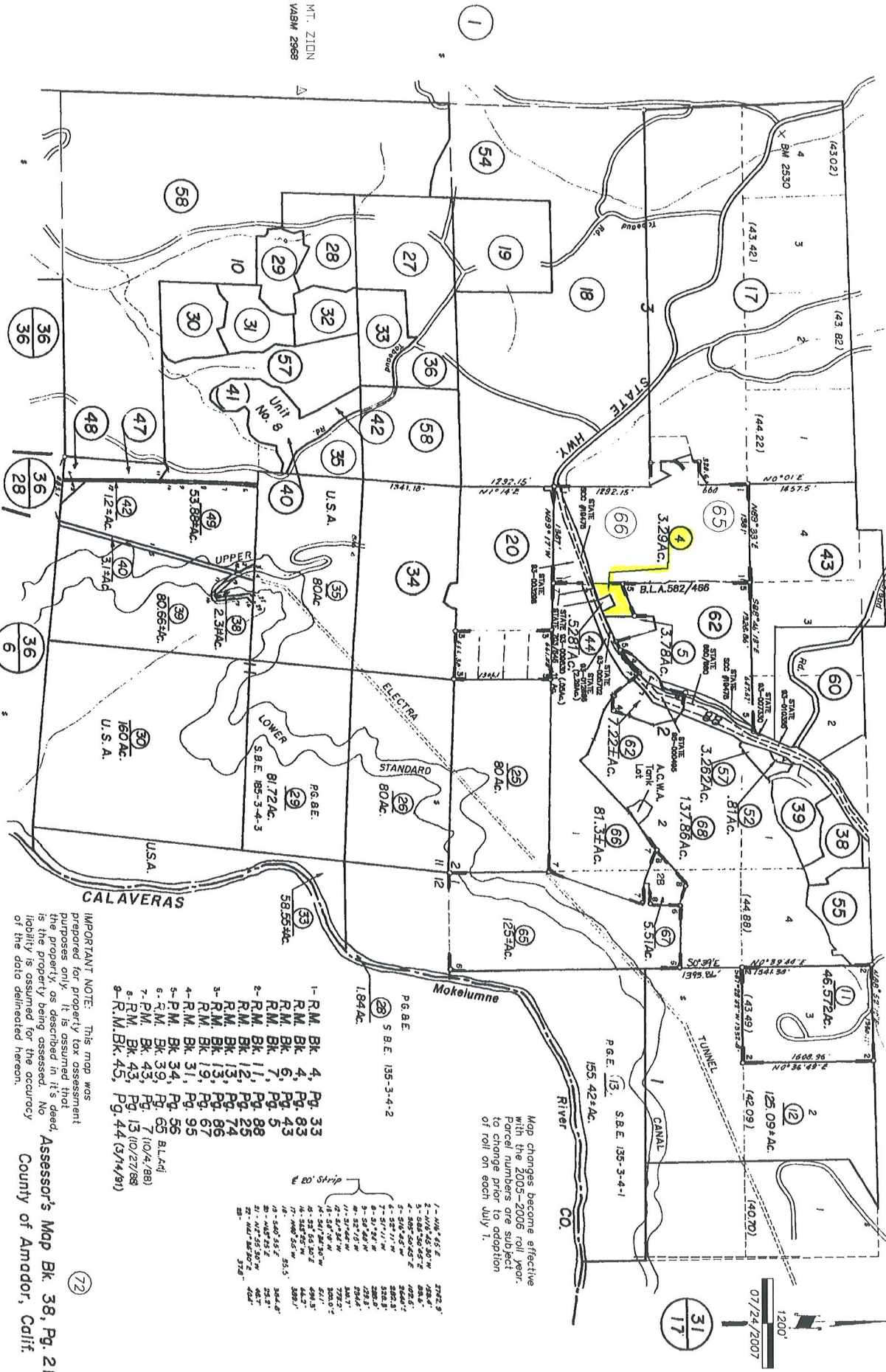


T. 6 N., R. 12 E.

30  
22

30  
36

38-21



Map changes become effective with the 2005-2006 roll year. Parcel numbers are subject to change prior to adoption of roll on each July 1.



**IMPORTANT NOTE:** This map was prepared for property tax assessment purposes only. It is assumed that the property, as described in its deed, is the property being assessed. No liability is assumed for the accuracy of the data delineated herein.

Assessor's Map Bk 38, Pg. 21  
County of Amador, Calif.

MT. ZION  
WASH 2968

- 1- R.M. Bk. 4, Pg. 33
- 2- R.M. Bk. 4, Pg. 83
- 3- R.M. Bk. 6, Pg. 43
- 4- R.M. Bk. 7, Pg. 5
- 5- R.M. Bk. 11, Pg. 88
- 6- R.M. Bk. 12, Pg. 23
- 7- R.M. Bk. 13, Pg. 74
- 8- R.M. Bk. 19, Pg. 86
- 9- R.M. Bk. 31, Pg. 95
- 10- R.M. Bk. 34, Pg. 56
- 11- R.M. Bk. 39, Pg. 65
- 12- R.M. Bk. 43, Pg. 7
- 13- R.M. Bk. 43, Pg. 13
- 14- R.M. Bk. 45, Pg. 44

20' Strip

1- 101° 45' 55" E.	2792.9'
2- 101° 45' 55" E.	108.4'
3- 101° 45' 55" E.	108.4'
4- 101° 45' 55" E.	108.4'
5- 101° 45' 55" E.	108.4'
6- 101° 45' 55" E.	108.4'
7- 101° 45' 55" E.	108.4'
8- 101° 45' 55" E.	108.4'
9- 101° 45' 55" E.	108.4'
10- 101° 45' 55" E.	108.4'
11- 101° 45' 55" E.	108.4'
12- 101° 45' 55" E.	108.4'
13- 101° 45' 55" E.	108.4'
14- 101° 45' 55" E.	108.4'
15- 101° 45' 55" E.	108.4'
16- 101° 45' 55" E.	108.4'
17- 101° 45' 55" E.	108.4'
18- 101° 45' 55" E.	108.4'
19- 101° 45' 55" E.	108.4'
20- 101° 45' 55" E.	108.4'
21- 101° 45' 55" E.	108.4'
22- 101° 45' 55" E.	108.4'
23- 101° 45' 55" E.	108.4'
24- 101° 45' 55" E.	108.4'
25- 101° 45' 55" E.	108.4'
26- 101° 45' 55" E.	108.4'
27- 101° 45' 55" E.	108.4'
28- 101° 45' 55" E.	108.4'
29- 101° 45' 55" E.	108.4'
30- 101° 45' 55" E.	108.4'
31- 101° 45' 55" E.	108.4'
32- 101° 45' 55" E.	108.4'
33- 101° 45' 55" E.	108.4'
34- 101° 45' 55" E.	108.4'
35- 101° 45' 55" E.	108.4'
36- 101° 45' 55" E.	108.4'
37- 101° 45' 55" E.	108.4'
38- 101° 45' 55" E.	108.4'
39- 101° 45' 55" E.	108.4'
40- 101° 45' 55" E.	108.4'
41- 101° 45' 55" E.	108.4'
42- 101° 45' 55" E.	108.4'
43- 101° 45' 55" E.	108.4'
44- 101° 45' 55" E.	108.4'
45- 101° 45' 55" E.	108.4'
46- 101° 45' 55" E.	108.4'
47- 101° 45' 55" E.	108.4'
48- 101° 45' 55" E.	108.4'
49- 101° 45' 55" E.	108.4'
50- 101° 45' 55" E.	108.4'
51- 101° 45' 55" E.	108.4'
52- 101° 45' 55" E.	108.4'
53- 101° 45' 55" E.	108.4'
54- 101° 45' 55" E.	108.4'
55- 101° 45' 55" E.	108.4'
56- 101° 45' 55" E.	108.4'
57- 101° 45' 55" E.	108.4'
58- 101° 45' 55" E.	108.4'
59- 101° 45' 55" E.	108.4'
60- 101° 45' 55" E.	108.4'
61- 101° 45' 55" E.	108.4'
62- 101° 45' 55" E.	108.4'
63- 101° 45' 55" E.	108.4'
64- 101° 45' 55" E.	108.4'
65- 101° 45' 55" E.	108.4'
66- 101° 45' 55" E.	108.4'
67- 101° 45' 55" E.	108.4'
68- 101° 45' 55" E.	108.4'
69- 101° 45' 55" E.	108.4'
70- 101° 45' 55" E.	108.4'
71- 101° 45' 55" E.	108.4'
72- 101° 45' 55" E.	108.4'
73- 101° 45' 55" E.	108.4'
74- 101° 45' 55" E.	108.4'
75- 101° 45' 55" E.	108.4'
76- 101° 45' 55" E.	108.4'
77- 101° 45' 55" E.	108.4'
78- 101° 45' 55" E.	108.4'
79- 101° 45' 55" E.	108.4'
80- 101° 45' 55" E.	108.4'
81- 101° 45' 55" E.	108.4'
82- 101° 45' 55" E.	108.4'
83- 101° 45' 55" E.	108.4'
84- 101° 45' 55" E.	108.4'
85- 101° 45' 55" E.	108.4'
86- 101° 45' 55" E.	108.4'
87- 101° 45' 55" E.	108.4'
88- 101° 45' 55" E.	108.4'
89- 101° 45' 55" E.	108.4'
90- 101° 45' 55" E.	108.4'
91- 101° 45' 55" E.	108.4'
92- 101° 45' 55" E.	108.4'
93- 101° 45' 55" E.	108.4'
94- 101° 45' 55" E.	108.4'
95- 101° 45' 55" E.	108.4'
96- 101° 45' 55" E.	108.4'
97- 101° 45' 55" E.	108.4'
98- 101° 45' 55" E.	108.4'
99- 101° 45' 55" E.	108.4'
100- 101° 45' 55" E.	108.4'

(72)