

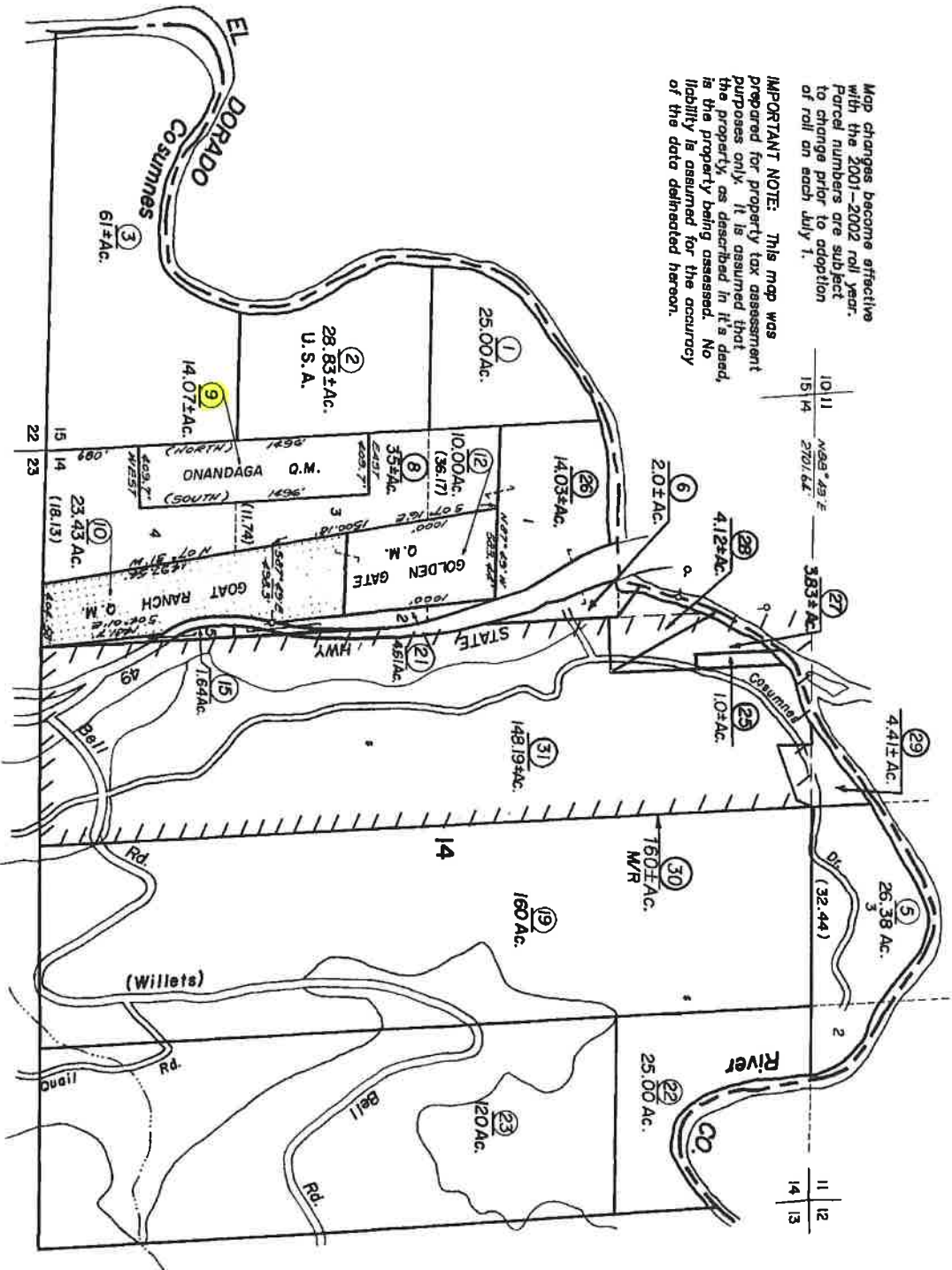
AMADOR COUNTY TAX COLLECTOR

**2020 TAX SALE PARCELS
(MARCH 18, 2020)**

ASSESSOR'S PARCEL MAPS

Map changes become effective with the 2001-2002 roll year. Parcel numbers are subject to change prior to adoption of roll on each July 1.

IMPORTANT NOTE: This map was prepared for property tax assessment purposes only. It is assumed that the property as described in it's deed, is the property being assessed. No liability is assumed for the accuracy of the data delineated hereon.



Unrec. Sur. 79
 Unrec. Sur. 1891
 Unrec. Sur. 2847
 R.M. Bk. 7, Pg. 87
 R.M. Bk. 31, Pg. 69 B.L.A.J.

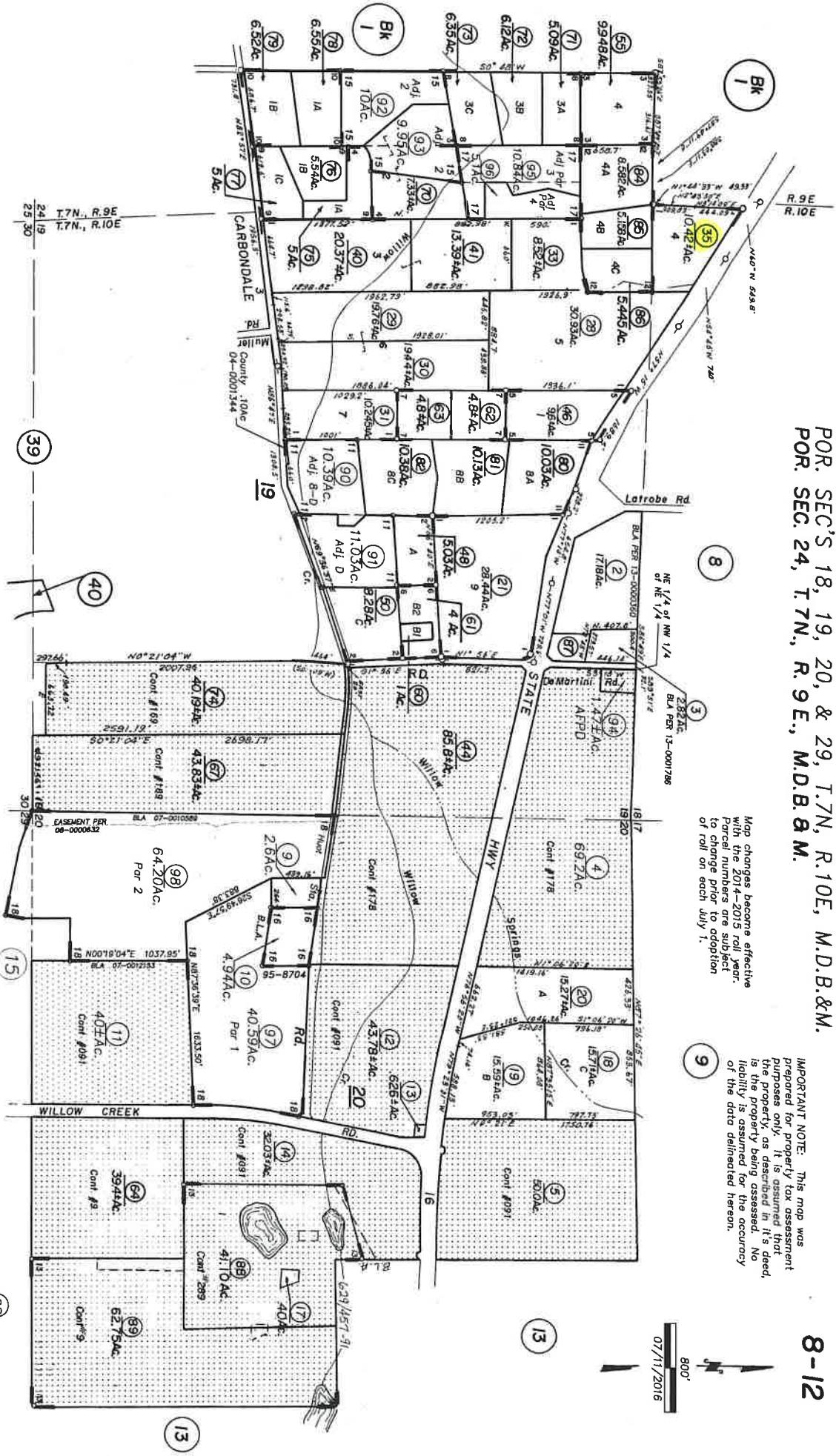
NOTE—Assessor's Block Numbers Shown in Ellipses.
 Assessor's Parcel Numbers Shown in Circles.

Assessor's Map Bk. 7, Pg. 01
 County of Amador, Calif.

POR. SEC'S 18, 19, 20, & 29, T.7N, R.10E, M.D.B.&M.
 POR. SEC. 24, T.7N, R.9E, M.D.B.&M.

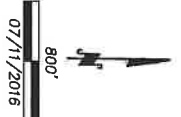
Map changes become effective with the 2014-2015 roll year. Parcel numbers are subject to change prior to adoption of roll on each July 1.

IMPORTANT NOTE: This map was prepared for property tax assessment purposes only. It is assumed that the property, as described in it's deed, is the property being assessed. No liability is assumed for the accuracy of the data delineated hereon.



- 1- R.M. Bk. 17, Pg. 2
- 2- R.M. Bk. 14, Pg. 8
- 3- R.M. Bk. 20, Pg. 1
- 4- R.M. Bk. 21, Pg. 55
- 5- R.M. Bk. 21, Pg. 88
- 6- R.M. Bk. 23, Pg. 8
- 7- R.M. Bk. 23, Pg. 30
- 8- R.M. Bk. 25, Pg. 41
- 9- R.M. Bk. 25, Pg. 63
- 10- R.M. Bk. 25, Pg. 88
- 11- R.M. Bk. 26, Pg. 73
- 12- R.M. Bk. 26, Pg. 31
- 13- R.M. Bk. 27, Pg. 17
- 14- R.M. Bk. 45, Pg. 362 (1/3/20)
- 15- R.M. Bk. 47, Pg. 24 (12/17/20)
- 16- R.M. Bk. 47, Pg. 62 (6/20/24)
- 17- R.M. Bk. 49, Pg. 44 (11/17/20)
- 18- R.M. Bk. 54, Pg. 80 (6/21/2002)
- 19- R.M. Bk. 60, Pg. 44 (1/29/2008)

Assessor's Map Bk. 8, Pg. 12
 County of Amador, Calif.



POR. RANCHO ARROYO SECO
POR. T.5N., R.10E., M.D.B. & M.

IMPORTANT NOTE: This map was prepared for property tax assessment purposes only. It is assumed that the property, as described in it's deed, is the property being assessed. No liability is assumed for the accuracy of the data delineated hereon.

Map changes become effective with the 2008-2009 roll year. Parcel numbers are subject to change prior to adoption of roll on each July 1.



Lot C
Common Area
(Includes all areas not specifically shown as numbered lots)

R.M.Bk.6, Sub.Pg.98 (1/22/93) The Oaks Mobile Home Community
-P.M.Bk.52, Pg.75 (9/10/1999)

NOTE-Assessor's Block Numbers Shown in Ellipses.
Assessor's Parcel Numbers Shown in Circles.

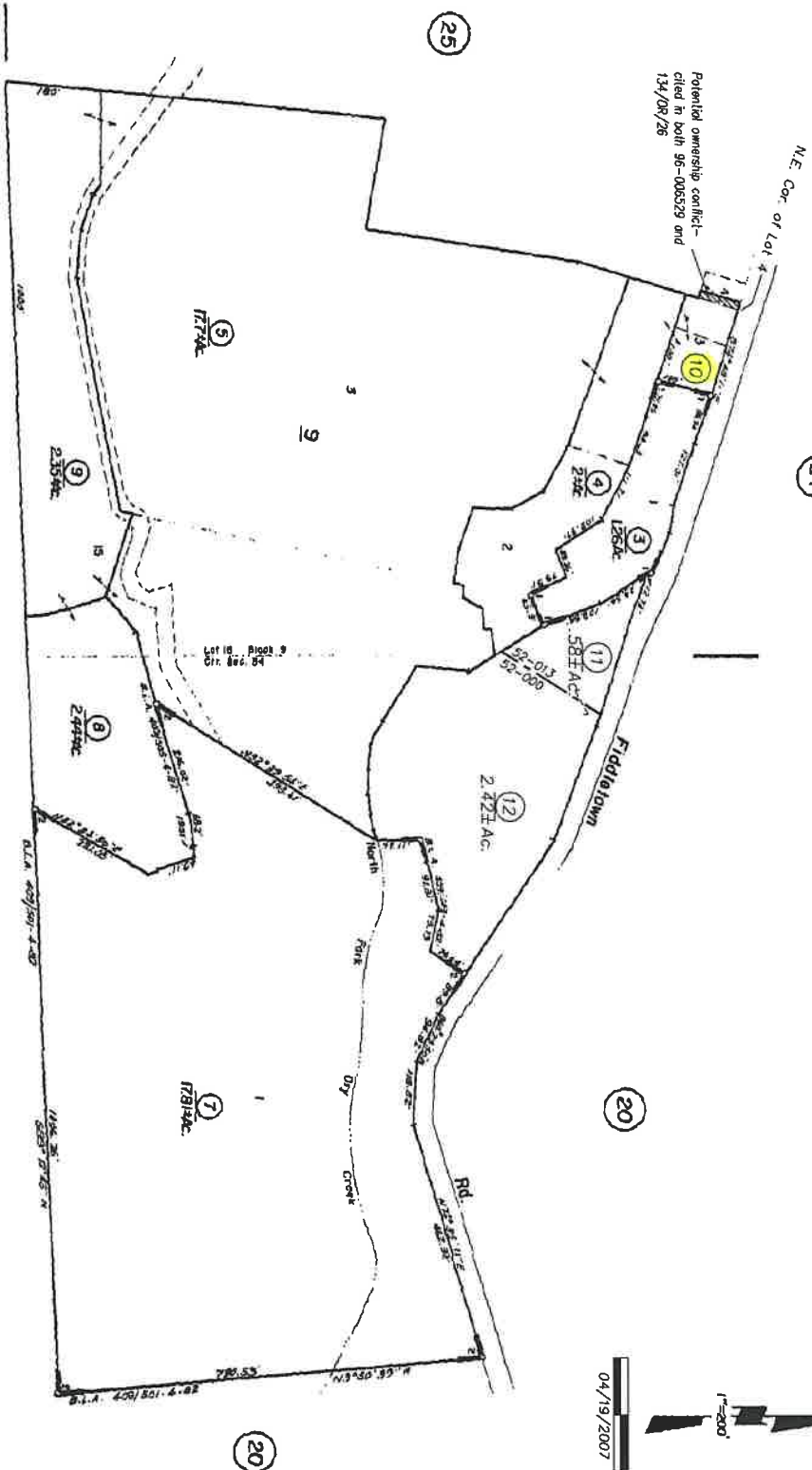
Assessor's Map Bk.12,Pg.33
County of Amador, Calif.



FOR SEC. 34, T. 8N, R. 11E, M.D.B. 8M.

Tax Area Code
52-000
52-013

14-30



IMPORTANT NOTE: This map was prepared for property tax assessment purposes only. It is assumed that the property, as described in it's deed, is the property being assessed. No liability is assumed for the accuracy of the data delineated hereon.

Map changes become effective with the 99-2000 roll year. Parcel numbers are subject to change prior to adoption of roll on each July 1.

Fiddletown Township
1- P.M. Bk. 29, Pg. 33
2- P.M. Bk. 36, Pg. 3

Assessor's Map Bk. 14, Pg. 30
County of Amador, Calif.

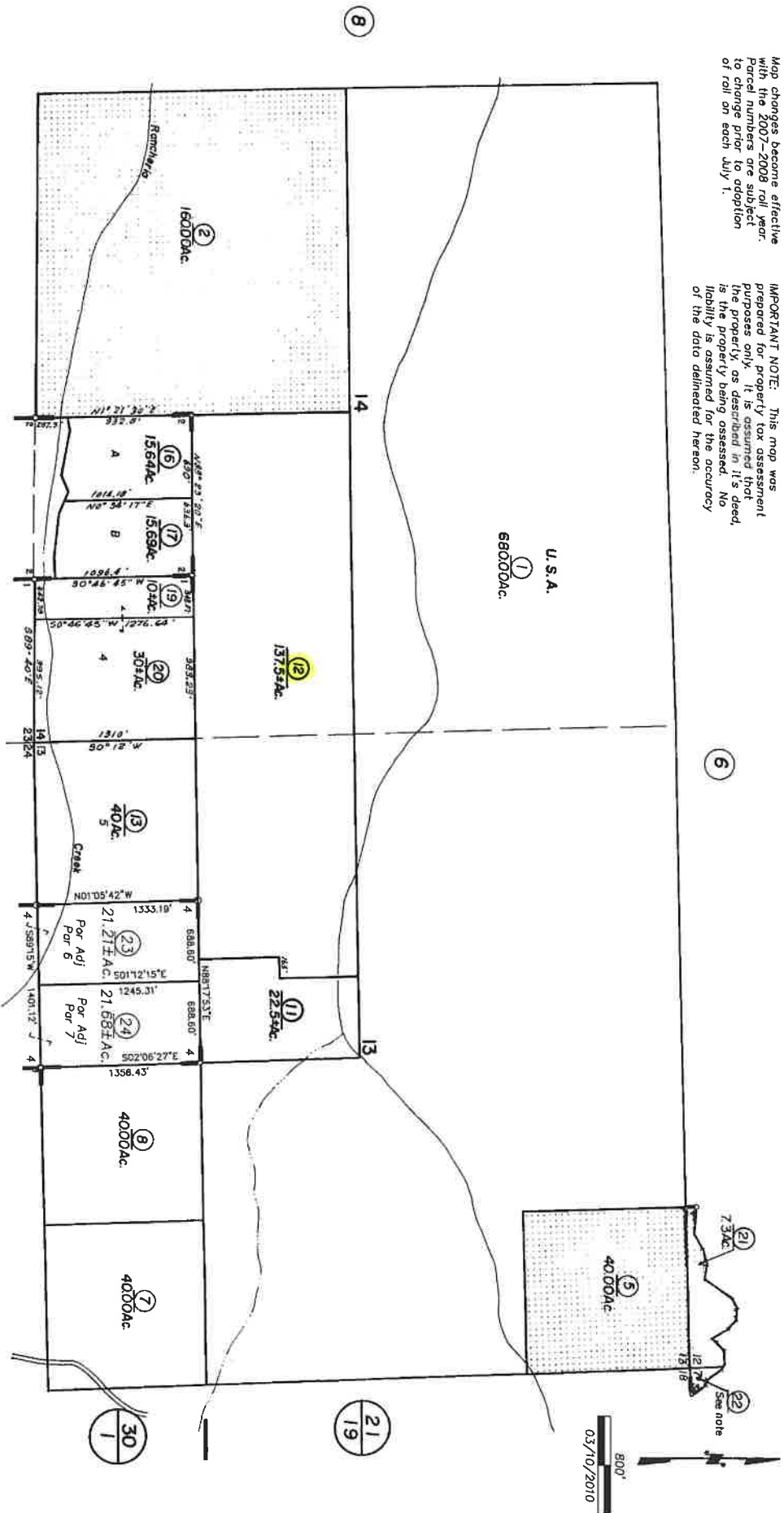
T. 7 N., R. 11 E., M. D. B. & M.

Tax Area Code

15-09

Map changes become effective with the 2007-2008 roll year. Parcel numbers are subject to change prior to adoption of roll on each July 1.

IMPORTANT NOTE: This map was prepared for property tax assessment purposes only. It is assumed that the property, as described in it's deed, is the property being assessed. No liability is assumed for the accuracy of the data delineated hereon.



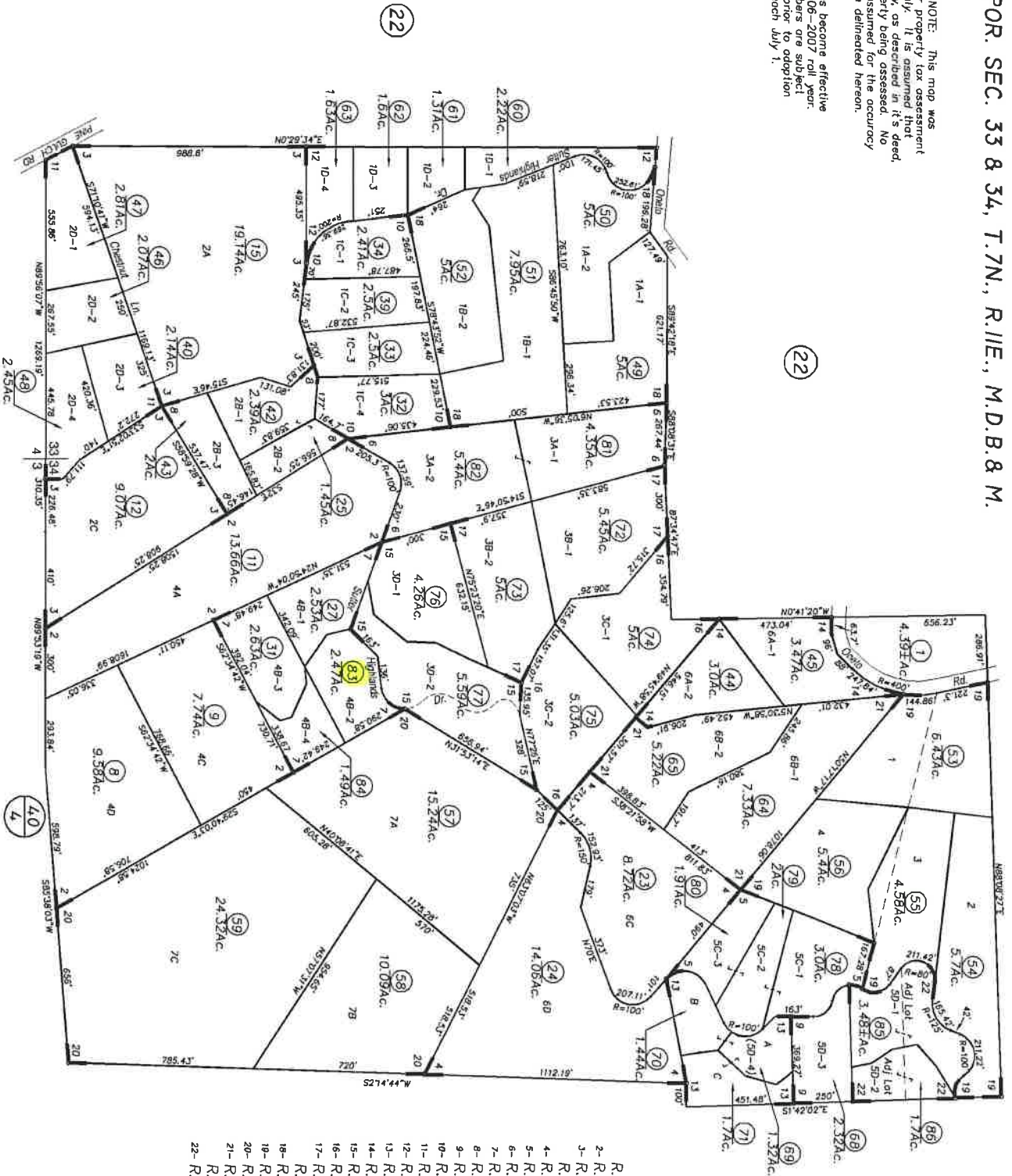
- 1- R.M. Bk. 13, Pg. 43
- 2- R.M. Bk. 20, Pg. 63
- 3- R.M. Bk. 43, Pg. 28 (12/28/83)
- 4- R.M. Bk. 59, Pg. 18 (09/08/09)

NOTE - Assessor's Block Numbers Shown in Ellipses. Assessor's Parcel Numbers Shown in Circles.

Assessor's Map Bk 15, Pg. 09
County of Amador, Calif.

IMPORTANT NOTE: This map was prepared for Property Tax assessment purposes only. It is assumed that the property as described in it's deed is the property being assessed. No liability is assumed for the accuracy of the data delineated herein.

Map changes become effective with the 2006-2007 roll year. Parcel numbers are subject to change prior to adoption of roll on each July 1.



- R.M. Bk.15, Pg.98 Silver Highlands Unit No. 1
- 2- R.M. Bk.17, Pg.04
- 3- R.M. Bk.17, Pg.05
- 4- R.M. Bk.17, Pg.06
- 5- R.M. Bk.17, Pg.08
- 6- R.M. Bk.18, Pg.100
- 7- R.M. Bk.20, Pg.44
- 8- R.M. Bk.18, Pg.13
- 9- R.M. Bk.18, Pg.16
- 10- R.M. Bk.18, Pg.18
- 11- R.M. Bk.18, Pg.70
- 12- R.M. Bk.19, Pg.50
- 13- R.M. Bk.19, Pg.58
- 14- R.M. Bk.19, Pg.62
- 15- R.M. Bk.20, Pg.15
- 16- R.M. Bk.20, Pg.16
- 17- R.M. Bk.20, Pg.17
- 18- R.M. Bk.20, Pg.38
- 19- R.M. Bk.21, Pg.54
- 20- R.M. Bk.21, Pg.75
- 21- R.M. Bk.23, Pg.40
- 22- R.M. Bk.23, Pg.75
- R.M. Bk.17, Pg.50
- R.M. Bk.57, Pg.98 (07/06/05)

Assessor's Map Bk. 15, Pg. 33
County of Amador, Calif.



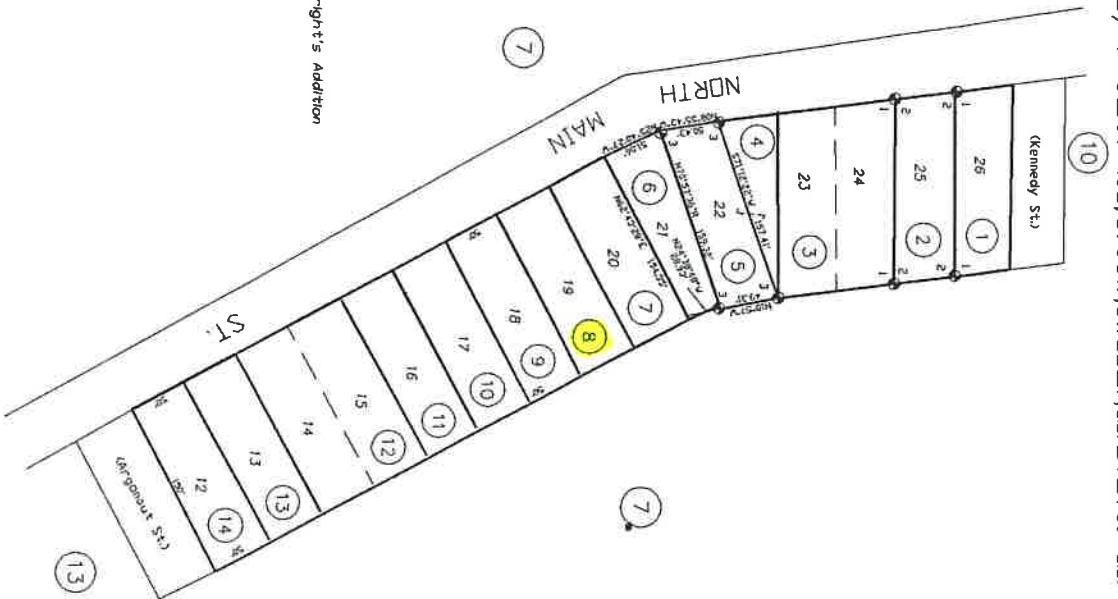
(86)

POR. SW1/4 SEC. 21, T. 6N., R. 11E., M. D. B. & M.

Tax Area Code
2-000

20-11

NOTE: This Map Was Prepared For Assessment Purposes Only. No Liability Is Assumed for the Accuracy of the Data Detached Hereon.



R.M. Bk. 1, Pg. 2 - Bright's Addition
 1-R.M. Bk. 4, Pg. 9 - Revised Plat of Fraction of Bright's Addition
 2-R.M. Bk. 15, Pg. 65
 3-R.M. Bk. 47, Pg. 19

NOTE - Assessor's Block Numbers Shown in Ellipses.
 Assessor's Parcel Numbers Shown in Circles.

Assessor's Map Bk. 20, Pg. 11
 County of Amador, Calif.

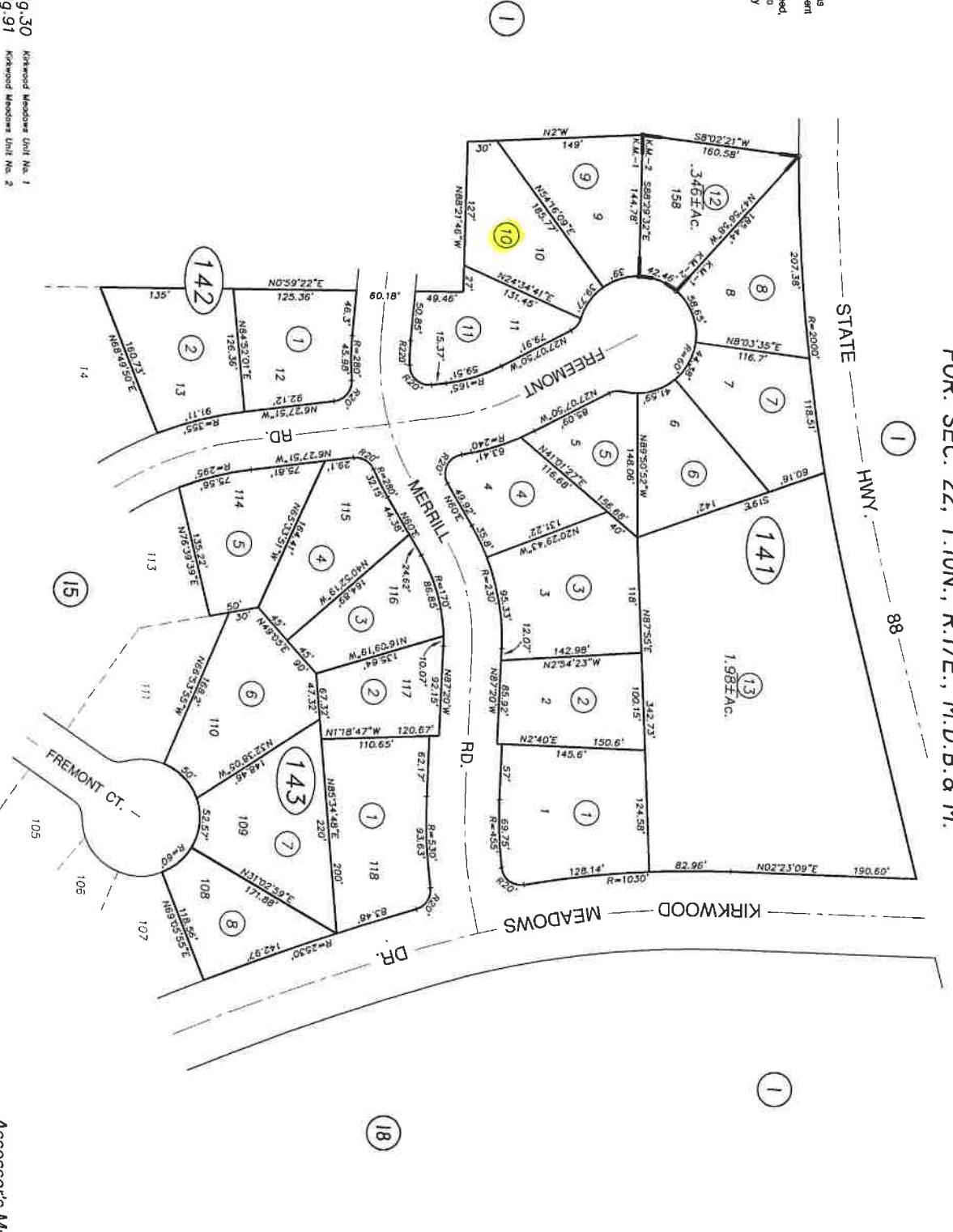
1"=100'

Map changes become effective with the 2009-2010 roll year. Parcel numbers are subject to change prior to adoption of roll on each July 1.

IMPORTANT NOTE: This map was prepared for property tax assessment purposes only. It is assumed that the property, as described in its deed, is the property being assessed. No liability is assumed for the accuracy of the data delineated hereon.

FOR SEC. 22, T.10N., R.17E., M.D.B. 8 M.

26-14
FROM: 26-01



NOTE - Assessor's Block Numbers Shown in Ellipses, Assessor's Parcel Numbers Shown in Circles.

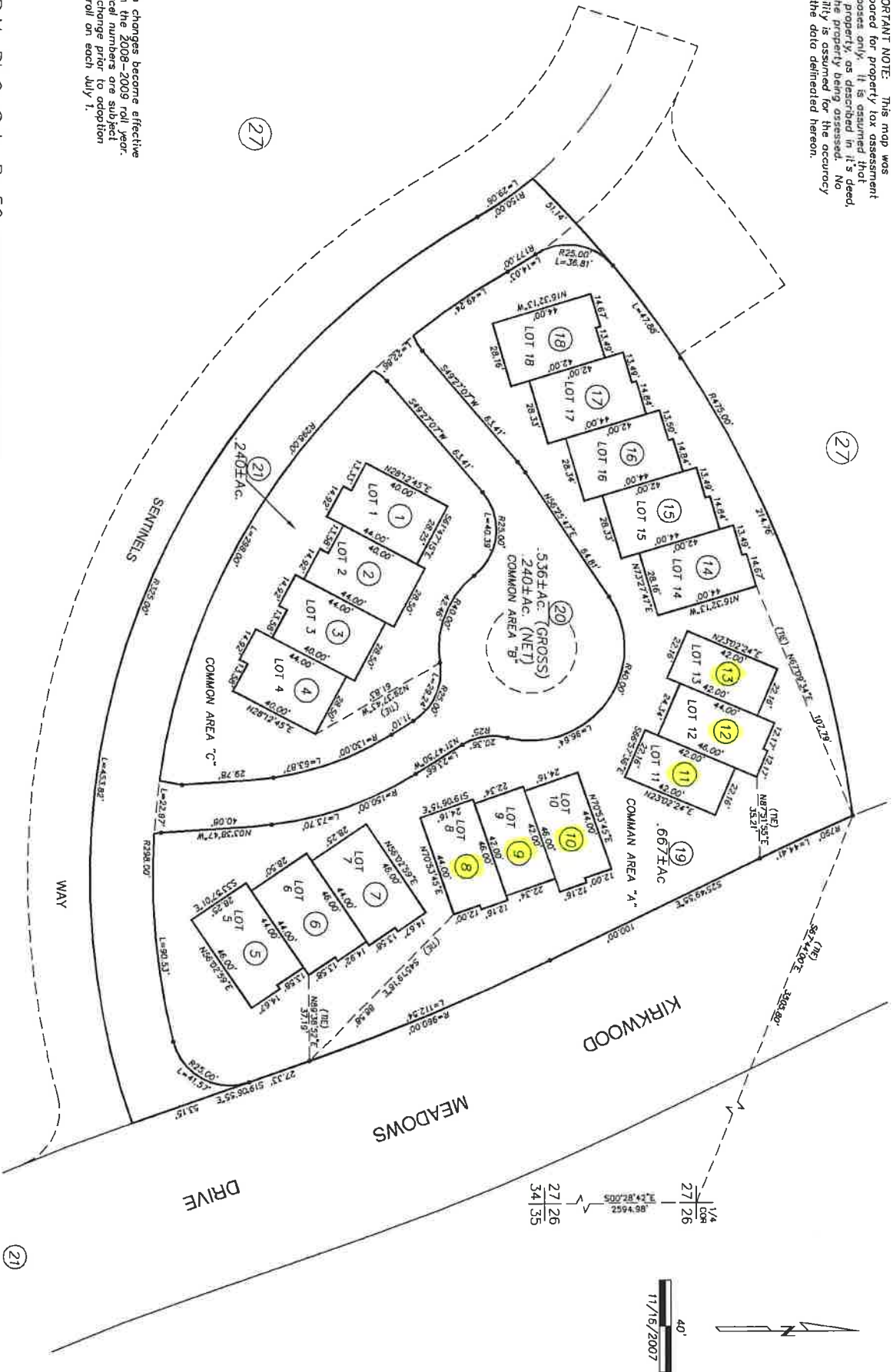
Assessor's Map Bk. 26, Pg. 14
County of Amador, Calif.

R.M. Bk.03, Sub. Pg.30
R.M. Bk.03, Sub. Pg.91
Kirkwood Meadows Unit No. 1
Kirkwood Meadows Unit No. 2

IMPORTANT NOTE: This map was prepared for property tax assessment purposes only. It is assumed that the property, as described in it, is the property being assessed. No liability is assumed for the accuracy of the data delineated hereon.

POR. SEC. 27, T.10N., R.17E., M.D.B. & M.

26-30



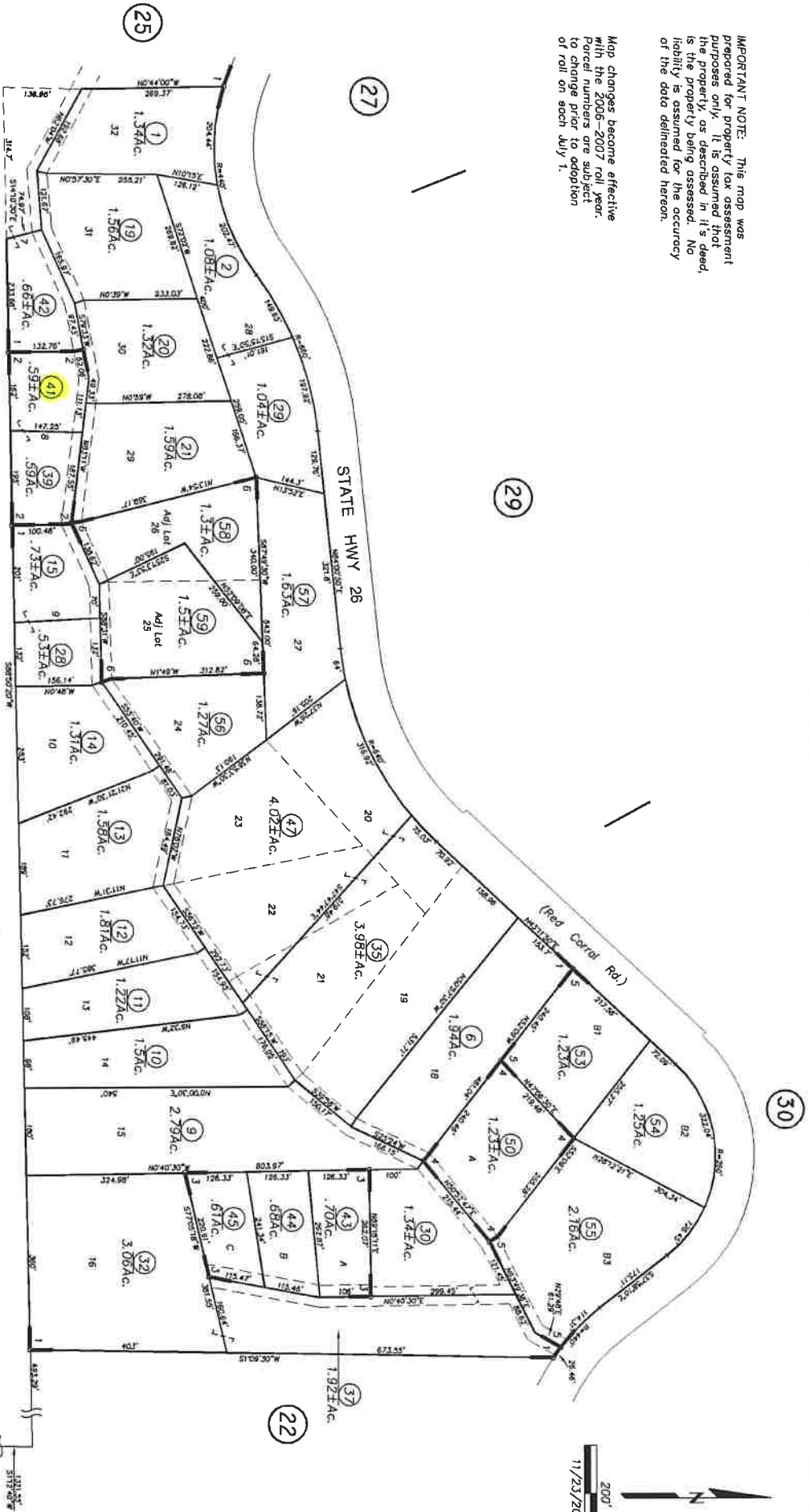
Map changes become effective with the 2008-2009 roll year. Parcel numbers are subject to change each July 1.

R.M. Bk. 9, Sub. Pg. 50 (11/8/2007) SENTINELS WEST AT KIRKWOOD

Assessor's Map Bk. 26, Pg. 30
County of Amador, Calif.

IMPORTANT NOTE: This map was prepared for property tax assessment purposes only. It is assumed that the property, as described in it's deed, is the property being assessed. No liability is assumed for the accuracy of the data delineated hereon.

Map changes became effective with the 2006-2007 roll year. Parcel numbers are subject to change prior to adoption of roll on each July 1.



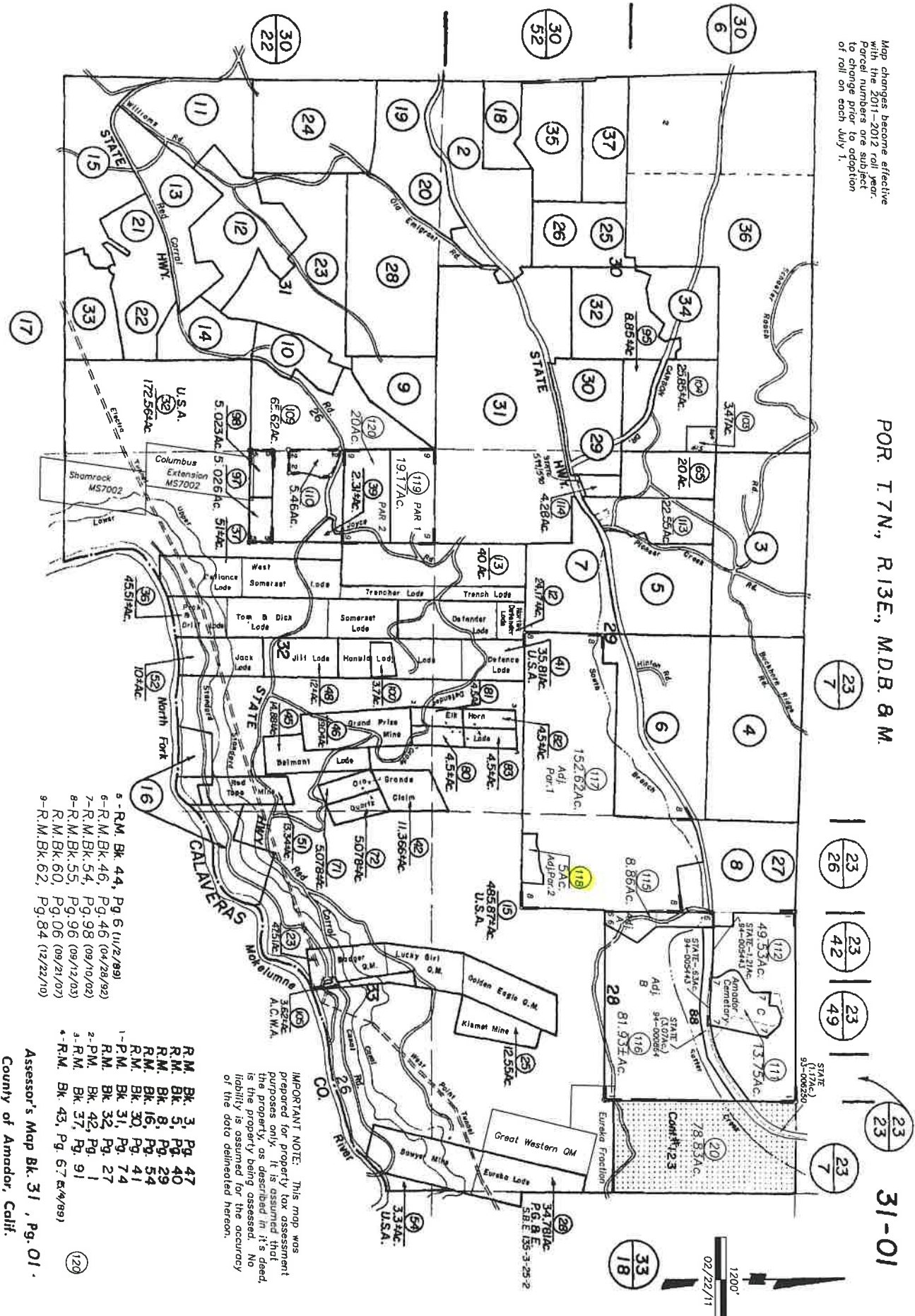
- 1- R.M. Bk.05, Pg.66
- 2- P.M. Bk.20, Pg.55
- 3- P.M. Bk.20, Pg.72
- 4- P.M. Bk.27, Pg.61
- 5- P.M. Bk.34, Pg.04
- 6- R.M. Bk.57, Pg.69 (adj. to 30)

Assessor's Map Bk. 30, Pg. 26
County of Amador, Calif.

Map changes become effective with the 2011-2012 roll year. Parcel numbers are subject to change prior to adoption of roll on each July 1.

POR. T7N, R13E, MDB. 8M.

31-01

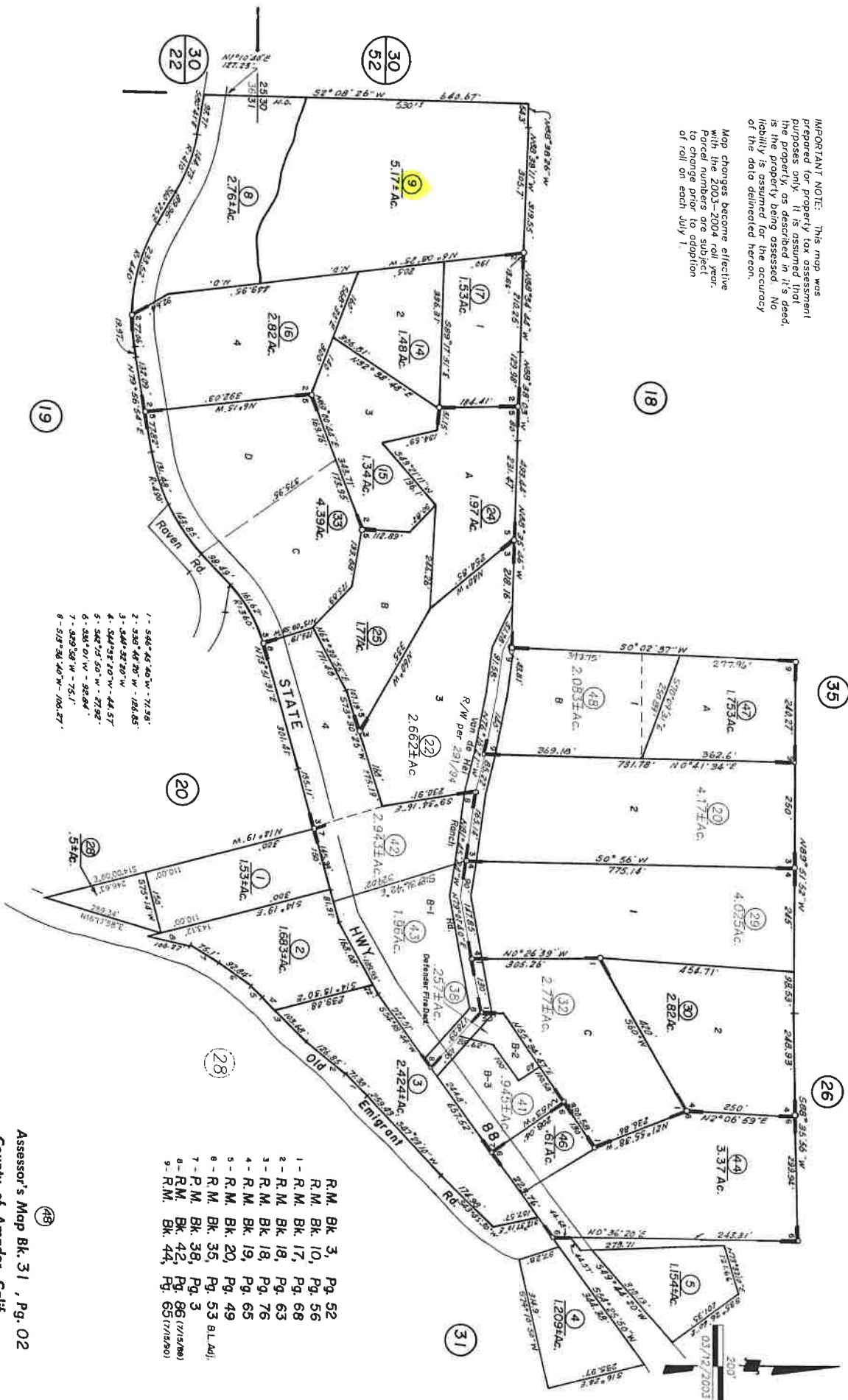


IMPORTANT NOTE: This map was prepared for property tax assessment purposes only. It is assumed that the property, as described in it's deed, is the property being assessed. No liability is assumed for the accuracy of the data delineated hereon.

- R.M. Bk. 5, Pg. 47
 - R.M. Bk. 8, Pg. 29
 - R.M. Bk. 16, Pg. 34
 - R.M. Bk. 30, Pg. 41
 - 1-P.M. Bk. 31, Pg. 74
 - R.M. Bk. 32, Pg. 27
 - 2-P.M. Bk. 42, Pg. 1
 - 3-R.M. Bk. 37, Pg. 91
 - 4-R.M. Bk. 43, Pg. 67 (4/89)
- Assessor's Map Bk. 31 , Pg. 01 .
County of Amador, Calif.

IMPORTANT NOTE: This map was prepared for property tax assessment purposes only. It is assumed that the property, as described in it's deed, is the property being assessed. No liability is assumed for the accuracy of the data delineated hereon.

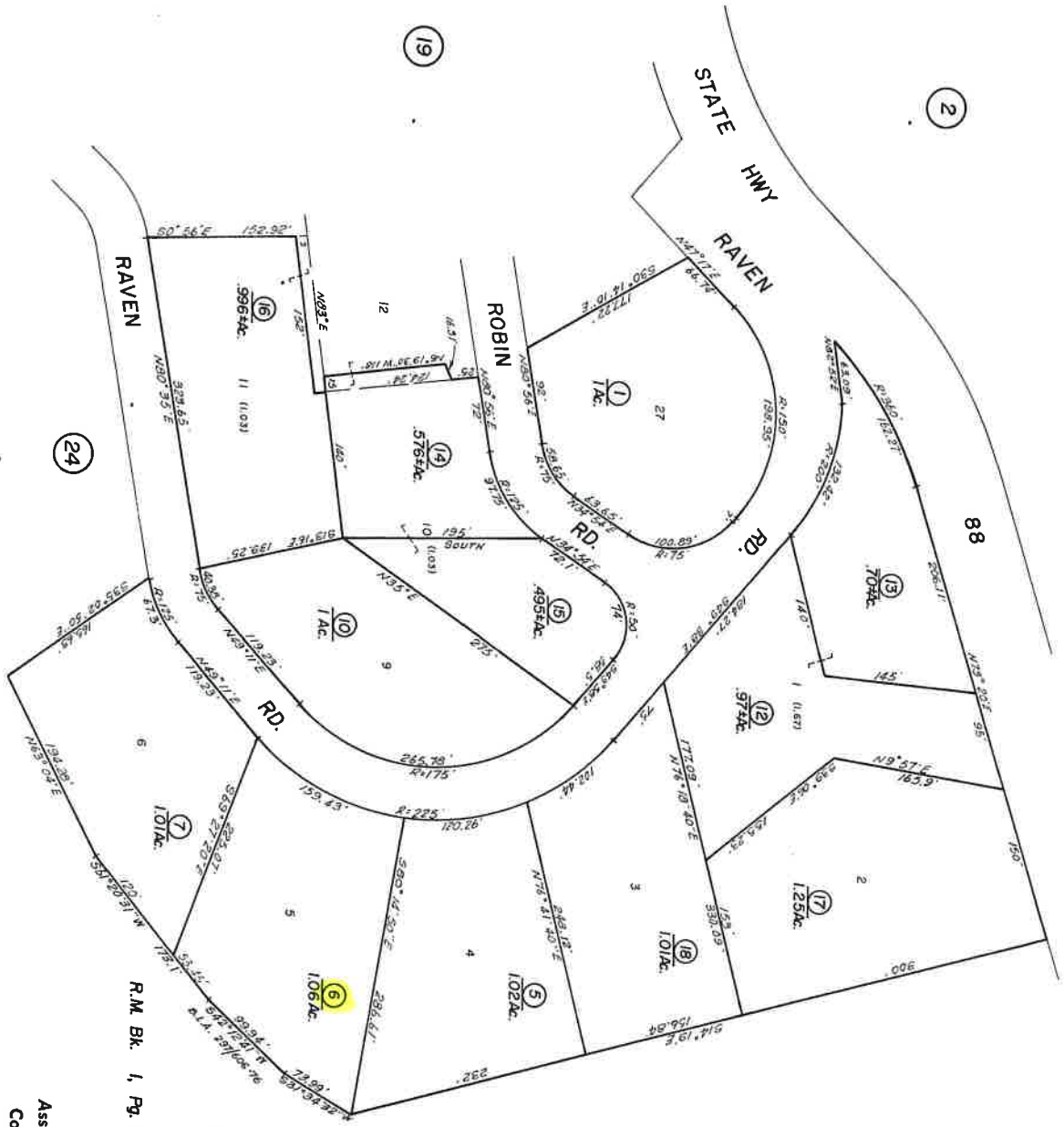
Map changes become effective with the 2003-2004 roll, year. Parcel numbers are subject to change due to the adoption of roll on each July 1.



Assessor's Map Bk. 31, Pg. 02
 County of Amador, Calif.

POR SEC'S 30 & 31, T. 7N., R. 13E., M.D.B. & M.

31-20



R.M. Bk. 1, Pg. 45 Manns Haven Unit No. 1

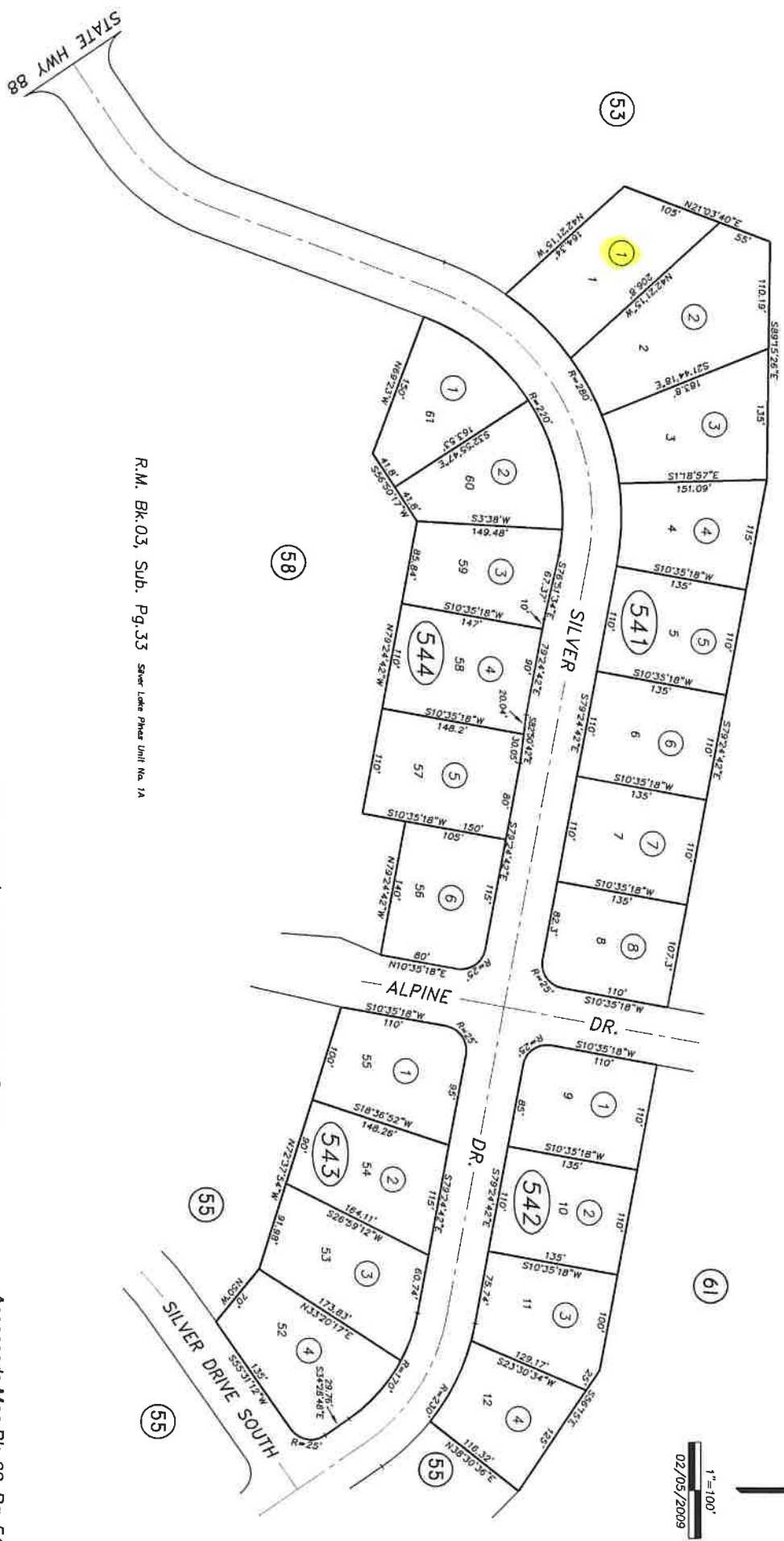
Assessor's Map Bk. 31, Pg. 20
County of Amador, Calif.

IMPORTANT NOTE: This map was prepared for property tax assessment purposes only. It is assumed that the property, as described in its deed, is the property being assessed. No liability is assumed for the accuracy of the data delineated herein.

POR. SEC'S 15 & 22, T. 7N., R. 13E., M.D.B. & M.

TAX AREA CODE
52-009

33-54



R.M. Bk. 03, Sub. Pg. 33 Silver Lake Phase Unit No. 1A

NOTE--Assessor's Block Numbers Shown in Ellipses.
Assessor's Parcel Numbers Shown in Circles.

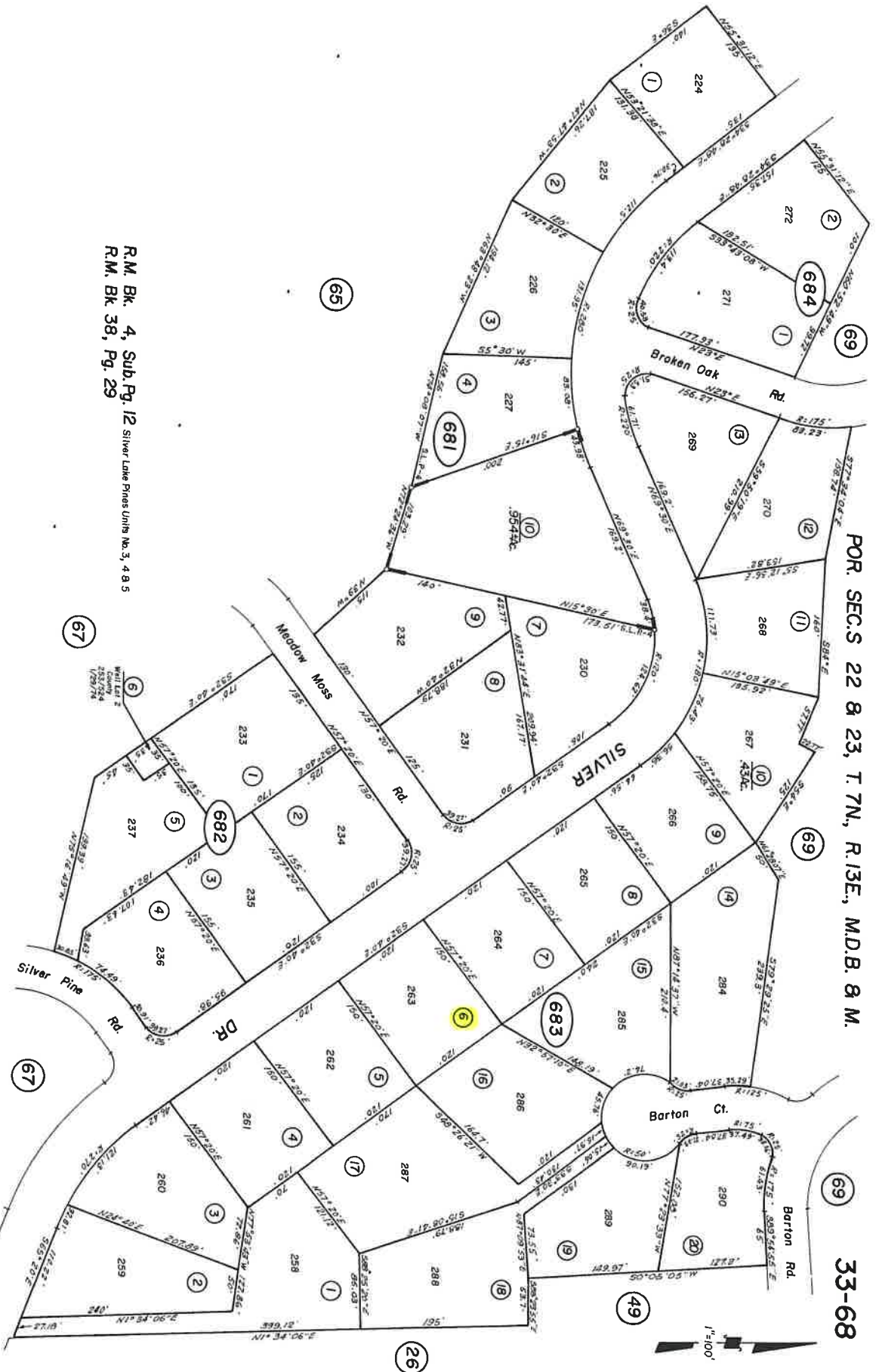
Assessor's Map Bk. 33, Pg. 54
County of Amador, Calif.



1"=100'
02/05/2009

POR. SEC.S 22 & 23, T. 7N., R. 13E., M.D.B. & M.

33-68



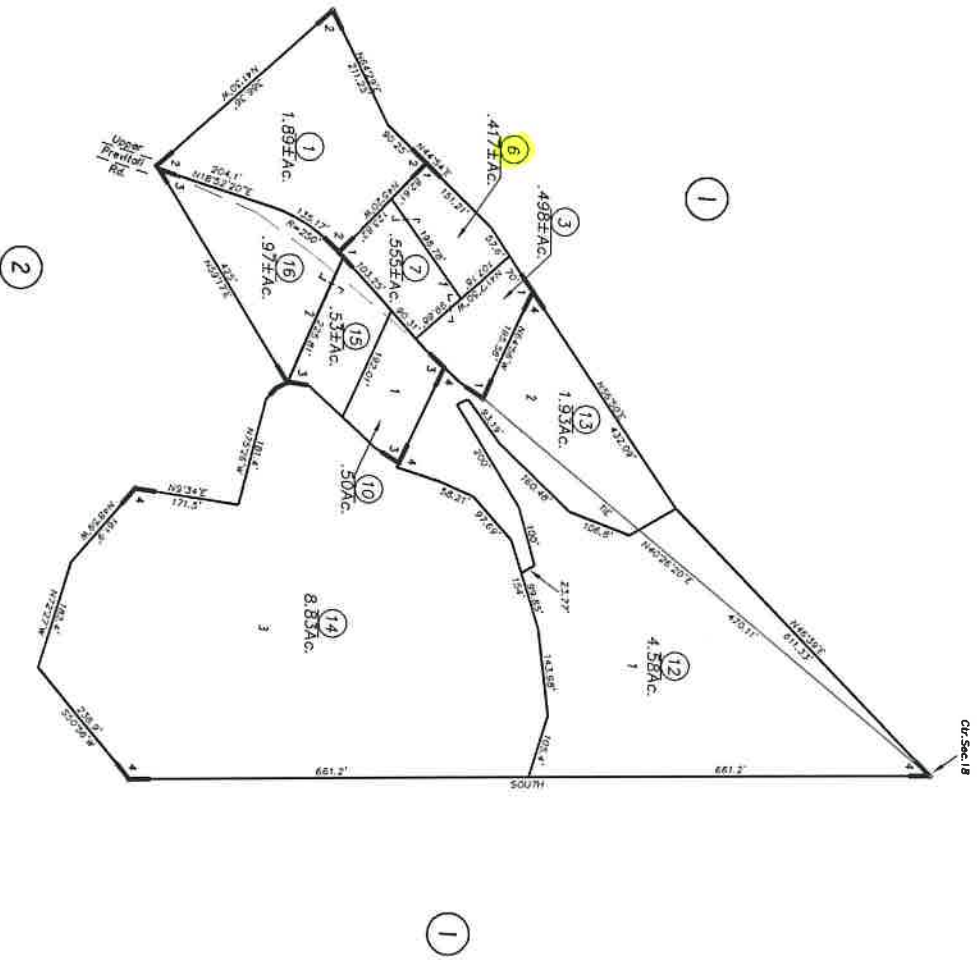
R.M. Bk. 4, Sub Pg. 12 Silver Lane Pines Units No. 3, 4 & 5
R.M. Bk 38, Pg. 29

NOTE—Assessor's Block Numbers Shown in Ellipses.
Assessor's Parcel Numbers Shown in Circles.
Assessor's Map Bk. 33, Pg. 68
County of Amador, Calif.

1/188 Roll 84-40
(7) room 33/69

POR. SEC. 18, T. 6N, R. 12E, M.D.B. & M.

36-03
FROM: 36--01



- 1- R.M. Bk.03, Pg.32
- 2- R.M. Bk.05, Pg.19
- 3- R.M. Bk.21, Pg.74
- 4- R.M. Bk.24, Pg.47

IMPORTANT NOTE: This map was prepared for property tax assessment purposes only. It is assumed that the property, as described in its deed, is the property being assessed. No liability is assumed for the accuracy of the data delineated hereon.

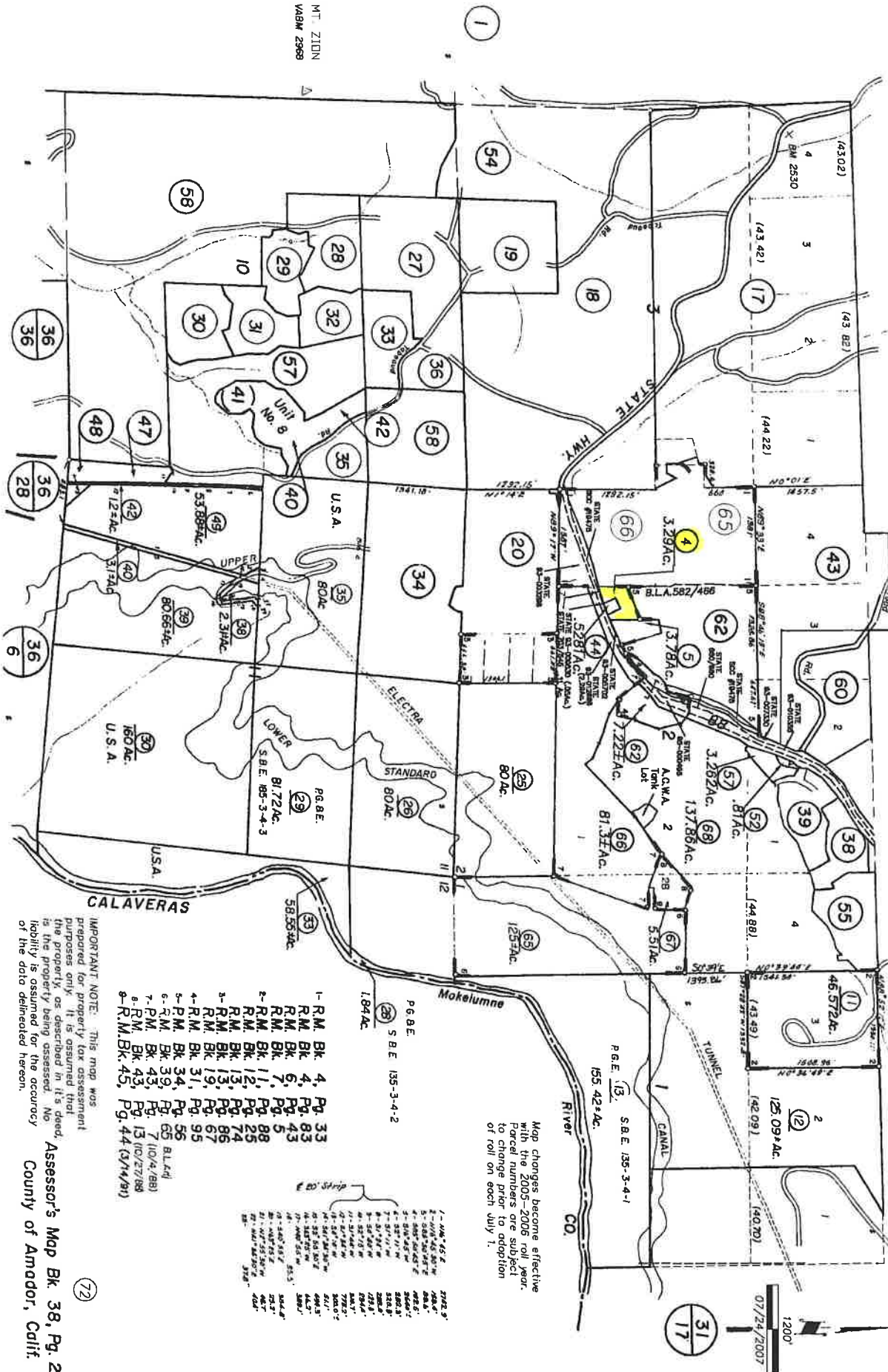
NOTE-Assessor's Block Numbers Shown in Ellipses.
Assessor's Parcel Numbers Shown in Circles.

Assessor's Map Bk. 36, Pg. 03
County of Amador, Calif.

16

T. 6 N., R. 12 E.

38-21



MT. ZION
V. 2008

- 1- R.M. Bk. 4, Pg. 33
- 2- R.M. Bk. 4, Pg. 83
- 3- R.M. Bk. 5, Pg. 43
- 4- R.M. Bk. 7, Pg. 5
- 5- R.M. Bk. 11, Pg. 88
- 6- R.M. Bk. 12, Pg. 23
- 7- R.M. Bk. 13, Pg. 74
- 8- R.M. Bk. 19, Pg. 67
- 9- R.M. Bk. 31, Pg. 95
- 10- R.M. Bk. 34, Pg. 55
- 11- R.M. Bk. 39, Pg. 63
- 12- R.M. Bk. 43, Pg. 7
- 13- R.M. Bk. 43, Pg. 13
- 14- R.M. Bk. 45, Pg. 44

Map changes become effective
in 2005-2006 unless
Parcel owners are subject
to change prior to adoption
of roll on each July 1.

1200'
07/24/2007

IMPORTANT NOTE: This map was prepared for property tax assessment purposes only. It is assumed that the property, as described in this map, is the property being assessed. No liability is assumed for the accuracy of the data delineated hereon.

Assessor's Map Bk. 38, Pg. 21
County of Amador, Calif.

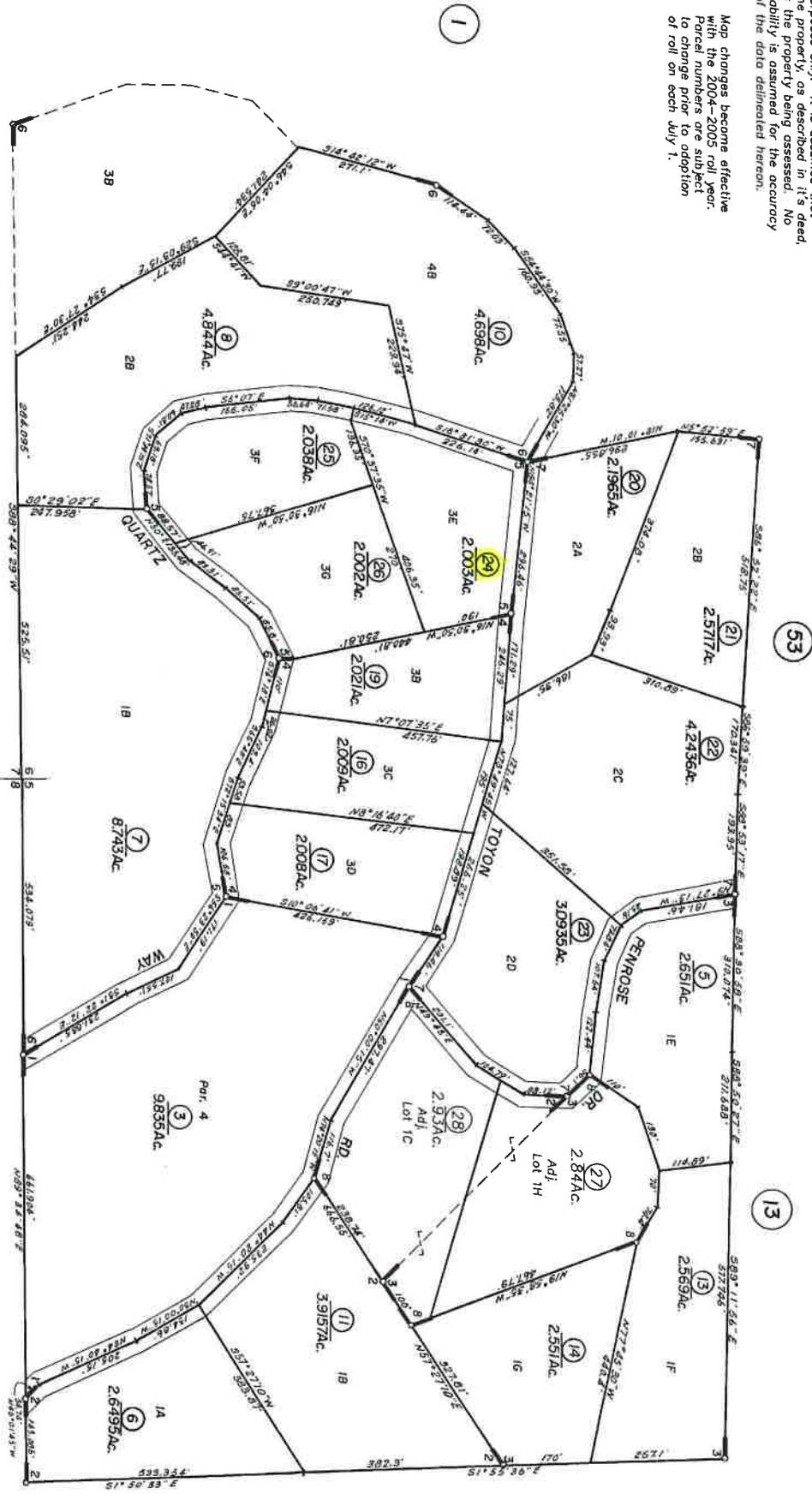
(72)

IMPORTANT NOTE: This map was prepared for property tax assessment purposes only. It is assumed that the property, as described in it's deed, is the property being assessed. No liability is assumed for the accuracy of the data delineated hereon.

Map changes become effective with the 2004-2005 roll year. Parcel numbers are subject to change prior to adoption of roll on each July 1.

POR. SW 1/4, SEC. 5, POR. SE 1/4, SEC. 6, T.6N., R.12E., M.D.B&M.

38-45



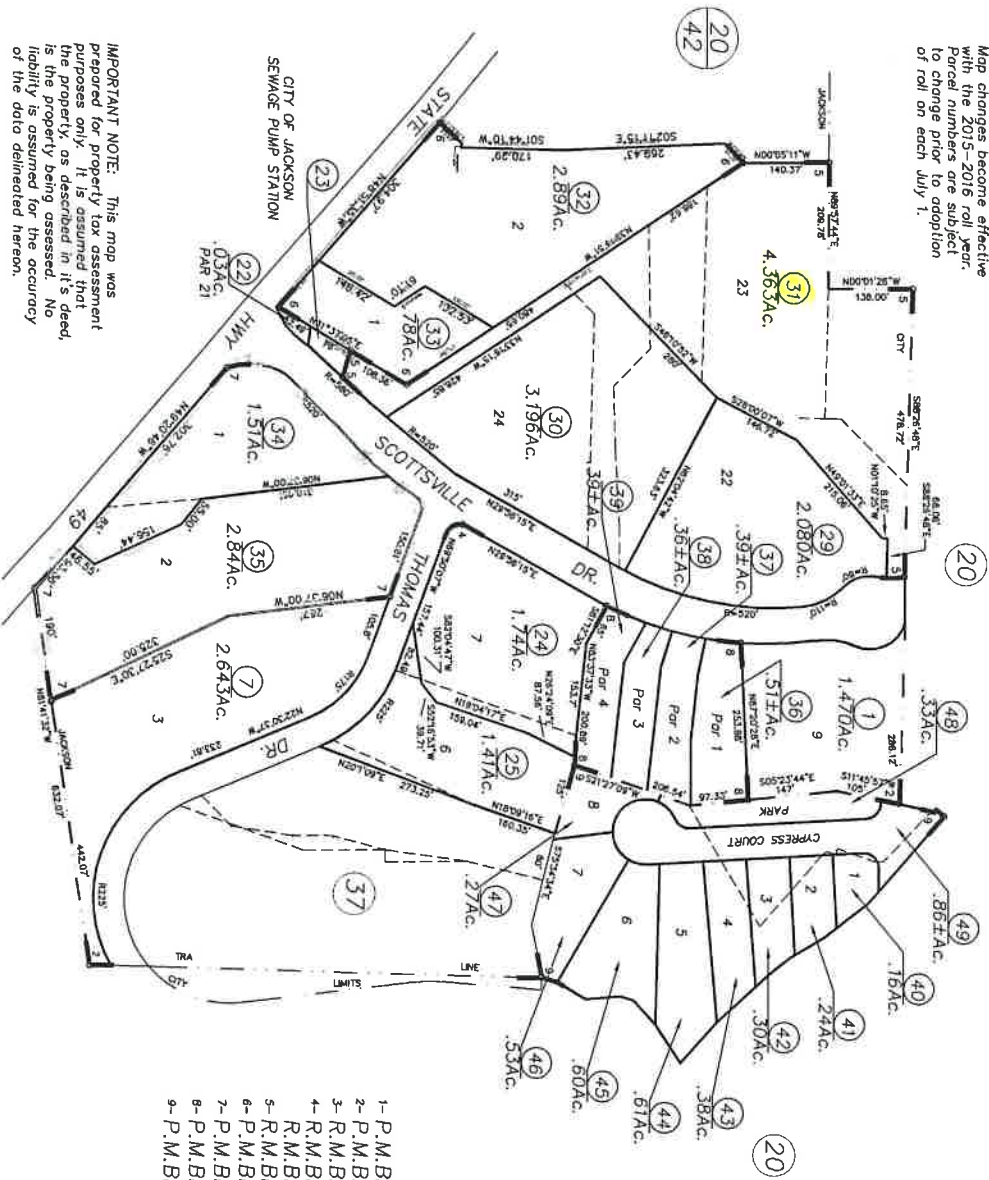
- 1 - R.M. Bk. 14, Pg. 51
- 2 - R.M. Bk. 14, Pg. 87
- 3 - R.M. Bk. 15, Pg. 5
- 4 - R.M. Bk. 15, Pg. 6
- 5 - R.M. Bk. 15, Pg. 13
- 6 - R.M. Bk. 15, Pg. 16
- 7 - R.M. Bk. 14, Pg. 69
- 8 - R.M. Bk. 55, Pg. 4 (10/3/2002)

NOTE—Assessor's Block Numbers Shown in Ellipses.
Assessor's Parcel Numbers Shown in Circles.

Assessor's Map Bk. 38, Pg. 45
County of Amador, Calif.

(29)

Map changes become effective with the 2015-2016 roll year. Parcel numbers are subject to change prior to adoption of roll on each July 1.



- 1- P.M.Bk.30, Pg.34
- 2- P.M.Bk.41, Pg.37 JACKSON BUSINESS CENTER
- 3- R.M.Bk.43, Pg.22 JACKSON BUSINESS CENTER (12/9/88)
- 4- R.M.Bk.43, Pg.65
- 5- R.M.Bk.43, Pg.66
- 6- R.M.Bk.45, Pg.43 (3/7/91)
- 7- P.M.Bk.53, Pg.7 (2/18/2000)
- 8- P.M.Bk.56, Pg.16 (1/17/2003)
- 9- P.M.Bk.61, Pg.13 (11/03/2008)
- 9- P.M.Bk.09 SUB, Pg.67 (07/11/2014)

IMPORTANT NOTE: This map was prepared for property tax assessment purposes only. It is assumed that the property, as described in it's deed, is the property being assessed. No liability is assumed for the accuracy of the data delineated hereon.

