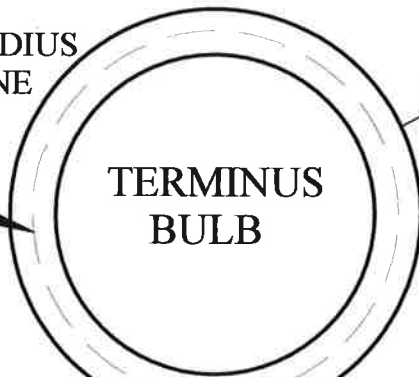


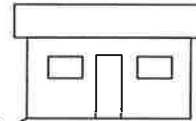
FIRE SAFE DRIVEWAY REGULATIONS

PER 15.30., AMADOR COUNTY

MINIMUM INSIDE RADIUS OF 40' TO CENTER LINE OF TERMINUS BULB

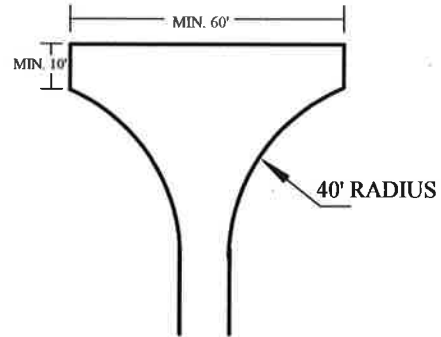


TERMINUS BULB



TURN AROUND WITHIN 50' OF STRUCTURE

MAXIMUM OF 50'



OPTIONAL: HAMMER HEAD TURN AROUND

MINIMUM RADIUS OF 50' FOR ALL TURNS EXCEPT AS ABOVE

NO OBSTRUCTIONS THROUGHOUT DRIVEWAY 14' IN WIDTH, 15' IN HEIGHT

300'

TURN AROUNDS REQUIRED WHEN 300' OFF ROADWAY

12' WIDE; 30' LONG WITH 25' TAPERS EACH END

TURNOUT MIDWAY WHEN STRUCTURE IS 150' OR GREATER FROM ROADWAY. MAXIMUM OF 400' BETWEEN TURNOUTS.

MAXIMUM SLOPE OF DRIVEWAY IS 16%

DRIVEWAY; MINIMUM 10' WIDE WITH A 1' SHOULDER ON EACH SIDE (12' TOTAL), ALL WEATHER SURFACE CAPABLE OF HANDLING 40,000 POUNDS. MINIMUM OF 3" OF CLASS II ROAD BASE COMPACTED TO 90%

GATE TO BE A MINIMUM OF 30' OFF ROADWAY AND MIN. 14' WIDE. REQUIRES KNOX BOX APPROVED BY LOCAL FIRE JURISDICTION

ENCROACHMENT; PERMIT REQUIRED THROUGH PUBLIC WORKS

HOUSE NUMBERS VISIBLE FOR A MINIMUM OF 100', CONTRASTING COLORS, 4" HIGH WITH 1/2" STROKES

2019

BLUE SPHERE VISIBLE AFTER ADDRESS TO IDENTIFY APPROVED 2500 GAL. WATER TANK (OR EQUIVALENT) FOR FIRE SUPPRESSION

COUNTY OR PRIVATE ROAD