

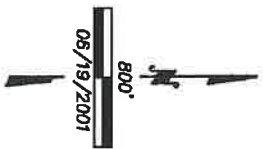
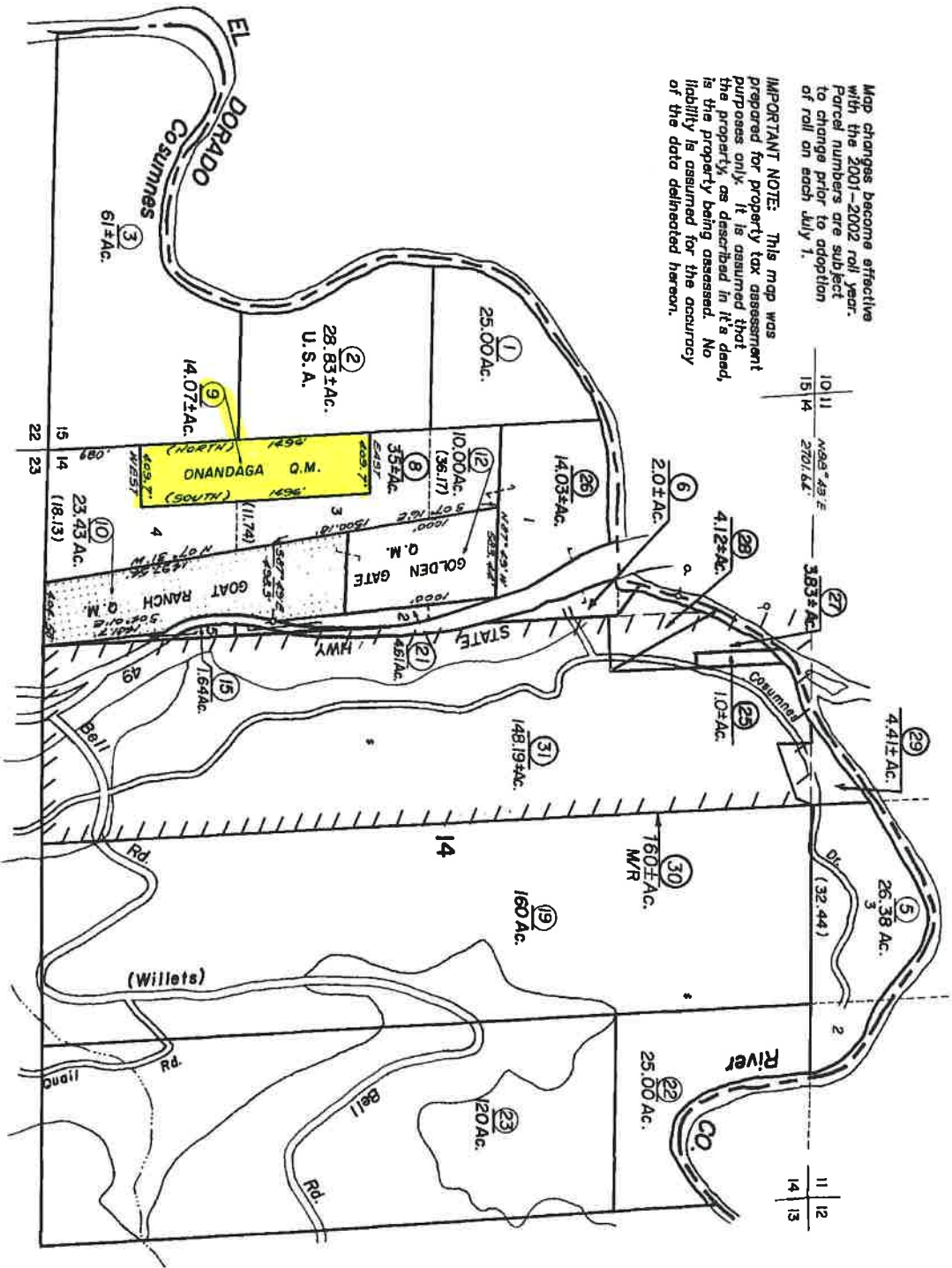
AMADOR COUNTY TAX COLLECTOR

**2021 TAX SALE PARCELS
(MARCH 15-17, 2021)**

ASSESSOR'S PARCEL MAPS

Map changes become effective with the 2001-2002 roll year. Parcel numbers are subject to change prior to adoption of roll on each July 1.

IMPORTANT NOTE: This map was prepared for property tax assessment purposes only. It is assumed that the property as described in it's deed, is the property being assessed. No liability is assumed for the accuracy of the data delineated hereon.



Unrec. Sur. 79

Unrec. Sur. 1891

Unrec. Sur. 2847

R.M. Bk. 7, Pg. 87

R.M. Bk. 31, Pg. 69 B.L.A.J.

(3)

(4)

(31)

(2)

NOTE—Assessor's Block Numbers Shown in Ellipses.

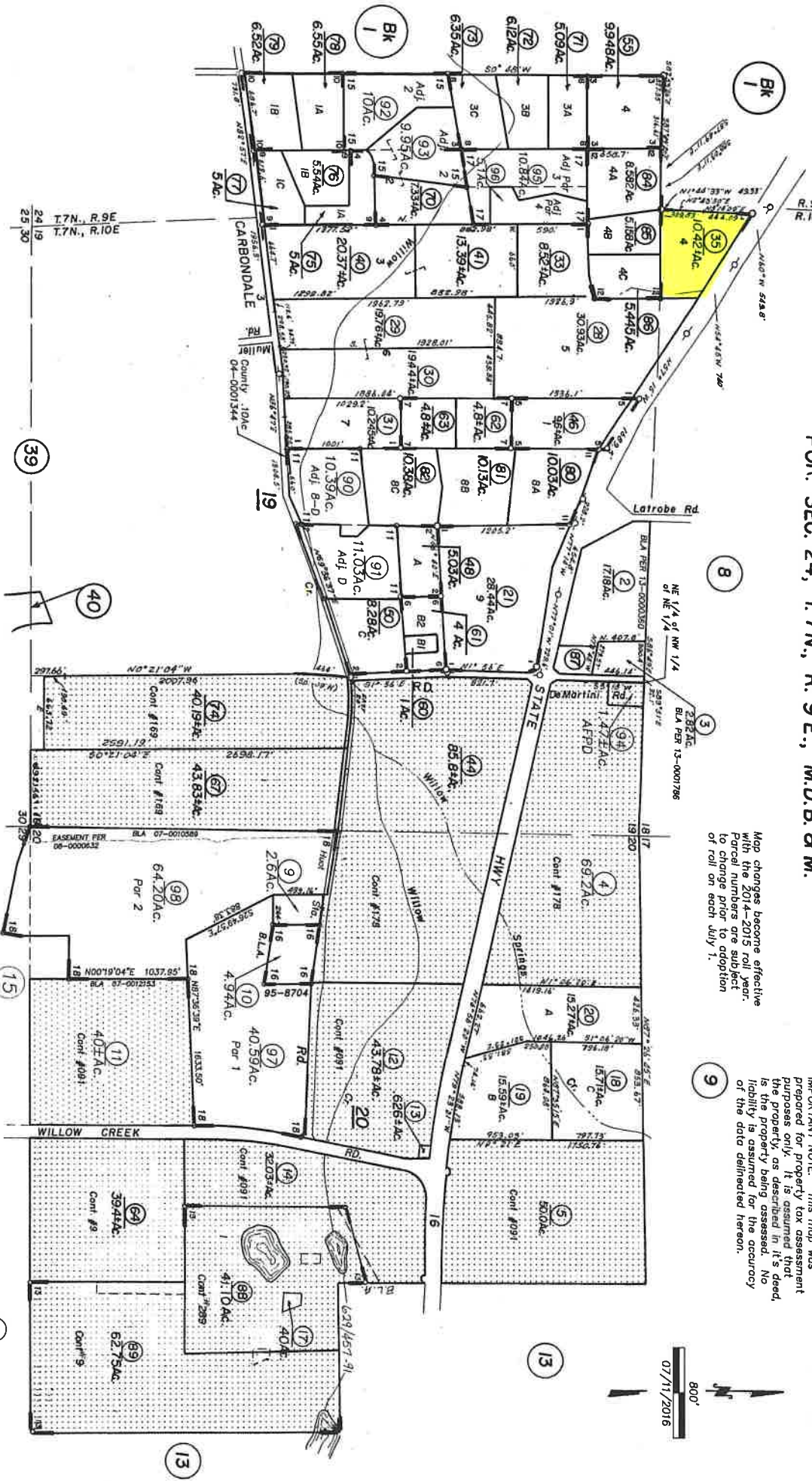
Assessor's Parcel Numbers Shown in Circles.

Assessor's Map Bk. 7, Pg. 01
County of Amador, Calif.

POR. SEC'S 18, 19, 20, & 29, T.7N, R.10E, M.D.B.&M.
 POR. SEC. 24, T.7N, R.9E, M.D.B.&M.

Map changes become effective with the 2014-2015 roll year. Parcel numbers are subject to change prior to adoption of roll on each July 1.

IMPORTANT NOTE: This map was prepared for property tax assessment purposes only. It is assumed that the property, as described in it's deed, is the property being assessed. No liability is assumed for the accuracy of the data delineated hereon.



- 1-R.M. Bk. 17, Pg. 2
- 2-R.M. Bk. 14, Pg. 6
- 3-R.M. Bk. 20, Pg. 1
- 4-R.M. Bk. 21, Pg. 55
- 5-R.M. Bk. 21, Pg. 88
- 6-R.M. Bk. 23, Pg. 8
- 7-R.M. Bk. 23, Pg. 30
- 8-R.M. Bk. 25, Pg. 41
- 9-R.M. Bk. 25, Pg. 64
- 10-R.M. Bk. 25, Pg. 73
- 11-R.M. Bk. 26, Pg. 31
- 12-R.M. Bk. 27, Pg. 17
- 13-R.M. Bk. 45, Pg. 36
- 14-R.M. Bk. 47, Pg. 24
- 15-R.M. Bk. 47, Pg. 62
- 16-R.M. Bk. 49, Pg. 44
- 17-R.M. Bk. 54, Pg. 80
- 18-R.M. Bk. 60, Pg. 44
- 19-R.M. Bk. 17, Pg. 2
- 20-R.M. Bk. 20, Pg. 1
- 21-R.M. Bk. 25, Pg. 63
- 22-R.M. Bk. 25, Pg. 88
- 23-R.M. Bk. 25, Pg. 30
- 24-R.M. Bk. 27, Pg. 17
- 25-R.M. Bk. 45, Pg. 36
- 26-R.M. Bk. 47, Pg. 24
- 27-R.M. Bk. 47, Pg. 62
- 28-R.M. Bk. 49, Pg. 44
- 29-R.M. Bk. 54, Pg. 80
- 30-R.M. Bk. 60, Pg. 44

Assessor's Map Bk. 8, Pg. 12
 County of Amador, Calif.

POR. SEC'S. 8,17,18 & 20, T. 8N., R.11E., M.D.B. & M.

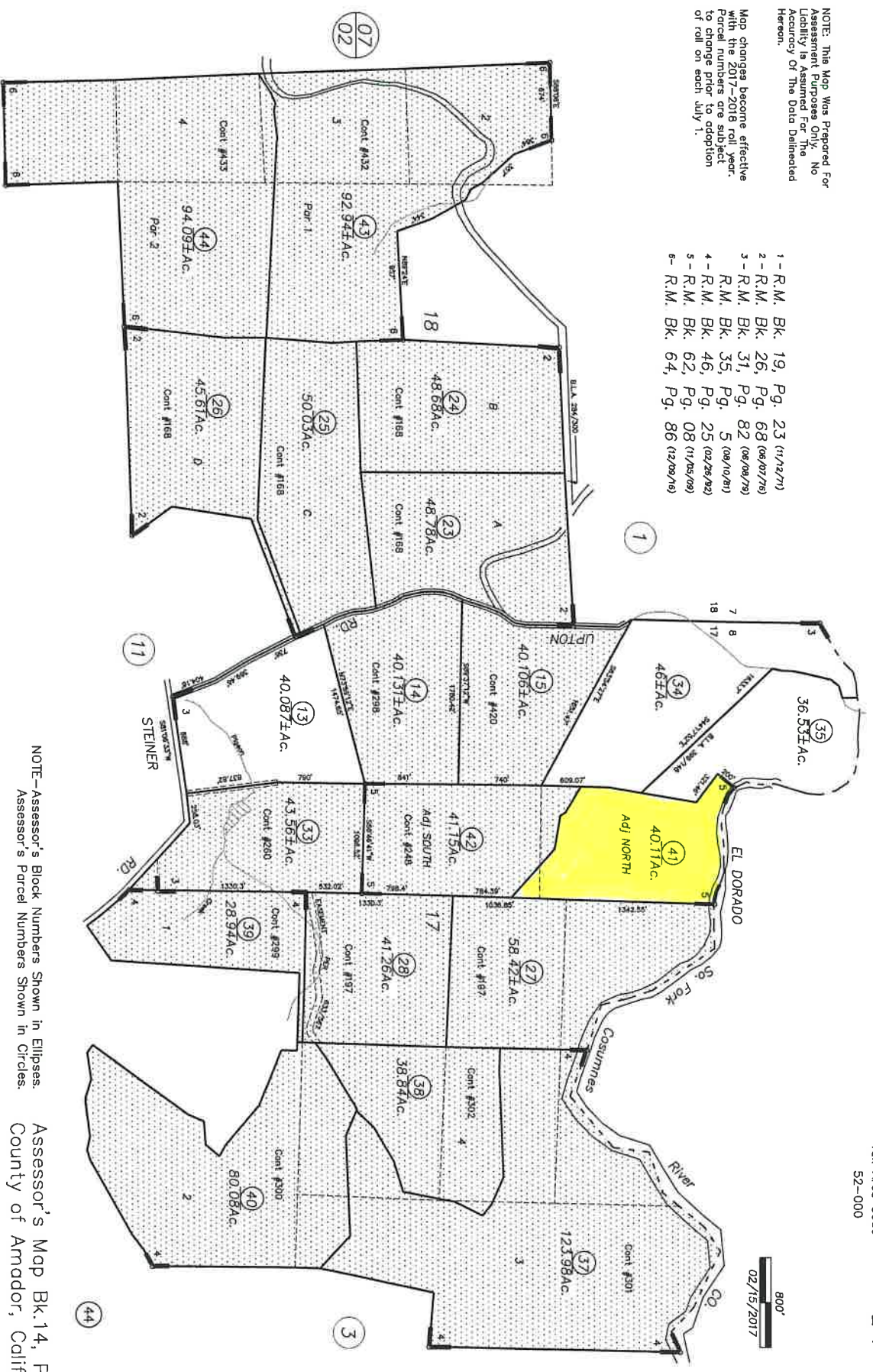
Tax Area Code
52-000

14-02

NOTE: This Map Was Prepared For Assessment Purposes Only. No Liability Is Assumed For The Accuracy Of The Data Delineated Hereon.

Map changes become effective with the 2017-2018 roll year. Parcel numbers are subject to change prior to adoption of roll on each July 1.

- 1 - R.M. Bk. 19, Pg. 23 (11/12/71)
- 2 - R.M. Bk. 26, Pg. 68 (06/07/76)
- 3 - R.M. Bk. 31, Pg. 82 (06/08/79)
- 4 - R.M. Bk. 35, Pg. 5 (09/10/81)
- 5 - R.M. Bk. 46, Pg. 25 (02/28/92)
- 6 - R.M. Bk. 62, Pg. 08 (11/05/09)
- 7 - R.M. Bk. 64, Pg. 86 (12/09/19)



NOTE-Assessor's Block Numbers Shown in Ellipses.
Assessor's Parcel Numbers Shown in Circles.

Assessor's Map Bk. 14, Pg. 02
County of Amador, Calif.

IMPORTANT NOTE: This map was prepared for property tax assessment purposes only. It is assumed that the property as described in its deed is the property being assessed. No liability is assumed for the accuracy of the data delineated hereon.

Map changes become effective with the 2017-2018 roll year. Parcel numbers are subject to change prior to adoption of roll on each July 1.



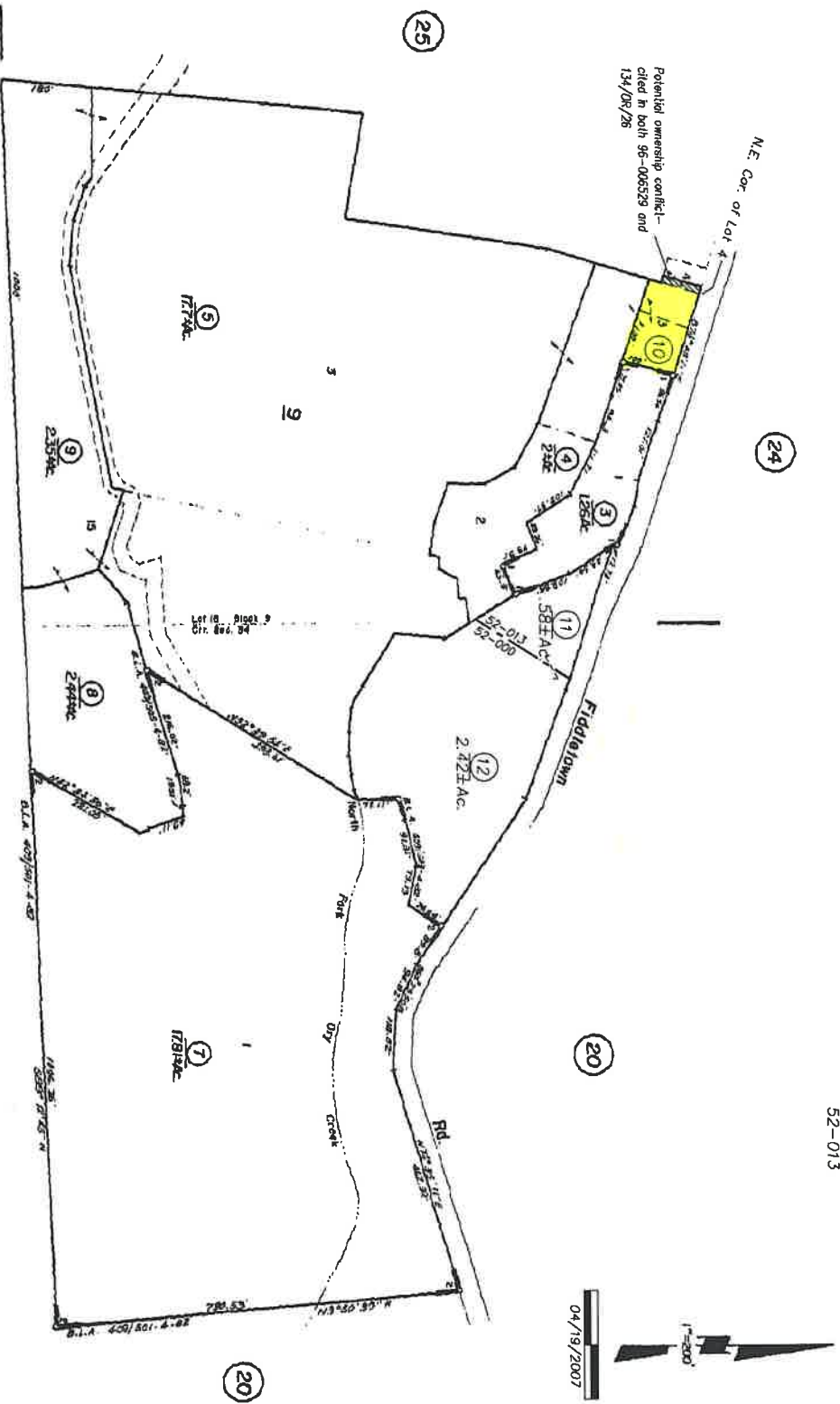
- 1- R.M.Bk. 1, Pg.13 River Pines Sub. Unit #3 (5/28/04)
- 2- R.M.Bk. 1, Pg.20 Pine Lodge Park Sub. #1 (6/28/04)
- 3- P.M.Bk.33, Pg. 3 Reversion to coverage (1/16/79)
- 4- R.M.Bk.42, Pg. 4 (10/8/87)
- 5- R.M.Bk.45, Pg.38 (2/27/91)
- 6- R.M.Bk.46, Pg.21 (1/30/82)

NOTE--Assessor's Block Numbers Shown in Ellipses.
Assessor's Parcel Numbers Shown in Circles.

FOR SEC. 34, T8N, R11E, M.D.B. 8 M.

Tax Area Code
52-000
52-013

14-30



IMPORTANT NOTE: This map was prepared for property tax assessment purposes only. It is assumed that the property, as described in it's deed, is the property being assessed. No liability is assumed for the accuracy of the data delineated hereon.

Map changes become effective with the 99-2000 roll year. Parcel numbers are subject to change prior to adoption of roll on each July 1.

Fiddletown Township
1- P.M. Bk 29, Pg. 33
2- P.M. Bk 36, Pg. 3

Assessor's Map Bk. 14, Pg. 30
County of Amador, Calif.

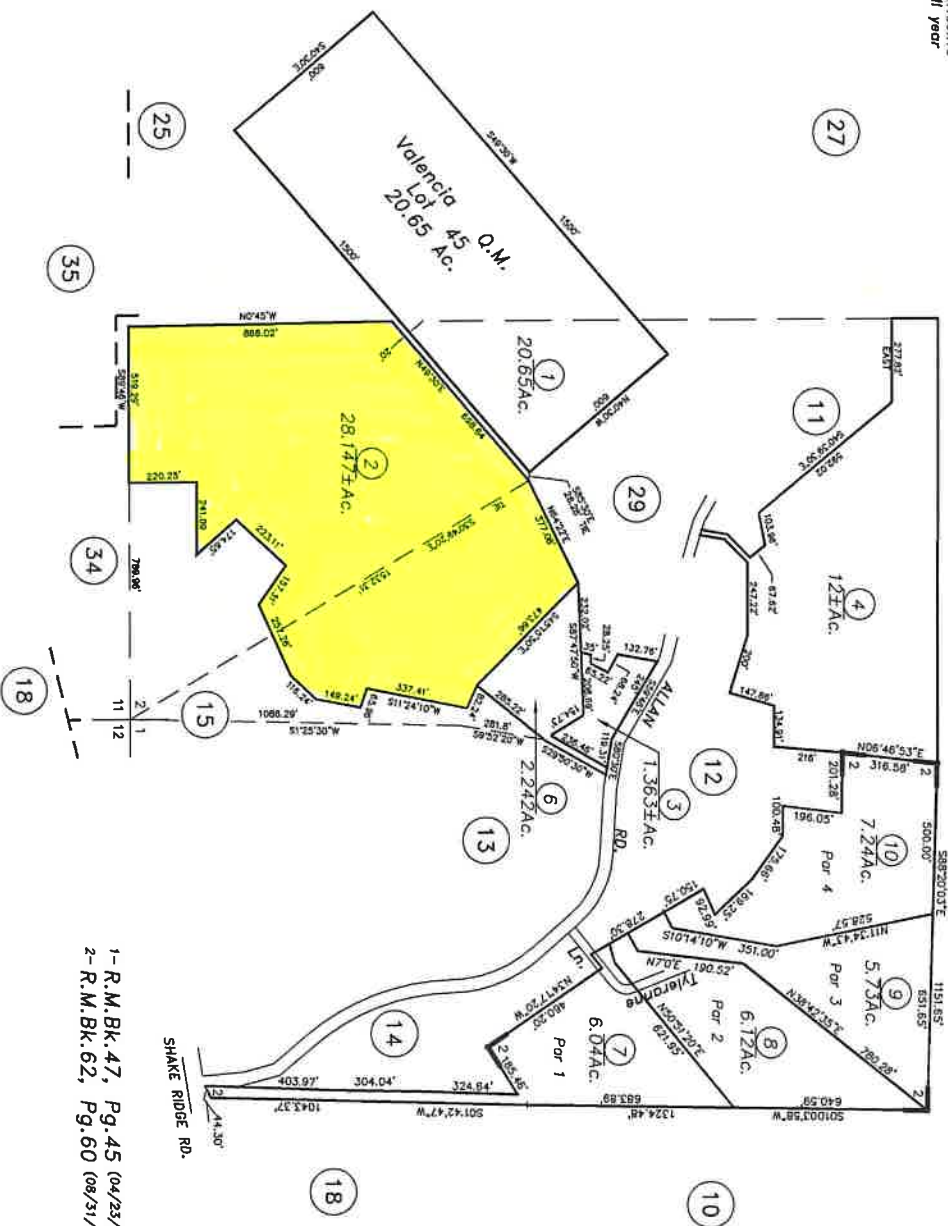
POR. SW 1/4 SEC. 1, POR. SE 1/4 SEC. 2, T.7N, R.12E, M.D.B.&M.

Tax Area Code
52-086

21-31

NOTE: This Map Was Prepared For Assessment Purposes Only. No Liability is Assumed For The Accuracy Of The Data Delivered Hereon.

Map changes become effective with the 2011-2012 roll year



NOTE-Assessor's block Numbers Shown in Ellipses.
Assessor's Parcel Numbers Shown in Circles.

Assessor's Map Bk. 21, Pg. 31
County of Amador, Calif.

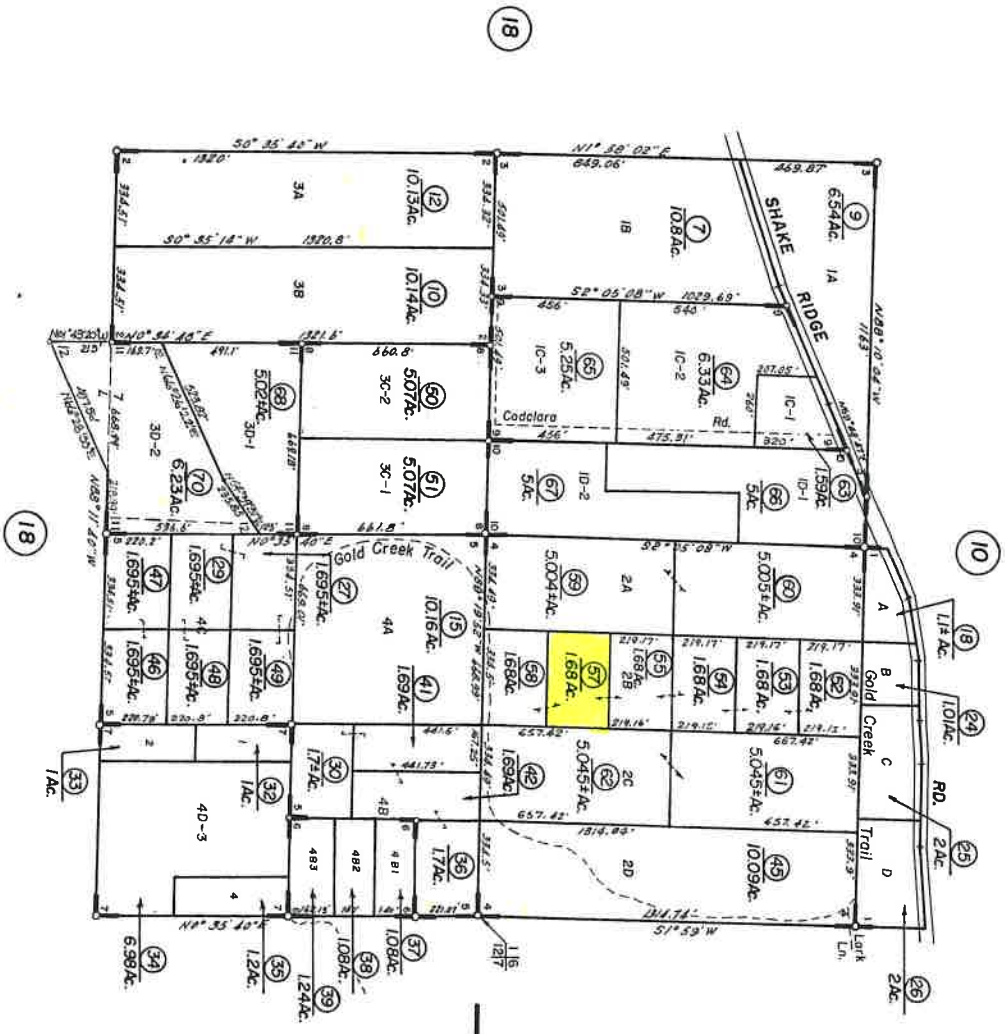
1-R.M.Bk.47, Pg.45 (04/23/93)
2-R.M.Bk.62, Pg.60 (08/31/10)

(10)

POR. SEC'S 1 & 12, T.7N., R.12E., M.D.B. & M.

Tax Area Code
52-066

21-32



- 1-R.M. Bk 16, Pg. 46
- 2-R.M. Bk 16, Pg. 83
- 3-R.M. Bk 16, Pg. 88
- 4-R.M. Bk 16, Pg. 89
- 5-R.M. Bk 17, Pg. 34
- 6-R.M. Bk 19, Pg. 38
- 7-R.M. Bk 20, Pg. 47
- 8-R.M. Bk 25, Pg. 31
- 9-P.M. Bk 32, Pg. 52
- 10-P.M. Bk 36, Pg. 10
- 11-P.M. Bk 38, Pg. 19
- 12-R.M. Bk 43, Pg. 53 (3/23/89)

NOTE—Assessor's Block Numbers Shown in Ellipses.
Assessor's Parcel Numbers Shown in Circles.

Assessor's Map Bk. 21, Pg. 32
County of Amador, Calif.

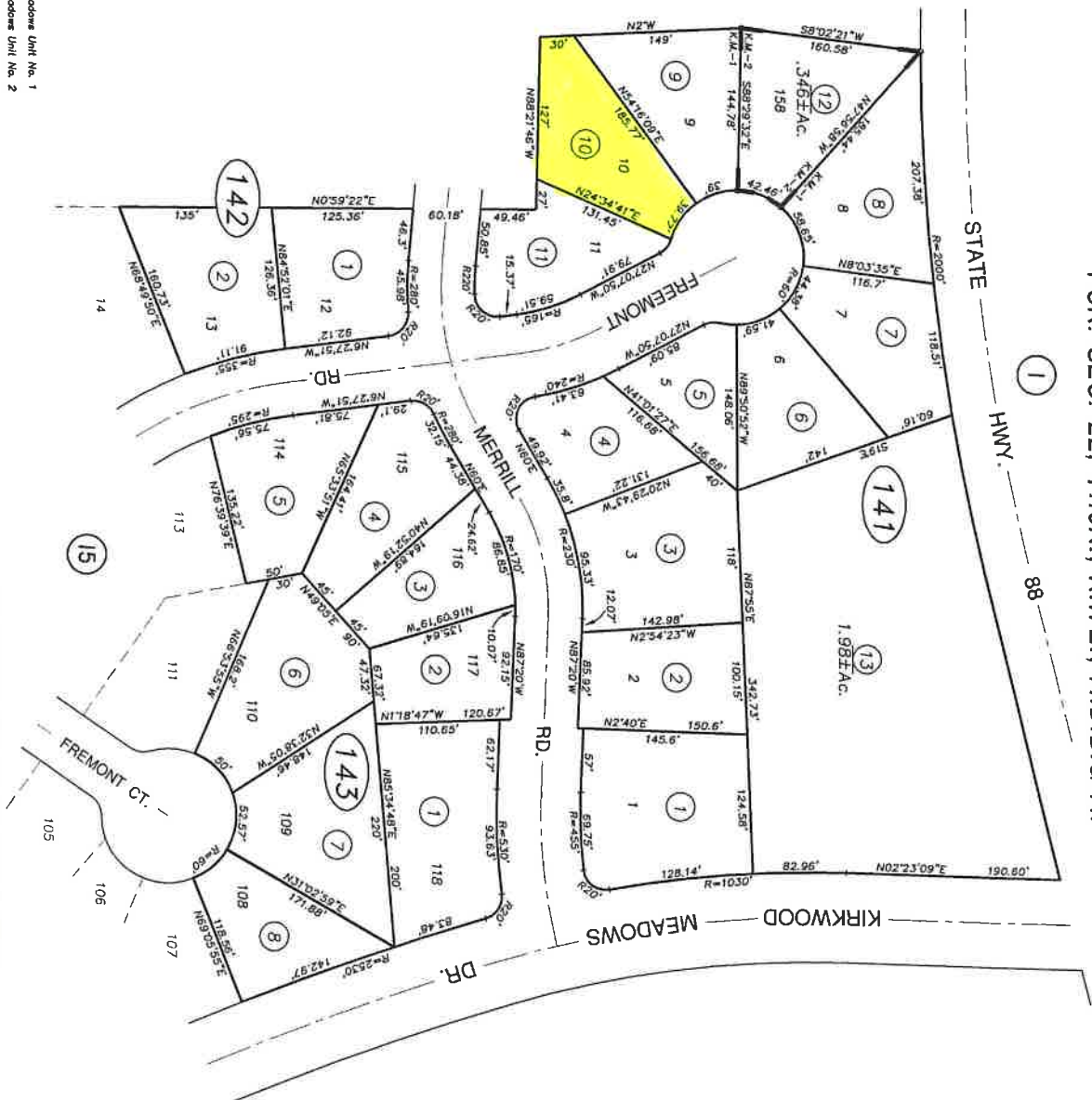
Map changes become effective with the 2009-2010 roll year. Parcel numbers are subject to change prior to adoption of roll on each July 1.

IMPORTANT NOTE: This map was prepared for property tax assessment purposes only. It is assumed that the property, as described in its deed, is the property being assessed. No liability is assumed for the accuracy of the data delineated hereon.

POR. SEC. 22, T.10N., R.17E., M.D.B.8 M.

26-14

FROM: 26-01



1"=100'
03/05/2009

R.M. Bk.03, Sub. Pg.30
Kirkwood Meadows Unit No. 1
R.M. Bk.03, Sub. Pg.91
Kirkwood Meadows Unit No. 2

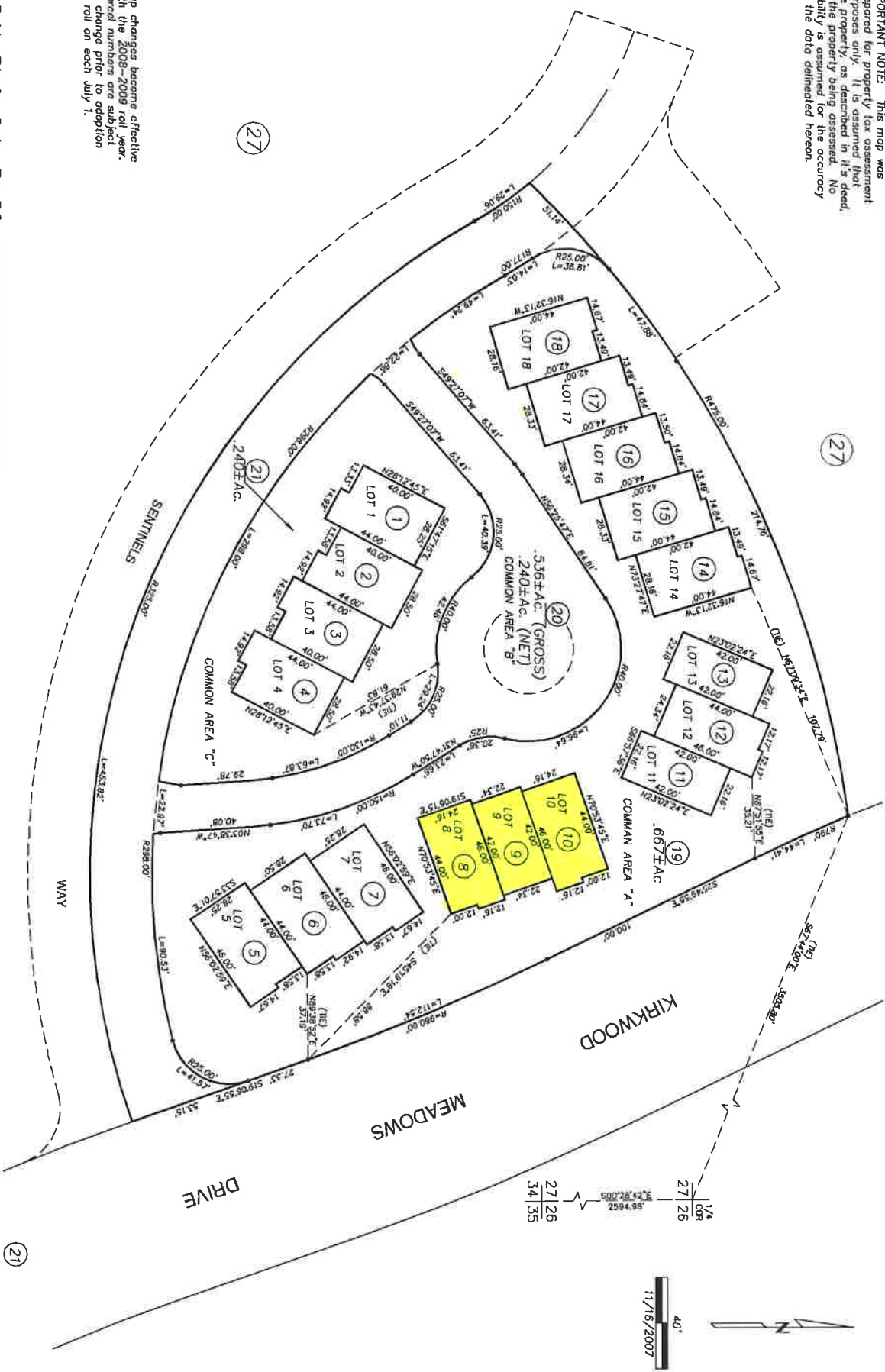
NOTE-Assessor's Block Numbers Shown in Ellipses.
Assessor's Parcel Numbers Shown in Circles.

Assessor's Map Bk. 26, Pg. 14
County of Amador, Calif.

IMPORTANT NOTE: This map was prepared for property tax assessment purposes only. It is assumed that the property, as described in this deed, is the property being assessed. No liability is assumed for the accuracy of the data delineated hereon.

POR. SEC. 27, T.10N., R.17E., M.D.B. & M.

26-30



Map changes become effective with the 2008-2009 roll year. Parcel numbers are subject to change prior to adoption of roll on each July 1.

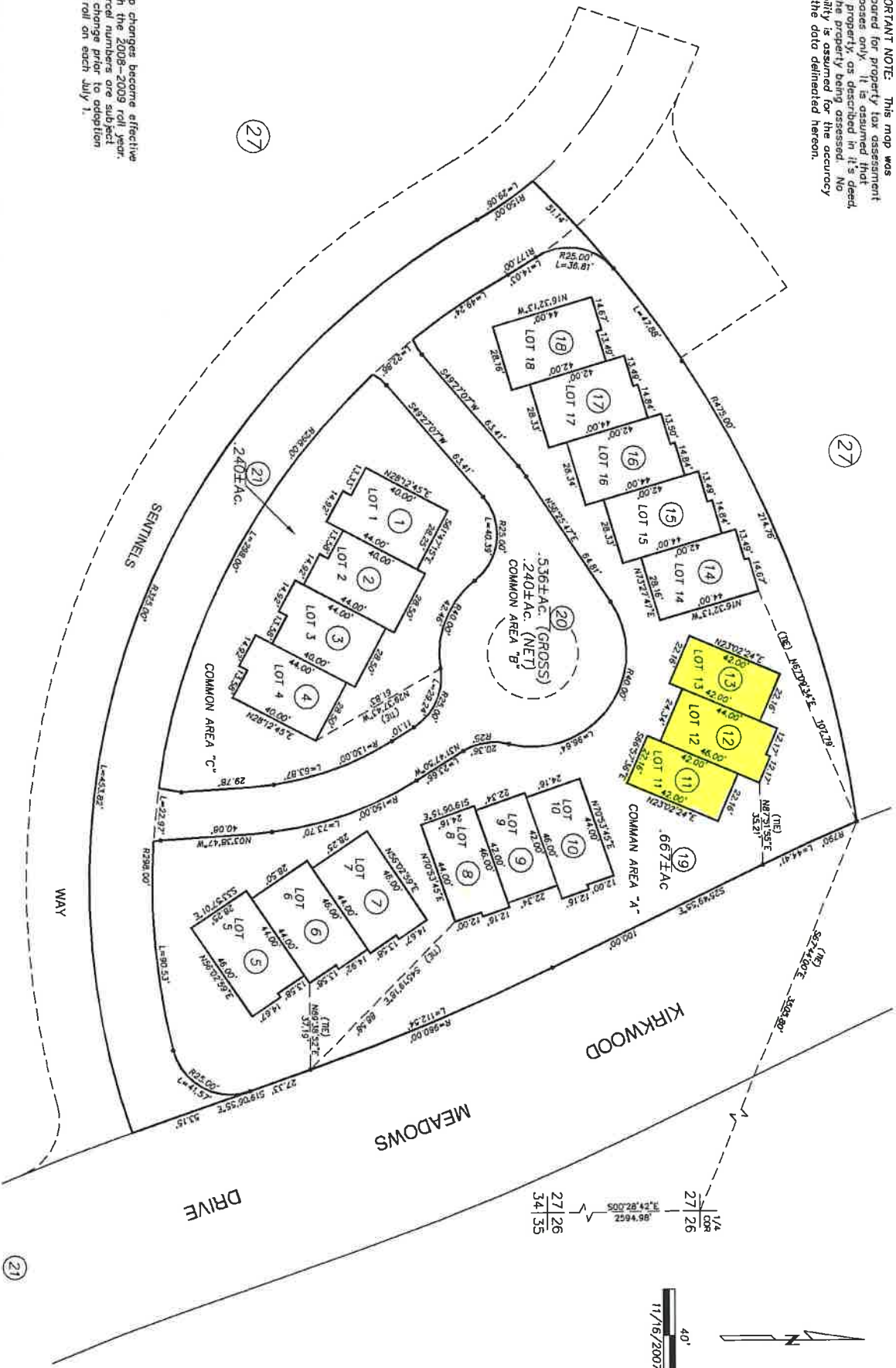
R.M. Bk. 9, Sub. Pg. 50 (11/8/2007) SENTINELS WEST AT KIRKWOOD

Assessor's Map Bk. 26, Pg. 30
County of Amador, Calif.

IMPORTANT NOTE: This map was prepared for property tax assessment purposes only. It is assumed that the property, as described in its deed, is the property being assessed. No liability is assumed for the accuracy of the data delineated hereon.

POR. SEC. 27, T.10N., R.17E., M.D.B. & M.

26-30



Map changes become effective with the 2008-2009 roll year. Parcel numbers are subject to change prior to adoption of roll on each July 1.

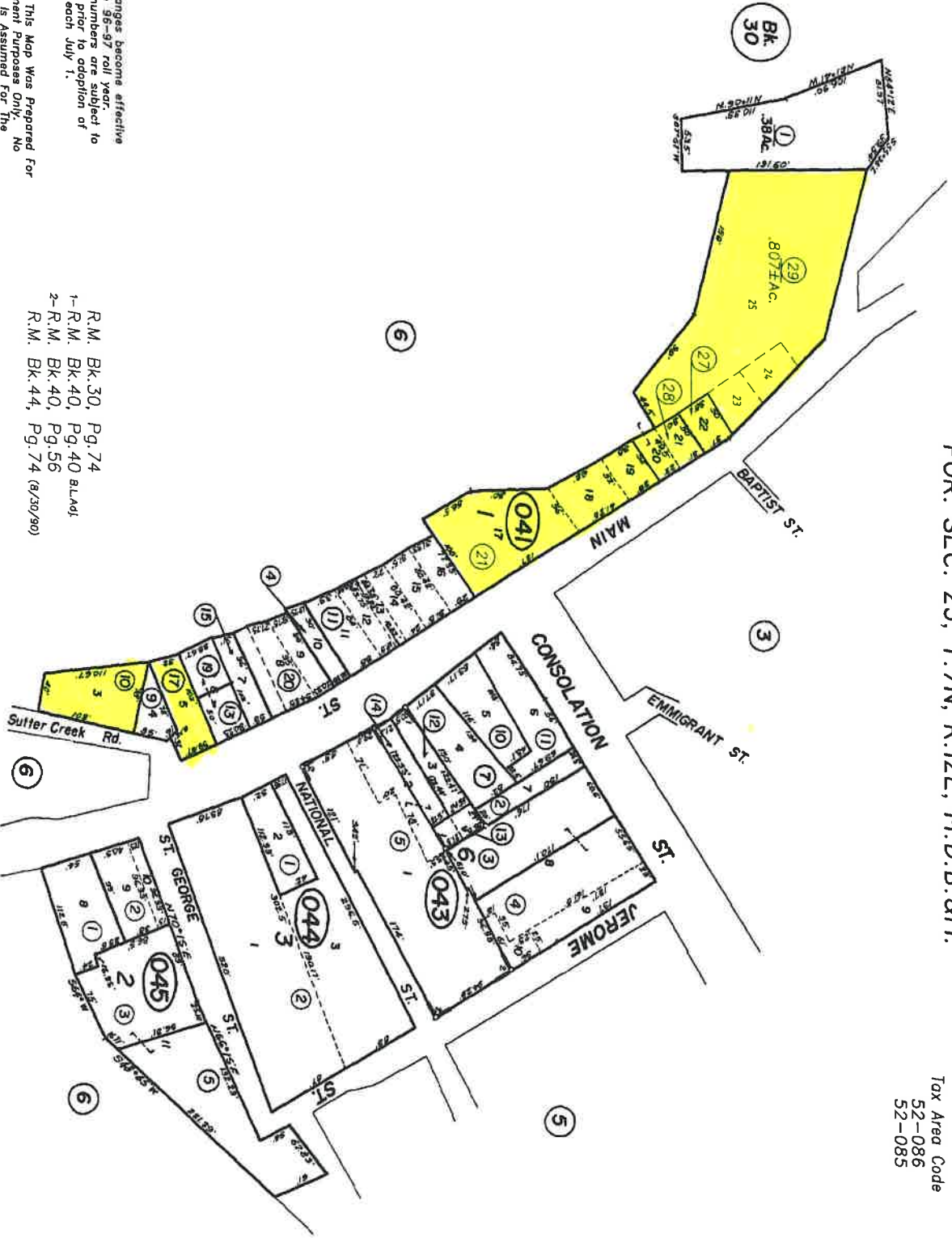
R.M. Bk. 9, Sub. Pg. 50 (11/8/2007) SENTINELS WEST AT KIRKWOOD

Assessor's Map Bk. 26, Pg. 30
County of Amador, Calif.

POR. SEC. 23, T. 7N, R. 12E, M.D.B. 8M.

Tax Area Code
52-086
52-085

29-04



Map changes become effective with the 30-97 roll year. Parcel numbers to change prior to adoption of roll on each July 1.

NOTE: This Map Was Prepared for Assessment Purposes Only. No Liability is Assumed for the Accuracy of The Data Delivered Hereon.

- R.M. Bk. 30, Pg. 74
- 1-R.M. Bk. 40, Pg. 40 s.l.v.d.
- 2-R.M. Bk. 40, Pg. 56
- R.M. Bk. 44, Pg. 74 (8/30/90)

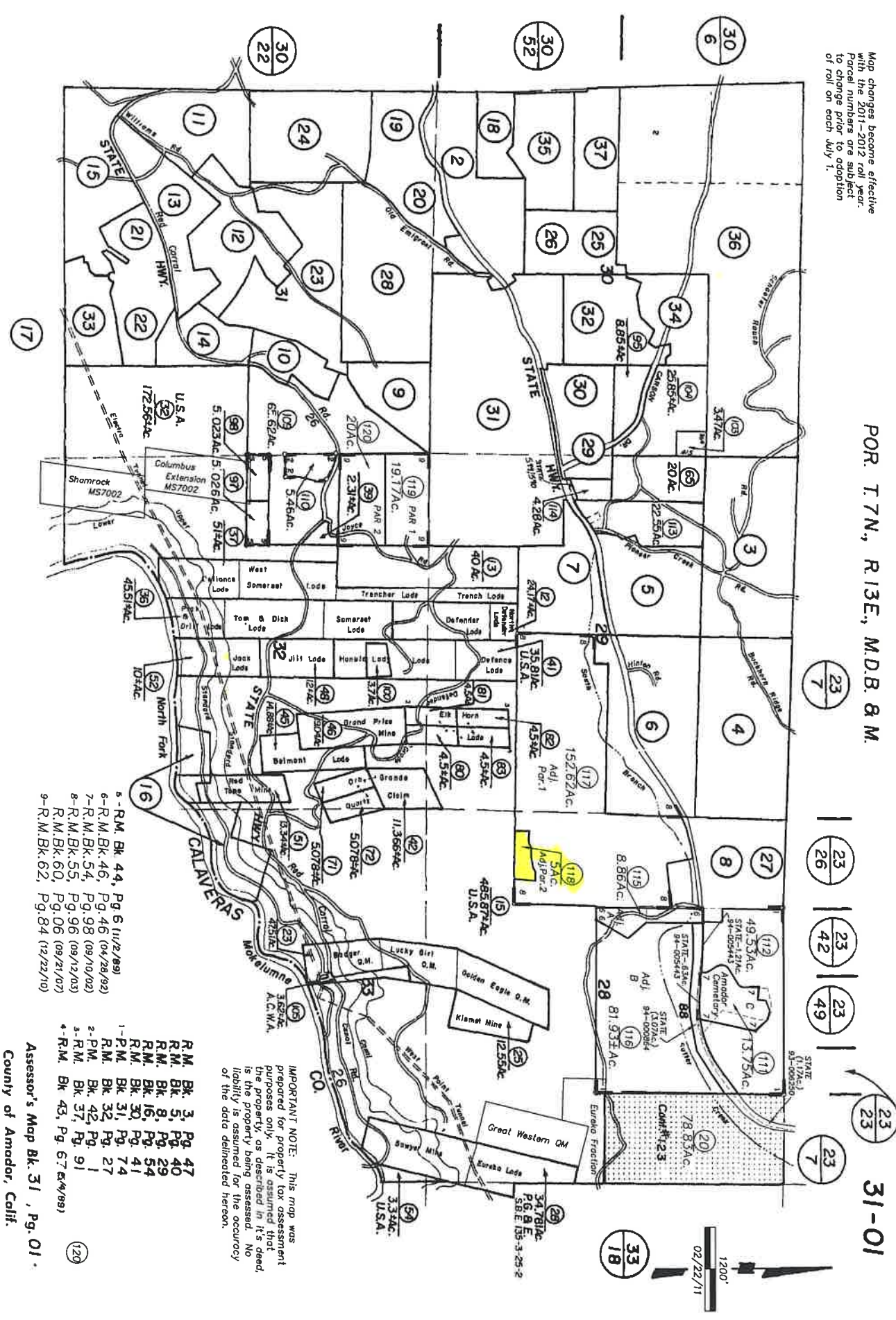
NOTE-Assessor's Block Numbers Shown in Ellipses.
Assessor's Parcel Numbers Shown in Circles.

Town of Volcano
Assessor's Map Bk. 29, Pg. 04
County of Amador, Calif.

Map changes become effective with the 2011-2012 roll year. Parcel numbers are subject to change prior to adoption of roll on each July 1.

POR. T 7N., R 13E., M.D.B. 8 M.

31-01



- 6-R.M. Bk. 44, Pg. 6 (11/2/89)
- 6-R.M. Bk. 46, Pg. 46 (04/28/92)
- 7-R.M. Bk. 54, Pg. 98 (09/10/02)
- 8-R.M. Bk. 55, Pg. 96 (09/12/03)
- R.M. Bk. 60, Pg. 06 (09/21/07)
- 9-R.M. Bk. 62, Pg. 84 (12/22/10)

IMPORTANT NOTE: This map was prepared for property tax assessment purposes only. It is assumed that the property, as described in it's deed, liability is assumed for the occurrence of the data delineated hereon.

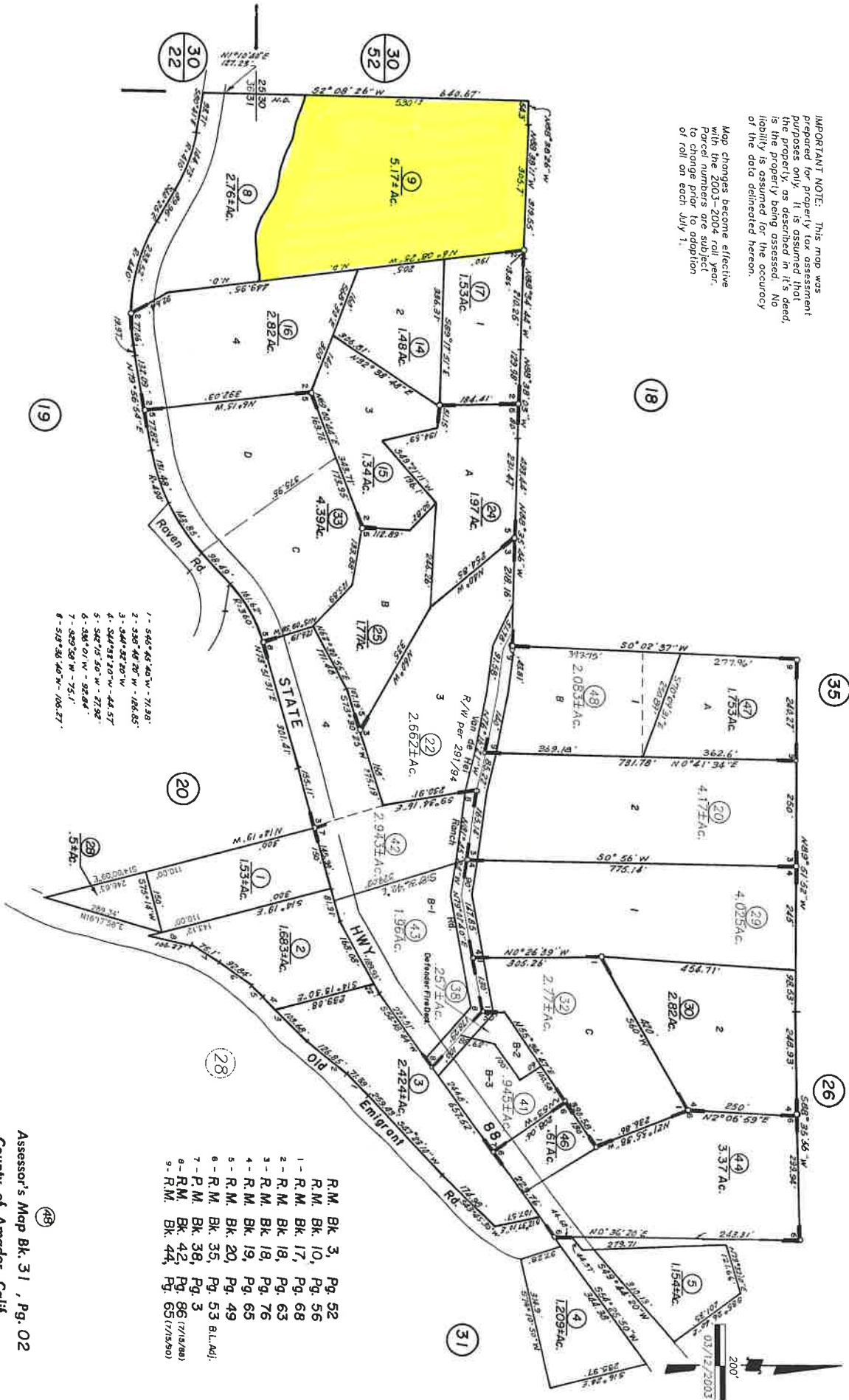
R.M. Bk. 3, Pg. 47
 R.M. Bk. 5, Pg. 40
 R.M. Bk. 8, Pg. 29
 R.M. Bk. 16, Pg. 54
 R.M. Bk. 30, Pg. 41
 R.M. Bk. 31, Pg. 74
 1-P.M. Bk. 32, Pg. 27
 R.M. Bk. 42, Pg. 1
 2-P.M. Bk. 42, Pg. 1
 3-R.M. Bk. 37, Pg. 91
 *R.M. Bk. 43, Pg. 67 (6/4/89)

Assessor's Map Bk. 31, Pg. 01
 County of Amador, Calif.

POR. SEC. 30 & 31, T.7N., R.13E., M.D.B.8M.

IMPORTANT NOTE: This map was prepared for property tax assessment purposes only. It is assumed that the property, as described in it's deed, is the property being assessed. No liability is assumed for the accuracy of the data delineated hereon.

Map changes become effective with the 2003-2004 roll. Year Parcel numbers are subject to change per the adoption of roll on each July 1.



- 1 - 344° 46' 40" W - 71.38'
- 2 - 330° 46' 20" W - 186.85'
- 3 - 344° 52' 20" W - 186.85'
- 4 - 344° 52' 20" W - 44.57'
- 5 - 342° 15' 50" W - 77.92'
- 6 - 338° 01' W - 92.84'
- 7 - 329° 59' W - 75.1'
- 8 - 319° 36' 40" W - 106.27'

- R.M. Bk. 3, Pg. 52
- R.M. Bk. 10, Pg. 56
- 1 - R.M. Bk. 17, Pg. 68
- 2 - R.M. Bk. 18, Pg. 63
- 3 - R.M. Bk. 18, Pg. 76
- 4 - R.M. Bk. 19, Pg. 65
- 5 - R.M. Bk. 20, Pg. 49
- 6 - R.M. Bk. 35, Pg. 53 B.L.A.J.
- 7 - P.M. Bk. 38, Pg. 3
- 8 - R.M. Bk. 42, Pg. 86 (7/19/88)
- 9 - R.M. Bk. 44, Pg. 65 (7/15/90)

Assessor's Map Bk. 31, Pg. 02
 County of Amador, Calif.

IMPORTANT NOTE: This map was prepared for property tax assessment purposes only. It is assumed that the property as described in this deed is the property being assessed. No liability is assumed for the accuracy of the data delineated hereon.

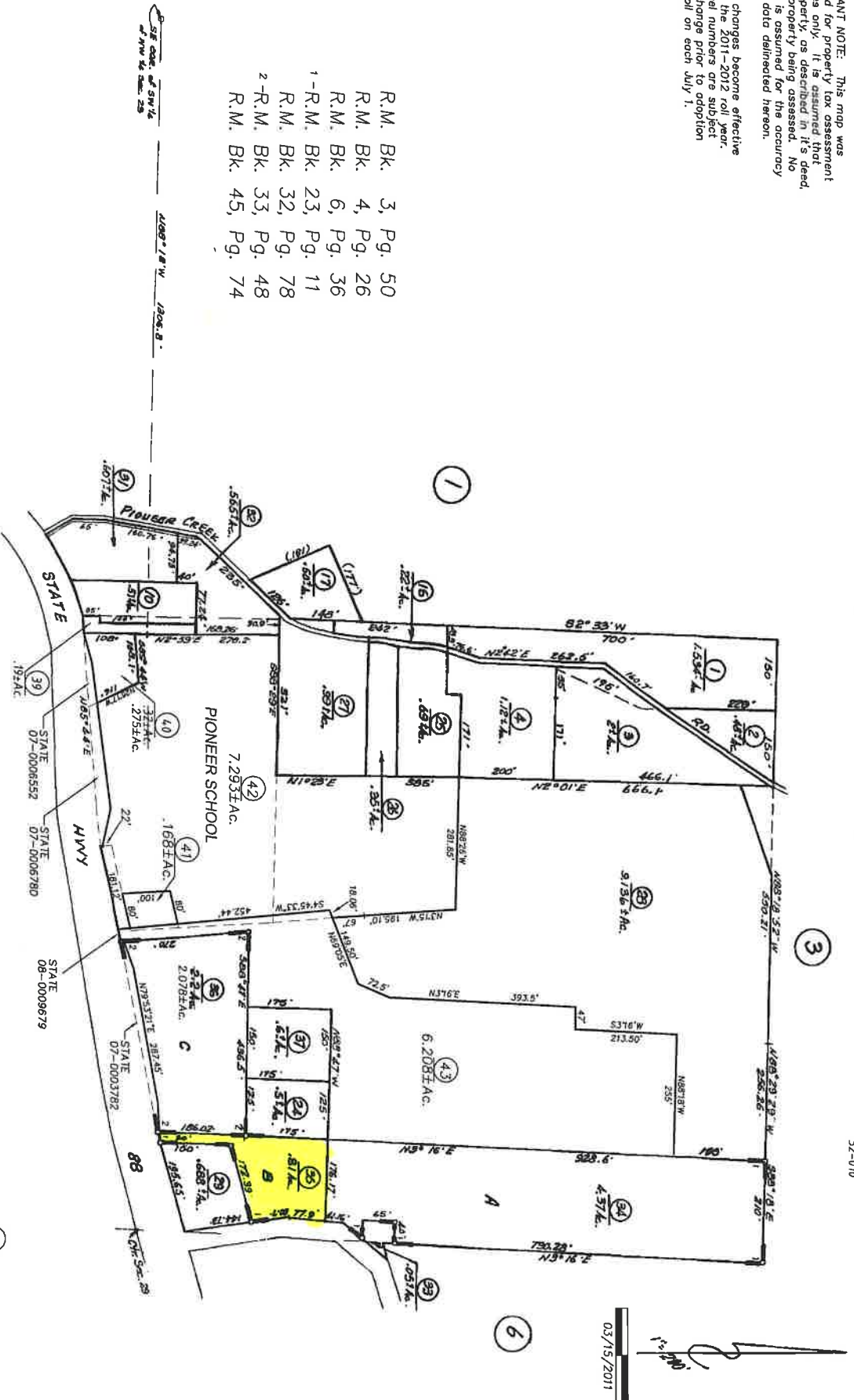
Map changes become effective with the 2011-2012 roll year. Parcel numbers are subject to change prior to adoption of roll on each July 1.

PDR. W 1/2 SEC. 29, T. 7N, R. 13E, M.D.B. & M.

Tax Area Code 52-010

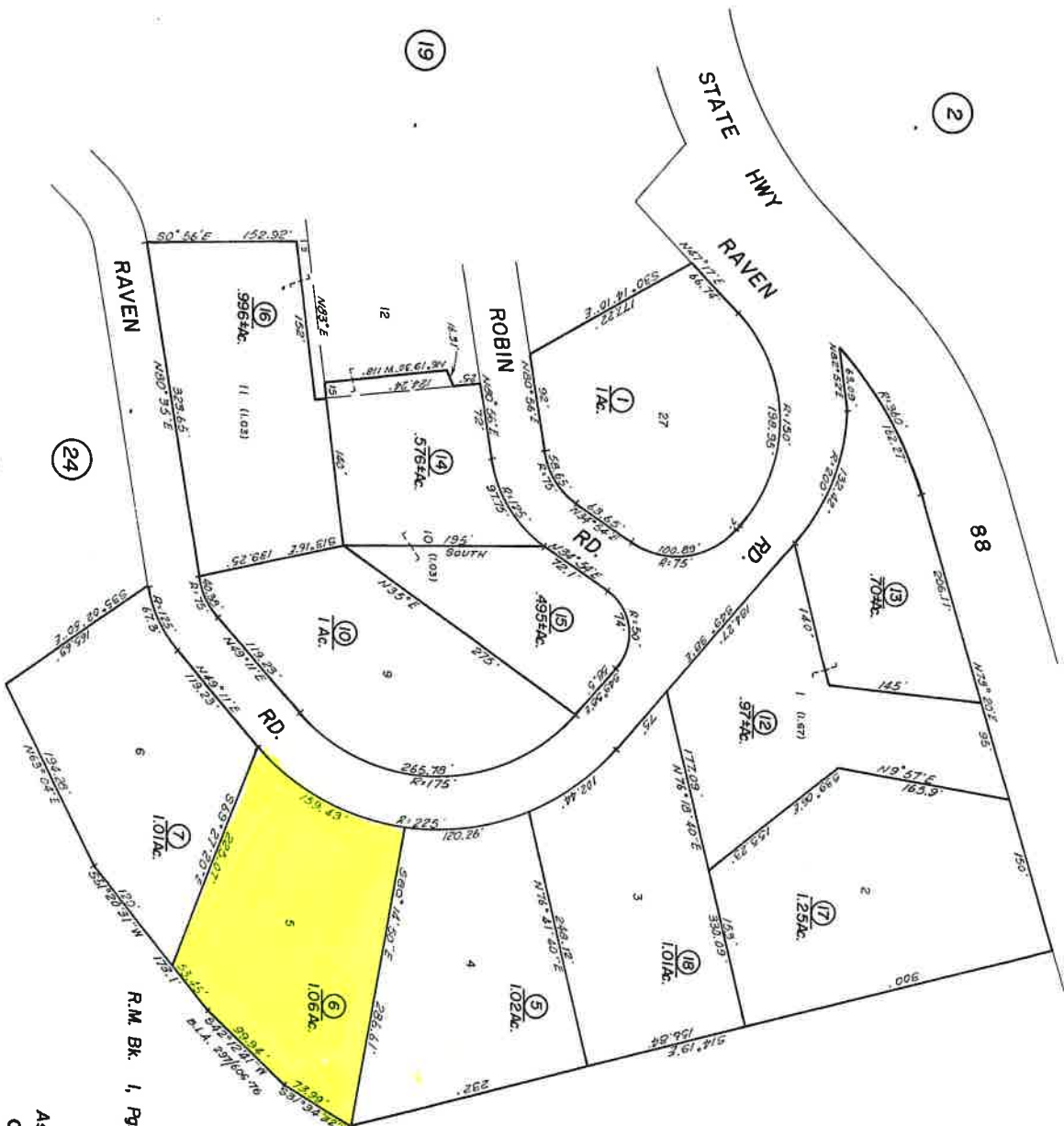
31-05

- R.M. Bk. 3, Pg. 50
- R.M. Bk. 4, Pg. 26
- R.M. Bk. 6, Pg. 36
- 1-R.M. Bk. 23, Pg. 11
- R.M. Bk. 32, Pg. 78
- 2-R.M. Bk. 33, Pg. 48
- R.M. Bk. 45, Pg. 74



POR. SEC'S 30 & 31, T. 7N., R. 13E., M.D.B. & M.

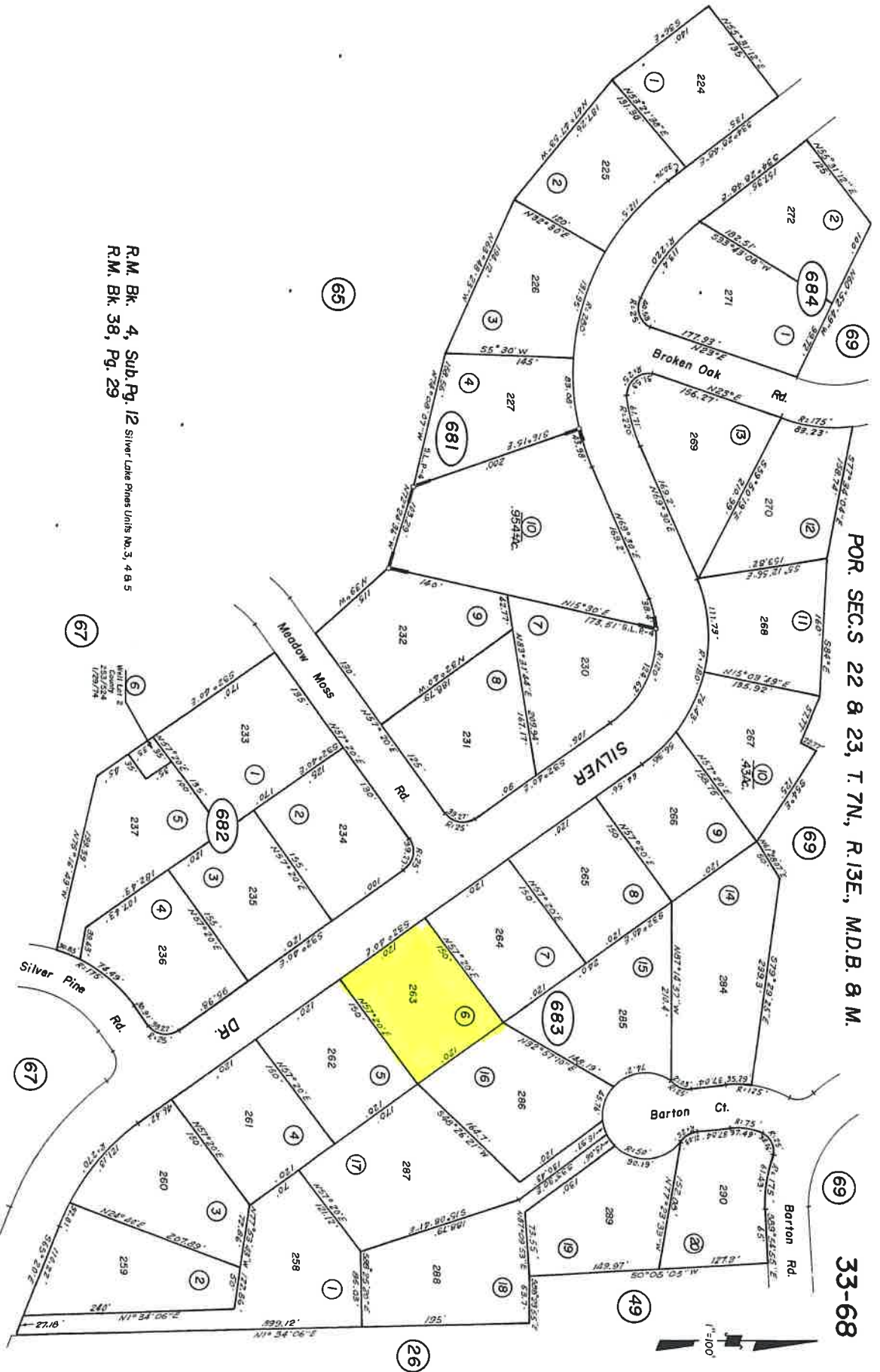
31-20



R.M. Bk. 1, Pg. 45 Morris Haven Unit No. 1
Assessor's Map Bk. 31, Pg. 20
County of Amador, Calif.

FOR SECS 22 & 23, T. 7N., R. 13E., M.D.B. & M.

33-68

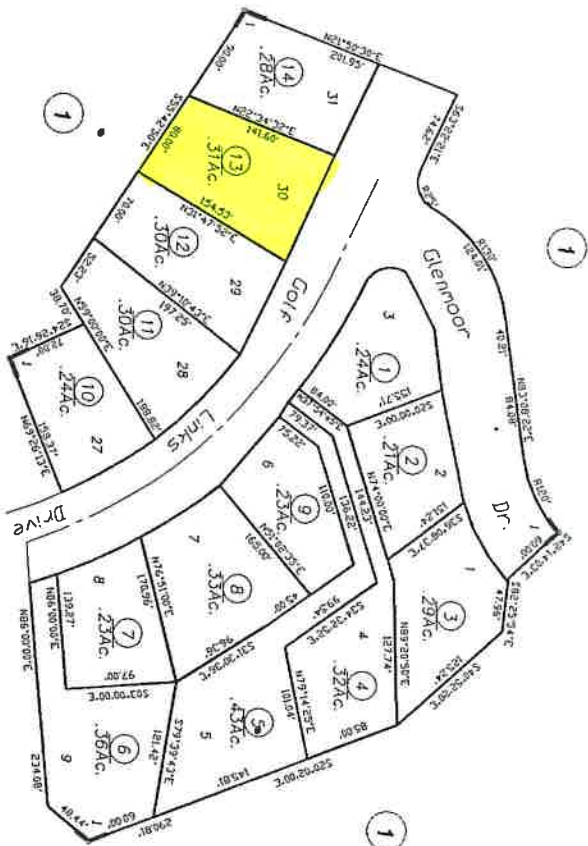


R.M. Bk. 4, Sub. Pg. 12 Silver Lake Phases Units No. 3, 4 & 5
R.M. Bk. 38, Pg. 29

11/88 Roll 87-30
(7) from 89/89

NOTE—Assessor's Block Numbers Shown in Ellipses.
Assessor's Parcel Numbers Shown in Circles.

Assessor's Map Bk. 33, Pg. 68
County of Amador, Calif.



1"=100'

1-R.M. Bk. 7, Sub.Pg. 18 Fairway Pines Unit 11A

Map changes become effective with the 57-58 roll year. Parcel numbers are subject to change prior to adoption of roll on each July 1.

IMPORTANT NOTE: This map was prepared for property assessment purposes only. It is assumed that the property is being assessed. No liability is assumed for the accuracy of the data delineated hereon.

NOTE-Assessor's Block Numbers Shown in Ellipses.
Assessor's Parcel Numbers Shown in Circles.

Assessor's Map Bk.33, Pg.78
County of Amador, Calif.

(14)

(77)

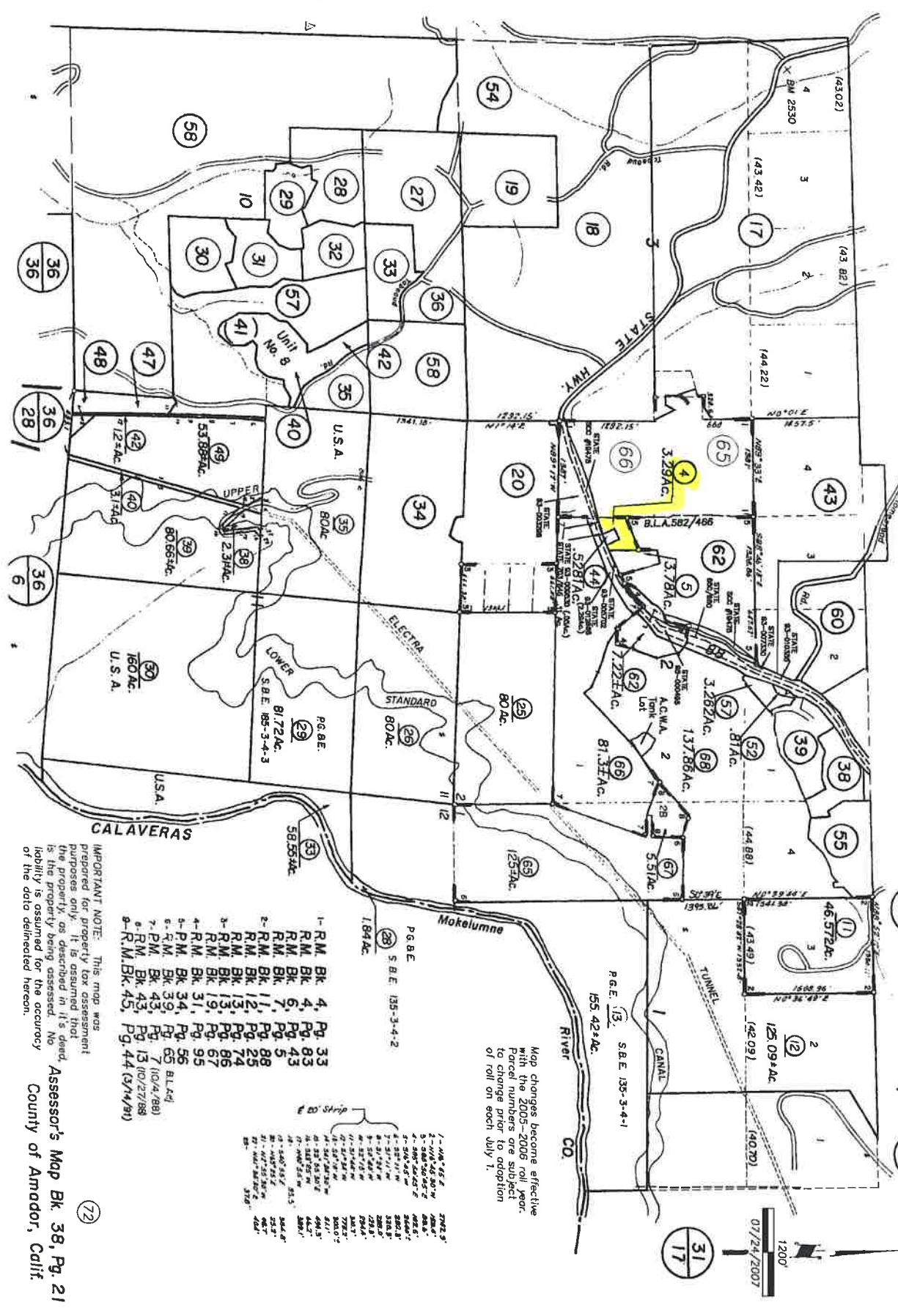
(1)

(1)

(1)

T. 6 N., R. 12 E.

38-21



Map changes become effective with the 2005-2006 roll year. Parcel numbers are subject to change prior to adoption of roll on each July 1.

IMPORTANT NOTE: This map was prepared for property tax assessment purposes only. It is assumed that the property, as described in it's deed, is the property being assessed. No liability is assumed for the accuracy of the data delineated hereon.

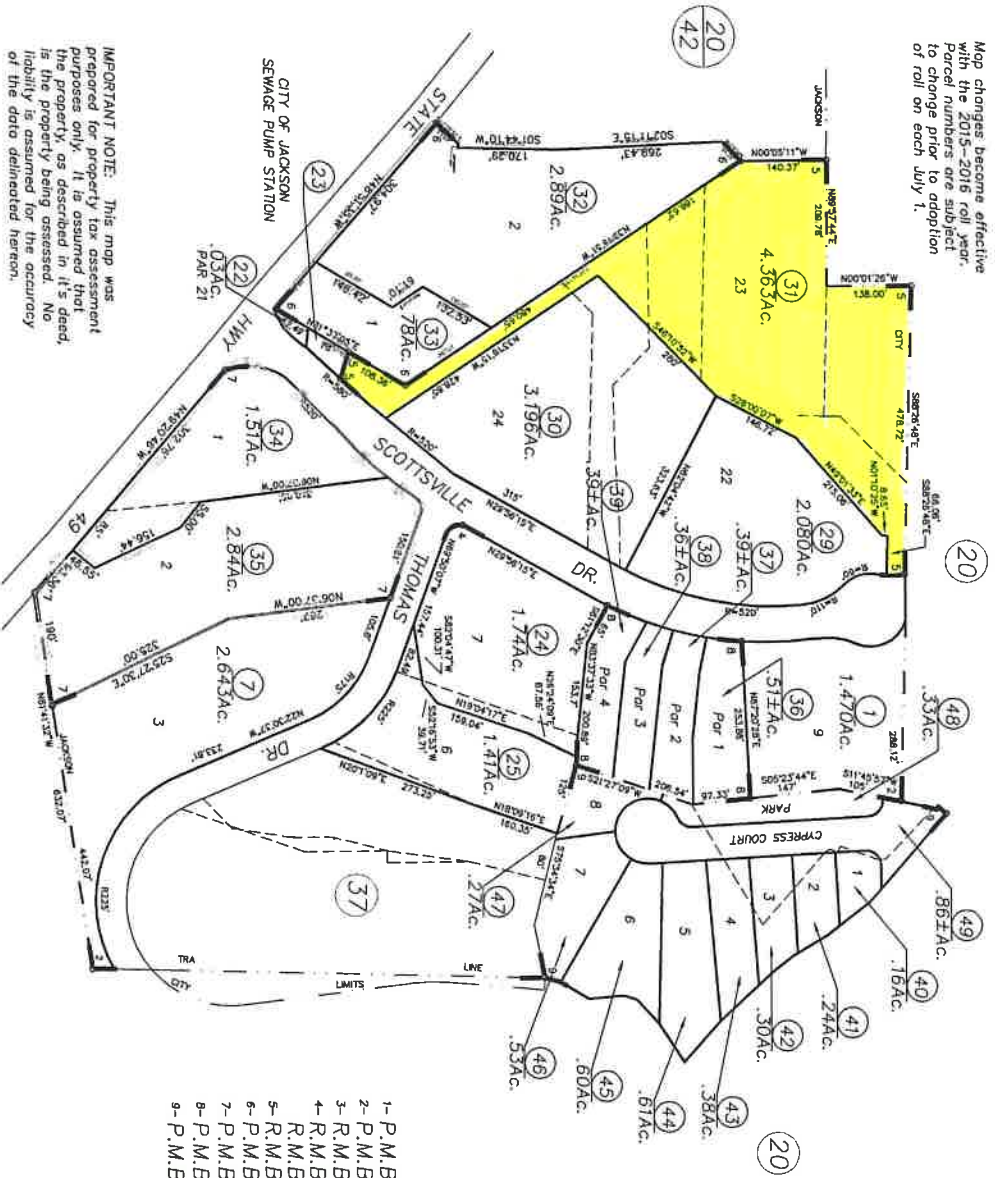
Assessor's Map Bk 38, Pg. 21
County of Amador, Calif.

(72)

MT. ZION
VALM 2968

- 1- 146 458 4
- 2- 146 458 4
- 3- 146 458 4
- 4- 146 458 4
- 5- 146 458 4
- 6- 146 458 4
- 7- 146 458 4
- 8- 146 458 4
- 9- 146 458 4
- 10- 146 458 4
- 11- 146 458 4
- 12- 146 458 4
- 13- 146 458 4
- 14- 146 458 4
- 15- 146 458 4
- 16- 146 458 4
- 17- 146 458 4
- 18- 146 458 4
- 19- 146 458 4
- 20- 146 458 4
- 21- 146 458 4
- 22- 146 458 4
- 23- 146 458 4
- 24- 146 458 4
- 25- 146 458 4
- 26- 146 458 4
- 27- 146 458 4
- 28- 146 458 4
- 29- 146 458 4
- 30- 146 458 4
- 31- 146 458 4
- 32- 146 458 4
- 33- 146 458 4
- 34- 146 458 4
- 35- 146 458 4
- 36- 146 458 4
- 37- 146 458 4
- 38- 146 458 4
- 39- 146 458 4
- 40- 146 458 4
- 41- 146 458 4
- 42- 146 458 4
- 43- 146 458 4
- 44- 146 458 4
- 45- 146 458 4
- 46- 146 458 4
- 47- 146 458 4
- 48- 146 458 4
- 49- 146 458 4
- 50- 146 458 4
- 51- 146 458 4
- 52- 146 458 4
- 53- 146 458 4
- 54- 146 458 4
- 55- 146 458 4
- 56- 146 458 4
- 57- 146 458 4
- 58- 146 458 4
- 59- 146 458 4
- 60- 146 458 4
- 61- 146 458 4
- 62- 146 458 4
- 63- 146 458 4
- 64- 146 458 4
- 65- 146 458 4
- 66- 146 458 4
- 67- 146 458 4
- 68- 146 458 4
- 69- 146 458 4
- 70- 146 458 4
- 71- 146 458 4
- 72- 146 458 4

Map changes become effective with the 2015-2016 roll year. Parcel numbers are subject to change prior to adoption of roll on each July 1.



- 1- P.M.Bk.30, Pg.34
- 2- P.M.Bk.41, Pg.37 JACKSON BUSINESS CENTER
- 3- R.M.Bk.43, Pg.22 JACKSON BUSINESS CENTER (12/5/88)
- 4- R.M.Bk.43, Pg.65
- 5- R.M.Bk.43, Pg.66
- 6- P.M.Bk.45, Pg.43 (3/7/91)
- 7- P.M.Bk.53, Pg.7 (2/18/2000)
- 8- P.M.Bk.56, Pg.16 (1/17/2003)
- 9- P.M.Bk.61, Pg.13 (1/23/2008)
- 9- P.M.Bk.09 SUB, Pg.67 (07/11/2014)

IMPORTANT NOTE: This map was prepared for property tax assessment purposes only. It is assumed that the property, as described in it's deed, is the property being assessed. No liability is assumed for the accuracy of the data delineated hereon.