



Specialty Granules LLC

Lone Plant

From the roof to the road to the dinner table, our rocks improve lives.

Presentation Overview

1. SPECIALTY GRANULES LLC
2. IONE QUARRY
 - a. Site Location
 - b. Existing Operations
3. USE PERMIT AND RECLAMATION PLAN AMENDMENT
 - a. Goals and Objectives
 - b. Land Use and Environmental Setting
 - c. Project Description
 - d. Reclamation Plan
 - e. Technical Studies

Specialty Granules LLC

Overview

Kevin Moore
Director Mine Planning
and Capital

10-05-2021

SPECIALTY GRANULES LLC

- **Leader** in roofing and industrial minerals, supplying specialized products to the North American building materials industry.
- **Ethical**, with business practices led by our priorities of safety, environmental, quality, service, and cost.
- **Respectful** of the environment and our neighbors, ensuring site activities protect the surrounding resources.
- **Safety** is a top priority. SGI won NSSGA Sterling Safety awards in 2016, 2017, and 2021.
- **Environmental** practices recognized by NSSGA with Ione receiving 3 awards in the last 3 years, 2 Bronze awards and Gold in 2020 (5-Year Recognition for Gold).

An aerial photograph of an industrial facility, likely a quarry or processing plant, with various structures, conveyor belts, and material piles. A semi-transparent white text box is overlaid in the center of the image.

Existing Ione Operations

George Dias Site Manager



SITE LOCATION



IONE QUARRY



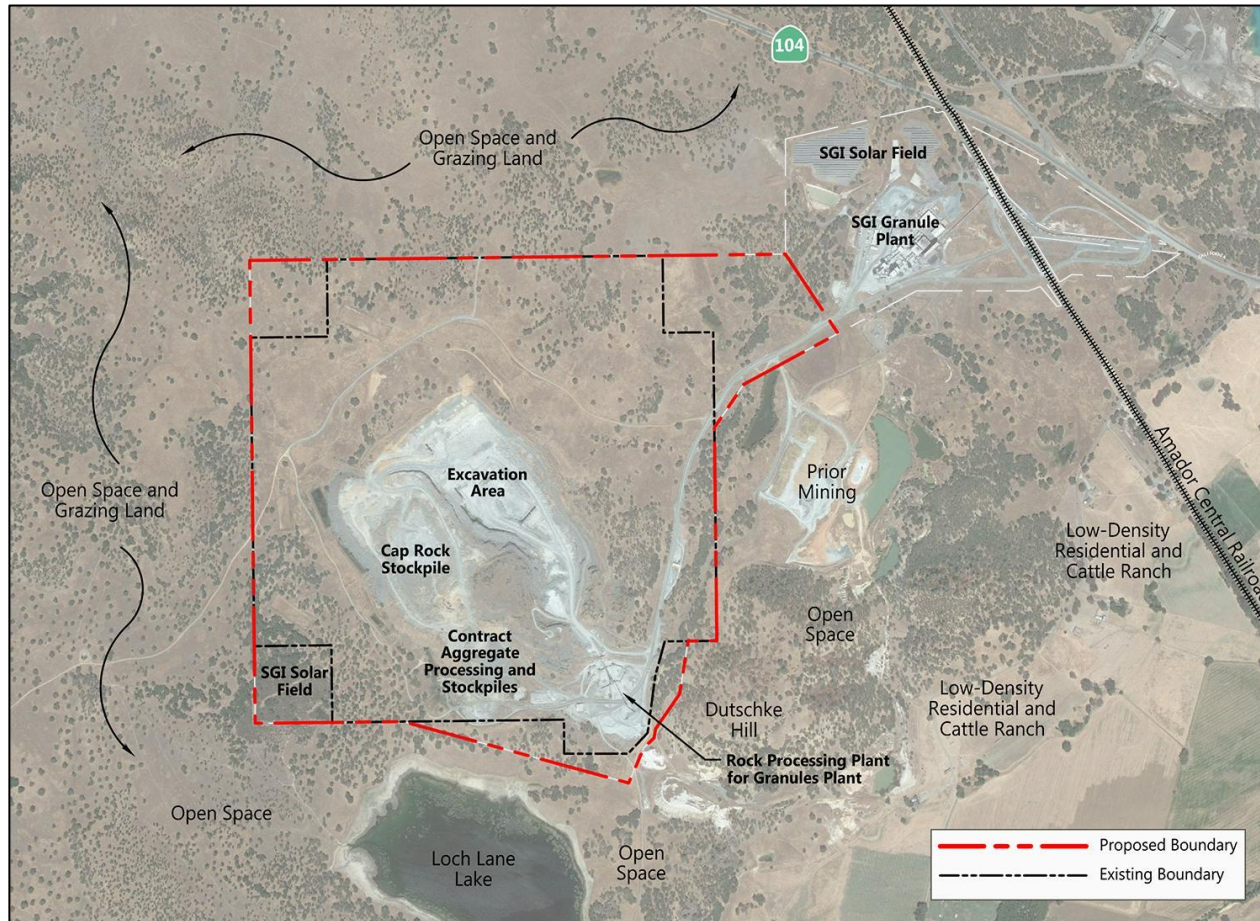
Why here?

- The manufacture of roofing granules requires unique geology: hardness, color, durability. The meta-andesite we mine supports this!
- Must have adequate infrastructure to support the milling and coloring processes – raw materials, gas, electric, water, transportation (truck and rail)
- Must be close to customers to limit transportation-related issues

What products?

- Colored roofing granules, including Title 24-compliant reflective granules
- Headlap and backsurfacing
- Other industrial minerals

LAND USE AND ENVIRONMENTAL SETTING



EXISTING OPERATIONS

- Use permit and reclamation plan to allow mining (1989)
- Mining operations typical of hard-rock mining
- Three material types encountered during mining:
 1. Overburden -
Stripped and placed in adjacent stockpile
 2. Cap rock -
Removed and placed in adjacent stockpile
Suitable construction aggregate
Minimum 100,000 tons/year processed and shipped off-site
 3. Hard rock -
Processed on-site and transported to adjacent granules plant
- Annual Average Production: 600,000 tons
- Water Source: private well and stormwater
- Facilities include processing equipment, maintenance shop, scale, and scalehouse



Quarry Expansion Land Use and Reclamation Plan

Kevin D. Moore Director Mine Planning and Capital



PROPOSED QUARRY EXPANSION

GOALS AND OBJECTIVES

- Expand reserves to extend the life of the mine.
- Expand mining byproduct stockpiles and storage on-site to support ongoing and continued mining.
- Secure access to a large and uniform rock reserve of sufficient quality to support production of roofing granules at the adjacent, separately permitted, roofing granules facility.
- Locate the project on property that SGI owns and near other necessary, separately permitted granules production and rail loadout facilities.
- Continue to support approximately 115 local jobs that provide an average living wage of \$81,951 for educated and skilled workers.
- Continue to provide property and sales tax revenue of approximately \$480,000 or more to the County.

LAND USE AND ENVIRONMENTAL SETTING

- Existing land use within expansion area:
 - Mining, stockpiling, material processing, and ancillary mining-related facilities
 - Solar array (5.25 kW)
 - Open space for grazing
- County land use designations:
 - General Plan: mineral resource zone (MRZ)
 - Zoning: single-family residential and agriculture (R1A)
- Surrounding land uses include:
 - SGI granule production facility (separately permitted from mine)
 - Open space and grazing
 - Mining and historic mining areas
 - Rural residential (closest residence approximately ¼ mile south)
 - State Route 104 and Amador Central Railroad

USE PERMIT AND RECLAMATION PLAN AMENDMENT

Project Description

- Expand quarry surface disturbance area and depth to access additional reserves.

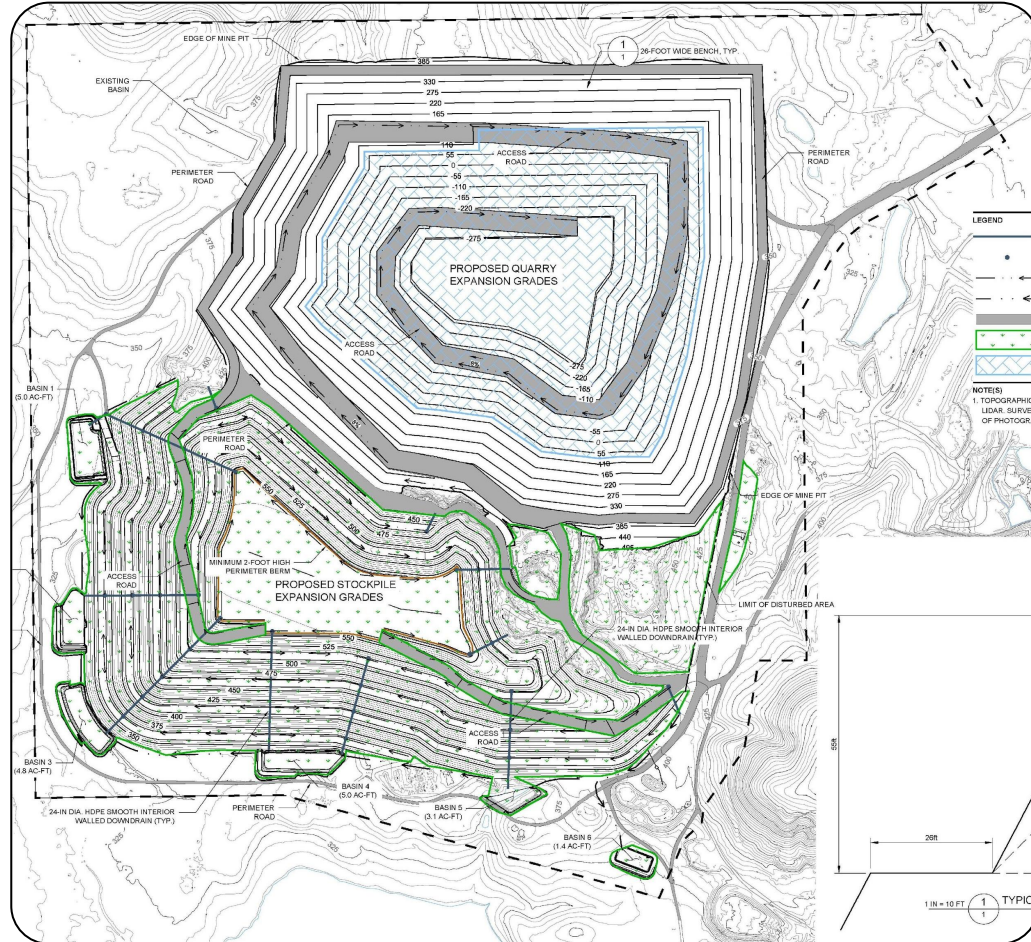
	QUARRY		STOCKPILE		ANCILLARY FACILITIES
	Acreage	Depth	Acreage	Final El.	Acreage
Existing	56	325 ft msl	34	515 ft msl	65
Proposed	136	-280 ft msl	86	560 ft msl	68

- Continued mining to support adjacent, separately permitted granule production facility.
- Modify existing stormwater detention facilities to accommodate quarry and stockpile expansion.
- Extend termination date of use permit to 2175.
- No changes in material removal or processing activities or increase in annual production.

Reclamation Plan

- Final land use objective open space, grazing and open water.
- All mobile equipment and ancillary facilities removed.
- Revegetation will include:
 - Stockpile and ancillary disturbance areas
 - Seed mix consistent with existing vegetation community
- Quarry reclamation:
 - Highwall/benches and primary internal access roads will not be revegetated
 - Bottom will fill with surface and groundwater to form lake
- Updated reclamation plan meets current SMARA standards.

PROPOSED FINAL CONFIGURATION



- Application package technical studies included:
 - Biological resources assessment
 - Geology and Soils
 - Wetland delineation
 - Hydrology and Water Quality
 - Slope stability analysis
 - Noise
 - Cultural Resources

