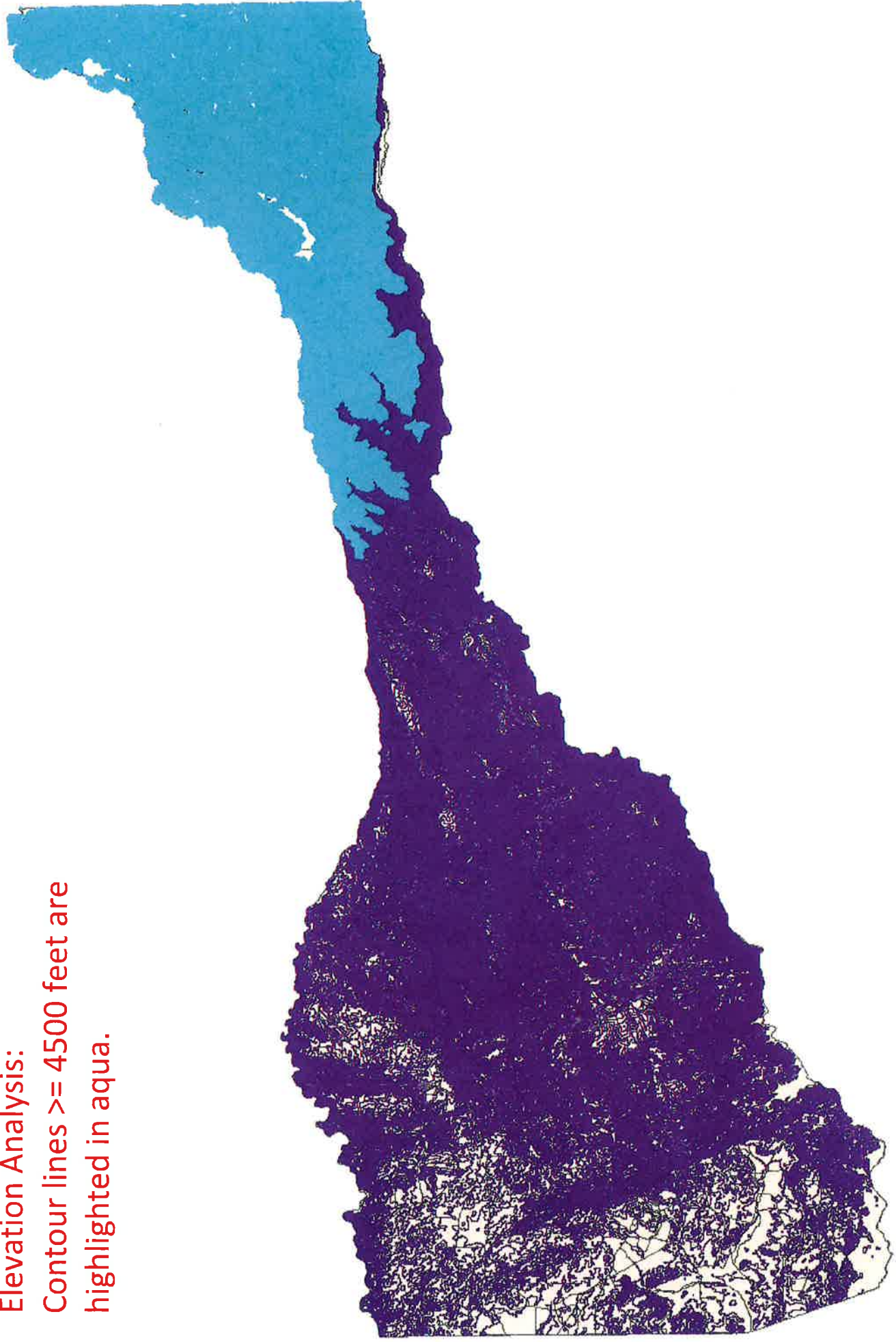
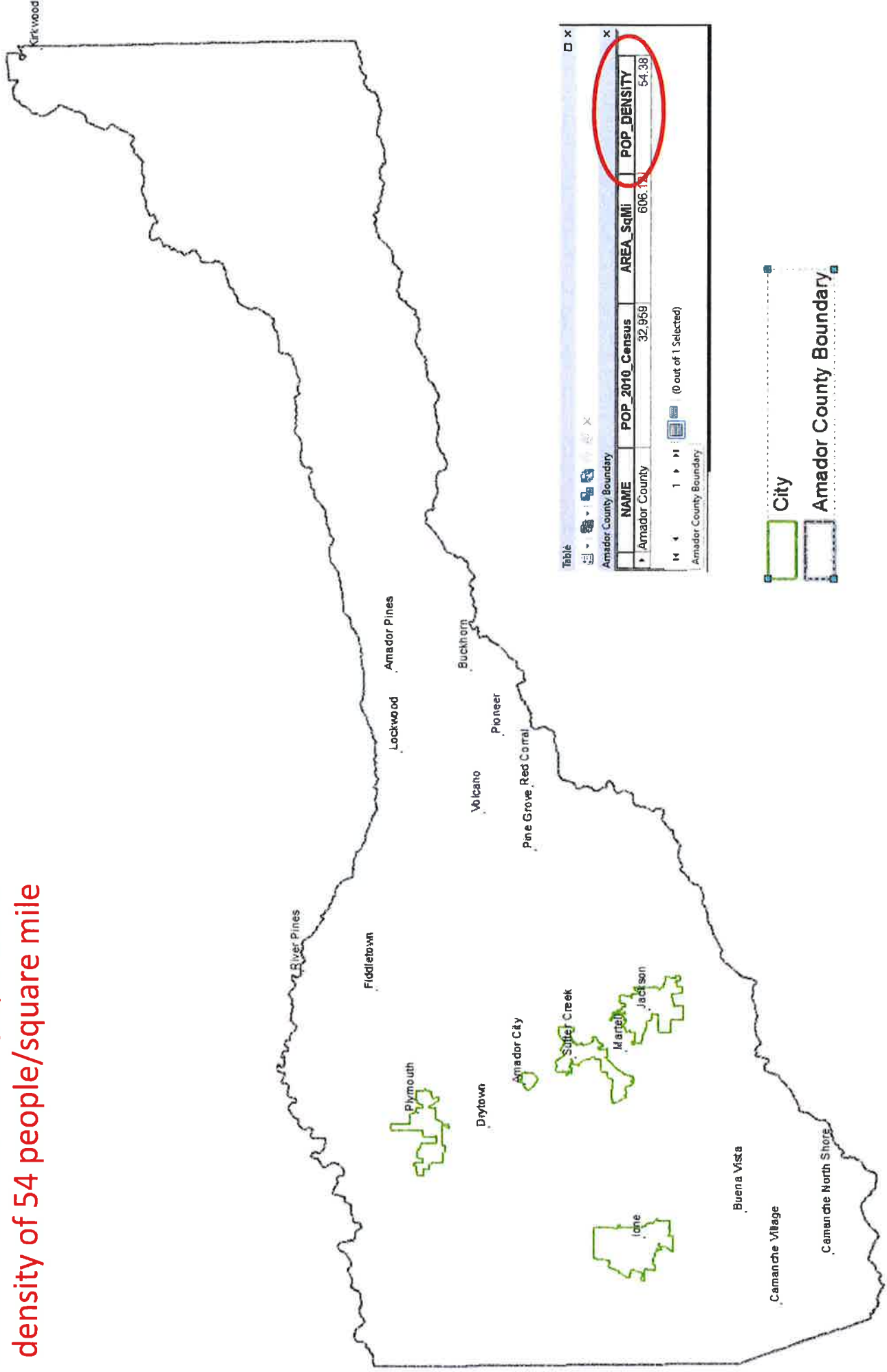


Elevation Analysis:  
Contour lines  $\geq$  4500 feet are  
highlighted in aqua.



Countywide Analysis:  
Amador County has a population  
density of 54 people/square mile



Table

Amador County Boundary

NAME	POP_2010_Census	AREA_SqMi	POP_DENSITY
Amador County	32,959	606.14	54.38

Amador County Boundary

Amador County Boundary

City

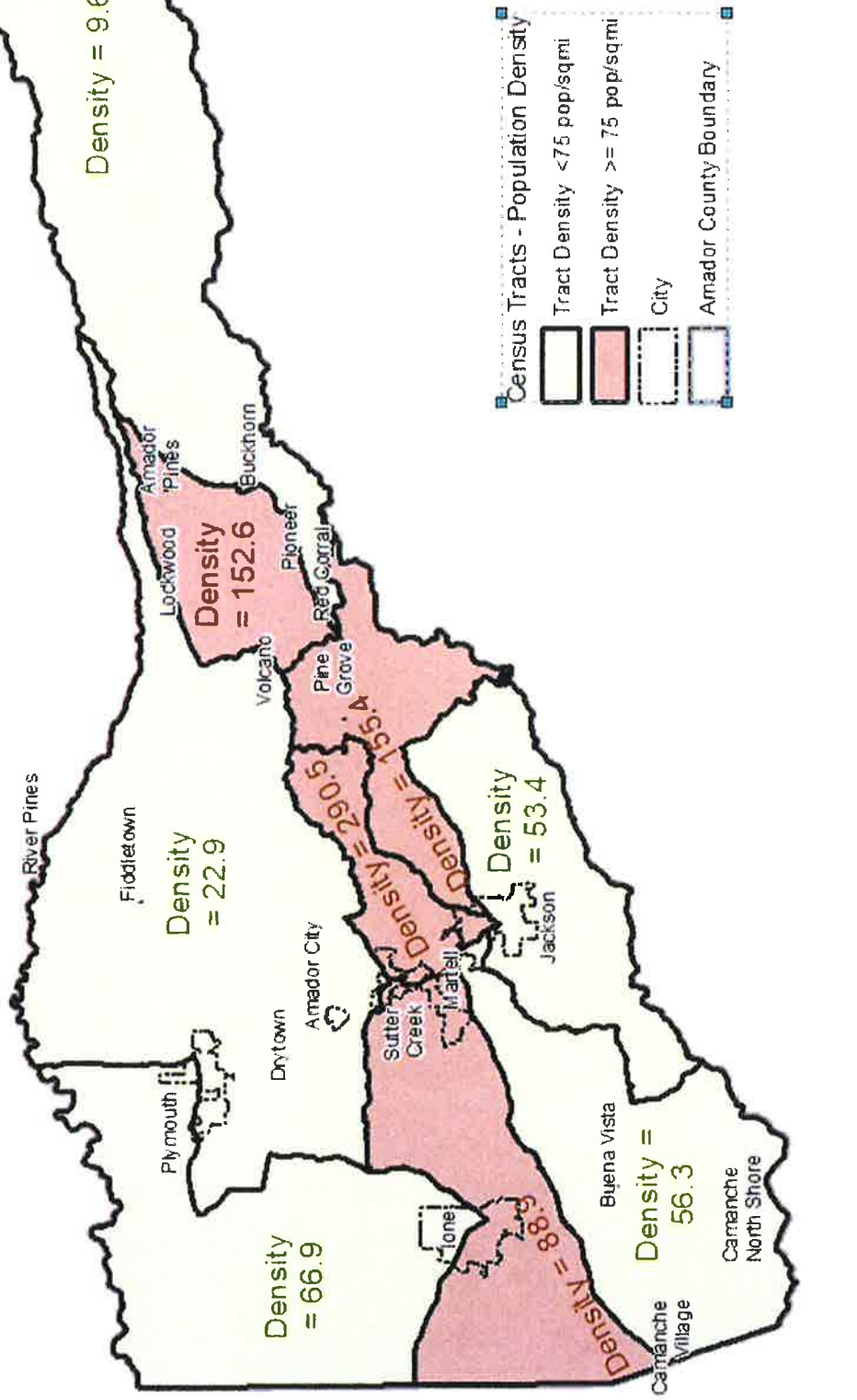
Amador County Boundary

Census Tract Level Analysis:  
 Four of the nine census tracts  
 in Amador County have a  
 population density greater  
 than 75 people/square mile

Table  
 Census Tracts - Population Density

TRACTID	Pop10	PopDensity	Area_SqMi
06005000102	1725	9.6	179.192962
06005000200	2859	22.9	124.8266
06005000500	2333	53.4	43.721044
06005000304	3417	56.3	60.685344
06005000301	5056	66.9	75.597749
06005000303	4702	88.9	52.906014
06005000101	3714	152.6	24.330831
06005000402	4395	155.4	28.285256
06005000401	4758	290.5	16.377592

(0 out of 9 Selected)





Census Block Level Analysis:  
628 of the 1396 census blocks  
in Amador County have a  
population density greater  
than 75 people/square mile

