

AMADOR COUNTY BOARD OF SUPERVISORS
COUNTY ADMINISTRATION CENTER
BOARD OF SUPERVISORS CHAMBERS
810 Court Street
Jackson, CA 95642

ANY UNVACCINATED INDIVIDUALS WHO WISH TO ATTEND THIS MEETING IN PERSON, ARE REQUIRED TO WEAR A MASK OR FACE SHIELD TO ENTER THE BUILDING AND THROUGHOUT THE DURATION OF THEIR ATTENDANCE AT THE MEETING. VACCINATED INDIVIDUALS ARE ENCOURAGED TO WEAR A FACE SHIELD OR MASK.

Anyone who wishes to address the Board must speak from the podium and should print their name on the Board Meeting Speaker list, which is located on the podium. The Clerk will collect the list at the end of the meeting. ****PLEASE NOTE, DUE TO COVID-19 SIGNING IN AT THE PODIUM HAS BEEN DISCONTINUED AT THIS TIME. PLEASE STATE YOUR NAME CLEARLY FOR THE RECORD.**** Public hearing items will commence no sooner than the times listed on the agenda. Closed Session agenda items may be heard before or after scheduled public hearings, dependent upon progression of the agenda.

DUE TO THE GOVERNOR'S EXECUTIVE ORDER N-25-20, THE AMADOR COUNTY BOARD OF SUPERVISORS WILL BE CONDUCTING ITS MEETING VIA TELECONFERENCE. WHILE THIS MEETING WILL STILL BE CONDUCTED IN-PERSON AT 810 COURT STREET, WE **STRONGLY ENCOURAGE THE PUBLIC TO PARTICIPATE FROM HOME BY CALLING IN USING THE FOLLOWING NUMBER:**

+1-669-900-6833 (alternate phone numbers listed on amadorgov.org)

Access Code: 758 573 6084#

YOU MAY ALSO VIEW AND PARTICIPATE IN THE MEETING USING THIS LINK:

<https://zoom.us/j/7585736084>

The Chairman will call the meeting to order and after Board input, will invite the public to comment via phone/online to receive public comment.

SPECIAL MEETING AGENDA

DATE: Tuesday, December 07, 2021
TIME: 10:30 AM
LOCATION: COUNTY ADMINISTRATION CENTER
BOARD OF SUPERVISORS CHAMBERS
810 Court Street
Jackson, CA 95642

CALL TO ORDER:

PLEDGE OF ALLEGIANCE:

PUBLIC MATTERS NOT ON THE AGENDA: Discussion items only, no action to be taken. Any person may address the Board at this time upon any subject within the jurisdiction of the Amador County Board of Supervisors; however, any matter that requires action may be referred to staff and/or Committee for a report and recommendation for possible action at a subsequent Board meeting. Please note - there is a three (3) minute limit per topic.

APPROVAL OF AGENDA: Approval of agenda for this date; any and all off-agenda items must be approved by the Board (pursuant to Government Code section 54954.2)

1. PUBLIC HEARING: **10:30 A.M.**

- 1.a. Redistricting (Census 2020): A public hearing to receive an update from staff and/or the Advisory Committee, review and discuss draft maps, if available, to receive continued public input, and to provide direction as may be needed relative to the setting of district boundaries for Supervisorial Districts I, II, III, IV and V based upon population as determined by the 2020 census. This is the fourth of four mandatory public hearings. The final maps will be set by resolution prior to December 15, 2021.

Suggested Action: Discussion and direction to staff as desired.

[BOS memo.Redistricting hearing.12-07-21.docx.pdf](#)

[11-30-21_BA.pdf](#)

[11-30-21_BA_Population Summary.pdf](#)

[faxe_ba2.pdf](#)

[faxe_ba2_Population Summary.pdf](#)

[11-24-21_RF.pdf](#)

[11-24-21_RF_Population Summary.pdf](#)

[11-24-21_RF_V2.pdf](#)

[11-24-21_RF_V2_Population Summary.pdf](#)

ADJOURNMENT: UNTIL TUESDAY, DECEMBER 14, 2021 AT 9:00 A.M. (CLOSED SESSION BEGINS AT 8:30 A.M.)

In compliance with the Americans with Disabilities Act, if you are a disabled person and you need a disability-related modification or accommodation to participate in this meeting, please contact the Clerk of the Board staff, at (209) 223-6470 or (209) 257-0619 (fax). Requests must be made as early as possible and at least one-full business day before the start of the meeting. Assisted hearing devices are available in the Board Chambers for public use during all public meetings. Pursuant to Government Code 54957.5, all materials relating to an agenda item for an open session of a regular meeting of the Board of Supervisors which are provided to a majority or all of the members of the Board by Board members, staff or the public within 72 hours of but prior to the meeting will be available for public inspection, at and after the time of such distribution, in the office of the Clerk of the Board of Supervisors, 810 Court Street, Jackson, California 95642, Monday through Friday, between the hours of 8:00 a.m. and 5:00 p.m., except for County holidays. Materials distributed to a majority or all of the members of the Board at the meeting will be available for public inspection at the public meeting if prepared by the members of the Board or County staff and after the public meeting if prepared by some other person. Availability of materials related to agenda items for public inspection does not include materials that are exempt from public disclosure under Government Code sections 6253.5, 6254, 6254.3, 6254.7, 6254.15, 6254.16, or 6254.22.

Board of Supervisors Agenda Item Report

Submitting Department: Board of Supervisors

Meeting Date: December 7, 2021

SUBJECT

Redistricting (Census 2020): A public hearing to receive an update from staff and/or the Advisory Committee, review and discuss draft maps, if available, to receive continued public input, and to provide direction as may be needed relative to the setting of district boundaries for Supervisorial Districts I, II, III, IV and V based upon population as determined by the 2020 census. This is the fourth of four mandatory public hearings. The final maps will be set by resolution prior to December 15, 2021.

Recommendation:

Discussion and direction to staff as desired.

4/5 vote required:

No

Distribution Instructions:

Redistricting Committee, File

ATTACHMENTS

- [BOS memo.Redistricting hearing.12-07-21.docx.pdf](#)
- [11-30-21_BA.pdf](#)
- [11-30-21_BA_Population Summary.pdf](#)
- [faxe_ba2.pdf](#)
- [faxe_ba2_Population Summary.pdf](#)
- [11-24-21_RF.pdf](#)
- [11-24-21_RF_Population Summary.pdf](#)
- [11-24-21_RF_V2.pdf](#)
- [11-24-21_RF_V2_Population Summary.pdf](#)



AMADOR COUNTY COMMUNITY DEVELOPMENT AGENCY
PLANNING DEPARTMENT

PHONE: (209) 223-6380

FAX: (209) 257-5002

WEBSITE: www.amadorgov.org

EMAIL: planning@amadorgov.org

COUNTY ADMINISTRATION CENTER • 810 COURT STREET • JACKSON, CA 95642-2132

MEMO

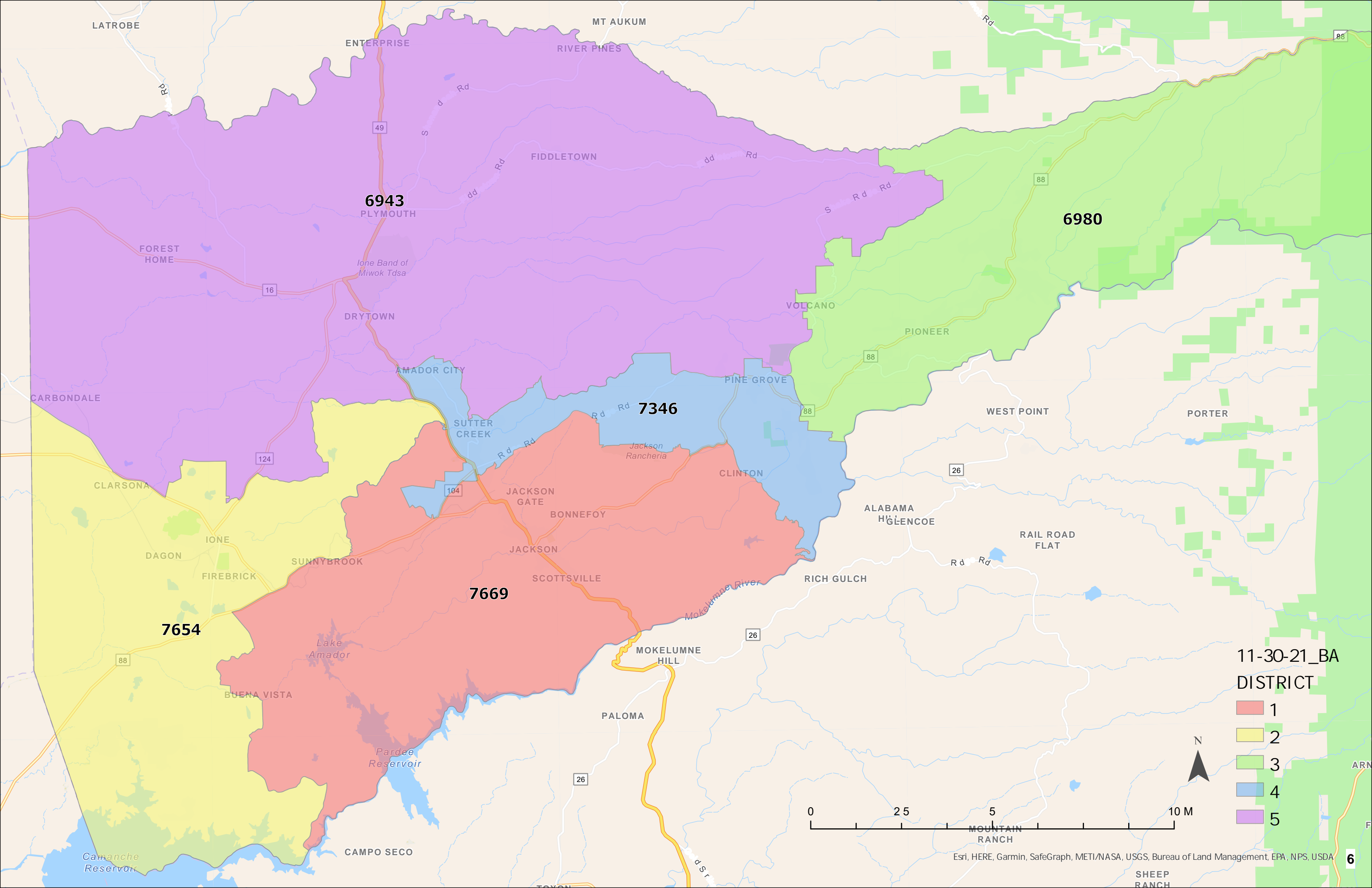
TO: BOARD OF SUPERVISORS
FROM: CHUCK BEATTY, PLANNING DIRECTOR
DATE: DECEMBER 1, 2021
RE: PUBLIC HEARING ON SUPERVISORIAL REDISTRICTING MAPS

The Fair And Inclusive Redistricting for Municipalities And Political Subdivisions (FAIR MAPS) Act requires that the County adjust the boundaries of the supervisorial districts so that they are substantially equal in population based on the most recent federal decennial census. Up to 10% variation in district population is acceptable based on existing case law. Amador County's 2020 population of 36,592, divided among five districts, averages 7,318. A 10% variation from least populated to most populated district places the acceptable range between 6,952 and 7,684. Additionally, district boundaries are to be drawn using the criteria below in order of priority:

- (1) To the extent practicable, supervisorial districts shall be geographically contiguous. Areas that meet only at the points of adjoining corners are not contiguous. Areas that are separated by water and not connected by a bridge, tunnel, or regular ferry service are not contiguous;
- (2) To the extent practicable, the geographic integrity of any local neighborhood or local community of interest shall be respected in a manner that minimizes its division. A "community of interest" is a population that shares common social or economic interests that should be included within a single supervisorial district for purposes of its effective and fair representation. Communities of interest do not include relationships with political parties, incumbents, or political candidates;
- (3) To the extent practicable, the geographic integrity of a city or census designated place shall be respected in a manner that minimizes its division;
- (4) Supervisorial district boundaries should be easily identifiable and understandable by residents. To the extent practicable, supervisorial districts shall be bounded by natural and artificial barriers, by streets, or by the boundaries of the county;
- (5) To the extent practicable, and where it does not conflict with the preceding criteria in this subdivision, supervisorial districts shall be drawn to encourage geographical compactness in a manner that nearby areas of population are not bypassed in favor of more distant populations.

To assist with the redrawing of supervisorial districts, the Redistricting Advisory Committee identified over 80 potential communities of interest which were used to help create a variety of potential supervisorial district configurations. Ultimately, the Board chose to pursue revised districts which met the above criteria, and also minimized change from the current (2010) districts to the extent possible.

Included in the Board's agenda packet are four draft supervisorial district maps prepared by a combination of members of the Redistricting Advisory Committee and Board of Supervisors. These maps will be discussed during the public hearing scheduled for 10:30 am, Tuesday, December 7, 2021. A final draft map should be selected by the Board and published on the County's website for seven days prior to being adopted (tentatively scheduled for December 14, 2021). The final map must be set by resolution by December 15, 2021.



6943
PLYMOUTH

6980

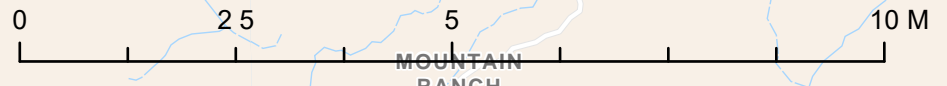
7346

7669

7654

11-30-21_BA
DISTRICT

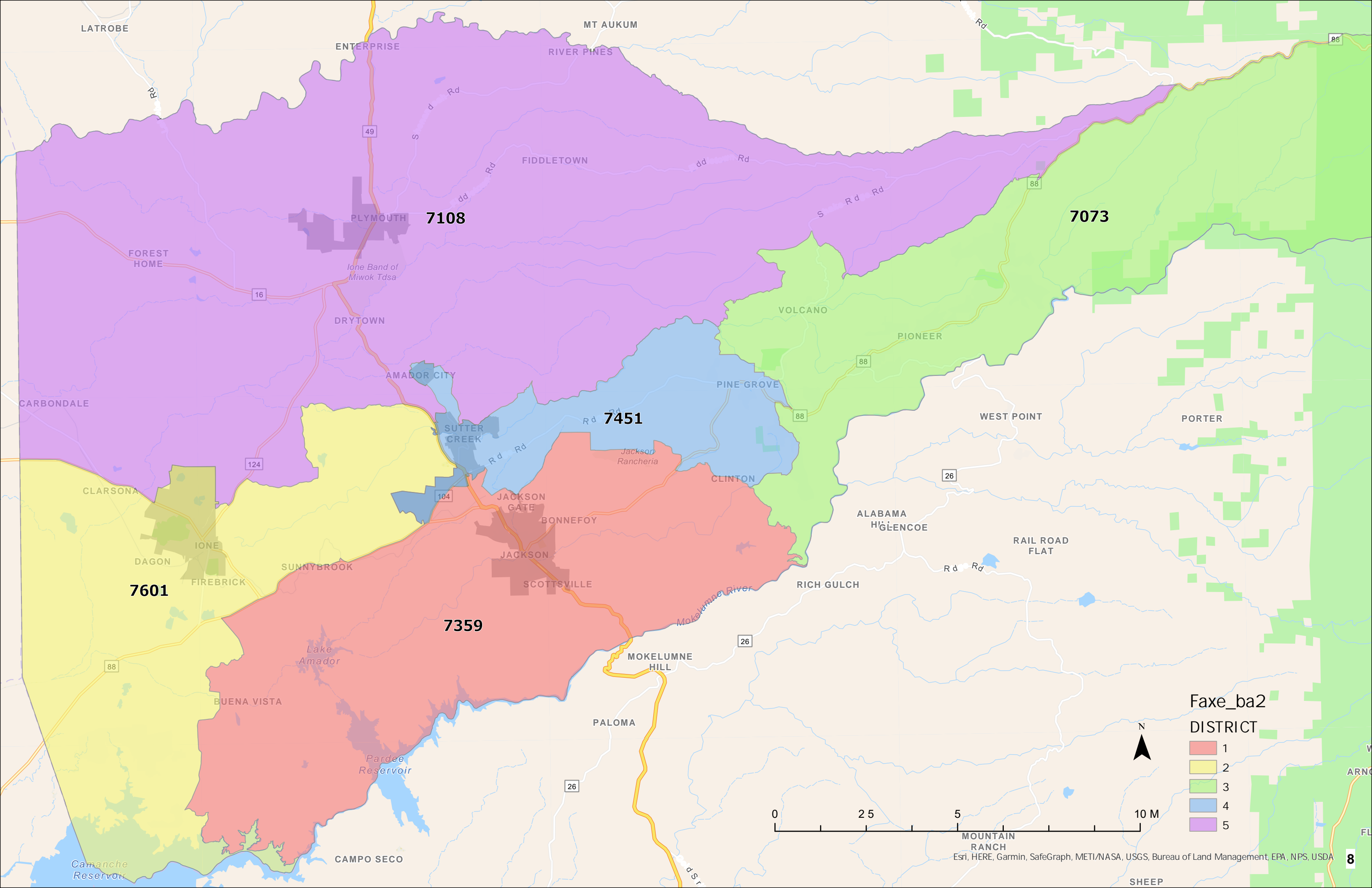
- 1
- 2
- 3
- 4
- 5



Population Summary Report

District No.	TOTAL Population	Target Population	Target Deviation	Target Deviation (%)	Non-Hispanic/Latino White	Hispanic or Latino	Non-Hispanic/Latino Black	Non-Hispanic/Latino Asian	Non-Hispanic/Latino Other race	Total	Total voting age
D1	7,669	7,318	351	4.80	5,726	1,156	64	120	37	7,669	6,232
D2	7,654	7,318	336	4.59	5,731	1,175	58	116	35	7,654	5,945
D3	6,980	7,318	-338	-4.62	5,607	685	51	81	50	6,980	6,006
D4	7,346	7,318	28	0.38	5,822	784	39	105	48	7,346	6,106
D5	6,943	7,318	-375	-5.12	5,403	916	51	82	59	6,943	5,871

TOTAL Population:	36,592
Mean Target Population:	7,318
Mean Deviation:	286
Mean Percent Deviation:	3.90
Largest Positive Deviation:	351
Largest Negative Deviation:	-375
Overall Range in Deviation:	726
Overall Range in Deviation Percentage:	9.92



Faxe_ba2
DISTRICT

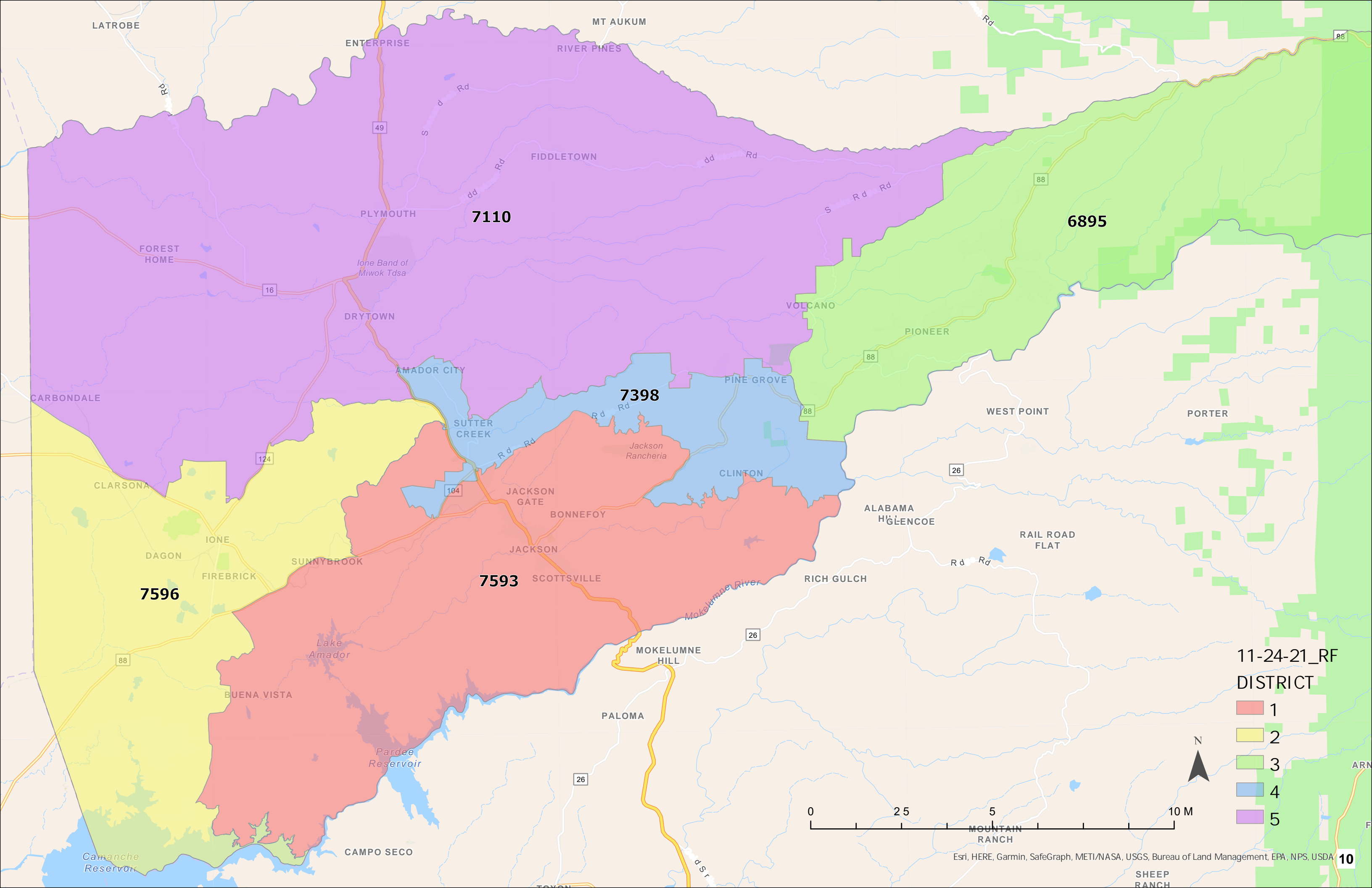
- 1
- 2
- 3
- 4
- 5



Population Summary Report

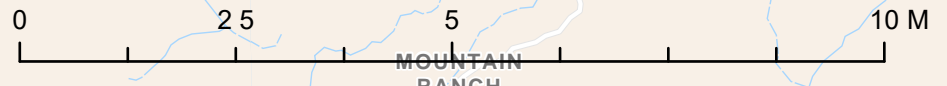
District No.	TOTAL Population	Target Population	Target Deviation	Target Deviation (%)	Non-Hispanic/Latino White	Hispanic or Latino	Non-Hispanic/Latino Black	Non-Hispanic/Latino Asian	Non-Hispanic/Latino Other race	Total	Total voting age
D1	7,359	7,318	41	0.56	5,446	1,123	66	119	37	7,359	5,975
D2	7,601	7,318	283	3.87	5,703	1,164	55	114	35	7,601	5,898
D3	7,073	7,318	-245	-3.35	5,676	692	55	80	58	7,073	6,054
D4	7,451	7,318	133	1.82	5,899	821	40	116	47	7,451	6,202
D5	7,108	7,318	-210	-2.87	5,565	916	47	75	52	7,108	6,031

TOTAL Population:	36,592
Mean Target Population:	7,318
Mean Deviation:	182
Mean Percent Deviation:	2.49
Largest Positive Deviation:	283
Largest Negative Deviation:	-245
Overall Range in Deviation:	528
Overall Range in Deviation Percentage:	7.22



11-24-21_RF
DISTRICT

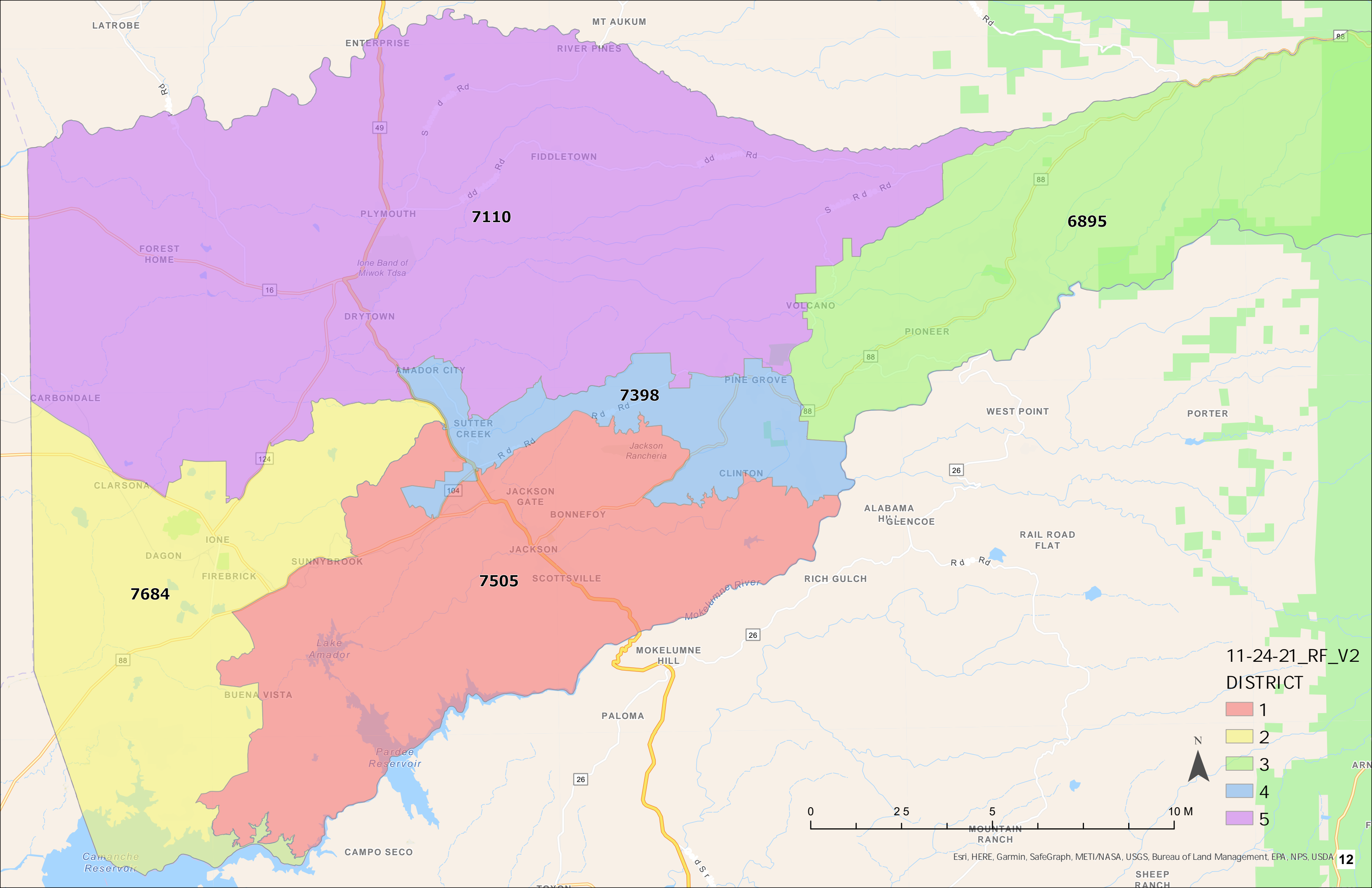
- 1
- 2
- 3
- 4
- 5



Population Summary Report

District No.	TOTAL Population	Target Population	Target Deviation	Target Deviation (%)	Non-Hispanic/Latino White	Hispanic or Latino	Non-Hispanic/Latino Black	Non-Hispanic/Latino Asian	Non-Hispanic/Latino Other race	Total	Total voting age
D1	7,593	7,318	275	3.76	5,622	1,160	64	130	36	7,593	6,171
D2	7,596	7,318	278	3.80	5,699	1,162	55	114	35	7,596	5,898
D3	6,895	7,318	-423	-5.78	5,542	679	51	78	49	6,895	5,927
D4	7,398	7,318	80	1.09	5,881	789	42	97	49	7,398	6,144
D5	7,110	7,318	-208	-2.84	5,545	926	51	85	60	7,110	6,020

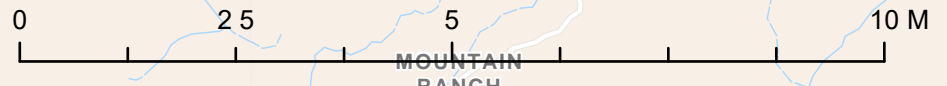
TOTAL Population:	36,592
Mean Target Population:	7,318
Mean Deviation:	253
Mean Percent Deviation:	3.45
Largest Positive Deviation:	278
Largest Negative Deviation:	-423
Overall Range in Deviation:	701
Overall Range in Deviation Percentage:	9.58



11-24-21_RF_V2

DISTRICT

- 1
- 2
- 3
- 4
- 5



Population Summary Report

District No.	TOTAL Population	Target Population	Target Deviation	Target Deviation (%)	Non-Hispanic/Latino White	Hispanic or Latino	Non-Hispanic/Latino Black	Non-Hispanic/Latino Asian	Non-Hispanic/Latino Other race	Total	Total voting age
D1	7,505	7,318	187	2.56	5,562	1,144	61	127	36	7,505	6,102
D2	7,684	7,318	366	5.00	5,759	1,178	58	117	35	7,684	5,967
D3	6,895	7,318	-423	-5.78	5,542	679	51	78	49	6,895	5,927
D4	7,398	7,318	80	1.09	5,881	789	42	97	49	7,398	6,144
D5	7,110	7,318	-208	-2.84	5,545	926	51	85	60	7,110	6,020

TOTAL Population:	36,592
Mean Target Population:	7,318
Mean Deviation:	253
Mean Percent Deviation:	3.45
Largest Positive Deviation:	366
Largest Negative Deviation:	-423
Overall Range in Deviation:	789
Overall Range in Deviation Percentage:	10.78