

LATROBE

MT AUKUM

ENTERPRISE

RIVER PINES

6943

PLYMOUTH

6980

FOREST HOME

DRYTOWN

VOLCANO

PIONEER

CARBONDALE

AMADOR CITY

PINE GROVE

7346

WEST POINT

PORTER

CLARSONA

SUTTER CREEK

CLINTON

DAGON

IONE

SUNNYBROOK

JACKSON GATE

BONNEFOY

ALABAMA

HIGHENCOE

RAIL ROAD FLAT

FIREBRICK

JACKSON

SCOTTSVILLE

RICH GULCH

7654

BUENA VISTA

7669

MOKELUMNE HILL

PALOMA

Lake Amador

Pardee Reservoir

Mokelumne River

N

11-30-21_BA

DISTRICT

- 1
- 2
- 3
- 4
- 5

0 2.5 5 10 Miles

MOUNTAIN RANCH

Esri, HERE, Garmin, SafeGraph, METI/NASA, USGS, Bureau of Land Management, EPA, NPS, USDA

SHEEP RANCH

Camanche Reservoir

CAMPO SECO

Gold Strike

ARN

F

Population Summary Report

District No.	TOTAL Population	Target Population	Target Deviation	Target Deviation (%)	Non-Hispanic/Latino White	Hispanic or Latino	Non-Hispanic/Latino Black	Non-Hispanic/Latino Asian	Non-Hispanic/Latino Other race	Total	Total voting age
D1	7,669	7,318	351	4.80	5,726	1,156	64	120	37	7,669	6,232
D2	7,654	7,318	336	4.59	5,731	1,175	58	116	35	7,654	5,945
D3	6,980	7,318	-338	-4.62	5,607	685	51	81	50	6,980	6,006
D4	7,346	7,318	28	0.38	5,822	784	39	105	48	7,346	6,106
D5	6,943	7,318	-375	-5.12	5,403	916	51	82	59	6,943	5,871

TOTAL Population:	36,592
Mean Target Population:	7,318
Mean Deviation:	286
Mean Percent Deviation:	3.90
Largest Positive Deviation:	351
Largest Negative Deviation:	-375
Overall Range in Deviation:	726
Overall Range in Deviation Percentage:	9.92

All Districts Summary Report

District No.	D1
Total Population	7,669
Total Population 18+	6,232
Deviation	351
Dev. %	4.796

	Total Hispanic	Total Not Hispanic or Latino	Hispanic or Latino	Non-Hispanic/Latino White	Non-Hispanic/Latino Black	Non-Hispanic/Latino American Indian/Alaskan Native	Non-Hispanic/Latino Asian	Non-Hispanic/Latino Hawaiian or Other Pacific Islander	Non-Hispanic/Latino Other race	Non-Hispanic/Latino Two or more races
Total	1,156	413	1,156	5,726	64	144	120	9	37	413
Total%	15.07	5.39	15.07	74.66	0.83	1.88	1.56	0.12	0.48	5.39
Total18+	772	5,460	772	4,875	53	102	94	8	31	5,460
Total18+%	12.39	87.61	12.39	78.23	0.85	1.64	1.51	0.13	0.50	87.61

District No.	D2
Total Population	7,654
Total Population 18+	5,945
Deviation	336
Dev. %	4.591

	Total Hispanic	Total Not Hispanic or Latino	Hispanic or Latino	Non-Hispanic/Latino White	Non-Hispanic/Latino Black	Non-Hispanic/Latino American Indian/Alaskan Native	Non-Hispanic/Latino Asian	Non-Hispanic/Latino Hawaiian or Other Pacific Islander	Non-Hispanic/Latino Other race	Non-Hispanic/Latino Two or more races
Total	1,175	420	1,175	5,731	58	101	116	18	35	420
Total%	15.35	5.49	15.35	74.88	0.76	1.32	1.52	0.24	0.46	5.49
Total18+	787	5,158	787	4,613	50	79	95	13	27	5,158
Total18+ ^c	13.24	86.76	13.24	77.59	0.84	1.33	1.60	0.22	0.45	86.76

District No.	D3
Total Population	6,980
Total Population 18+	6,006
Deviation	-338
Dev. %	-4.619

	Total Hispanic	Total Not Hispanic or Latino	Hispanic or Latino	Non-Hispanic/Latino White	Non-Hispanic/Latino Black	Non-Hispanic/Latino American Indian/Alaskan Native	Non-Hispanic/Latino Asian	Non-Hispanic/Latino Hawaiian or Other Pacific Islander	Non-Hispanic/Latino Other race	Non-Hispanic/Latino Two or more races
Total	685	405	685	5,607	51	87	81	14	50	405
Total%	9.81	5.80	9.81	80.33	0.73	1.25	1.16	0.20	0.72	5.80
Total18+	496	5,510	496	4,956	43	72	75	13	44	5,510
Total18+ ^c	8.26	91.74	8.26	82.52	0.72	1.20	1.25	0.22	0.73	91.74

District No.	D4
--------------	----

District No.	D4
---------------------	-----------

Total Population 7,346

Total Population 18+ 6,106

Deviation 28

Dev. % 0.383

	Total Hispanic	Total Not Hispanic or Latino	Hispanic or Latino	Non-Hispanic/ Latino White	Non-Hispanic/ Latino Black	Non-Hispanic/ Latino American Indian/Alaskan Native	Non-Hispanic/ Latino Asian	Non-Hispanic/ Latino Hawaiian or Other Pacific Islander	Non-Hispanic/ Latino Other race	Non-Hispanic/ Latino Two or more races
Total	784	430	784	5,822	39	105	105	13	48	430
Total%	10.67	5.85	10.67	79.25	0.53	1.43	1.43	0.18	0.65	5.85
Total18+	547	5,559	547	4,985	35	73	89	10	38	5,559
Total18+%	8.96	91.04	8.96	81.64	0.57	1.20	1.46	0.16	0.62	91.04

District No.	D5
---------------------	-----------

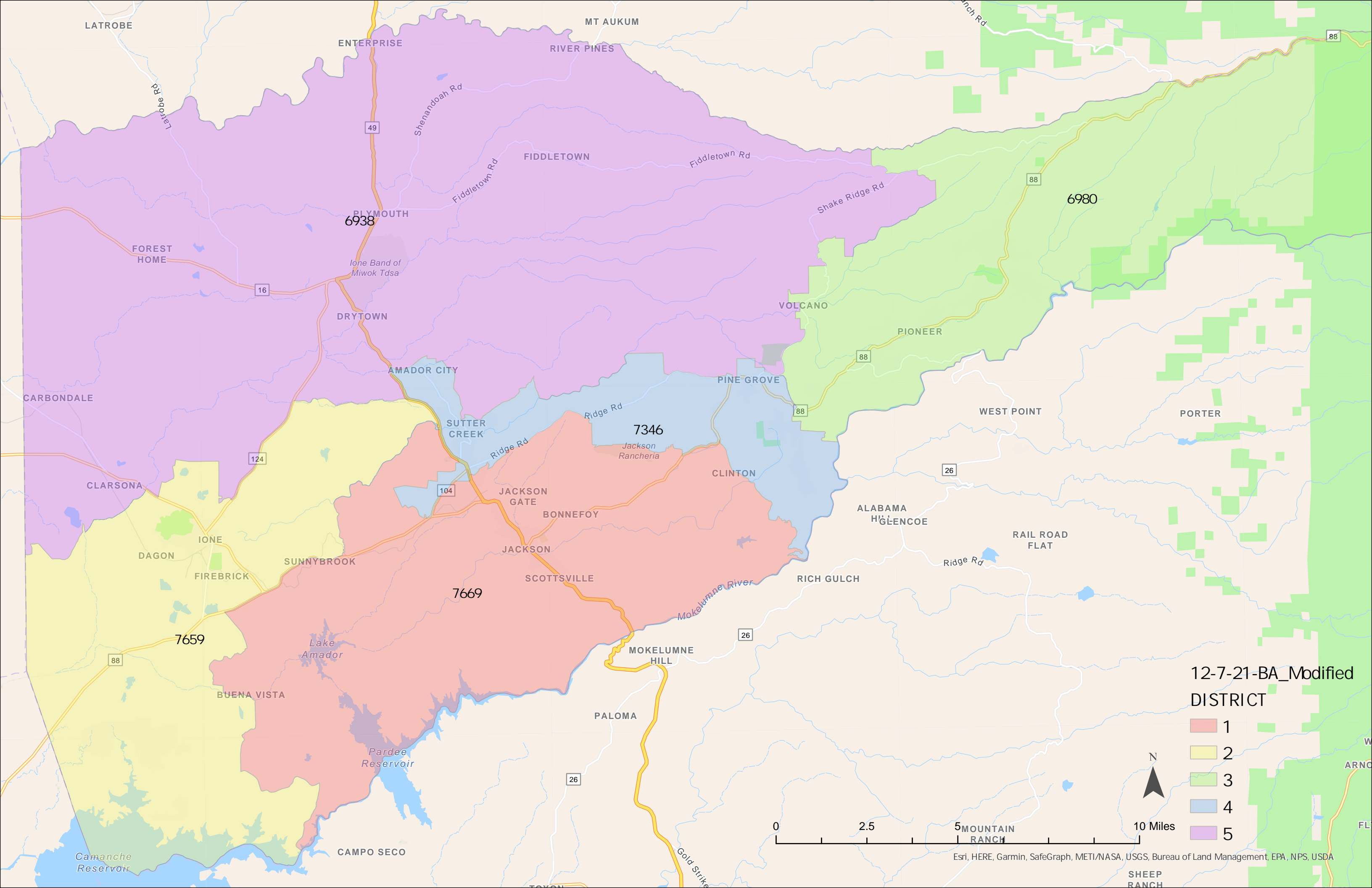
Total Population 6,943

Total Population 18+ 5,871

Deviation -375

Dev. % -5.124

	Total Hispanic	Total Not Hispanic or Latino	Hispanic or Latino	Non-Hispanic/ Latino White	Non-Hispanic/ Latino Black	Non-Hispanic/ Latino American Indian/Alaskan Native	Non-Hispanic/ Latino Asian	Non-Hispanic/ Latino Hawaiian or Other Pacific Islander	Non-Hispanic/ Latino Other race	Non-Hispanic/ Latino Two or more races
Total	916	343	916	5,403	51	75	82	14	59	343
Total%	13.19	4.94	13.19	77.82	0.73	1.08	1.18	0.20	0.85	4.94
Total18+	643	5,228	643	4,714	44	60	74	6	58	5,228
Total18+%	10.95	89.05	10.95	80.29	0.75	1.02	1.26	0.10	0.99	89.05



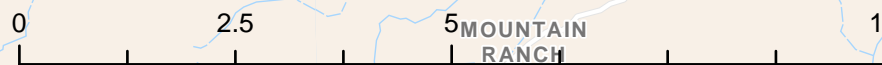
12-7-21-BA_Modified

DISTRICT

- 1
- 2
- 3
- 4
- 5



10 Miles



Population Summary Report

District No.	TOTAL Population	Target Population	Target Deviation	Target Deviation (%)	Non-Hispanic/Latino White	Hispanic or Latino	Non-Hispanic/Latino Black	Non-Hispanic/Latino Asian	Non-Hispanic/Latino Other race	Total	Total voting age
D1	7,669	7,318	351	4.80	5,726	1,156	64	120	37	7,669	6,232
D2	7,659	7,318	341	4.66	5,735	1,176	58	116	35	7,659	5,956
D3	6,980	7,318	-338	-4.62	5,607	685	51	81	50	6,980	6,006
D4	7,346	7,318	28	0.38	5,822	784	39	105	48	7,346	6,106
D5	6,938	7,318	-380	-5.19	5,399	915	51	82	59	6,938	5,860

TOTAL Population:	36,592
Mean Target Population:	7,318
Mean Deviation:	288
Mean Percent Deviation:	3.93
Largest Positive Deviation:	351
Largest Negative Deviation:	-380
Overall Range in Deviation:	731
Overall Range in Deviation Percentage:	9.99

All Districts Summary Report

District No. D1

Total Population	7,669
Total Population 18+	6,232
Deviation	351
Dev. %	4.796

	Total Hispanic	Total Not Hispanic or Latino	Hispanic or Latino	Non-Hispanic/Latino White	Non-Hispanic/Latino Black	Non-Hispanic/Latino American Indian/Alaskan Native	Non-Hispanic/Latino Asian	Non-Hispanic/Latino Hawaiian or Other Pacific Islander	Non-Hispanic/Latino Other race	Non-Hispanic/Latino Two or more races
Total	1,156	413	1,156	5,726	64	144	120	9	37	413
Total%	15.07	5.39	15.07	74.66	0.83	1.88	1.56	0.12	0.48	5.39
Total18+	772	5,460	772	4,875	53	102	94	8	31	5,460
Total18+%	12.39	87.61	12.39	78.23	0.85	1.64	1.51	0.13	0.50	87.61

District No. D2

Total Population	7,659
Total Population 18+	5,956
Deviation	341
Dev. %	4.66

	Total Hispanic	Total Not Hispanic or Latino	Hispanic or Latino	Non-Hispanic/Latino White	Non-Hispanic/Latino Black	Non-Hispanic/Latino American Indian/Alaskan Native	Non-Hispanic/Latino Asian	Non-Hispanic/Latino Hawaiian or Other Pacific Islander	Non-Hispanic/Latino Other race	Non-Hispanic/Latino Two or more races
Total	1,176	420	1,176	5,735	58	101	116	18	35	420
Total%	15.35	5.48	15.35	74.88	0.76	1.32	1.51	0.24	0.46	5.48
Total18+	789	5,167	789	4,620	50	79	95	13	27	5,167
Total18+ ^c	13.25	86.75	13.25	77.57	0.84	1.33	1.60	0.22	0.45	86.75

District No.	D3
Total Population	6,980
Total Population 18+	6,006
Deviation	-338
Dev. %	-4.619

	Total Hispanic	Total Not Hispanic or Latino	Hispanic or Latino	Non-Hispanic/Latino White	Non-Hispanic/Latino Black	Non-Hispanic/Latino American Indian/Alaskan Native	Non-Hispanic/Latino Asian	Non-Hispanic/Latino Hawaiian or Other Pacific Islander	Non-Hispanic/Latino Other race	Non-Hispanic/Latino Two or more races
Total	685	405	685	5,607	51	87	81	14	50	405
Total%	9.81	5.80	9.81	80.33	0.73	1.25	1.16	0.20	0.72	5.80
Total18+	496	5,510	496	4,956	43	72	75	13	44	5,510
Total18+ ^c	8.26	91.74	8.26	82.52	0.72	1.20	1.25	0.22	0.73	91.74

District No.	D4
--------------	----

District No.	D4
---------------------	-----------

Total Population 7,346

Total Population 18+ 6,106

Deviation 28

Dev. % 0.383

	Total Hispanic	Total Not Hispanic or Latino	Hispanic or Latino	Non-Hispanic/ Latino White	Non-Hispanic/ Latino Black	Non-Hispanic/ Latino American Indian/Alaskan Native	Non-Hispanic/ Latino Asian	Non-Hispanic/ Latino Hawaiian or Other Pacific Islander	Non-Hispanic/ Latino Other race	Non-Hispanic/ Latino Two or more races
Total	784	430	784	5,822	39	105	105	13	48	430
Total%	10.67	5.85	10.67	79.25	0.53	1.43	1.43	0.18	0.65	5.85
Total18+	547	5,559	547	4,985	35	73	89	10	38	5,559
Total18+%	8.96	91.04	8.96	81.64	0.57	1.20	1.46	0.16	0.62	91.04

District No.	D5
---------------------	-----------

Total Population 6,938

Total Population 18+ 5,860

Deviation -380

Dev. % -5.193

	Total Hispanic	Total Not Hispanic or Latino	Hispanic or Latino	Non-Hispanic/Latino White	Non-Hispanic/Latino Black	Non-Hispanic/Latino American Indian/Alaskan Native	Non-Hispanic/Latino Asian	Non-Hispanic/Latino Hawaiian or Other Pacific Islander	Non-Hispanic/Latino Other race	Non-Hispanic/Latino Two or more races
Total	915	343	915	5,399	51	75	82	14	59	343
Total%	13.19	4.94	13.19	77.82	0.74	1.08	1.18	0.20	0.85	4.94
Total18+	641	5,219	641	4,707	44	60	74	6	58	5,219
Total18+%	10.94	89.06	10.94	80.32	0.75	1.02	1.26	0.10	0.99	89.06