

AMADOR COUNTY TAX COLLECTOR

**2022 TAX SALE PARCELS
(MAY 16-18, 2022)**

ASSESSOR'S PARCEL MAPS

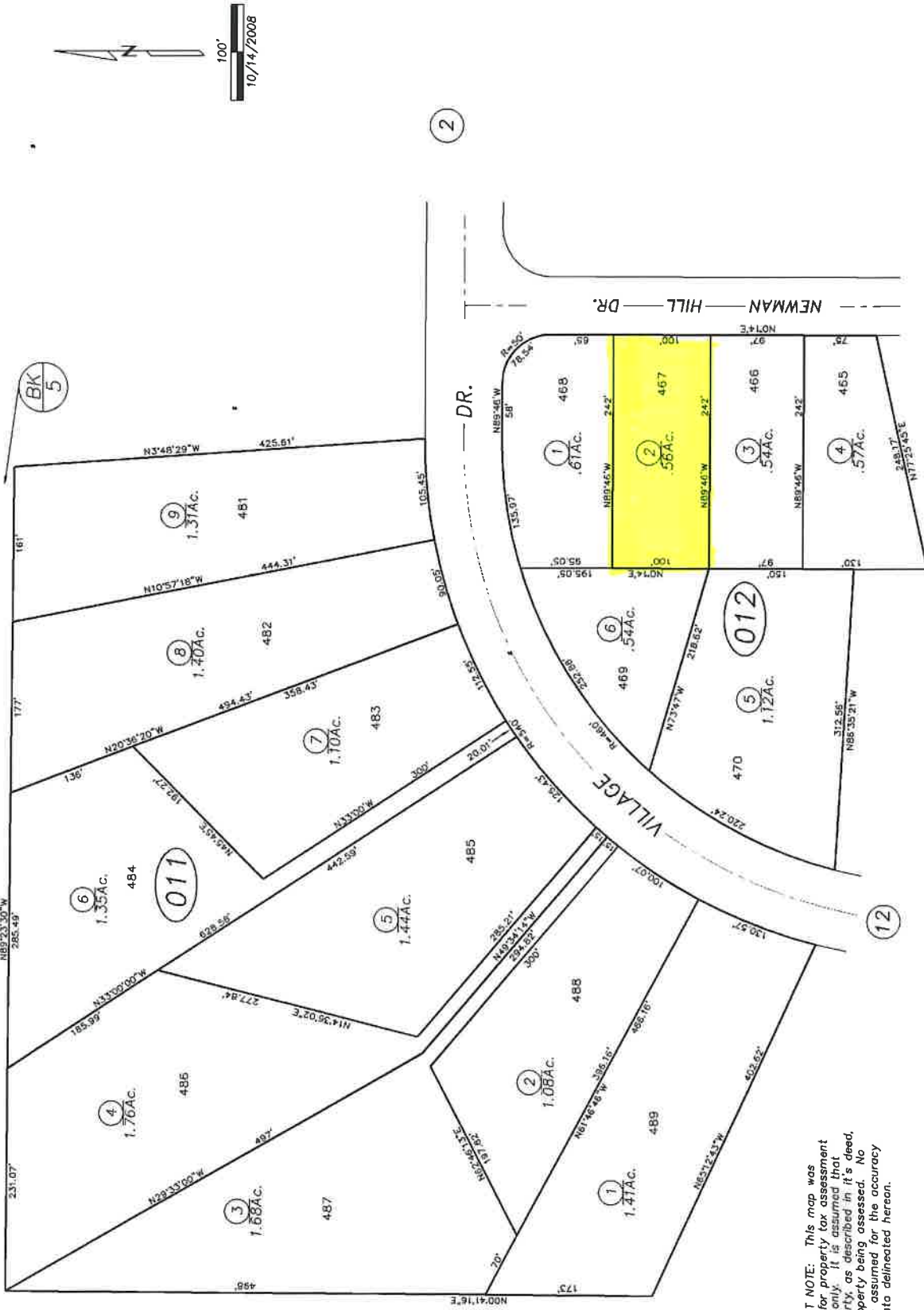
Provided by:



PARCELQUEST

POR. SEC. 21., T.5N., R.9E., M.D.B.&M.

3-01



IMPORTANT NOTE: This map was prepared for property tax assessment purposes only. It is assumed that the property, as described in it's deed, is the property being assessed. No liability is assumed for the accuracy of the data delineated hereon.

NOTE—Assessor's Block Numbers Shown in Ellipses. Assessor's Parcel Numbers Shown in Circles.

Assessor's Map Bk. 3, Pg. 01
County of Amador, Calif.

R.M. Bk.3, Sub. Pg.8—Lake Camanche Village Unit No.1

48

2

12

BK 5

Provided by:

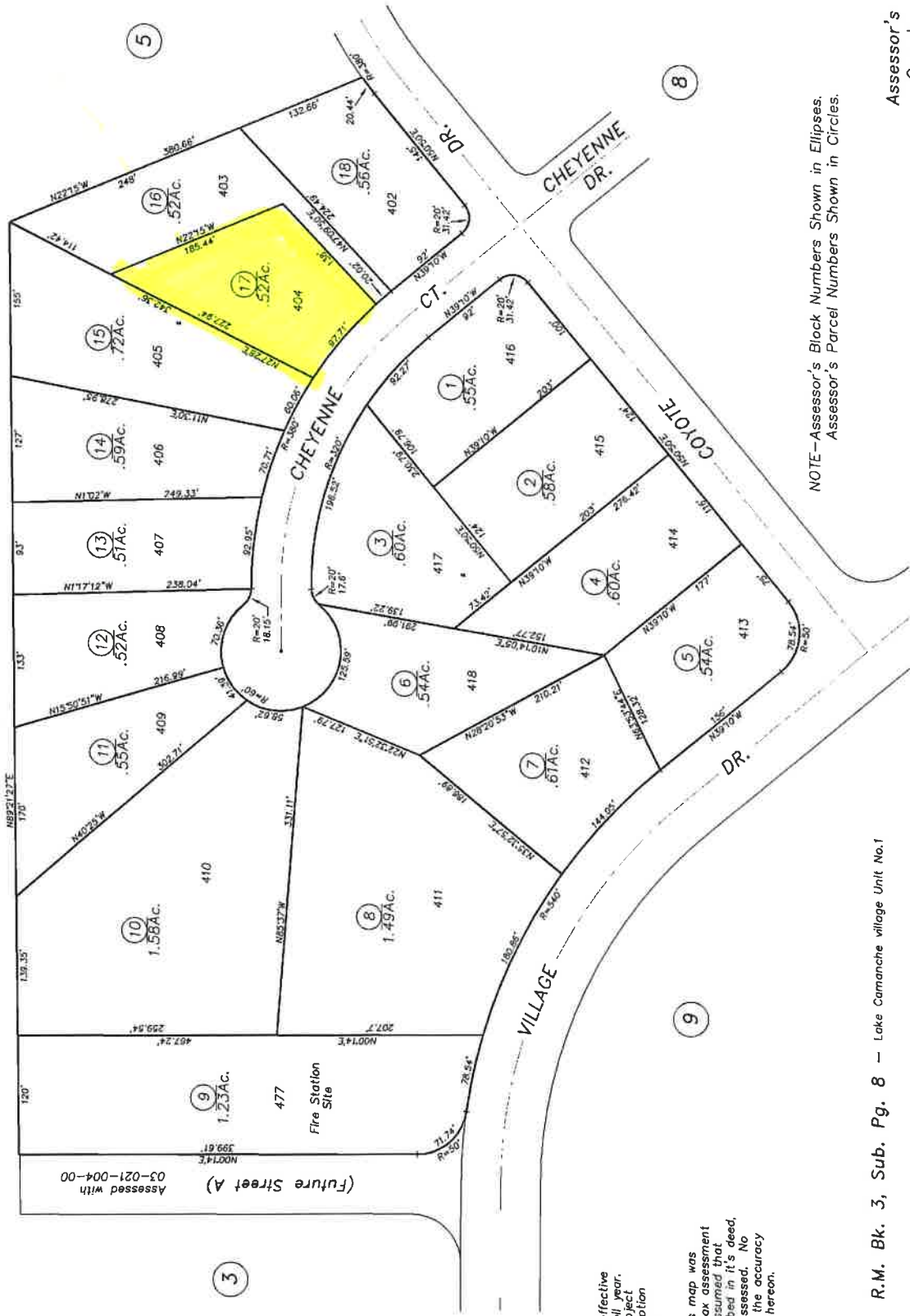


POR. SEC. 22, T.5N, R.9E, M.D.B.&M.

Tax Area Code
52-038

3-04

Bk
5



Map changes become effective with the 2005-2006 roll year. Parcel numbers are subject to change prior to adoption of roll on each July 1.

IMPORTANT NOTE: This map was prepared for property tax assessment purposes only. It is assumed that the property is as described in its deed. No liability is assumed for the accuracy of the data delineated hereon.

NOTE-Assessor's Block Numbers Shown in Ellipses.
Assessor's Parcel Numbers Shown in Circles.

R.M. Bk. 3, Sub. Pg. 8 - Lake Camanche village Unit No.1

Assessor's Map Bk. 3, Pg. 04
County of Amador, Calif.

Provided by:

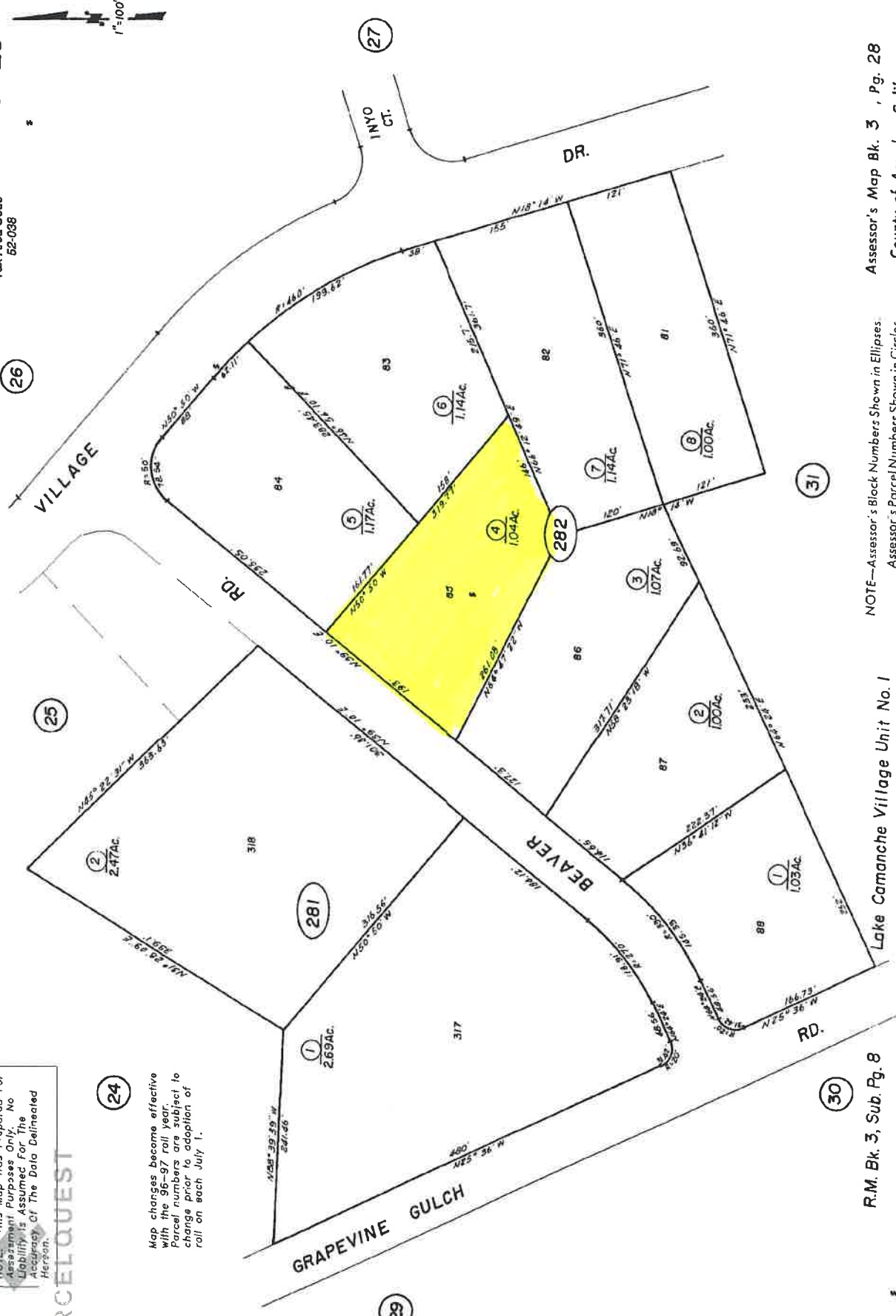
NOTE: This Map Was Prepared For Assessment Purposes Only. No Liability Is Assumed For The Accuracy Of The Data Delineated Hereon.

PARCELOQUEST

POR. SEC. 22, T.5N., R.9E., M.D.B. 8 M.

Tax Area Code 52-038

3-28



Map changes become effective with the 96-97 roll year. Parcel numbers are subject to change prior to adoption of roll on each July 1.

R.M. Bk. 3, Sub. Pg. 8

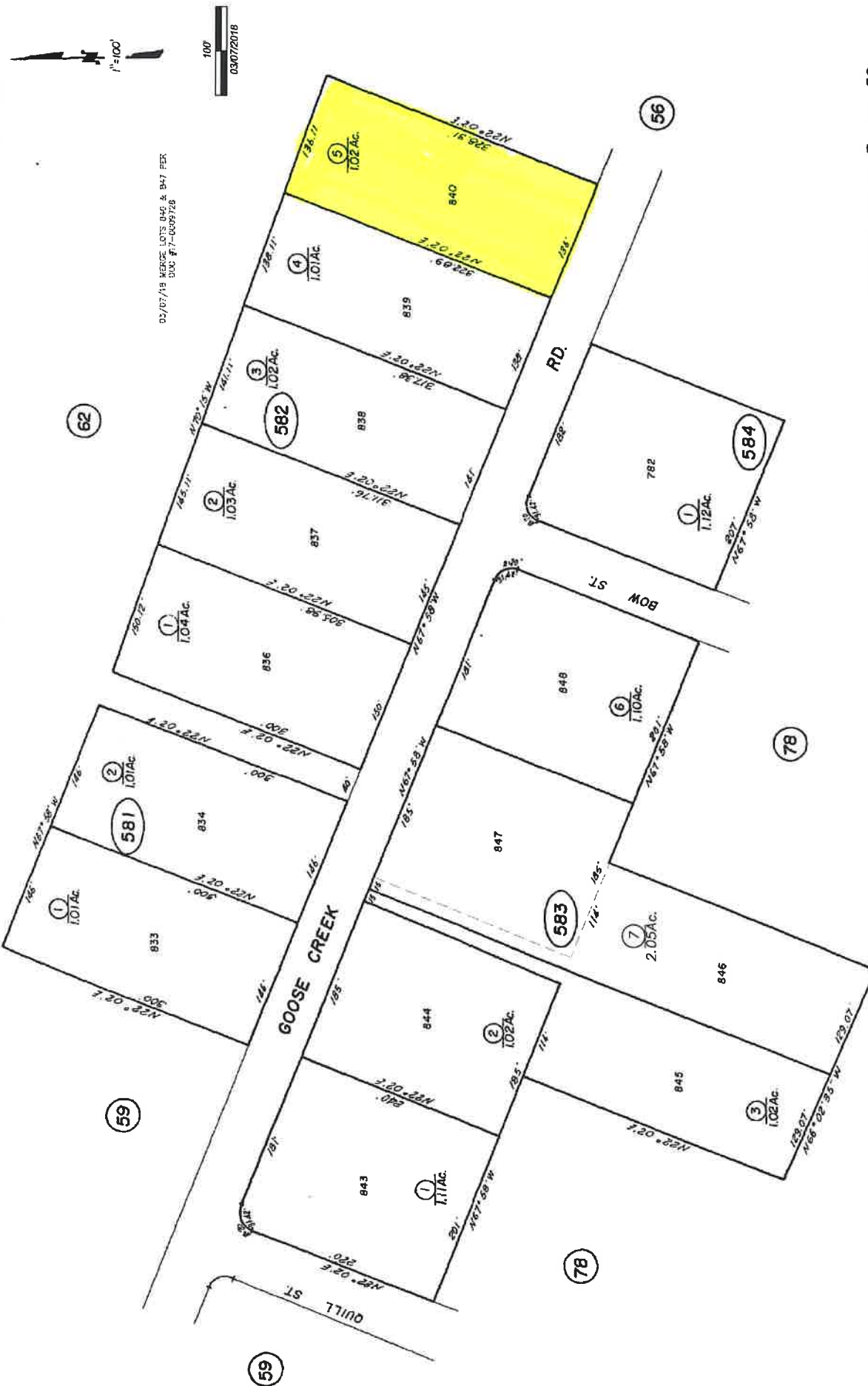
Lake Camanche Village Unit No. 1

NOTE—Assessor's Block Numbers Shown in Ellipses. Assessor's Parcel Numbers Shown in Circles.

Assessor's Map Bk. 3, Pg. 28
County of Amador, Calif.

POR. SEC. 21 & 28, T.5N., R.9E., M.D.B. & M.

3-58



NOTE—Assessor's Block Numbers Shown in Ellipses.
Assessor's Parcel Numbers Shown in Circles.

R.M. Bk. 3, Sub. Pg. 37 - Lake Camanche Village Unit No. 3A

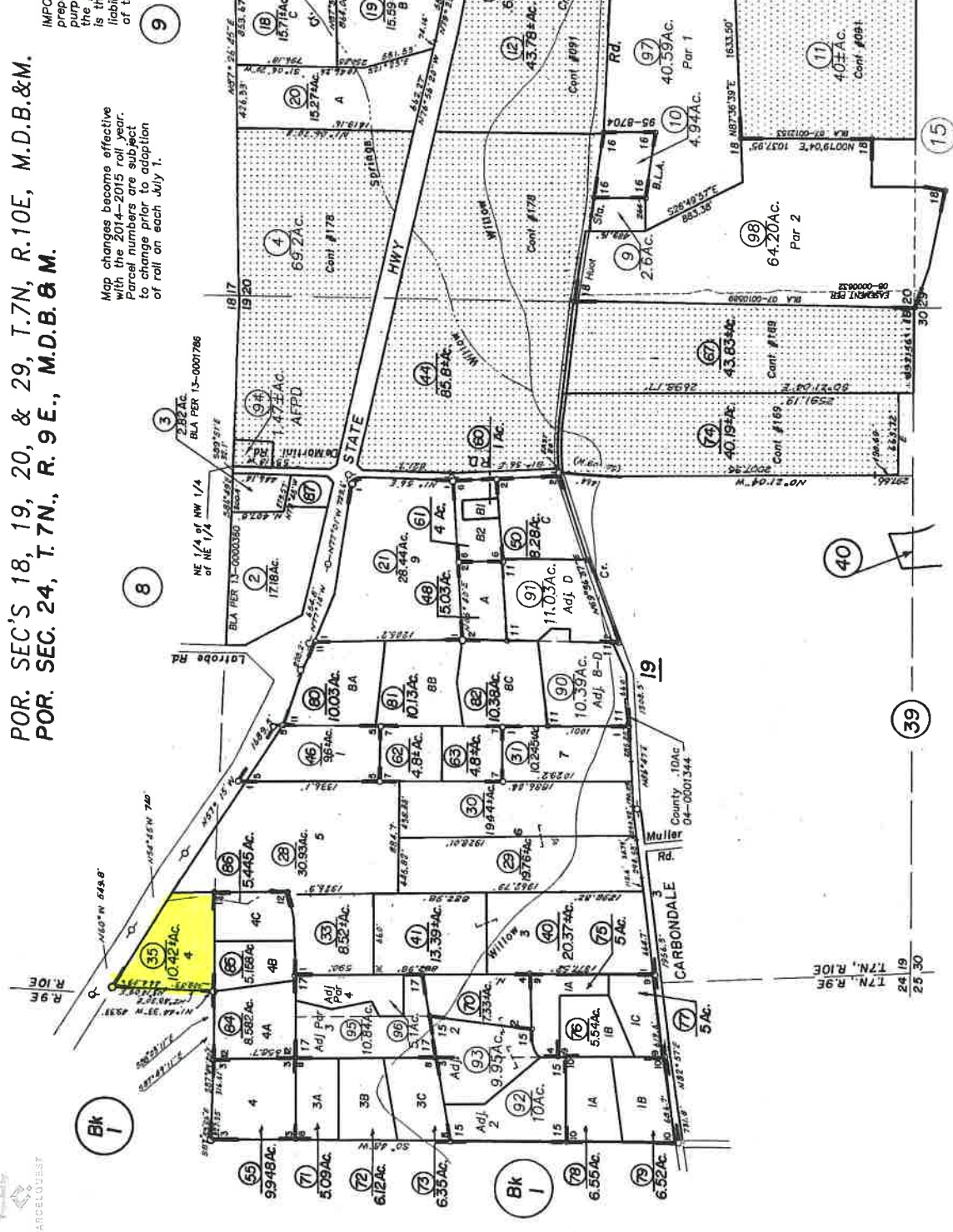
Assessor's Map Bk. 3, Pg. 58
County of Amador, Calif.

POR. SEC'S 18, 19, 20, & 29, T.7N, R.10E, M.D.B.&M.
 POR. SEC. 24, T.7N., R.9E., M.D.B.&M.

8-12

IMPORTANT NOTE: This map was prepared for property tax assessment purposes only. It is assumed that the property, as described in it's deed, is the property being assessed. No liability is assumed for the accuracy of the data delineated hereon.

Map changes become effective with the 2014-2015 roll year. Changes are subject to change prior to adoption of roll on each July 1.



Assessor's Map Bk. 8, Pg. 12
 County of Amador, Calif.

- 1- R.M. Bk. 17, Pg. 2
- 1- R.M. Bk. 14, Pg. 6
- 2- R.M. Bk. 20, Pg. 1
- 3- R.M. Bk. 21, Pg. 56
- 4- R.M. Bk. 21, Pg. 56
- 5- R.M. Bk. 21, Pg. 88
- 6- R.M. Bk. 23, Pg. 8
- 7- R.M. Bk. 23, Pg. 30
- 8- R.M. Bk. 25, Pg. 41
- 9- R.M. Bk. 25, Pg. 63
- 10- R.M. Bk. 25, Pg. 73
- 11- R.M. Bk. 26, Pg. 31
- 12- R.M. Bk. 27, Pg. 17
- 13- R.M. Bk. 45, Pg. 36 (1/19/90)
- 14- R.M. Bk. 47, Pg. 24 (12/17/85)
- 15- R.M. Bk. 47, Pg. 62 (6/28/94)
- 16- R.M. Bk. 49, Pg. 44 (11/17/85)
- 17- R.M. Bk. 54, Pg. 80 (6/21/2002)
- 18- R.M. Bk. 60, Pg. 44 (1/28/2008)

Provided by:

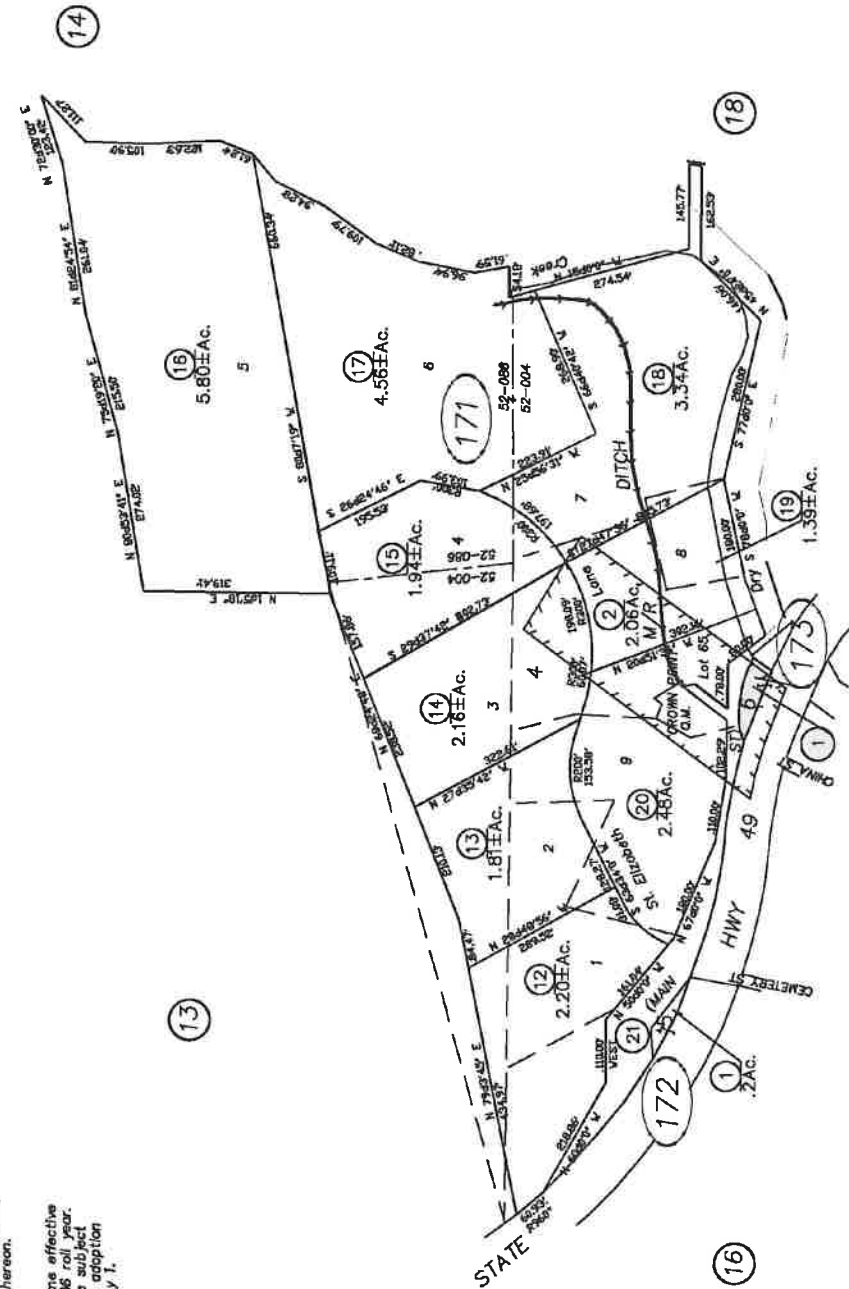
POR SEC 22 & 23, T.7N., R.10E., M.D.B. & M.

8-17

IMPORTANT NOTE: This map was prepared for property tax assessment purposes only as described in it. No liability is assumed for the accuracy of the data delineated hereon.

Map changes became effective with the 2005-2006 roll year. Parcel numbers are subject to change prior to adoption of roll on each July 1.

PARCELS



Townsite of Drytown
R.M.Bk. 27, Pg.64
R.M.Bk. 56, Pg.60 (3/22/2004)

(21)

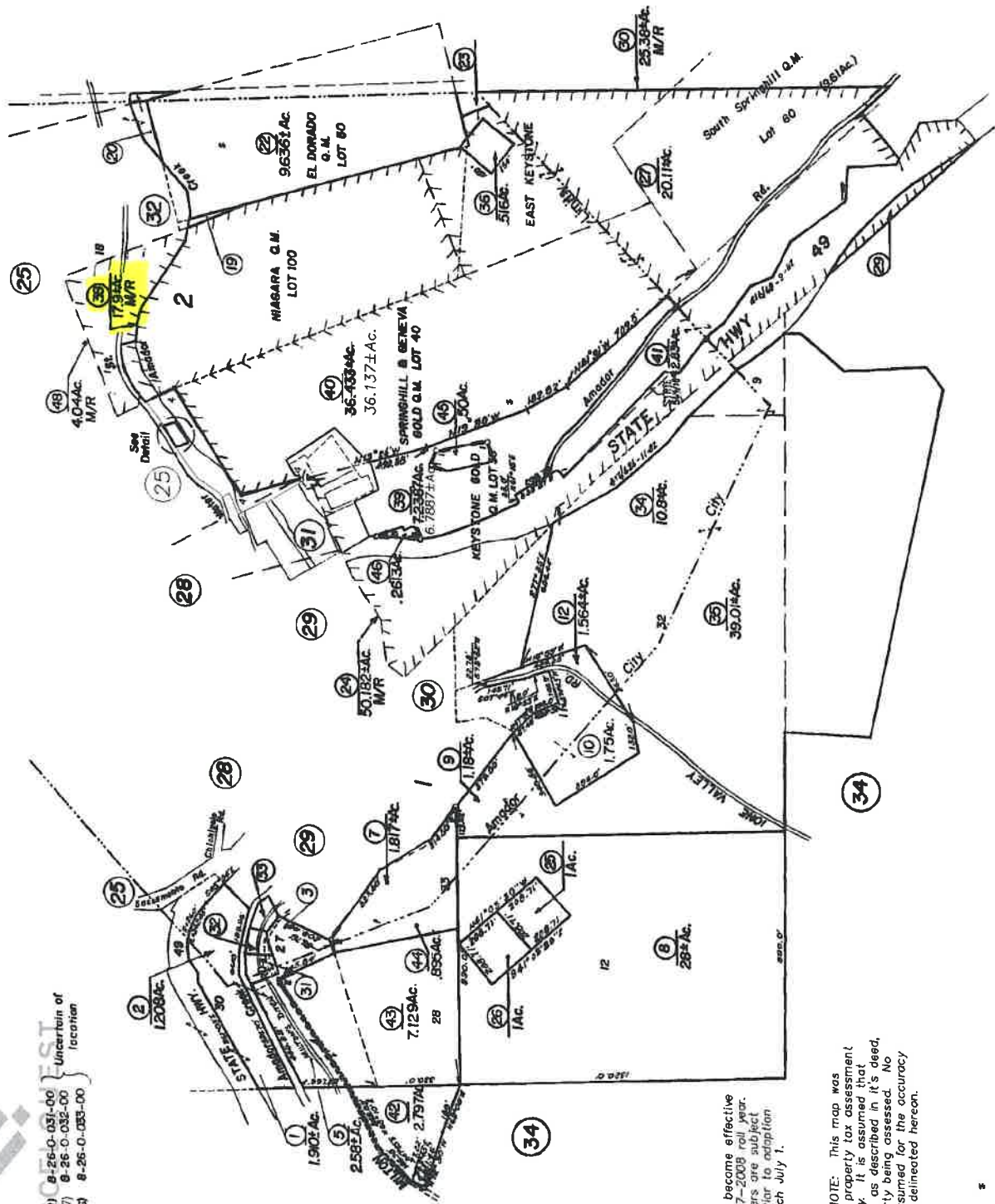
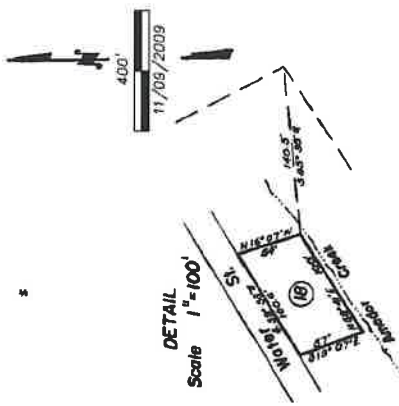
Assessor's Map Bk.08, Pg.17
County of Amador, Calif.

Provided by:

PARCELQUEST
(52 022) 8-26-0-037-00 } Uncertain of
(316262 - 100487) 8-26-0-032-00 } location
(320266) 8-26-0-033-00 }

POR. SEC. 36, T.7 N., R.10 E., M.D.B. & M.

8-26



15
21

- R.M. Bk. 3, Pg. 15
- R.M. Bk. 28, Pg. 97
- R.M. Bk. 34, Pg. 52
- 1-R.M. Bk. 41, Pg. 52
- 2-R.M. Bk. 41, Pg. 87
- 4-P.M. Bk. 58, Pg. 79 (4/28/2006)

(48)

**Assessor's Map Bk. 8 , Pg. 26
County of Amador, Calif.**

Map changes become effective with the 2007-2008 roll year. Parcel numbers are subject to change prior to adoption or roll on each July 1.

IMPORTANT NOTE: This map was prepared for property tax assessment purposes only. It is assumed that the property, as described in it's deed, is the property being assessed. No liability is assumed for the accuracy of the data delineated hereon.

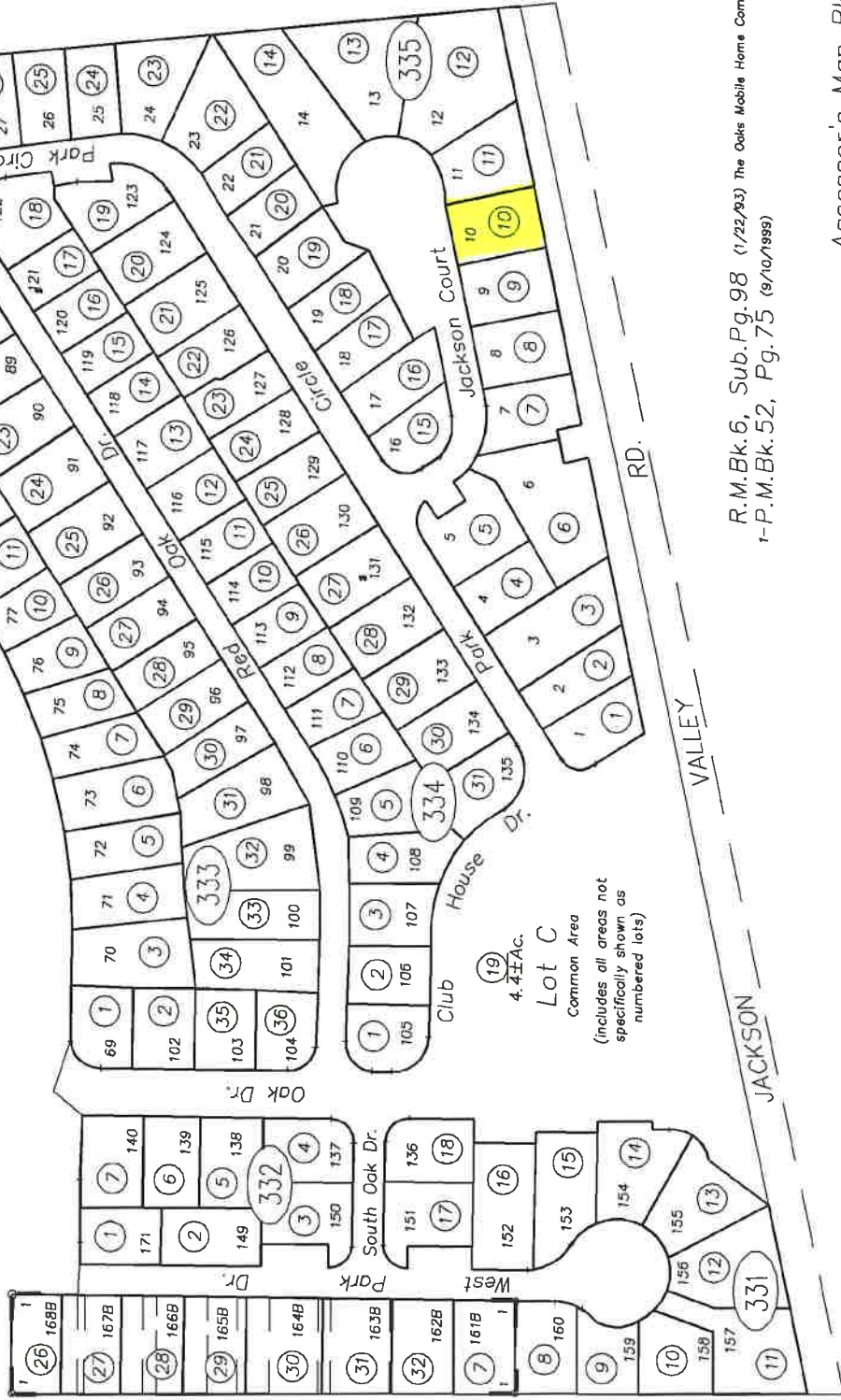
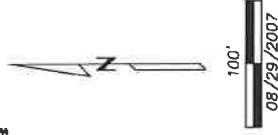
Provided by:

POR. RANCHO ARROYO SECO
POR. T.5N., R.10E., M.D.B. & M.

12-33

PARCEL
IMPORTANT NOTE: This map was prepared for property tax assessment purposes only. It is assumed that the property, as described in its deed, is the property being assessed. No liability is assumed for the accuracy of the data delineated herein.

Map changes become effective with the 2008-2009 roll year. Parcel numbers are subject to change prior to adoption of roll on each July 1.



R.M.Bk.6, Sub.Pg.98 (1/22/93) The Oaks Mobile Home Community
T-P.M.Bk.52, Pg.75 (9/10/1999)

Assessor's Map Bk.12, Pg.33
County of Amador, Calif.

NOTE- Assessor's Block Numbers Shown in Ellipses.
Assessor's Parcel Numbers Shown in Circles.

Provided by:



PARCELQUEST

POR. RANCHO ARROYO SECO
POR. T.5N., R.10E., M.D.B. & M.

12-34



IMPORTANT NOTE: This map was prepared for property tax assessment purposes only. It is assumed that the property, as described in its deed, is the property being assessed. No liability is assumed for the accuracy of the data delineated hereon.

Map changes become effective with the 2008-2009 roll year. Parcel numbers are subject to change prior to adoption of roll on each July 1.

R.M. Bk.6, Sub. Pg.98 (1/22/93) The Oaks Mobile Home Community

NOTE-Assessor's Block Numbers Shown in Ellipses. Assessor's Parcel Numbers Shown in Circles.

Assessor's Map Bk.12, Pg.34
County of Amador, Calif.

Provided by

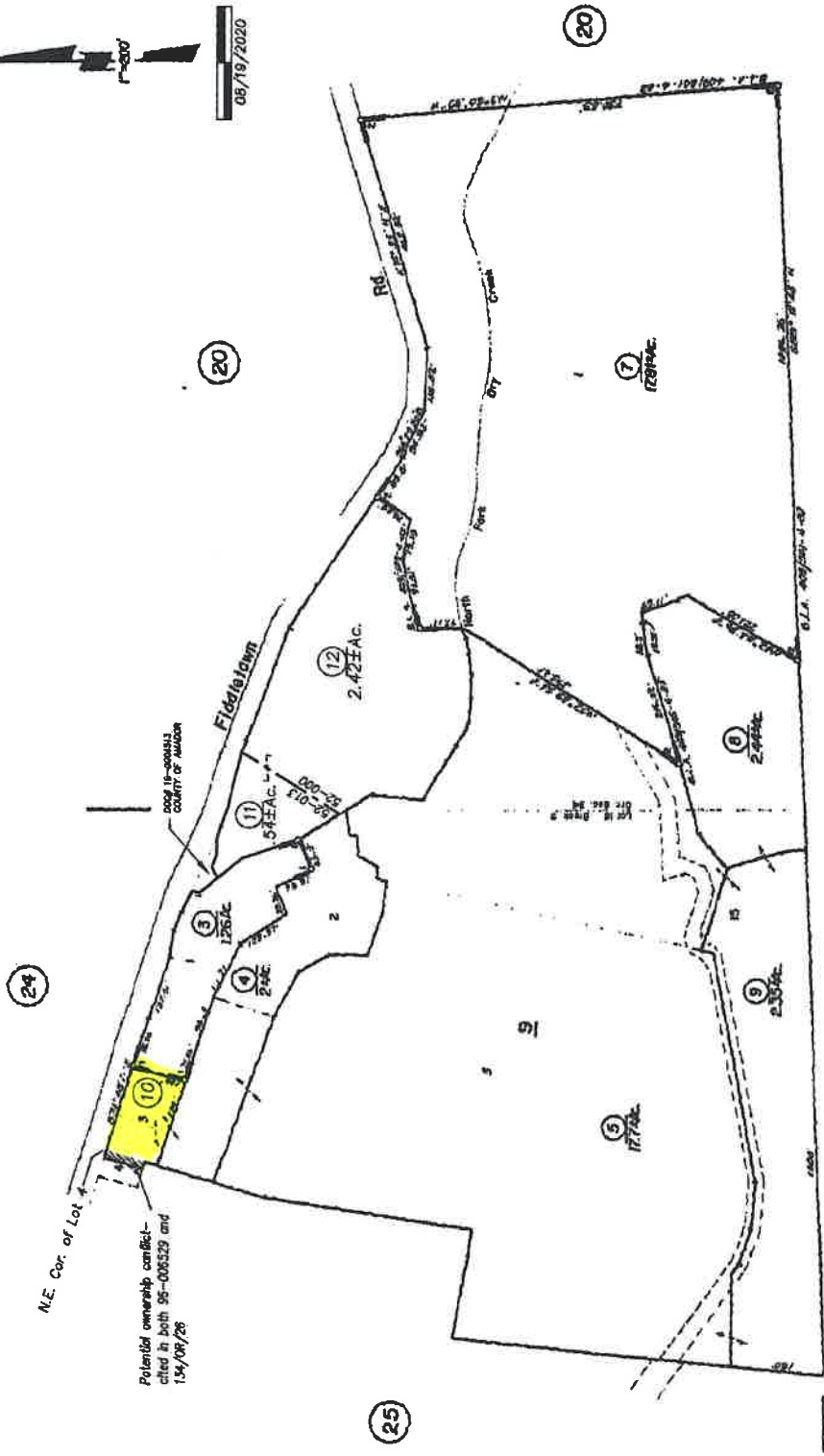
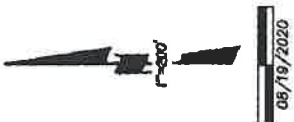


PARCELQUEST

FOR SEC. 34, T. 8N., R. 11E., M.D.B. & M.

Tax Area Code
52-000
52-013

14-30



N.E. Cor. of Lot 4
Potential ownership conflict -
cited in both 95-005529 and
134/08/28

IMPORTANT NOTE: This map was prepared for property tax assessment purposes only. It is assumed that the property, as described in it's deed, is the property being assessed. No liability is assumed for the accuracy of the data delineated hereon.

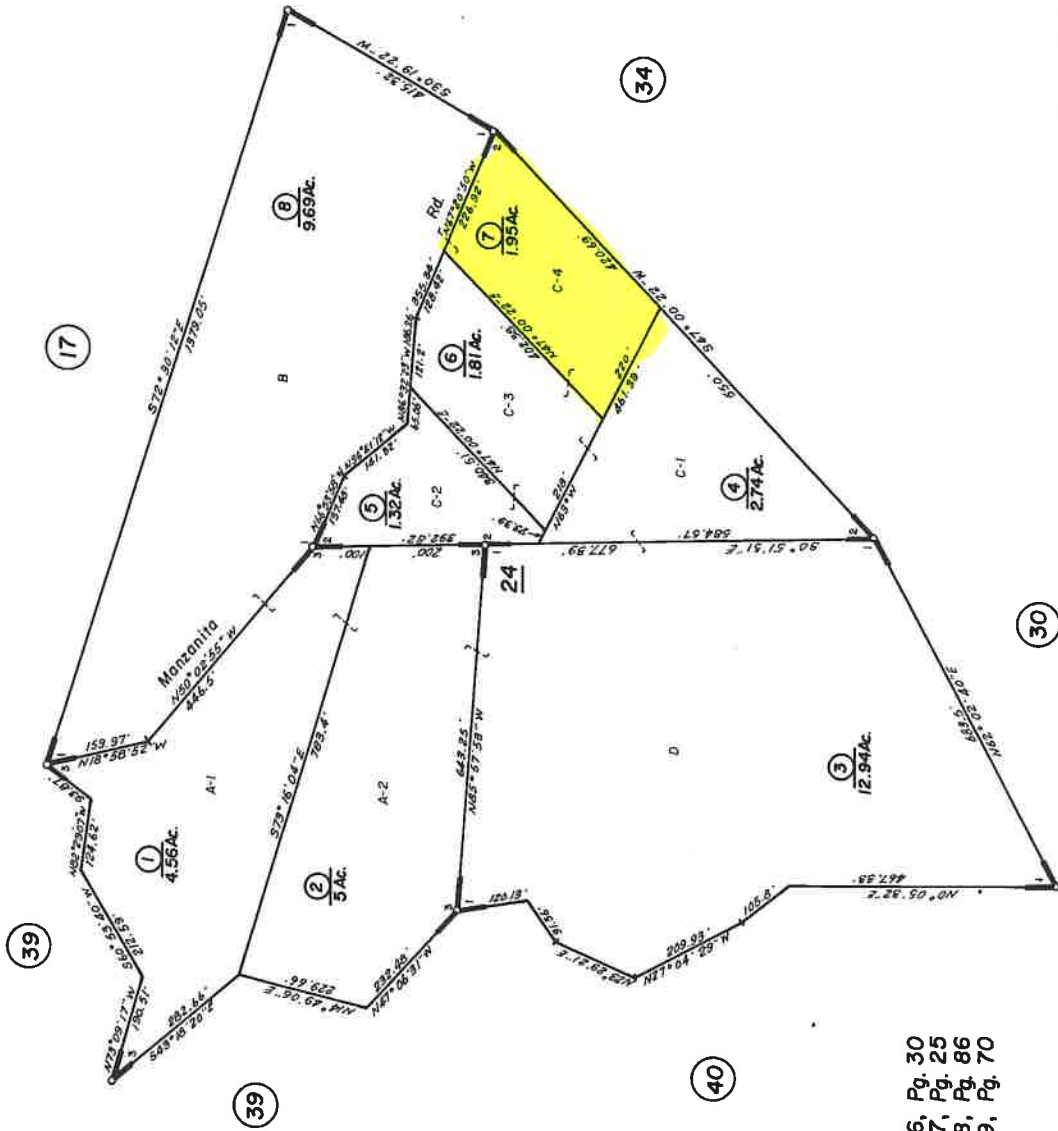
14
20

Fiddletown Townsite
1-P.M. Bk. 29, Pg. 33
2-P.M. Bk. 36, Pg. 3

12

Assessor's Map Bk. 14, Pg. 30
County of Amador, Calif.

POR. SEC'S. 26 & 27, T. 7N., R. 11E., M.D.B. & M.
 (Lot 24 - Sutter Highlands Unit No. 2)



- R.M. Bk. 16, Pg. 30
- 1 - R.M. Bk. 17, Pg. 25
- 2 - R.M. Bk. 18, Pg. 86
- 3 - R.M. Bk. 19, Pg. 70

(8)

Provided by:

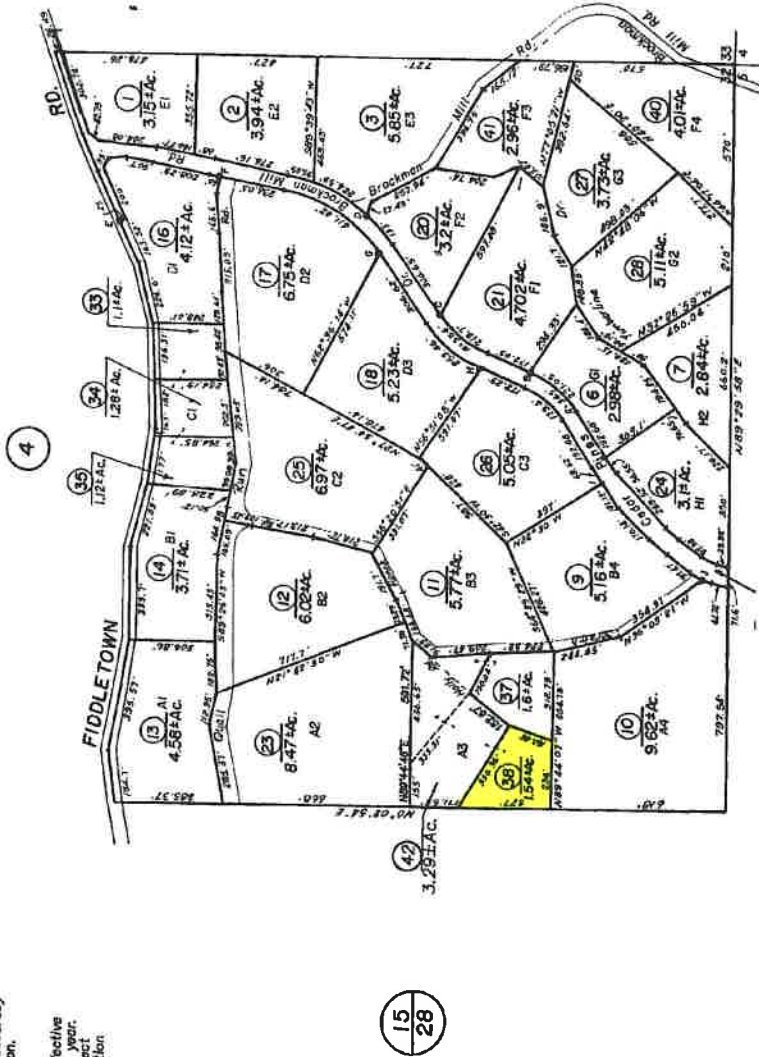
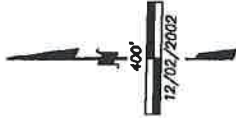


POR. SE 1/4, SEC. 32, T. 8N., R. 12E., M.D.B. & M.

21-33

IMPORTANT NOTE: This map was prepared for property tax assessment purposes only. It is assumed that the property is as described in its deed. No liability is assumed for the accuracy of this data delineated herein.

Map changes become effective with the 2003-2004 roll year. Parcel numbers are subject to change prior to adoption of roll on each July 1.



R.M. Bk. 27, Pg. 81
P.M. Bk. 28, Pg. 98
R.M. Bk. 29, Pg. 65
R.M. Bk. 30, Pg. 22

NOTE—Assessor's Block Numbers Shown in Ellipses.
Assessor's Parcel Numbers Shown in Circles.

Assessor's Map Bk. 21, Pg. 33
County of Amador, Calif.

Provided by:

POR. SW 1/4, SEC. 6, T.7N., R.13E., M.D.B. & M.

23-50

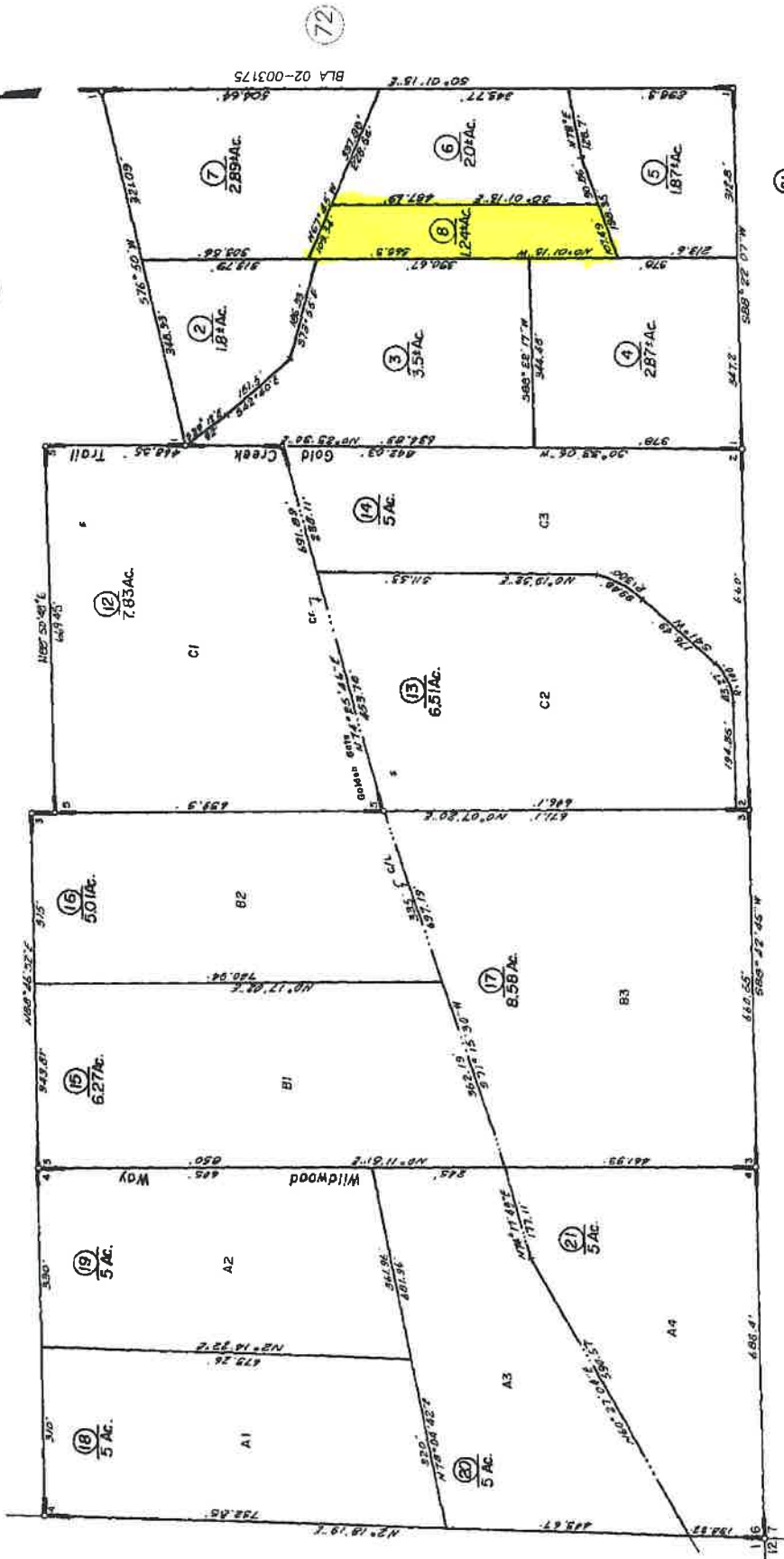
IMPORTANT NOTE: This map was prepared for property tax assessment purposes only. It is assumed that the property, as described in its deed, is the property being assessed. No liability is assumed for the accuracy of the data delineated hereon.

Map changes become effective with the 2003-2004 roll year. Parcel numbers are subject to change prior to adoption of roll on each July 1.

2

43

08/01/2002
200'



21
32

- 1-R.M. Bk. 13, Pg. 18
- 2-R.M. Bk. 24, Pg. 48
- 3-R.M. Bk. 25, Pg. 33
- 4-R.M. Bk. 25, Pg. 34
- 5-R.M. Bk. 25, Pg. 35
- 6-R.M. Bk. 42, Pg. 26
- 7-R.M. Bk. 54, Pg. 71 (5/31/2002)

2

NOTE—Assessor's Block Numbers Shown in Ellipses.
Assessor's Parcel Numbers Shown in Circles.

Assessor's Map Bk. 23 , Pg. 50
County of Amador, Calif.

Provided by:

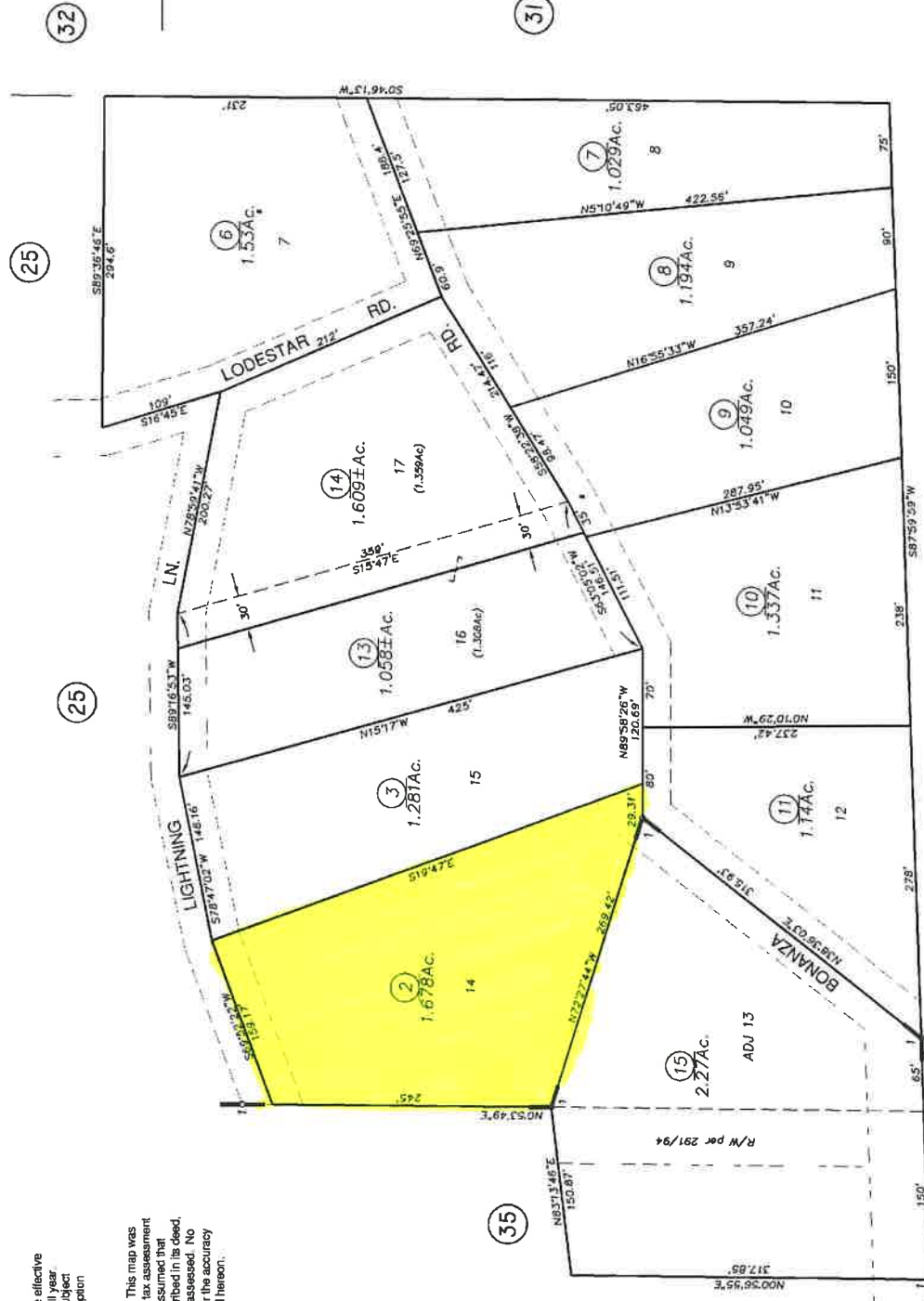
POR. SEC. 30, T.7N, R.13E, M.D.B. & M.

31-26

PARCELQUEST

Map changes become effective with the 2009-2010 roll year. Parcel numbers are subject to change prior to adoption of roll on each July 1.

IMPORTANT NOTE: This map was prepared for property tax assessment purposes only. It is assumed that the property, as described in the deed, is the property being assessed. No liability is assumed for the accuracy of the data delineated hereon.



(2)

R.M. Bk.01, Sub. Pg.01 Venue Acres
1- R.M. Bk.60, Pg.79 (05/05/09)

(15)

Assessor's Map Bk. 31, Pg. 26
County of Amador, Calif.