

VICINITY MAP
NO SCALE

SURVEY NOTES:

- 1) NO PRELIMINARY TITLE REPORT WAS PROVIDED FOR THE PREPARATION OF THIS SURVEY.
- 2) THE POSITION OF IDENTIFIED RECORD EASEMENTS HAVE BEEN PLOTTED USING RECORD DESCRIPTIONS. SURFACE FACILITIES HAVE BEEN PLOTTED USING FIELD INFORMATION. THE ACTUAL LOCATIONS OF UNDERGROUND FACILITIES SHOULD BE VERIFIED PRIOR TO ANY NEW CONSTRUCTIONS.
- 3) THIS IS NOT A BOUNDARY SURVEY. ADDITIONAL FIELD SURVEY AND RESEARCH WILL BE REQUIRED TO ESTABLISHED THE ACTUAL BOUNDARY.
- 4) THE TYPES, LOCATION, SIZES AND/OR DEPTHS OF EXISTING UNDERGROUND UTILITIES AS SHOWN ON THESE DRAWINGS WERE OBTAINED FROM SOURCES OF VARYING RELIABILITY. INTERESTED PARTIES ARE CAUTIONED THAT ONLY ACTUAL EXCAVATION WILL REVEAL THE TYPES, EXTENT, SIZES, LOCATIONS AND DEPTHS OF SUCH UNDERGROUND UTILITIES. JTS ENGINEERING CONSULTANTS, INC. ASSUMES NO RESPONSIBILITY FOR THE COMPLETENESS OR ACCURACY OF ITS DELINEATION OF SUCH UNDERGROUND UTILITIES NOR FOR THE EXISTENCE OF OTHER BURIED OBJECTS OR UTILITIES WHICH MAY BE ENCOUNTERED BUT WHICH ARE NOT SHOWN ON THESE DRAWINGS. PRESCRIPTIVE EASEMENTS MAY EXIST OVER THOSE FACILITIES WHICH ARE NOT WITHIN THE RECORD EASEMENT.
- 5) NO MONUMENTS WERE SET AS A PART OF THIS SURVEY.

BENCHMARK ELEV. N/A
FIELD BOOK NO. _____ PG. _____

JTS ENGINEERING CONSULTANTS, INC.
1808 J STREET
SACRAMENTO CALIFORNIA 95811 (916) 441-6708

DESIGNED: N/A
DRAWN: HKS/RTS
CHECKED: JTS
SUBMITTED: DAVID T. SIDDIQUI, P.E. 12/30/19 25924



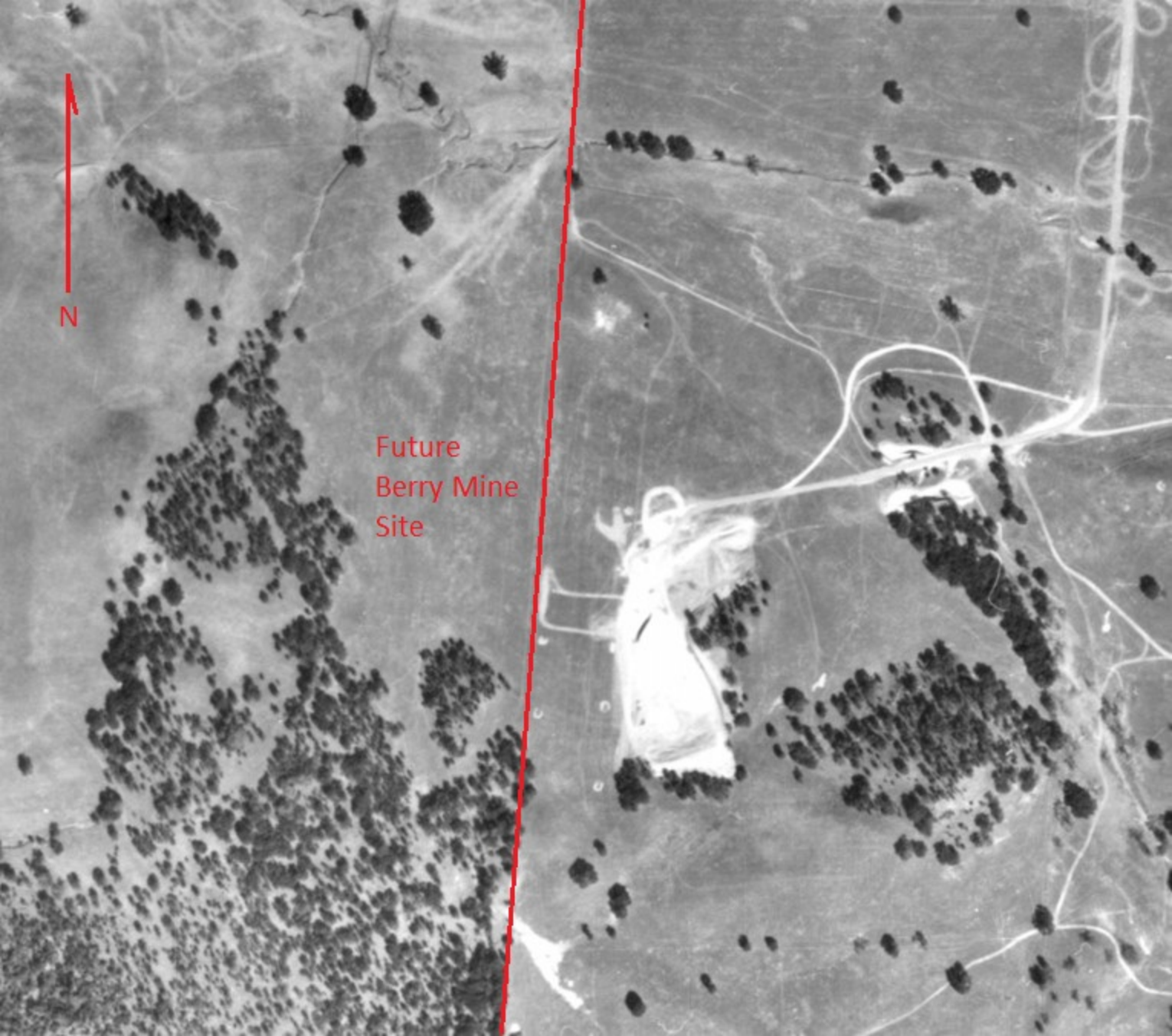
NO	DATE	REVISION	APPROVAL	BY

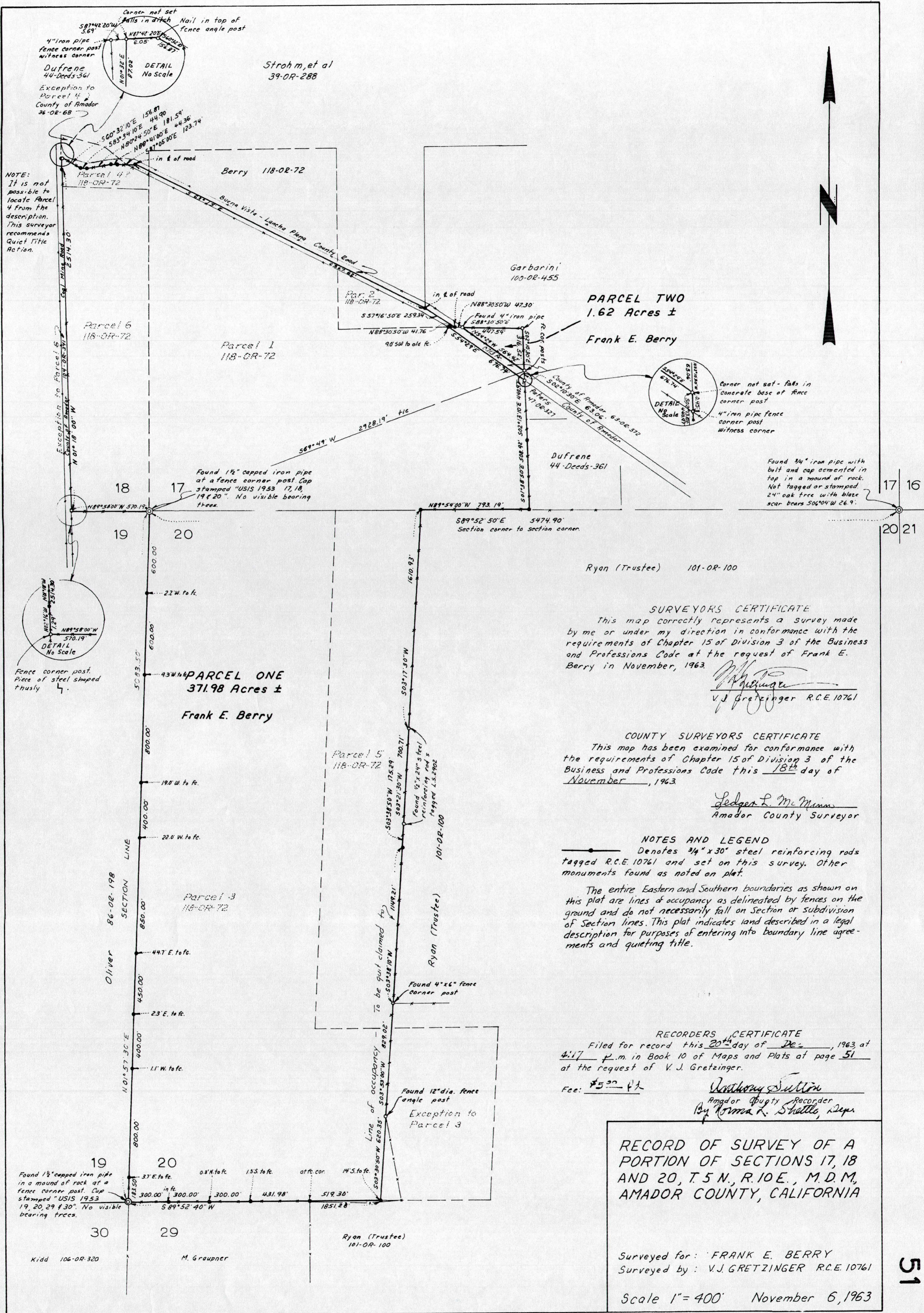
PROPERTY CORNER FLAGGING SURVEY
BUENA VISTA MINE
14 MAPS 13; AND PARCEL 2 29 PM 92
AMADOR COUNTY APN: 012-100-010 AND 024 CALIFORNIA

DATE: 12/19/2019
SHEET 1 OF 1



Future
Berry Mine
Site





NOTE:
It is not possible to locate Parcel 4 from the description. This surveyor recommends Quiet Title Action.

Fence corner post. Piece of steel shaped thusly

Found 1 1/2" capped iron pipe in a mound of rock at a fence corner post. Cap stamped "USIS 1953 17, 18, 19, 20, 29 & 30". No visible bearing trees.

Corner not set
Nails in ditch
Nail in top of fence angle post

NOTE:
It is not possible to locate Parcel 4 from the description. This surveyor recommends Quiet Title Action.

Corner not set - falls in concrete base of fence corner post
4" iron pipe fence corner post witness corner

Found 3/4" iron pipe with bolt and cap cemented in top in a mound of rock. Not tagged or stamped. 24" oak tree with blaze scar bears S06°04'W 26.9'.

SURVEYORS CERTIFICATE
This map correctly represents a survey made by me or under my direction in conformance with the requirements of Chapter 15 of Division 3 of the Business and Professions Code at the request of Frank E. Berry in November, 1963.
V.J. Gretzinger
V.J. Gretzinger R.C.E. 10761

COUNTY SURVEYORS CERTIFICATE
This map has been examined for conformance with the requirements of Chapter 15 of Division 3 of the Business and Professions Code this 18th day of November, 1963.
Ledger L. McManis
Amador County Surveyor

NOTES AND LEGEND
Denotes 3/4" x 30" steel reinforcing rods tagged R.C.E. 10761 and set on this survey. Other monuments found as noted on plat.
The entire Eastern and Southern boundaries as shown on this plat are lines of occupancy as delineated by fences on the ground and do not necessarily fall on Section or subdivision of Section lines. This plat indicates land described in a legal description for purposes of entering into boundary line agreements and quieting title.

RECORDERS CERTIFICATE
Filed for record this 20th day of Dec., 1963 at 4:17 p.m. in Book 10 of Maps and Plats at page 51 at the request of V.J. Gretzinger.
Fee: \$5.00
Anthony Sutton
Amador County Recorder
By *Norma K. Shettle*, Dep.

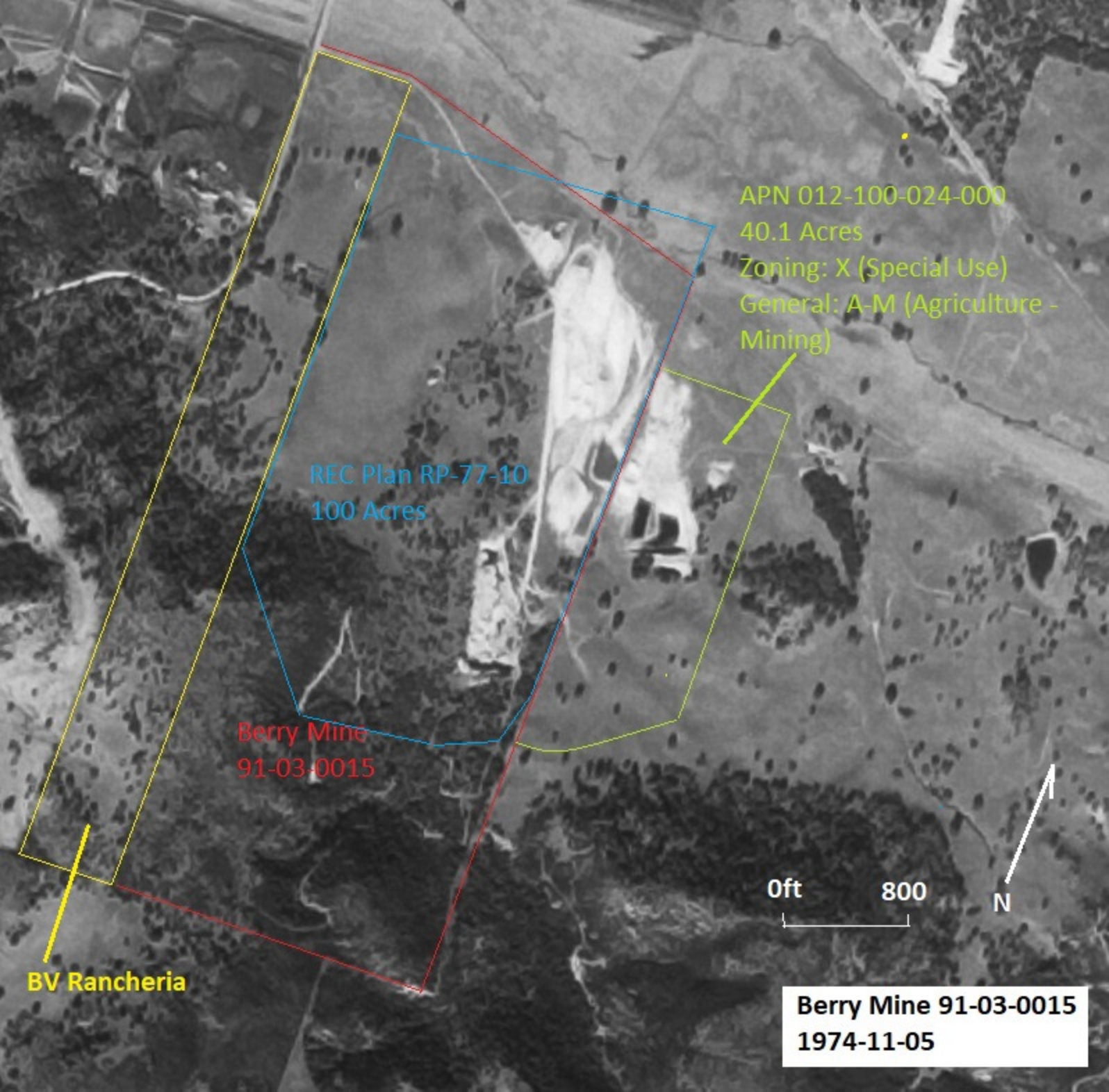
RECORD OF SURVEY OF A PORTION OF SECTIONS 17, 18 AND 20, T.5 N., R.10 E., M.D.M., AMADOR COUNTY, CALIFORNIA
Surveyed for: FRANK E. BERRY
Surveyed by: V.J. GRETZINGER R.C.E. 10761
Scale 1" = 400' November 6, 1963

Berry Mine
1966-08-12

N

Ryan (Trustee) Property
101-OR-100



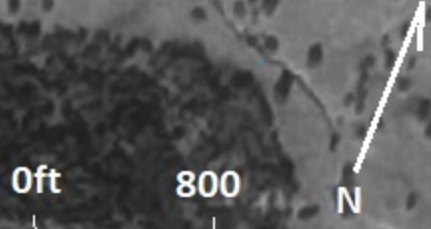


APN 012-100-024-000
40.1 Acres
Zoning: X (Special Use)
General: A-M (Agriculture - Mining)

REC Plan RP-77-10
100 Acres

Berry Mine
91-03-0015

BV Rancheria



Berry Mine 91-03-0015
1974-11-05

Ruler

Line

Path

Polygon

Circle

3D path

3D polygon

Measure the distance or area of a geometric shape on the ground

Perimeter: 3,368.33 Feet

Area: 9.83 Acres

Mouse Navigation

Save

Clear







APN 012-100-024
40.1 Acres

Berry Mine
91-03-0015

Google Earth