

Requested By:
BOARD OF SUPERVISORS
When Recorded Return To:
SURVEYING & ENGINEERING

**BEFORE THE BOARD OF SUPERVISORS OF THE
COUNTY OF AMADOR, STATE OF CALIFORNIA**

IN THE MATTER OF

RESOLUTION APPROVING A NEW ROAD NAME
OF CLUTE CANYON ROAD

RESOLUTION NO. 17-049

WHEREAS, the County of Amador Ordinance Code Section 12.40.050 provides for the Board of Supervisors to approve all official road names; and

WHEREAS, the owner(s) of the land adjoining the unnamed road have requested the road be named Clute Canyon Road.

BE IT RESOLVED by the Board of Supervisors of the County of Amador, State of California, that Clute Canyon Road be an official road name.

The foregoing resolution was duly passed and adopted by the Board of Supervisors of the County of Amador at a regular meeting thereof held on the 9th day of May, 2017, by the following vote:

AYES: Richard M. Forster, Lynn A. Morgan, Patrick Crew, Frank Axe, Brian Oneto
NOES: None
ABSENT: None

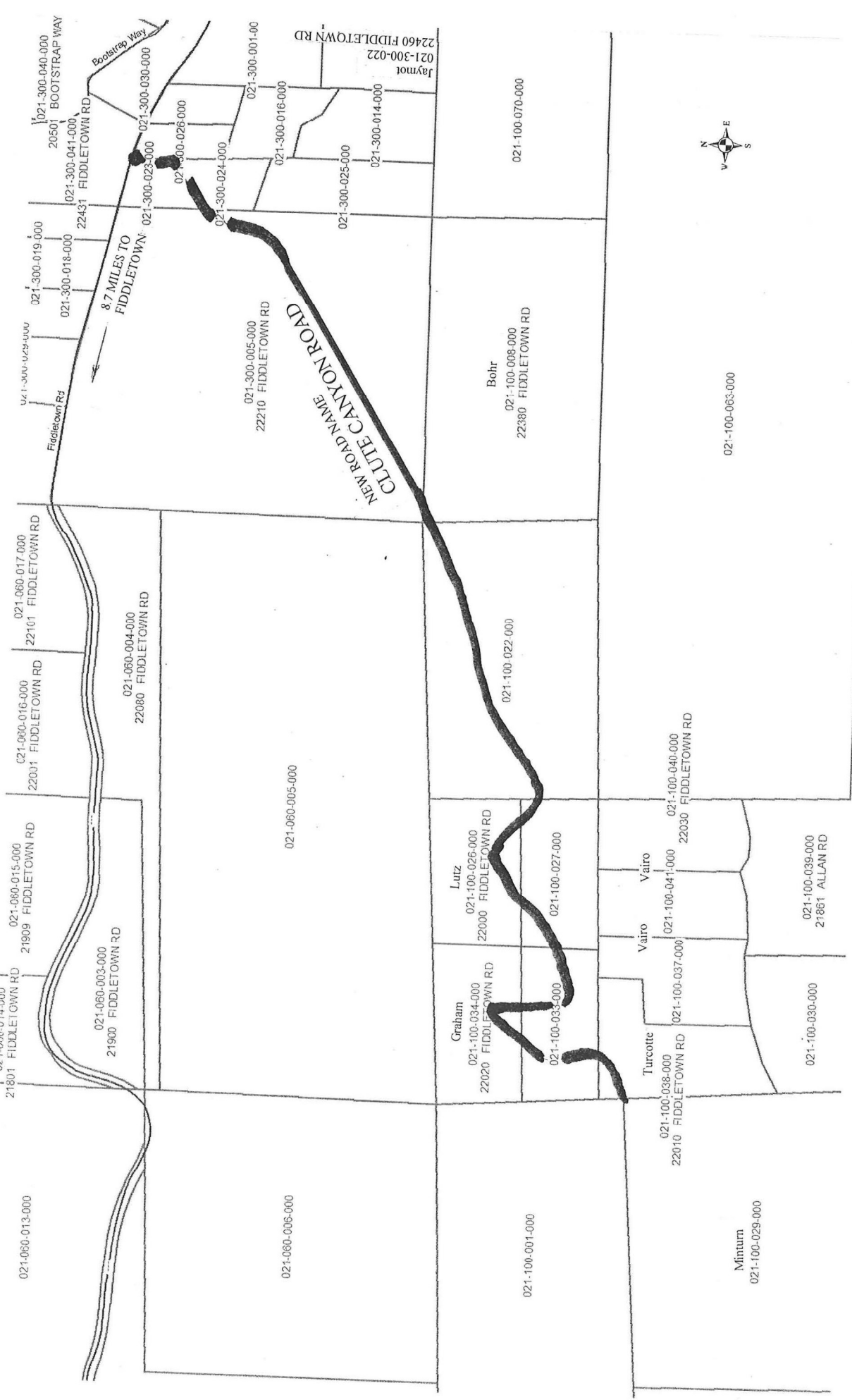


Richard M. Forster, Chairman, Board of Supervisors

ATTEST

JENNIFER BURNS, Clerk of
the Board of Supervisors, Amador
County, California


Deputy



021-060-013-000

21801 FIDDLETOWN RD
021-060-014-000

21909 FIDDLETOWN RD
021-060-015-000

22001 FIDDLETOWN RD
021-060-016-000

22101 FIDDLETOWN RD
021-060-017-000

021-300-019-000
021-300-018-000
021-300-025-000
021-300-026-000
021-300-024-000
021-300-016-000
021-300-001-000

021-300-040-000
20501 BOOTSTRAP WAY
021-300-041-000
22431 FIDDLETOWN RD
021-300-030-000

21900 FIDDLETOWN RD
021-060-003-000

22080 FIDDLETOWN RD
021-060-004-000

22210 FIDDLETOWN RD
021-300-005-000

021-300-025-000
021-300-014-000
021-300-022-000
021-100-070-000

021-060-005-000

021-060-006-000

22000 FIDDLETOWN RD
021-100-026-000

22030 FIDDLETOWN RD
021-100-040-000

021-100-008-000
22380 FIDDLETOWN RD
021-100-022-000

021-100-027-000

22020 FIDDLETOWN RD
021-100-034-000

22030 FIDDLETOWN RD
021-100-041-000

21861 ALLAN RD
021-100-039-000

021-100-030-000

021-100-001-000

22010 FIDDLETOWN RD
021-100-037-000

021-100-038-000

021-100-029-000

021-100-001-000

021-300-002-000
021-300-003-000
021-300-004-000
021-300-005-000
021-300-006-000
021-300-007-000
021-300-008-000
021-300-009-000
021-300-010-000
021-300-011-000
021-300-012-000
021-300-013-000
021-300-014-000
021-300-015-000
021-300-016-000
021-300-017-000
021-300-018-000
021-300-019-000
021-300-020-000
021-300-021-000
021-300-022-000
021-300-023-000
021-300-024-000
021-300-025-000
021-300-026-000
021-300-027-000
021-300-028-000
021-300-029-000
021-300-030-000
021-300-031-000
021-300-032-000
021-300-033-000
021-300-034-000
021-300-035-000
021-300-036-000
021-300-037-000
021-300-038-000
021-300-039-000
021-300-040-000
021-300-041-000
021-300-042-000
021-300-043-000
021-300-044-000
021-300-045-000
021-300-046-000
021-300-047-000
021-300-048-000
021-300-049-000
021-300-050-000

NEW ROAD NAME
CLUTE CANYON ROAD

Graham
021-100-034-000
22020 FIDDLETOWN RD

Lutz
021-100-026-000
22000 FIDDLETOWN RD

Vairo
021-100-041-000
22030 FIDDLETOWN RD

Turcotte
021-100-038-000
22010 FIDDLETOWN RD

Vairo
021-100-041-000
22030 FIDDLETOWN RD

Vairo
021-100-041-000
22030 FIDDLETOWN RD

Bohr
021-100-008-000
22380 FIDDLETOWN RD

Jaymot
021-300-002-000
22460 FIDDLETOWN RD



021-100-063-000

Minturn
021-100-029-000