

Requested By:
BOARD OF SUPERVISORS
Return to:
PUBLIC WORKS DEPARTMENT

**BEFORE THE BOARD OF SUPERVISORS OF THE
COUNTY OF AMADOR, STATE OF CALIFORNIA**

IN THE MATTER OF:

RESOLUTION ACCEPTING ROADS INTO THE)
COUNTY MAINTAINED ROAD SYSTEM) RESOLUTION NO. 16-049
MINERAL RIDGE DRIVE (PORTION), RAPINI)
COURT, BLUFF COURT)

WHEREAS, the Board of Supervisors of Amador County, by Resolution No. 08-073, accepted all offers of dedication for Public Utility Easements appearing on Final Subdivision Map No. 123, Pine Grove Bluffs, Phase 1; and

WHEREAS, the Board of Supervisors of Amador County, by Resolution No. 15-089, authorized the formation of Zone of Benefit No. 13 in County Service Area No. 5; and

WHEREAS, the Board of Supervisors of Amador County, by Resolution No. 16-011, accepted all offers of dedication for Public Utility Easements appearing on Final Subdivision Map No. 123, Pine Grove Bluffs, Phase 2; and

WHEREAS, said roads have been inspected and found to be constructed to County standards;


THEREFORE BE IT RESOLVED by the Board of Supervisors of the County of Amador, State of California, that said Board does hereby (i) accept the offer of dedication of the easement for road purposes over Mineral Ridge Drive (Portion), Rapini Court and Bluff Court as shown on the Zone of Benefit Map for Pine Grove Bluffs, copy attached, and (ii) accept said roads for maintenance purposes into the County Maintained Road System and County Service Area No. 5 Zone of Benefit 13.

The foregoing resolution was duly passed and adopted by the Board of Supervisors in the County of Amador at a regular meeting thereof, held on the 26th day of April, 2016 by the following vote:

AYES: John Plasse, Louis D. Boitano, Lynn A. Morgan, Brian Oneto and
Richard M. Forster

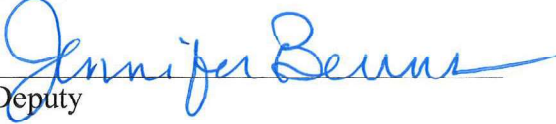
NOES: None

ABSENT: None



John Plasse, Chairman, Board of Supervisors

ATTEST:
JENNIFER BURNS, Clerk of the
Board of Supervisors, Amador County,
California


Deputy

COUNTY SERVICE AREA No. 5 ZONE OF BENEFIT No. 13

for

FINAL SUBDIVISION MAP No. 123 PINE GROVE BLUFFS

DEL RAPINI CONSTRUCTION, INC., a California Corporation
2005012391 and 20090004645

BEING A PORTION OF THE SW 1/4 SECTION 33 AND TH SE 1/4 SECTION 32
T. 7 N., R. 12 E., M. D. M.
COUNTY OF AMADOR, STATE OF CALIFORNIA

SURVEYOR'S STATEMENT

I, CIRO L. TOMA, A LICENSED LAND SURVEYOR IN THE STATE OF CALIFORNIA, DO HEREBY
STATE THAT THIS MAP WAS PREPARED UNDER MY DIRECTION IN JUNE OF 2015.

DATE: June 13, 2015



Ciró L. Toma
CIRO L. TOMA
F.L.S. 3570
MY LICENSE EXPIRES 6-30-2016

NOTES and LEGEND

DENOTES COUNTY MAINTAINED AREA UNDER CSA No. 5, ZONE OF BENEFIT 13, ENTIRE PROPERTY AS SHOWN

0 DENOTES DIMENSION POINT

DENOTES EXISTING U.S.A. BOUNDARY

DENOTES COURSE NUMBER TO CORRESPOND WITH LEGAL DESCRIPTION
ROADS WILL ONLY BE MAINTAINED UNDER CSA No. 5, OR OTHERWISE UPON ACCEPTANCE OF DEDICATION BY COUNTY, WHOLE OR IN PART.

TOTAL AREA = 33.44 ACRES
TOTAL LENGTH OF ROADS TO BE MAINTAINED PER THIS MAP = 3244'
TOTAL NUMBER OF LOTS = 28



PROPOSED ANNEXATION TO
COUNTY SERVICE AREA No. 5
ZONE OF BENEFIT No. 13
PINE GROVE BLUFFS

Scale: 1"=200'

REVIEWED BY: _____ DATE: _____
SURVEYING AND ENGINEERING

APPROVED: _____ DATE: _____
S.A.Z.

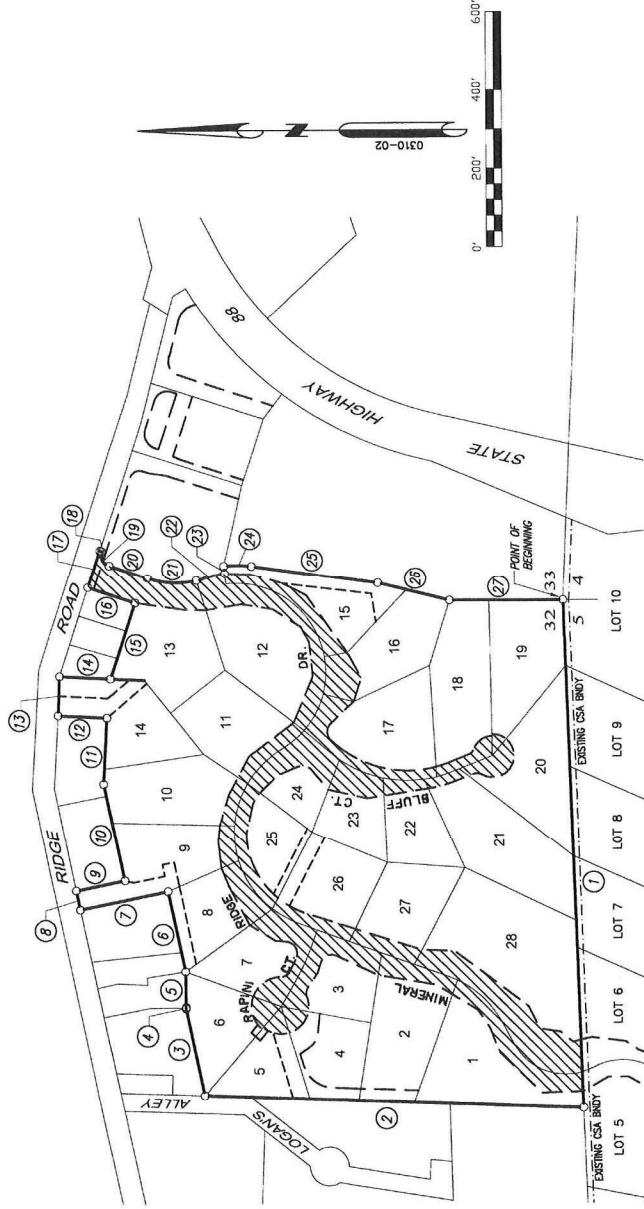
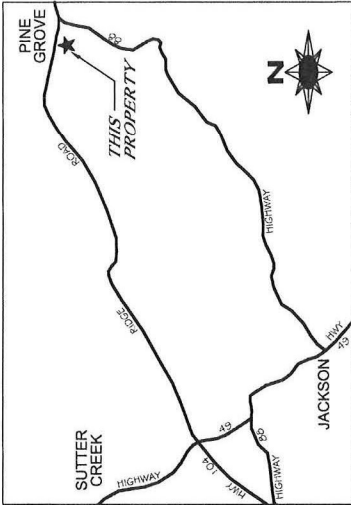
DISAPPROVED: _____ DATE: _____

JUNE, 2015

FILED

SHEET 1 OF 1 SHEET

COURSE DATA TABLE	
1	S 87°58'27" W 1295.57' 15 S 72°10'52" E 202.93'
2	N 01°57'41" E 956.77' 16 N 16°38'57" E 125.02'
3	N 78°01'25" E 226.55' 17 S 72°11'39" E 102.94'
4	N 77°19'53" E 177.7' 18 S 17°48'21" W(8) 3.00'
5	N 89°27'56" E 92.25' 19 R=30.00' D=88°47'30" L=46.44'
6	N 78°12'46" E 209.36' 20 S 19°06'51" W 101.13'
7	N 11°50'51" W 225.08' 21 R=220.00' D=37°51'42" L=145.38'
8	N 78°11'47" E 49.80' 22 R=255.00' D=12°03'31" L=53.67'
9	S 11°50'51" E 124.95' 23 N 83°18'39" E(6) 20.00'
10	N 78°08'29" E 254.02' 24 R=275.00' D=14°40'07" L=70.40'
11	S 87°07'45" E 168.87' 25 S 07°59'46" W 322.60'
12	N 02°49'28" E 123.67' 26 S 14°09'25" W 185.65'
13	S 87°46'23" E 99.94' 27 S 00°00'00" W 287.94'
14	S 02°53'55" W 128.31'



CSA 5, ZONE OF BENEFIT 10
PETERSEN RANCH UNIT 2
SEE 9--SUBS-28