

BEFORE THE BOARD OF SUPERVISORS OF THE  
COUNTY OF AMADOR, STATE OF CALIFORNIA

IN THE MATTER OF:

RESOLUTION AMENDING THE LAND USE ) RESOLUTION NO. 15-022  
ELEMENT OF THE AMADOR COUNTY )  
GENERAL PLAN FROM MINERAL RESOURCE )  
ZONE (MRZ) AND AGRICULTURAL-GENERAL )  
(A-G) TO INDUSTRIAL (I) FOR THE EDWIN )  
CENTER NORTH PROPERTY LOCATED IN )  
THE IONE AREA OF AMADOR COUNTY )

WHEREAS, the County received an application from the property owner of a parcel located in the Ione area of Amador County to change the General Plan, Land Use Element classification from Mineral Resources Zone (MRZ) and Agricultural-General (A-G) to Industrial (I); and

WHEREAS, the Amador County Planning Commission did conduct a public hearing on the application and recommended approval of the request with findings the proposed uses are consistent with other existing uses in the area, the General Plan Amendment will not have a significant adverse effect on the environment in the area; and

WHEREAS, the Amador County Board of Supervisors did also conduct a public hearing on the application and agreed with the Planning Commission findings and recommendations.

NOW, THEREFORE, BE IT HEREBY RESOLVED that the Board of Supervisors of the County of Amador does hereby amend the General Plan, Land Use Element classification map for the Edwin Center North property from Mineral Resources Zone (MRZ) and Agricultural-General (A-G) to Industrial (I) as shown on the attached map, Attachment "A".

The foregoing resolution was duly passed and adopted by the Board of Supervisors in the County of Amador at a regular meeting thereof, held on the 24th day of March, 2015, by the following vote:

AYES: Brian Oneto, John Plasse, Louis D. Boitano, and Richard M. Forster

NOES: Lynn A. Morgan

ABSENT: None

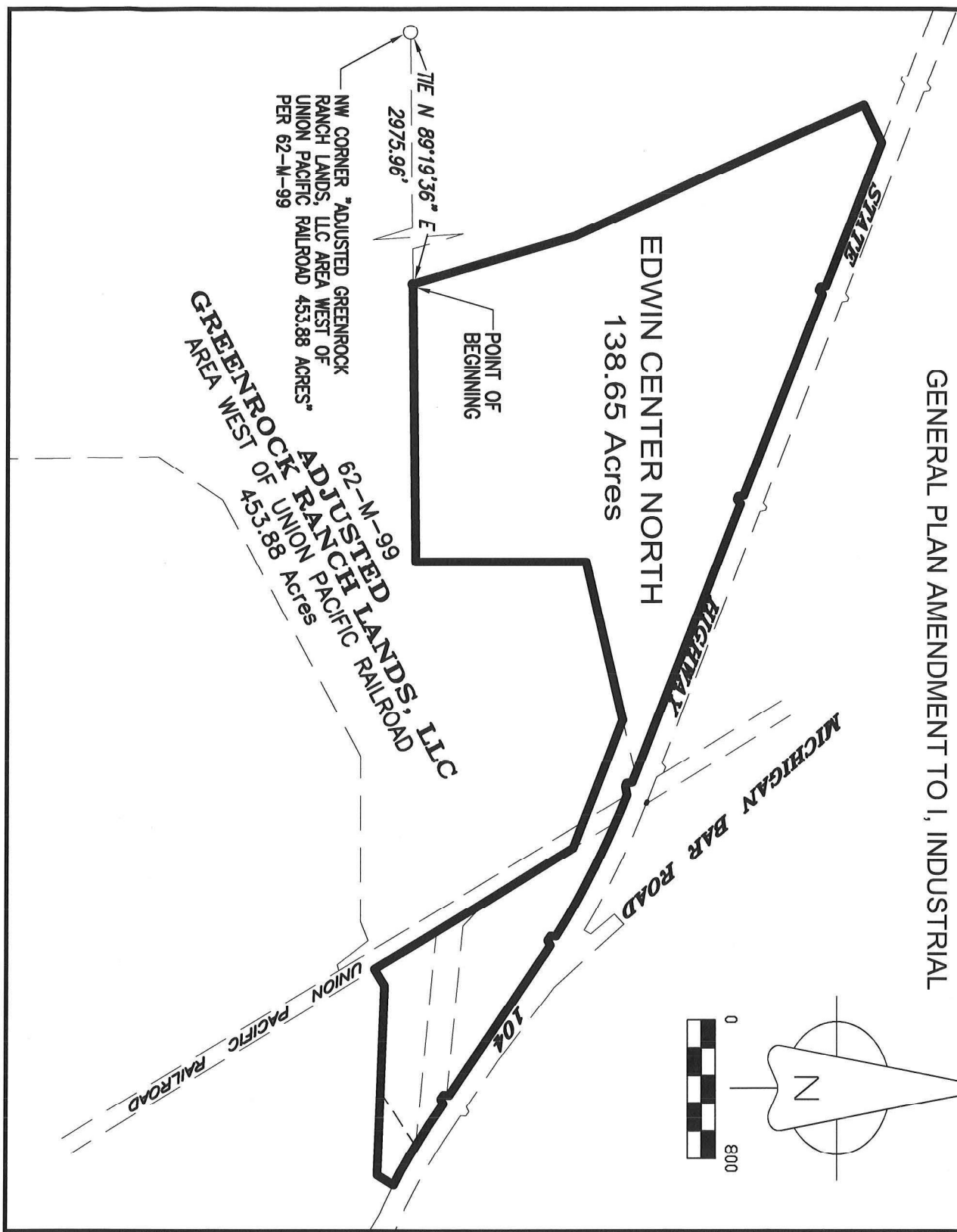
  
\_\_\_\_\_  
Brian Oneto, Chairman, Board of Supervisors

ATTEST:

JENNIFER BURNS, Clerk of the  
Board of Supervisors, Amador County,  
California

  
\_\_\_\_\_  
Deputy

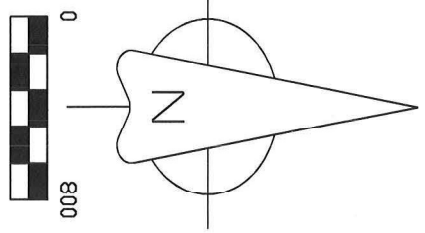
ATTACHMENT A  
 EDWIN CENTER NORTH  
 GENERAL PLAN AMENDMENT TO I, INDUSTRIAL




TILE N 89°19'36" E  
 2975.96'  
 NW CORNER "ADJUSTED GREENROCK RANCH LANDS, LLC AREA WEST OF UNION PACIFIC RAILROAD 453.88 ACRES" PER 62-M-99

62-M-99  
 ADJUSTED GREENROCK RANCH LANDS, LLC  
 AREA WEST OF UNION PACIFIC RAILROAD  
 453.88 Acres

EDWIN CENTER NORTH  
 138.65 Acres



SHEET <b>1</b> OF 1 SHEETS	JOB NO.: 1210-02 DRAWN BY: GAW DATE: 10.10.2012 SCALE: 1" = 800' EXHIBIT MAP <b>EDWIN CENTER NORTH</b> BEING A PORTION OF THE RANCHO ARROYO SECO AMADOR COUNTY, CALIFORNIA	 <b>Toma &amp; Associates Inc.</b> ENGINEERING - SURVEYING - PLANNING 41 Summit Street, Jackson, CA 95642 (209) 223-0156	REVISIONS	BY