

Requested By:
BOARD OF SUPERVISORS
When recorded return to:
SURVEYING & ENGINEERING

**BEFORE THE BOARD OF SUPERVISORS OF THE
COUNTY OF AMADOR, STATE OF CALIFORNIA**

IN THE MATTER OF

RESOLUTION APPROVING A BOUNDARY) RESOLUTION NO. 15-023
LINE ADJUSTMENT #2013-022 APPLICATION)
EXTENSION FOR SIERRA PACIFIC INDUSTRIES)
A CALIFORNIA CORPORATION, SIERRA PACIFIC)
INDUSTRIES, A CALIFORNIA LIMITED LIABILITY)
COMPANY, AND SIERRAPINE, A CALIFORNIA)
LIMITED PARTNERSHIP)

BE IT RESOLVED by the Board of Supervisors of the County of Amador, State of California, that said Board does hereby approve the boundary line adjustment extension of time for Sierra Pacific Industries, A California Corporation, Sierra Pacific Industries, A California Limited Liability Company, and Sierrapine, A California Limited Partnership, on file in the Amador County Surveyor's Office, as Boundary Line Adjustment No. 2013-022; and

BE IT FURTHER RESOLVED that the approval granted by this Board shall terminate and be of no further force or effect if this boundary line adjustment is not completed in all aspects and recorded before January 3, 2016.

The foregoing resolution was duly passed and adopted by the Board of Supervisors of the County of Amador at a regular meeting thereof, held on the 14th day of April, 2015, by the following vote:

AYES: Brian Oneto, John Plasse, Louis D. Boitano, Richard M. Forster and
Lynn A. Morgan

NOES: None

ABSENT: None



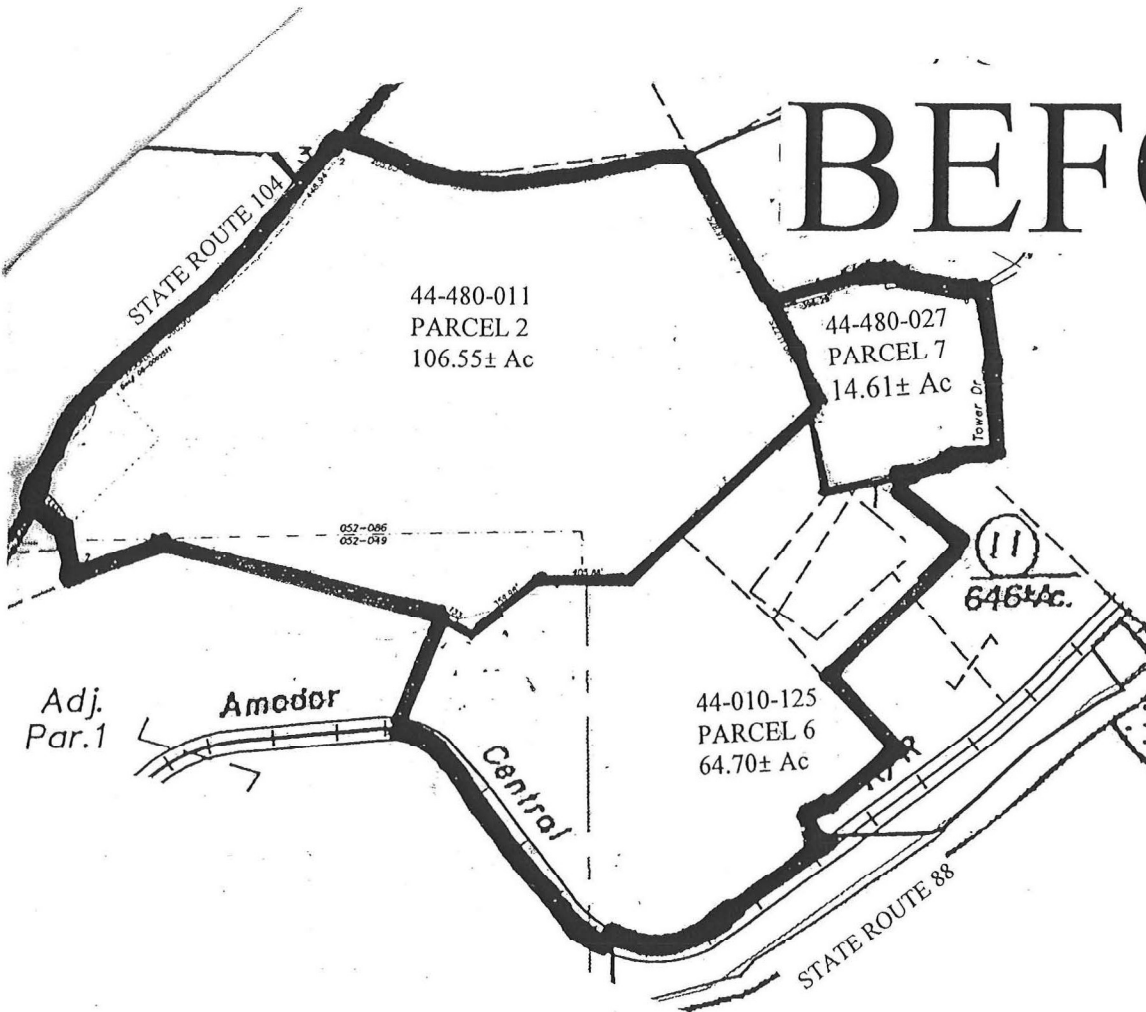
Brian Oneto, Chairman

ATTEST:

JENNIFER BURNS, Clerk of the
Board of Supervisors, Amador County,
California


Deputy

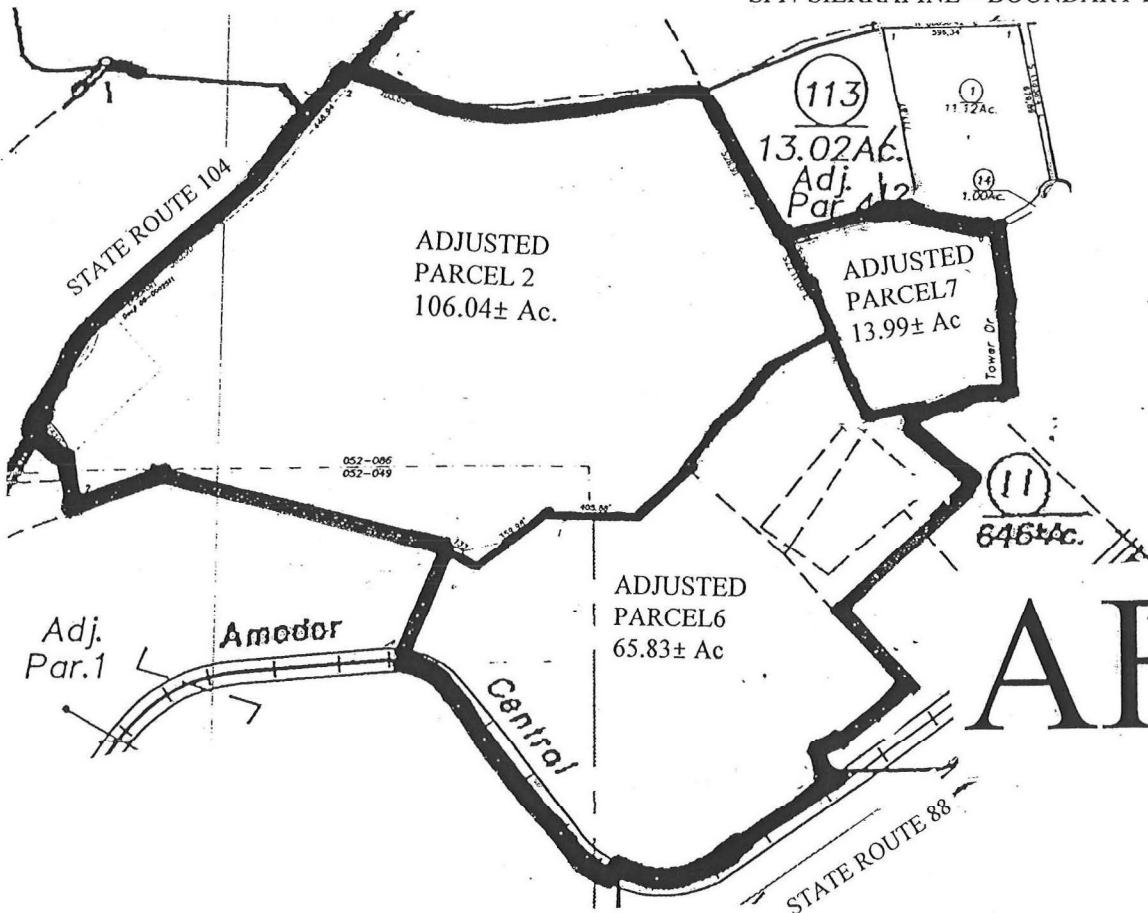
BEFORE



N

1" = 800'

SPI / SIERRAPINE - BOUNDARY LINE ADJUSTMENT # 2013-022



AFTER