

Requested By:
BOARD OF SUPERVISORS
Return to:
SURVEYING & ENGINEERING

**BEFORE THE BOARD OF SUPERVISORS OF THE
COUNTY OF AMADOR, STATE OF CALIFORNIA**

IN THE MATTER OF:

RESOLUTION APPROVING THE FINAL) RESOLUTION NO. 15-024
SUBDIVISION MAP AND ACCEPTING)
AND REJECTING OFFERS OF)
DEDICATION APPEARING ON FINAL)
SUBDIVISION MAP NO. 180, PHASE 1)
TIMBER CREEK TOWNHOMES)

WHEREAS, the Amador County Board of Supervisors has determined that said map is in conformity with the requirements of the County of Amador.

THEREFORE, BE IT RESOLVED by the Amador County Board of Supervisors that said Board hereby approves Final Subdivision Map No. 180, Phase 1, Timber Creek Townhomes; and

BE IT RESOLVED by the Board of Supervisors of the County of Amador that all offers of dedication for Public Utility Easements appearing on Final Subdivision Map No. 180, Phase 1, Timber Creek Townhomes, by Cory J. Kleine, Land Surveyor, dated February 18, 2015, be and hereby are accepted; and

BE IT FURTHER RESOLVED that all other offers of dedication appearing on said map be and hereby are rejected at this time, subject to subsequent acceptance by future Resolution of this Board.

The foregoing resolution was duly passed and adopted by the Board of Supervisors of the County of Amador at a regular meeting thereof held on the 14th day of April, 2015, by the following vote:

AYES: Brian Oneto, John Plasse, Louis D. Boitano, Richard M. Forster and
Lynn A. Morgan

NOES: None

ABSENT: None



Brian Oneto, Chairman, Board of Supervisors

ATTEST:

JENNIFER BURNS, Clerk of the
Board of Supervisors, Amador County,
California

A handwritten signature in blue ink, reading "Lissa Kapteff", is written over a horizontal line.

Deputy

LINE TABLE

LINE	BEARING	LENGTH
L1	S71°53'19"E	14.67'
L2	S18°06'41"W	1.50'
L3	S71°53'19"E	13.50'
L4	S18°06'41"W	4.00'
L5	S71°53'19"E	13.50'
L6	N18°06'41"E	1.50'
L7	S71°53'19"E	14.67'
L8	N18°06'41"E	2.50'
L9	S71°53'19"E	13.50'
L10	N18°06'41"E	1.50'
L11	S71°53'19"E	14.67'
L12	N71°53'19"W	6.30'
L13	N18°06'41"E	2.00'
L14	N71°53'19"W	19.79'
L15	N18°06'41"E	4.00'
L16	N71°53'19"W	20.34'
L17	N18°06'41"E	4.00'
L18	N71°53'19"W	19.79'
L19	S18°06'41"W	2.00'
L20	N71°53'19"W	6.30'
L21	S71°53'19"E	6.30'
L22	S18°06'41"W	2.00'
L23	S71°53'19"E	19.92'
L24	S18°06'41"W	4.00'
L25	S71°53'19"E	19.92'
L26	S18°06'41"W	2.00'
L27	S71°53'19"E	6.30'
L28	N71°53'19"W	14.67'
L29	N18°06'41"E	1.50'
L30	N71°53'19"W	19.63'
L31	N18°06'41"E	4.00'
L32	N71°53'19"W	19.63'
L33	S18°06'41"W	1.50'
L34	N71°53'19"W	4.67'
L35	N04°23'34"E	7.93'
L36	N04°23'34"E	7.93'
L37	N04°23'34"E	7.93'
L38	N04°23'34"E	7.93'
L39	N04°23'34"E	7.93'
L40	S04°23'34"W	6.89'

CURVE TABLE

CURVE	DELTA	RADIUS	LENGTH
C1	A=2°13'04"	37.00'	19.87'
C2	A=0°52'27"	91.00'	9.33'
C3	A=4°49'39"	91.00'	79.35'
C4	A=5°50'04"	64.00'	62.37'
C5	A=2°13'04"	64.00'	32.64'
C6	A=5°50'06"	37.00'	36.06'
C7	A=27°43'19"	67.00'	17.90'
C8	A=17°56'52"	64.00'	19.60'
C9	A=12°45'34"	91.00'	20.27'

EASEMENT TABLE

LINE	BEARING	LENGTH
E1	S64°23'51"W	7.21'
E2	S31°20'47"W	12.00'
E3	S31°20'47"W	16.24'
E4	N18°06'41"E	43.24'
E5	N18°06'41"E	43.24'
E6	N18°06'41"E	43.24'
E7	N22°13'26"W	13.64'
E8	S71°53'19"W	12.96'
E9	S71°53'19"W	10.67'
E10	S71°53'19"W	50.72'
E11	S18°06'41"E	32.84'
E12	S64°23'51"W	11.47'
E13	N71°53'19"W	21.79'
E14	S04°23'34"E	7.30'
E15	S04°23'34"E	7.30'
E16	S04°23'34"E	14.61'
E17	S71°53'19"W	10.80'

EASEMENT TABLE

CURVE	DELTA	RADIUS	LENGTH
E1	A=0°34'37"	352.00'	65.92'
E2	A=8°05'32"	49.00'	41.13'
E3	A=6°07'46"	20.00'	21.22'
E4	A=21°12'24"	80.00'	18.81'
E5	A=1°49'55"	20.00'	27.90'
E6	A=2°06'40"	80.00'	36.17'
E7	A=1°18'00"	352.00'	9.02'
E8	A=3°42'00"	20.00'	12.00'

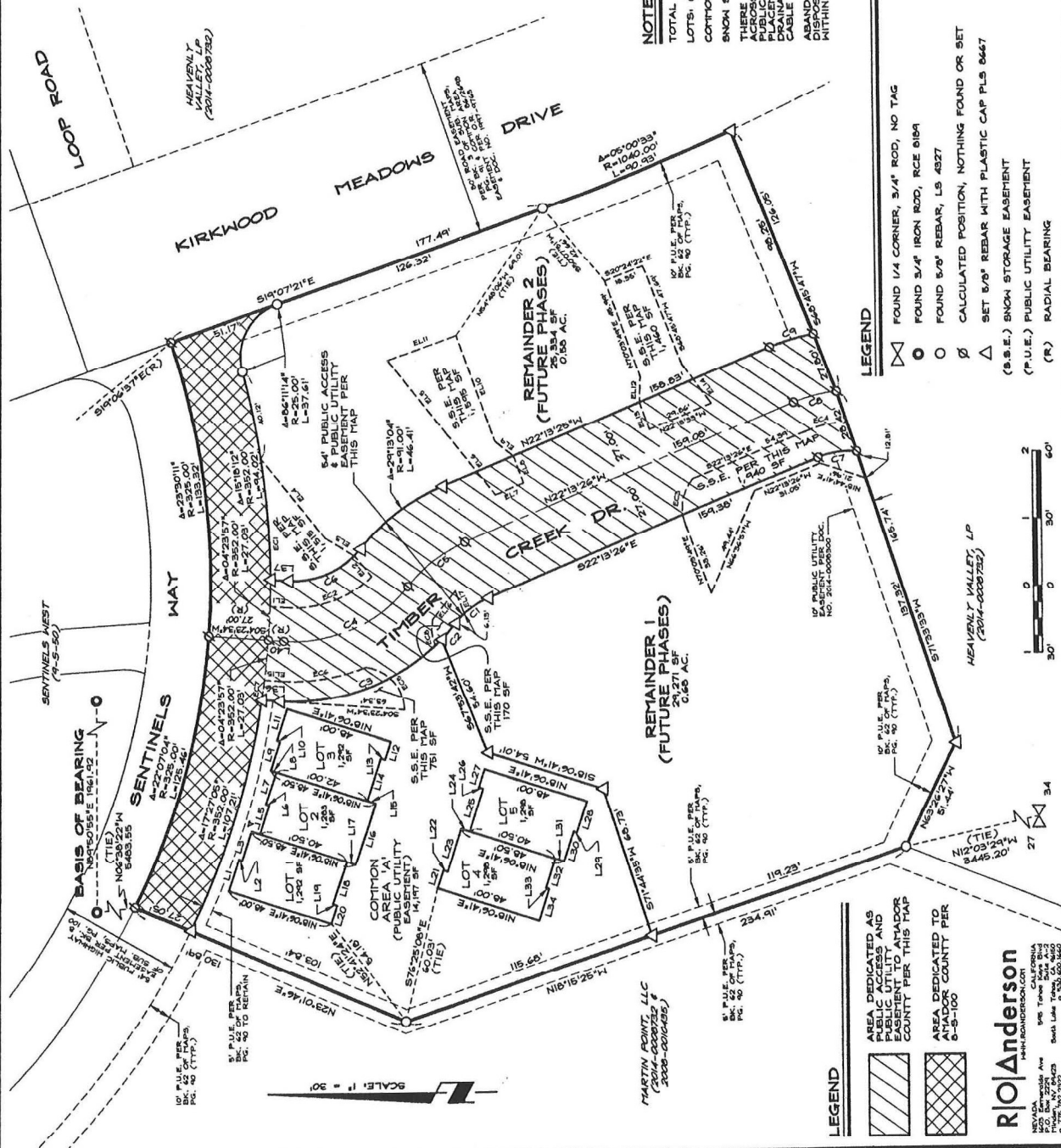
NOTES

TOTAL AREA: 2.26 AC./99,248 SF
 LOTS: (5) 6,648 SF
 COTTON AREA 'A', 14,197 SF
 SNOW STORAGE EASEMENT AREA: 7,481 SF
 THERE IS HEREBY GRANTED FOR AND ACROSS THE ENTIRE COTTON AREA 'A', A PUBLIC UTILITY EASEMENT FOR WATER, STORM DRAINAGE, GAS, POWER, TELEPHONE, CABLE TV, AND HAILEBOOKS.
 ABANDONED UNDERGROUND EFFLUENT DISPOSAL LEACH PITS ARE PRESENT WITHIN THE BOUNDARIES OF THIS MAP.

SCALE: 1" = 30'

FINAL SUBDIVISION MAP
 NO. 180
 (PHASE 1)
 TIMBER CREEK TOWNHOMES

LOCATED WITHIN A PORTION OF THE NW1/4 OF SECTION 27, T.10N., R.7E., M.D.M., AMADOR COUNTY, CALIFORNIA



LEGEND

- ⊗ FOUND 1/4 CORNER, 3/4" ROD, NO TAG
 - FOUND 3/4" IRON ROD, RCE 8184
 - FOUND 5/8" REBAR, LS 4327
 - ⊕ CALCULATED POSITION, NOTHING FOUND OR SET
 - △ SET 5/8" REBAR WITH PLASTIC CAP PLS 6467
- (S.S.E.) SNOW STORAGE EASEMENT
 (P.U.E.) PUBLIC UTILITY EASEMENT
 (R) RADIAL BEARING

LEGEND

- [Hatched Box] AREA DEDICATED AS PUBLIC UTILITY EASEMENT TO AMADOR COUNTY PER THIS MAP
- [Cross-hatched Box] AREA DEDICATED TO AMADOR COUNTY PER 6-5-100

R|Anderson
 SURVEYING & ENGINEERING
 10000 Anderson Ave
 P.O. Box 10000
 South Lake Tahoe, CA 96150
 P 775.752.2500 F 775.752.2501