

Recording requested by:
BOARD OF SUPERVISORS
When recorded send to:
BOARD OF SUPERVISORS

**BEFORE THE BOARD OF SUPERVISORS OF THE
COUNTY OF AMADOR, STATE OF CALIFORNIA**

IN THE MATTER OF:

RESOLUTION AUTHORIZING RECORDATION)	RESOLUTION NO. 15-028
OF A NOTICE OF RECLAMATION PLAN APPROVAL)	
PURSUANT TO THE SURFACE MINING AND)	
RECLAMATION ACT, PUBLIC RESOURCES CODE)	
SECTION 2772.7 FOR THE NEWMAN RIDGE QUARRY)	
WHICH SUPERSEDES PREVIOUSLY ADOPTED)	
RESOLUTION NO. 12-116 AND NOTICE OF)	
RECLAMATION PLAN APPROVAL RECORDED AS)	
DOCUMENT 2012-0110009-00 IN THE OFFICE OF THE)	
AMADOR COUNTY RECORDER)	

WHEREAS, on October 9, 2012 the Board of Supervisors, approved a reclamation plan for the Newman Ridge Quarry; and

WHEREAS, on November 7, 2012 a petition for writ of mandate was filed in the Superior Court challenging the Board of Supervisors' actions; and

WHEREAS, on February 6, 2014 the Superior Court issued an order granting the petition and finding a deficiency in the certified Final Environmental Impact Report (EIR) in two respects; and

WHEREAS, the Court further ordered the County to vacate its certification of the Final EIR and its approval of the Project, and to address the identified deficiencies in the Final EIR; and

WHEREAS, pursuant to that Order, on April 8, 2014 the Board of Supervisors adopted Resolution 14-024 vacating the project approvals and certification of the Final EIR; and

WHEREAS, after addressing the identified deficiencies in a Partially Recirculated Final EIR, providing for the required public comment period, and conducting a public hearing to re-consider the land use permit applications for the proposed Newman Ridge Project the Board of Supervisors, on March 24, 2015 approved the reclamation plan for the Newman Ridge Quarry; and

WHEREAS, the Surface Mining and Reclamation Act, Public Resources Code, Section 2772.7 requires the lead agency, upon approval of a reclamation plan or an amendment to a reclamation plan, to record a "Notice of Reclamation Plan Approval" with the county recorder.

BE IT RESOLVED by the Board of Supervisors of the County of Amador, State of California, that said Board does hereby authorize the Chairman to sign the requisite "Notice of Reclamation Plan Approval" and cause the recordation of said document as required.

The foregoing resolution was duly passed and adopted by the Board of Supervisors of the County of Amador at a regular meeting thereof, held on the 14th day of April, 2015, by the following vote:

AYES: Brian Oneto, John Plasse, Louis D. Boitano, Richard M. Forster, and
Lynn A. Morgan

NOES: None

ABSENT: None



Brian Oneto, Chairman, Board of Supervisors

ATTEST:

JENIFER BURNS, Clerk of the
Board of Supervisors, Amador County,
California



Deputy

Recording requested by, and when recorded,
return this Notice to:

County of Amador
Planning Department
810 Court Street
Jackson, CA 95642

For Recorder's use

NOTICE OF RECLAMATION PLAN APPROVAL

Mining operations conducted on the hereinafter described real property are subject to a reclamation plan approved by the Amador County Board of Supervisors, a copy of which is on file with the Amador County Planning Department, located at 810 Court Street, Jackson, California 95642.

Property Owner(s) of Record: Greenrock Ranch Lands, LLC, a Delaware limited liability company, and Edwin Lands, LLC, a Delaware limited liability company

Owner of Record of the Mine Operation: Newman Minerals, LLC

Lead Agency: County of Amador

Description of Real Property: See Exhibit A, attached hereto.

Map: See Exhibit B, attached hereto.

Vicinity Map: See Exhibit C, attached hereto.

NOTE: *This Notice of Reclamation Plan Approval supersedes the Notice of Reclamation Plan Approval recorded on December 6, 2012 as Document 2012-0011009-00 in the Office of the Amador County Recorder. Pursuant to a Court Order the previous approval of the Reclamation Plan was vacated by action of the Board of Supervisors on April 8, 2014 (Resolution No. 14-024). After re-hearing the project the Reclamation Plan was approved by the Board of Supervisors on March 24, 2015.*

IN WITNESS WHEREOF, Brian Oneto, as Chairman of the Board of Supervisors, County of Amador, has caused this Notice of Reclamation Plan Approval to be duly recorded with the Amador County Recorder, in compliance with California Public Resources Code section 2772.7.

Dated

April 16, 2015

By

Brian Oneto

Brian Oneto, Chairman

(RESOLUTION NO. 15-028)

(4/14/15)

EXHIBIT A

**Legal Description
NEWMAN RIDGE QUARRY RECLAMATION PLAN BOUNDARY
277.84 Acres**

A parcel of land lying within the County of Amador, State of California, and being also within those certain parcels of land conveyed to Edwin Lands LLC, a Delaware limited liability company by instrument recorded as Document No. 2006-0015249, and Greenrock Ranch Lands, LLC, a Delaware limited liability company, by instrument recorded as Document No. 2006-0015247, Amador County Records, and also within that certain parcel of land delineated and designated "ADJUSTED GREENROCK RANCH LANDS, LLC AREA WEST OF UNION PACIFIC RAILROAD 453.88 Acres" upon that certain official map entitled "RECORD OF SURVEY BOUNDARY LINE ADJUSTMENT for EDWIN LANDS, LLC, a Delaware limited liability company and GREENROCK RANCH LANDS, LLC, a Delaware limited liability company" and recorded in Book 62 of Maps and Plats at Pages 99 thru 101, Amador County Records, said parcel of land being more particularly described as follows:

Beginning at a point on the Southerly line of the hereinabove referred to "ADJUSTED GREENROCK RANCH LANDS, LLC AREA WEST OF UNION PACIFIC RAILROAD 453.88 Acres", from which point the Southeast corner thereof bears South 74°45'53" East 84.17 feet distant; thence, from said point of beginning, and leaving the Southerly line of said 453.88 acre parcel of land,

Course No.

- (1) North 00° 37' 17" West 563.17 feet; thence
- (2) North 89° 23' 02" East 279.02 feet; thence
- (3) South 00° 38' 10" East 225.73 feet to a point on the Southeasterly line of said 453.88 acre parcel of land; thence, leaving said Southeasterly line,
- (4) South 00° 38' 10" East 1,110.57 feet; thence
- (5) South 07° 15' 20" East 1,230.63 feet; thence
- (6) South 45° 03' 28" East 1,405.73 feet; thence
- (7) North 27° 43' 15" East 431.78 feet; thence
- (8) North 56° 40' 03" East 354.46 feet; thence

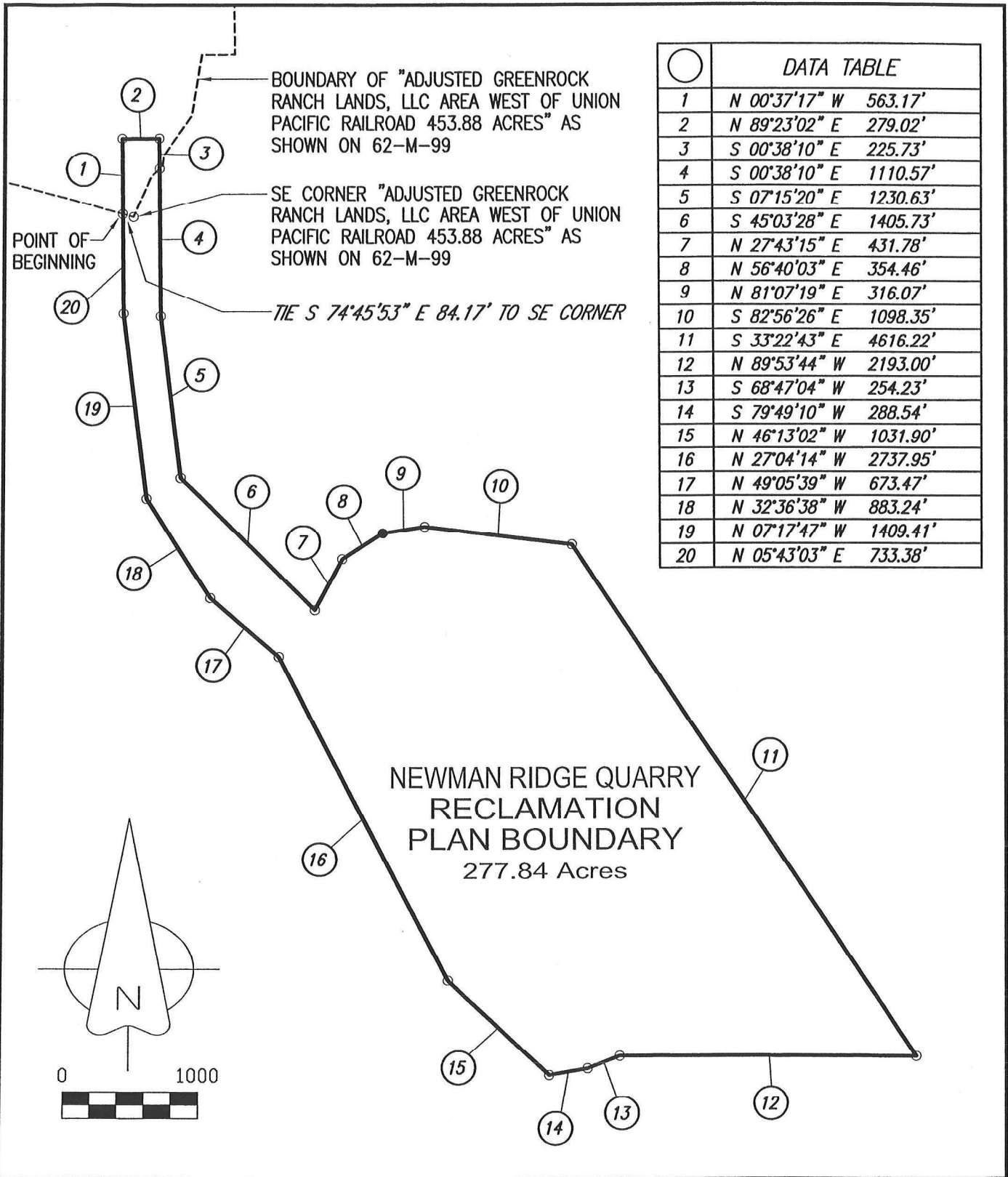
- (9) North 81° 07' 19" East 316.07 feet to a point on the Northerly line of the hereinabove referred to Greenrock Ranch Lands, LLC parcel of land; thence, along a portion of the Northerly line of said Greenrock Ranch Lands, LLC parcel of land,
- (10) South 82° 56' 26" East 1,098.35 feet; thence, leaving said Northerly line of said Greenrock Ranch Lands, LLC parcel of land,
- (11) South 33° 22' 43" East 4,616.22 feet; thence
- (12) North 89° 53' 44" West 2,193.00 feet; thence
- (13) South 68° 47' 04" West 254.23 feet; thence
- (14) South 79° 49' 10" West 288.54 feet; thence
- (15) North 46° 13' 02" West 1,031.90 feet; thence
- (16) North 27° 04' 14" West 2,737.95 feet; thence
- (17) North 49° 05' 39" West 673.47 feet; thence
- (18) North 32° 36' 38" West 883.24 feet; thence
- (19) North 07° 17' 47" West 1,409.41 feet; thence
- (20) North 05° 43' 03" East 733.38 feet to the point of beginning, and containing 277.84 acres of land, more or less.

The basis of bearings for the legal description above is referred to the hereinabove referenced official map recorded in Book 62 of Maps and Plats at Pages 99 thru 101.



Ciro L. Toma PLS 3570

EXHIBIT B

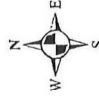


SHEET 1 OF 1 SHEETS	JOB NO.: 1210-06	DRAWN BY: GAW	SCALE: 1" = 1000'	DATE: 10.17.2012	<p align="center">EXHIBIT MAP NEWMAN RIDGE QUARRY RECLAMATION PLAN BOUNDARY BEING A PORTION OF THE RANCHO ARROYO SECO AMADOR COUNTY, CALIFORNIA</p>	<p>TOMA & ASSOCIATES INC. ENGINEERING - SURVEYING - PLANNING 41 Summit Street, Jackson, CA 95642 (209) 223-0156</p>	REVISIONS	BY

EXHIBIT C

Vicinity Map - Newman Ridge Quarry

- ⊕ Cities and Communities
- Transportation
- Roads
 - One Way Road
 - Primary Road
 - Secondary Road
 - County Route
 - State Highway
 - - Unimproved Road
- Administrative Boundaries
 - City Limits
 - Amador County Boundary



1" = 4608 ft

Aerial photography, if displayed,
© DigitalGlobe, Inc., All Rights Reserved

Notes



The County of Amador assumes no responsibility arising from use of this information. THE MAPS AND ASSOCIATED DATA ARE PROVIDED WITHOUT WARRANTY OF ANY KIND, expressed or implied, including but not limited to, the implied warranties of merchantability and fitness for a particular purpose. Do not make any business decisions based on this data before validating your decision with the appropriate County Office.

Amador County GIS Viewer
Amador County Information Technology Dept.
810 Court St, Jackson CA 95642

November 16, 2012

