

Requested by:  
**BOARD OF SUPERVISORS**  
Return to:  
**SURVEYING & ENGINEERING**

---

**BEFORE THE BOARD OF SUPERVISORS OF THE  
COUNTY OF AMADOR, STATE OF CALIFORNIA**

IN THE MATTER OF

RESOLUTION APPROVING ABANDONMENT )  
OF VARIOUS PUBLIC UTILITY EASEMENTS )  
FOR BASIL J. SANBORN AND TRACY SANBORN, ) RESOLUTION NO. 13-031  
CO-TRUSTEES OF THE BASIL J. AND )  
TRACY SANBORN REVOCABLE TRUST )  
U/A/D MARCH 29, 2005 )


BE IT RESOLVED by the Board of Supervisors of the County of Amador, State of California, that said Board does hereby approve the abandonment of various public utility easements for Basil J. Sanborn and Tracy Sanborn, Co-Trustees of the Basil J. and Tracy Sanborn Revocable Trust U/A/D March 29, 2005 as attached description in Exhibit "A".

The foregoing resolution was duly passed and adopted by the Board of Supervisors of the County of Amador at a regular meeting thereof, held on the 26th day of March, 2013, by the following vote:

AYES: Richard M. Forster, Theodore F. Novelli,  
Brian Oneto, John Plasse, and Louis D. Boitano


NOES: None

ABSENT: None

  
\_\_\_\_\_  
Chairman, Board of Supervisors

ATTEST:

JENNIFER BURNS, Clerk of the  
Board of Supervisors, Amador County  
California

  
\_\_\_\_\_  
Deputy

**EXHIBIT 'A'**

**EASEMENT ABANDONMENT  
(A portion of a 25' Setback, Utility & Parking Easement over Lot 36)  
(A.P.N. 026-172-007)**

All that real property situate in the County of Amador, State of California, described as follows:

A portion of that certain twenty five-foot (25') building setback area easement for light, air, snow storage, parking bays, graded slopes, drainage ditches, underground wires and conduits as shown on the Final Map of Kirkwood Meadows Unit No.1 filed for record July 1, 1970 in the office of Recorder, Amador County in Book 3 of Subdivision Maps at Page 30, more particularly described as follows:

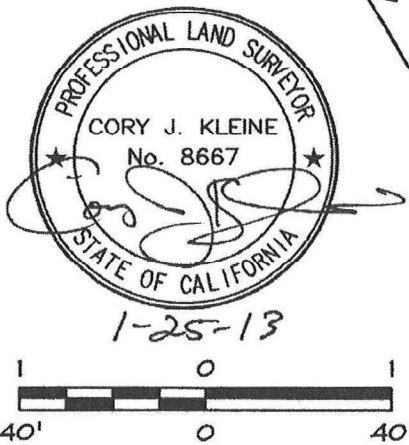
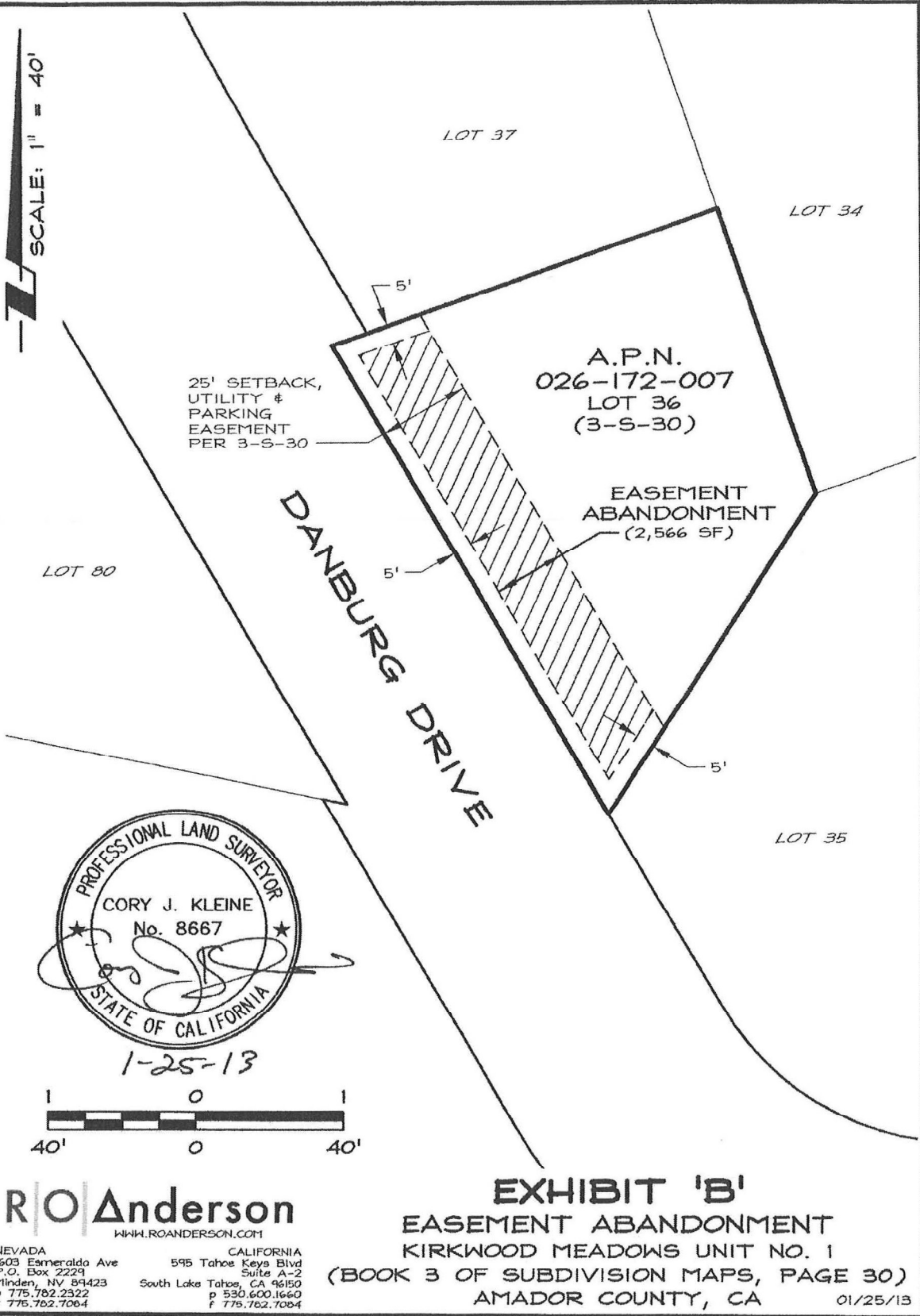
The westerly 25 feet of Lot 36 per said Final Map of Kirkwood Meadows Unit No.1, excepting therefrom the northerly, westerly and southerly 5 feet thereof.

The above-described area of abandonment contains 2,566 square feet, more or less.

Prepared By: Cory J. Kleine, PLS  
R.O. ANDERSON ENGINEERING, INC.  
P.O. Box 2229  
Minden, Nevada 89423



Y:\Client Files\1852\1852-00\CAD\Survey\Exhibits\1852-00\EXH-ABANDONMENT.dwg 1/25/2013 2:43:40 PM Cory J. Kleine



**R/O Anderson**  
 WWW.ROANDERSON.COM

NEVADA  
 1603 Esmeralda Ave  
 P.O. Box 2229  
 Minden, NV 89423  
 p 775.782.2322  
 f 775.782.7064

CALIFORNIA  
 595 Tahoe Keys Blvd  
 Suite A-2  
 South Lake Tahoe, CA 96150  
 p 530.600.1660  
 f 775.782.7064

**EXHIBIT 'B'**  
 EASEMENT ABANDONMENT  
 KIRKWOOD MEADOWS UNIT NO. 1  
 (BOOK 3 OF SUBDIVISION MAPS, PAGE 30)  
 AMADOR COUNTY, CA 01/25/13