

Requested By:  
**BOARD OF SUPERVISORS**  
When Recorded Return To:  
**SURVEYING & ENGINEERING**

---

**BEFORE THE BOARD OF SUPERVISORS OF THE  
COUNTY OF AMADOR, STATE OF CALIFORNIA**

IN THE MATTER OF

RESOLUTION APPROVING PARCEL MAP NO. 2752 )  
FOR JAMES B. TOWNSEND AS TRUSTEE, )  
LIVING TRUST OF JAMES B. TOWNSEND ) RESOLUTION NO. 10-089  
)  
AND ACCEPTING AND REJECTING )  
OFFERS OF DEDICATION )

WHEREAS, the Board of Supervisors of the County of Amador, State of California has determined that said map is in conformity with the requirements of the County of Amador; and


THEREFORE, BE IT RESOLVED by the Amador County Board of Supervisors that said Board hereby approves Parcel Map No. 2752 for James B. Townsend as Trustee, Living Trust of James B. Townsend; and

BE IT RESOLVED by the Board of Supervisors of the County of Amador that all offers of dedication for public utility easements appearing on Parcel Map No. 2752, by Steven W. Brown, Land Surveyor, dated February, 2010, be and hereby are accepted; and

BE IT FURTHER RESOLVED that all others offers of dedication appearing on said map be and hereby are rejected at this time, subject to subsequent acceptance by future resolution of this Board.

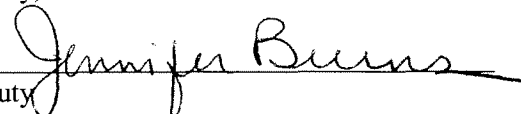
The foregoing resolution was duly passed and adopted by the Board of Supervisors of the County of Amador at a regular meeting thereof held on the 8th day of June, 2010, by the following vote:

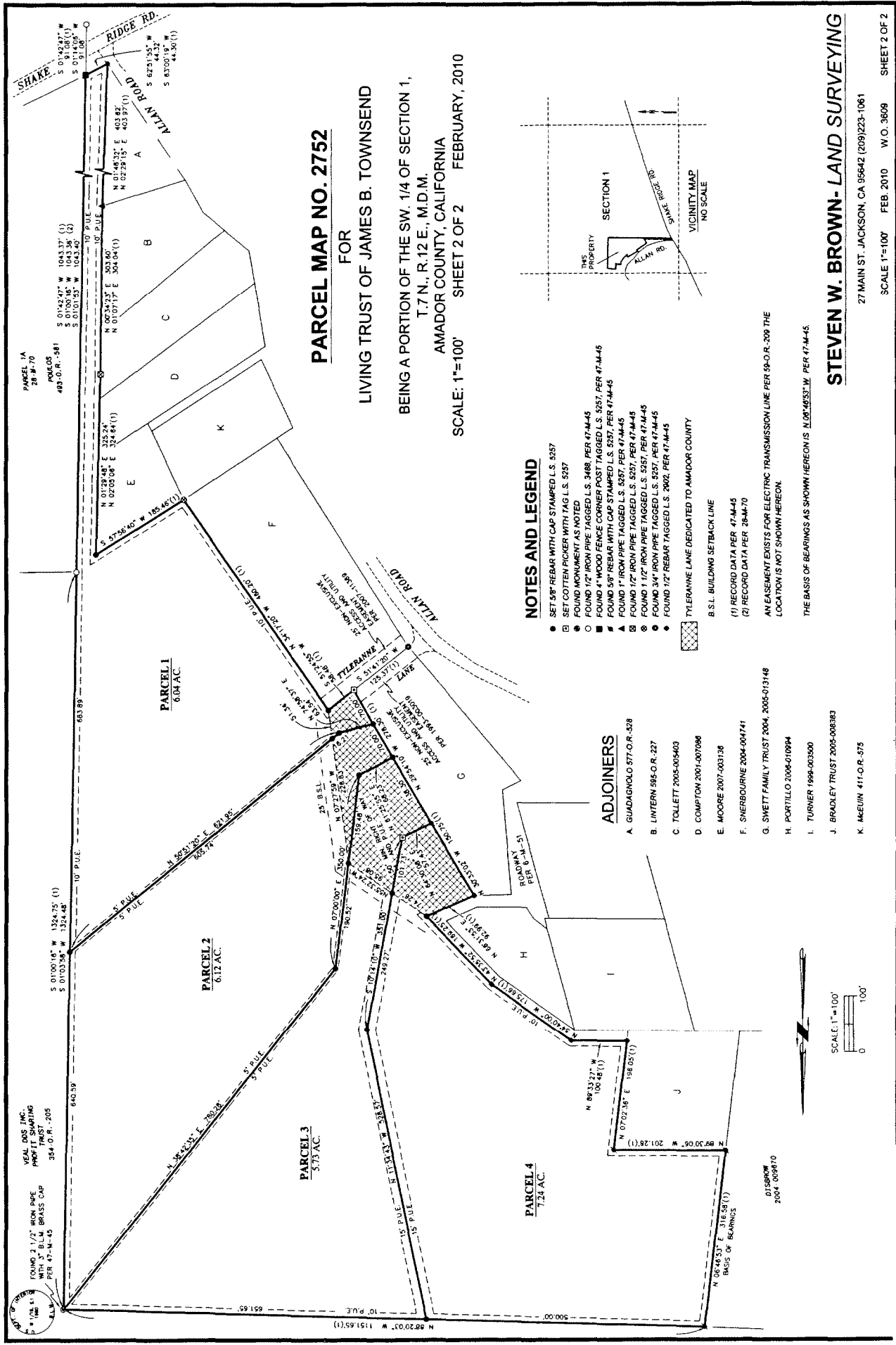
AYES: Brian Oneto, John Plasse, Richard M. Forster, Theodore F. Novelli, and Louis D. Boitano

  
\_\_\_\_\_  
Chairman, Board of Supervisors

ATTEST

JENNIFER BURNS, Clerk of  
the Board of Supervisors, Amador  
County, California

  
Deputy



# PARCEL MAP NO. 2752

FOR  
LIVING TRUST OF JAMES B. TOWNSEND  
BEING A PORTION OF THE SW 1/4 OF SECTION 1,  
T.7N., R.12E., M.D.M.  
AMADOR COUNTY, CALIFORNIA  
SCALE: 1"=100' SHEET 2 OF 2 FEBRUARY, 2010

- ### NOTES AND LEGEND
- SET 5/8" REBAR WITH CAP STAMPED L.S. 9357
  - SET COTTEN PICKER WITH TAG L.S. 9357
  - FOUND MONUMENTS TAGGED
  - FOUND 1 1/2" IRON PIPE TAGGED L.S. 3488 PER 47-44-45
  - FOUND 1 1/2" WOOD FENCE CORNER POST TAGGED L.S. 9357 PER 47-44-45
  - ▲ FOUND 5/8" REBAR WITH CAP STAMPED L.S. 9357 PER 47-44-45
  - ▲ FOUND 1" IRON PIPE TAGGED L.S. 9357 PER 47-44-45
  - ▲ FOUND 1 1/2" IRON PIPE TAGGED L.S. 9357 PER 47-44-45
  - FOUND 3/4" IRON PIPE TAGGED L.S. 9357 PER 47-44-45
  - FOUND 1/2" REBAR TAGGED L.S. 9357 PER 47-44-45
  - ▨ TYLENAPPE LANE DEDICATED TO AMADOR COUNTY  
B.S.L. BUILDING SETBACK LINE

### ADJOINERS

- A. GUADAGNOLLO 577-O.R.-378
- B. LINTERN 595-O.R.-227
- C. TOLLETT 2005-005403
- D. COMPTON 2001-007096
- E. MOORE 2007-003136
- F. SNERBOURNE 2004-004741
- G. SWETT FAMILY TRUST 2004, 2005-013148
- H. PORTILLO 2004-010994
- I. TURNER 1998-003500
- J. BRADLEY TRUST 2005-006383
- K. MCEVIN 411-O.R.-575



ON BASIS OF BEARINGS AS SHOWN HEREON IS N. 06° 46' 53" W. PER 47-44-45.

(1) RECORD DATA PER 47-44-45  
(2) RECORD DATA PER 28-44-70

AN EASEMENT EXISTS FOR ELECTRIC TRANSMISSION LINE PER 98-O.R.-209 THE LOCATION IS NOT SHOWN HEREON.