

BEFORE THE BOARD OF SUPERVISORS OF THE  
COUNTY OF AMADOR, STATE OF CALIFORNIA

IN THE MATTER OF:

RESOLUTION AMENDING THE LAND USE )  
ELEMENT OF THE AMADOR COUNTY GENERAL )  
PLAN FROM C, COMMERCIAL; R-L, RESIDENTIAL )  
LOW DENSITY; AND R-S, RESIDENTIAL SUBURBAN )  
TO R-L, RESIDENTIAL LOW DENSITY; R-M, )  
RESIDENTIAL MEDIUM; AND P-S, PUBLIC SERVICE )  
FOR THE PINE ACRES NORTH PROPERTY )  
LOCATED IN THE PINE GROVE AREA OF AMADOR )  
COUNTY )

RESOLUTION NO. 10-116

**WHEREAS**, the County received an application from the property owner of a parcel located in the Pine Grove area of Amador County to change the General Plan, Land Use Element classification from C, Commercial, R-L, Residential Low Density, and R-S, Residential Suburban to R-L, Residential Low Density, R-M, Residential Medium, and P-S, Public Services; and

**WHEREAS**, the Amador County Planning Commission did conduct a public hearing on the application and recommended approval of the request with findings the proposed uses are consistent with other existing uses in the area, the General Plan Amendment will not have a significant adverse effect on the environment in the area; and

**WHEREAS**, the Amador County Board of Supervisors did also conduct a public hearing on the application and agreed with the Planning Commission findings and recommendations;

**NOW, THEREFORE, BE IT HEREBY RESOLVED** that the Board of Supervisors of the County of Amador does hereby amend the General Plan, Land Use Element classification map for the Pine Acres North property from C, Commercial, R-L, Residential Low Density, and R-S, Residential Suburban to R-L, Residential Low Density for Lots 1-57 and 59-65, R-M, Residential Medium for the apartment lot (Lot 58), and P-S, Public Services for Parcels A, B, C, D, and E as shown on the attached map, Attachment "A". This General Plan Amendment shall become effective upon the recordation of the final Subdivision Map No. 147 (Attachment "B").

The foregoing resolution was duly passed and adopted by the Board of Supervisors in the County of Amador at a regular meeting thereof, held on the 13th day of July, 2010, by the following vote:

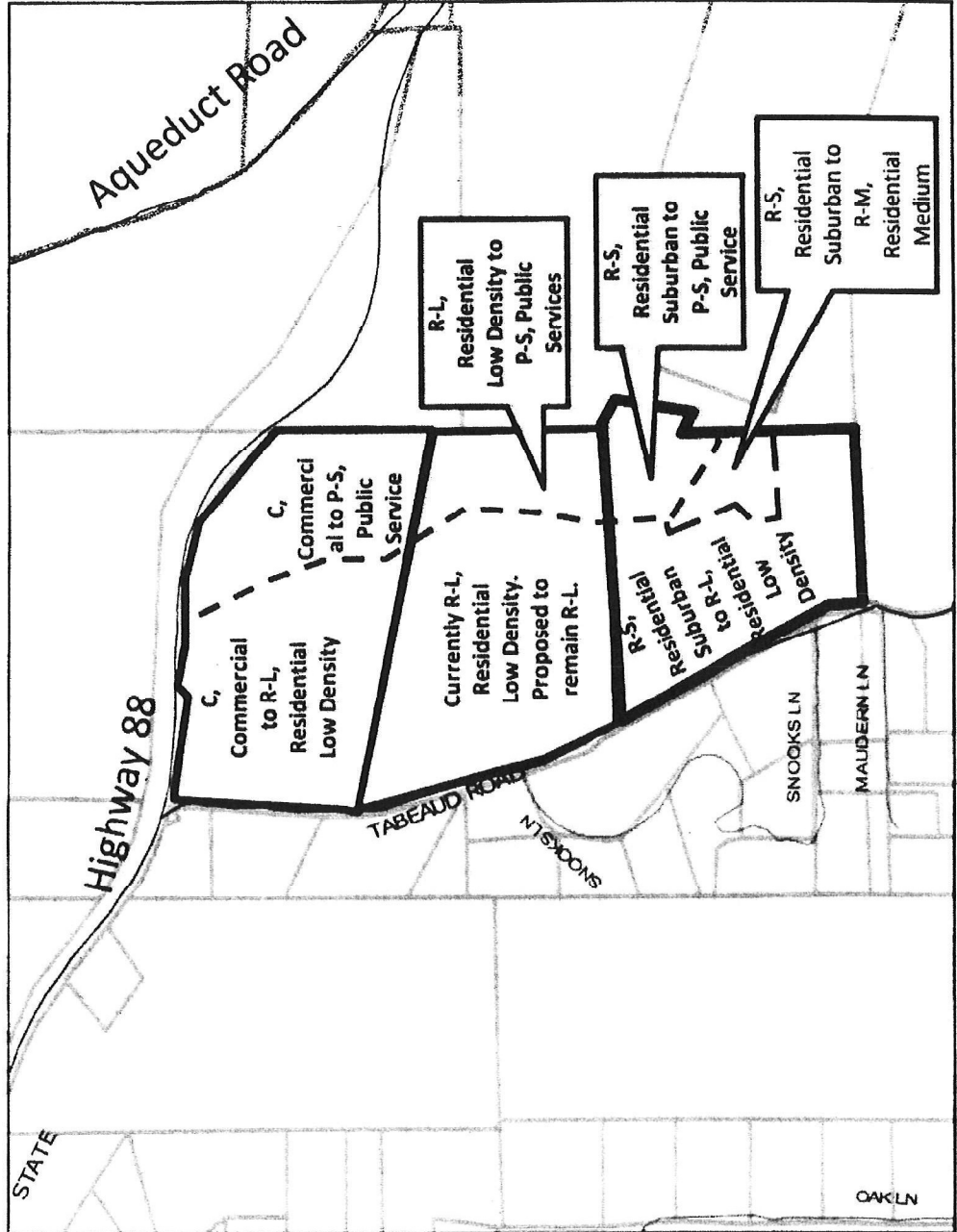
**AYES:** Richard M. Forster, John Plasse, Brian Oneto  
**NOES:** Theodore Novelli, Louis D. Boitano  
**ABSENT:** None

  
CHAIRMAN, Board of Supervisors

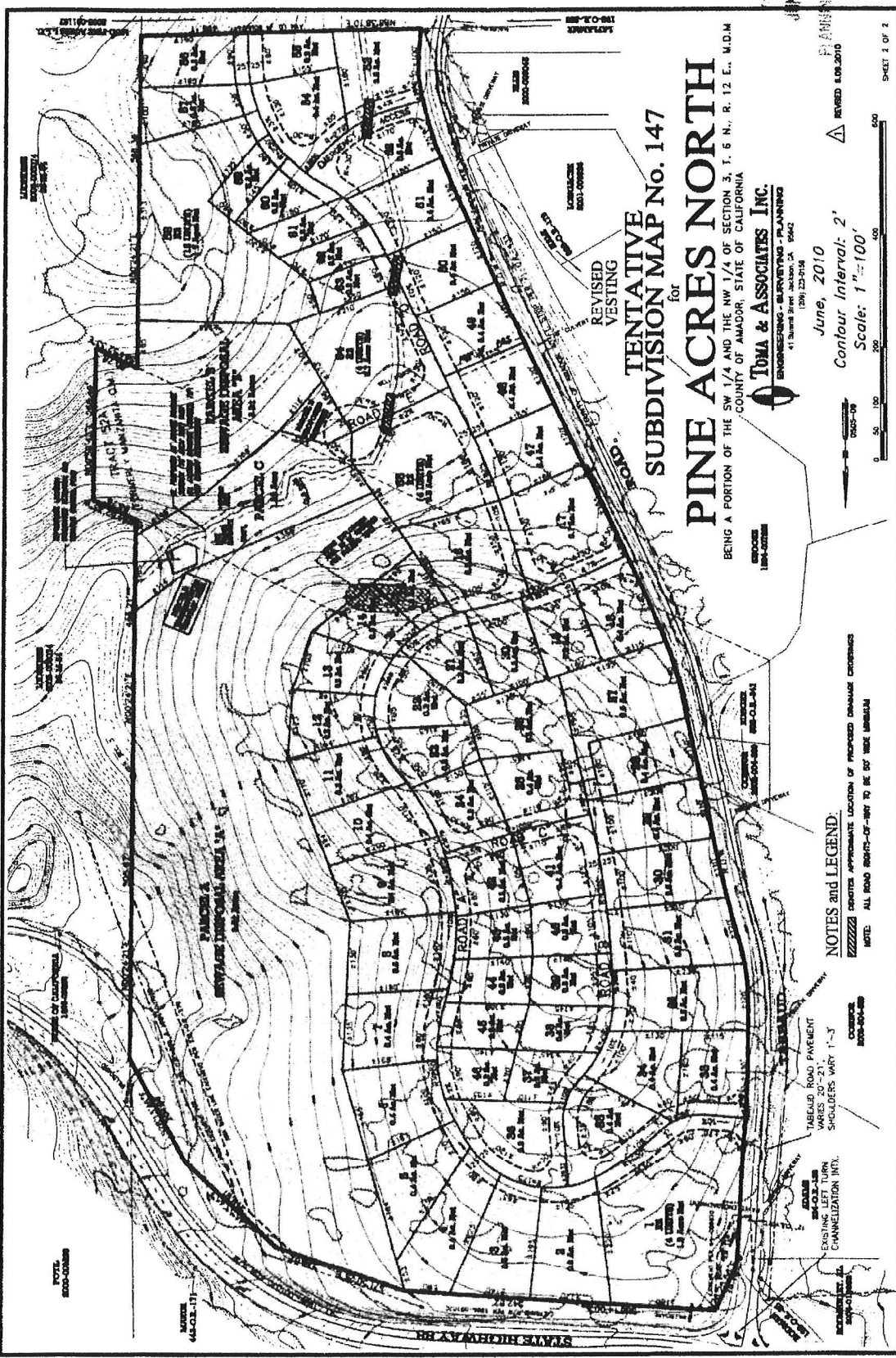
ATTEST:  
JENNIFER BURNS, Clerk of the  
Board of Supervisors, Amador County,  
California



# Attachment "A"



# Attachment "B"



## TENTATIVE SUBDIVISION MAP No. 147

### for PINE ACRES NORTH

BEING A PORTION OF THE SW 1/4 AND THE NW 1/4 OF SECTION 3, T. 6 N., R. 12 E., M.D.M.  
COUNTY OF AMADOR, STATE OF CALIFORNIA

**Tom & Associates Inc.**  
ENGINEERING - SURVEYING - PLANNING  
1100 SAN JOSE BLVD., SUITE 200  
SAN JOSE, CALIFORNIA 95128

June, 2010

Contour Interval: 2'  
Scale: 1" = 100'

REVISIONS  
REVISION NO. 1  
DATE 6/09/2010

PLANNING DEPARTMENT  
JUN 10 2010

SHEET 1 OF 2

#### NOTES and LEGEND:

██████████ INDICATES APPROXIMATE LOCATION OF PROPOSED DRAINAGE CHANNELS  
NOTE: ALL ROAD RIGHTS-OF-WAY TO BE 60' SIDE BUREAU

TABLED ROAD PAYMENT  
VARIES 20'-21'  
SLOPERS VARY 1'-3'

EXISTING LEFT TURN  
CHANNELIZATION INTD.

CONCRETE  
200'-200'-20'