

Requested By:
BOARD OF SUPERVISORS
Return to:
SURVEYING & ENGINEERING

**BEFORE THE BOARD OF SUPERVISORS OF THE
COUNTY OF AMADOR, STATE OF CALIFORNIA**

IN THE MATTER OF:

RESOLUTION APPROVING THE FINAL)
SUBDIVISION MAP AND ACCEPTING) RESOLUTION NO. 10-162
AND REJECTING OFFERS OF)
DEDICATION APPEARING ON)
FINAL SUBDIVISION MAP NO. 135)
SHERRILL SUBDIVISION, PHASE 1)

WHEREAS, the Amador County Board of Supervisors has determined that said map is in conformity with the requirements of the County of Amador.

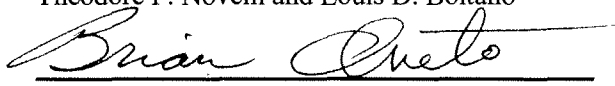
THEREFORE, BE IT RESOLVED by the Amador County Board of Supervisors that said Board hereby approves Final Subdivision Map No. 135 Sherrill Subdivision, Phase 1; and

BE IT RESOLVED by the Board of Supervisors of the County of Amador that all offers of dedication for Public Utility Easements and Shake Ridge Road appearing on Final Subdivision Map No. 135 Sherrill Subdivision, Phase 1, by Gary L. Milano, Land Surveyor, dated December, 2008, be and hereby are accepted; and

BE IT FURTHER RESOLVED that all other offers of dedication appearing on said map be and hereby are rejected at this time, subject to subsequent acceptance by future Resolution of this Board.

The foregoing resolution was duly passed and adopted by the Board of Supervisors of the County of Amador at a regular meeting thereof held on the 9th day of November, 2010, by the following vote:

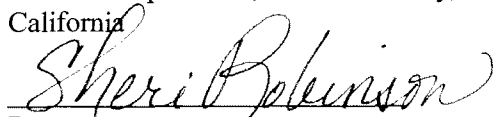
AYES: Supervisors Brian Oneto, John Plasse, Richard M. Forster,
Theodore F. Novelli and Louis D. Boitano



Chairman, Board of Supervisors

ATTEST:

JENNIFER BURNS, Clerk of the
Board of Supervisors, Amador County,
California



Deputy

TERRA FIRMA

1430 PROSPECT DRIVE STE 10-207
JACKSON, CALIFORNIA 95642
1-209-256-2687

**SUBDIVISION MAP NO. 135
SHERRILL SUBDIVISION, PHASE 1**

BEING A PORTION OF THE N.E. 1/4 OF SECTION 23 AND THE
S.W. 1/4 AND NW 1/4 OF SECTION 24, T. 7 N., R. 11 E., M.O.B.M.,
AMADOR COUNTY, CALIFORNIA

SCALE: 1" = 300'

DECEMBER 2008

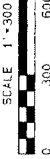
LEGEND

SYMBOL	DESCRIPTION
●	INDICATES 5/8" REBAR TAGGED L.S. 7386 SET THIS SURVEY
△	INDICATES MONUMENT FOUND AS NOTED ON PLAT
□	INDICATES 5/8" REBAR TAGGED L.S. 4659 FOUND PER 50-M 99
○	INDICATES 3/4" IRON PIPE TAGGED L.S. 9570 FOUND
⊗	INDICATES 3/4" IRON PIPE FOUND AS NOTED ON PLAT
○	INDICATES CALCULATED POINT NOTHING FOUND OR SET

INDICATES AREA DEDICATED TO AMADOR COUNTY FOR
ROADWAY PURPOSES THIS MAP

U.S.L. INDICATES BUILDING SETBACK LINE

THE BASIS OF BEARINGS USED FOR THIS SURVEY
IS THE WEST LINE OF THE NW 1/4 OF THE NW 1/4
OF SECTION 24 PER 49-M-41 BEING N00°46'44"W



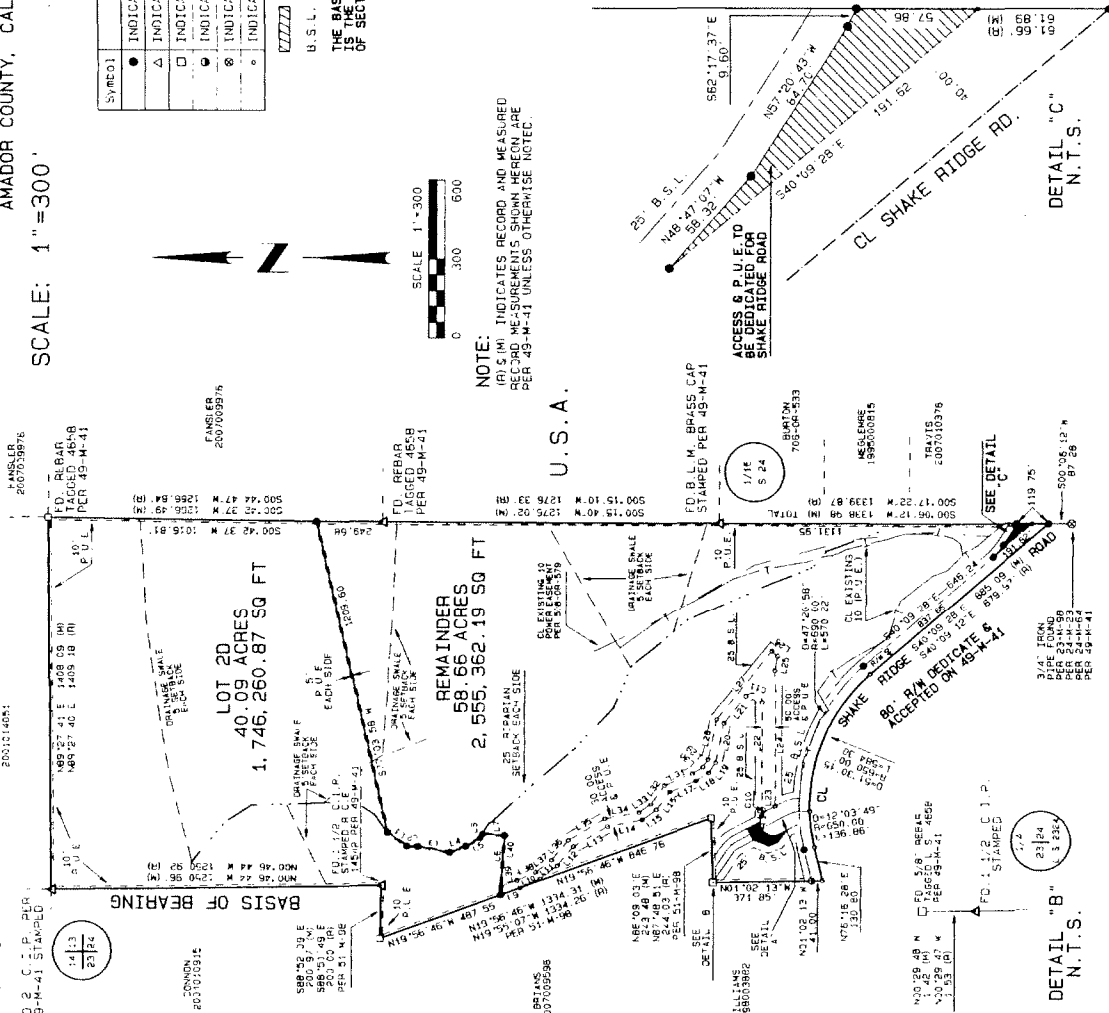
NOTE: IRIS (M) INDICATES RECORD AND MEASURED
BOUND MEASUREMENTS SHOWN THEREON ARE
PER 49-M-41 UNLESS OTHERWISE NOTED.

LINE TABLE

LINE	BEARING	DIST.	LINE	BEARING	DIST.
L1	S34°59'07"W	89.78	L21	S50°56'59"E	128.50
L2	N00°00'00"W	133.41	L22	S27°26'00"E	43.10
L3	N00°00'00"W	133.41	L23	S27°26'00"E	43.10
L4	S27°26'00"E	43.10	L24	S00°00'00"E	100.00
L5	S00°00'00"E	100.00	L25	S78°25'13"E	50.91
L6	S00°00'00"E	100.00	L26	S60°56'59"E	91.00
L7	S00°00'00"E	100.00	L27	S00°00'00"E	100.00
L8	N00°00'00"W	133.41	L28	N78°17'18"E	132.05
L9	S19°59'46"E	79.46	L29	N05°53'12"E	35.70
L10	S21°56'30"E	82.32	L30	N02°10'40"W	46.78
L11	S37°08'33"E	82.46	L31	N21°45'51"W	112.76
L12	S44°59'07"W	89.78	L32	N36°57'45"W	87.72
L13	S50°56'59"E	91.00	L33	N45°51'14"E	131.48
L14	S57°08'33"E	82.46	L34	N50°56'59"E	100.00
L15	S60°56'59"E	91.00	L35	S30°26'43"W	159.99
L16	S68°25'13"E	50.91	L36	N49°56'59"W	97.66
L17	S78°17'18"E	132.05	L37	N37°08'33"W	75.52
L18	S87°10'40"E	15.79	L38	N23°16'31"W	77.90
L19	S95°53'12"E	47.34	L39	N19°25'43"W	84.38
L20	S76°17'18"E	131.00	L40	N08°19'37"E	182.25
			L41	N01°39'43"W	1.81
			L42	N01°39'43"W	1.81
			L43	N01°39'43"W	1.81

CURVE TABLE

CURVE	BEARING	RADIUS	CHORD	CHORD BEARING	ANGLE
C1	S28°03'53"	100.00	100.00	S28°03'53"	90°
C2	S28°03'53"	100.00	100.00	S28°03'53"	90°
C3	S28°03'53"	100.00	100.00	S28°03'53"	90°
C4	S28°03'53"	100.00	100.00	S28°03'53"	90°
C5	S28°03'53"	100.00	100.00	S28°03'53"	90°
C6	S28°03'53"	100.00	100.00	S28°03'53"	90°
C7	S28°03'53"	100.00	100.00	S28°03'53"	90°
C8	S28°03'53"	100.00	100.00	S28°03'53"	90°
C9	S28°03'53"	100.00	100.00	S28°03'53"	90°
C10	S28°03'53"	100.00	100.00	S28°03'53"	90°
C11	S28°03'53"	100.00	100.00	S28°03'53"	90°



DETAIL "B" N.T.S.

DETAIL "C" N.T.S.

DETAIL "A" N.T.S.

DETAIL "D" N.T.S.

DETAIL "E" N.T.S.