

Rapini Merger!
e.a.

October 16, 2023

TO: The Honorable Board of Supervisors

FROM: Roger R. Pitto, County Surveyor

SUBJECT: Del Rapini Construction, Inc. a California Corporation, Certificate of Merger Lots 21 and 22

Dear Board Members:

The subject agenda item is a public hearing for an abandonment of easement in relation to a request for a Certificate of Merger for Del Rapini Construction, Inc. a California Corporation. The properties are Lots 21 and 22 of Pine Grove Bluffs, Phase 1, as recorded in Book 9 of Subdivision Maps at Page 53. Assessor's Parcel No.'s 030-740-011 and 030-740-012. Shown in the "After" Exhibit, merging the parcels and abandoning the easement is requested by Del Rapini Construction, Inc. a California Corporation for the purpose of having additional area for a buildable lot. County Departments and Amador Water Agency have reviewed the concept. There are no known issues with the concept.

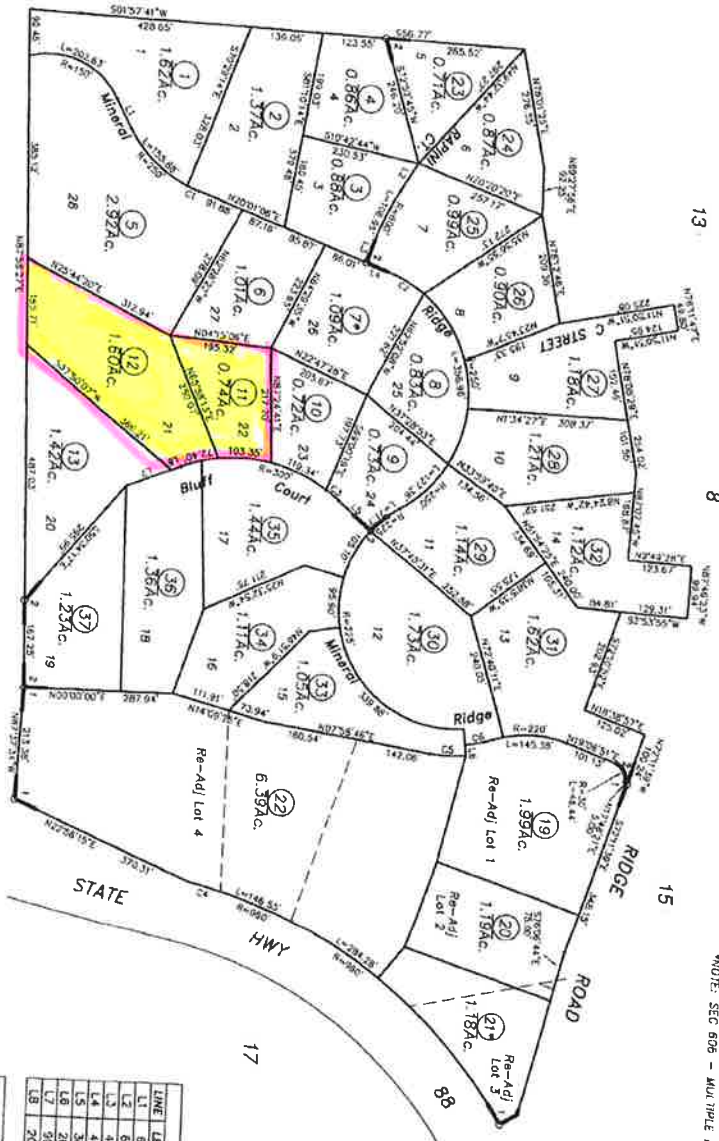
RECOMMENDATION:

Please adopt the resolutions approving the abandonment and the merger.

POR. SEC. 32 & 33 T.7N., R.12E., M.D.B. & M. TAX AREA CODE

30-74

NOTE: SEC 606 - MULTIPLE REVENUE DISTRICTS



Map changes become effective with the 2017-2018 roll year. Parcels are subject to change prior to the roll year on each July 1.

IMPORTANT NOTE: This map was prepared for property tax assessment purposes only. It is assumed that the property is assessed as described. The assessor's liability is assumed for the accuracy of the data delineated herein.

- 1- R.M.Bk. 9, Sub-Pg. 53 (8/8/2008) Pin Down Bluffs
- 2- R.M.Bk. 64, Pg. 13 (8/8/07/14)
- 3- R.M.Bk. 9, Sub-Pg. 71 (02/04/19) MTC ABOVE BLUFFS PHASE 2

NOTE - Assessor's Block Numbers Shown in Ellipses. Assessor's Parcel Numbers Shown in Circles.

LINE	LENGTH	BEARING
L1	64.18	N81°15'E
L2	62.53	N59°44'E
L3	46.39	N65°08'E
L4	46.92	N20°01'E
L5	36.24	N31°28'E
L6	20.24	S21°42'E
L7	90.44	S21°42'E
L8	20.00	S83°18'30"W

LINE	CURVE TABLE
C1	23.55
C2	78.89
C3	31.83
C4	65.92
C5	70.40
C6	51.67

(37)

Assessor's Map Bk. 30, Pg. 74
County of Amador, Calif.

FINAL SUBDIVISION MAP No. 123 PINE GROVE BLUFFS

PHASE I
DEL. RAPINI CONSTRUCTION, INC., a California Corporation
2003015687 and 2005012391

BEING A PORTION OF THE S.W. 1/4 SECTION 33 AND THE S.E. 1/4 SECTION 32,
T. 7 N., R. 12 E., M.D.M.,
COUNTY OF AMADOR, STATE OF CALIFORNIA

TOMA & ASSOCIATES, INC.
ENGINEERING - SURVEYING - PLANNING
41 Summit Street, Suite 200, Colusa, CA 95622
(916) 559-1910

Scale: 1" = 100'

January, 2008

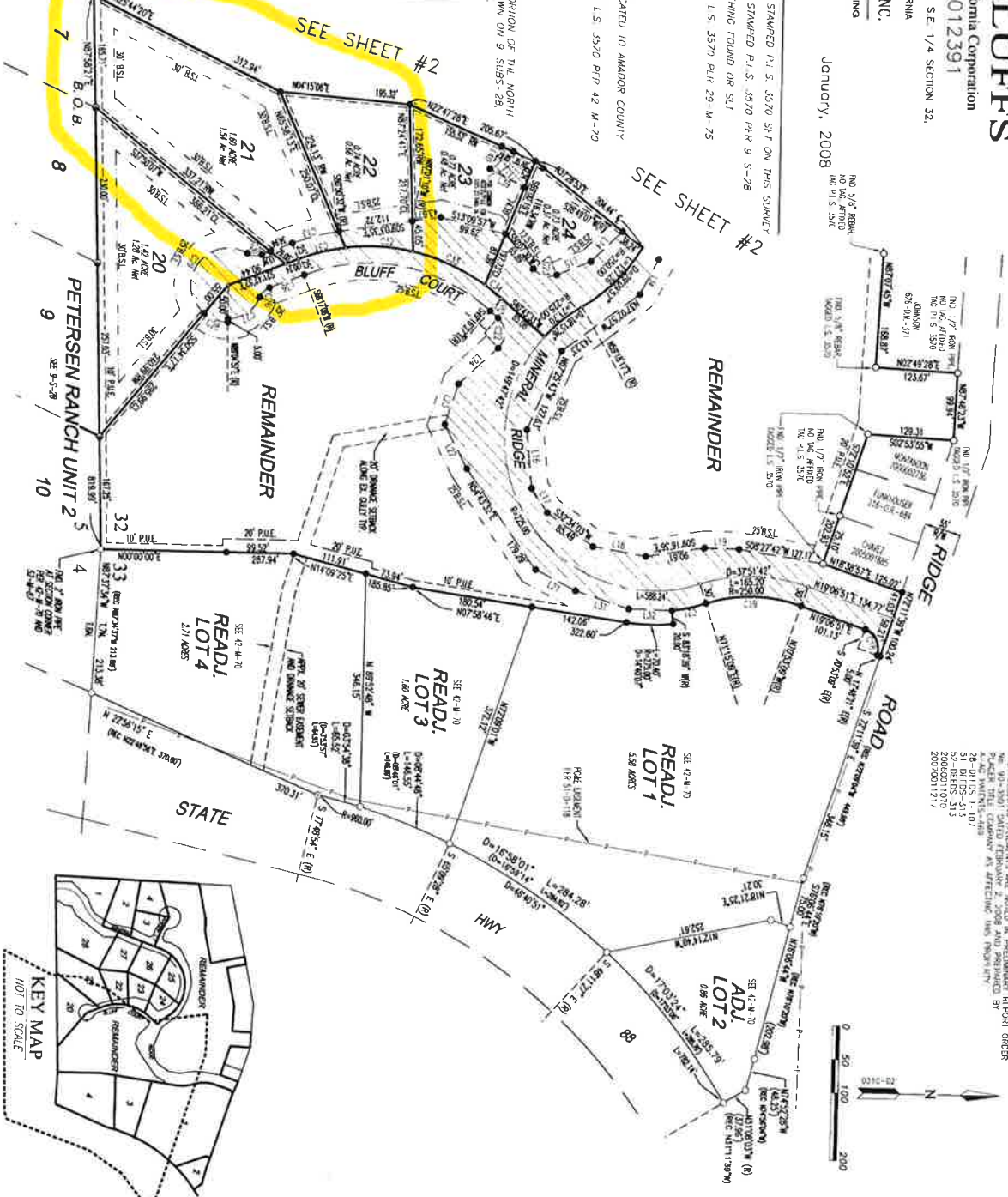
NOTES & LEGEND

- DENOTES 3/4" REBAR WITH PLASTIC CAP STAMPED P.I.S. 3570 SET ON THIS SURFACE
- DENOTES 3/4" REBAR WITH PLASTIC CAP STAMPED P.I.S. 3570 PER 9 S--78
- DENOTES A CALCULATED POINT ONLY, NOTHING FOUND OR SET
- DENOTES FOUND 1/2" IRON PIPE TAPPED I.S. 3570 PER 29 M-75
- DENOTES BUILDING SETBACK LINE
- DENOTES PUBLIC UTILITY EASEMENT
- DENOTES PRIVATE ACCESS & P.U.E.
- DENOTES ACCESS AND P.U.E. 10' BE DEDICATED TO AMADOR COUNTY
- DENOTES FOUND 5/8" STEEL ROD TAPPED I.S. 3570 PER 42 M-70
- DENOTES HFCORU DATA IPR 42-M-70

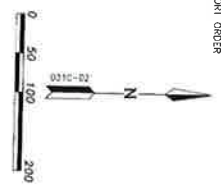
BOB.
BASED UP RECORDS IS REFERRED TO A PORTION OF THE NORTH
SECTION 32, T. 7 N., R. 12 E., M.D.M., AS SHOWN ON 9 SUBS-28.
THE REMAINDER OF WHICH IS IN 8758727 F.

CURVE	LENGTH	POINTS	DELTA
C1	31.96	35.00	0-38703.23
C2	24.24	35.00	0-38703.23
C3	25.95	70.00	0-38703.23
C4	42.50	70.00	0-38703.23
C5	42.50	70.00	0-38703.23
C6	27.76	70.00	0-38703.23
C7	167.42	75.00	0-12723.95
C8	167.42	75.00	0-12723.95
C9	167.42	75.00	0-12723.95
C10	167.42	75.00	0-12723.95
C11	167.42	75.00	0-12723.95
C12	167.42	75.00	0-12723.95
C13	167.42	75.00	0-12723.95
C14	167.42	75.00	0-12723.95
C15	167.42	75.00	0-12723.95
C16	167.42	75.00	0-12723.95
C17	167.42	75.00	0-12723.95
C18	167.42	75.00	0-12723.95
C19	167.42	75.00	0-12723.95
C20	167.42	75.00	0-12723.95
C21	167.42	75.00	0-12723.95
C22	167.42	75.00	0-12723.95
C23	167.42	75.00	0-12723.95
C24	167.42	75.00	0-12723.95
C25	167.42	75.00	0-12723.95
C26	167.42	75.00	0-12723.95
C27	167.42	75.00	0-12723.95
C28	167.42	75.00	0-12723.95
C29	167.42	75.00	0-12723.95
C30	167.42	75.00	0-12723.95
C31	167.42	75.00	0-12723.95
C32	167.42	75.00	0-12723.95
C33	167.42	75.00	0-12723.95
C34	167.42	75.00	0-12723.95
C35	167.42	75.00	0-12723.95
C36	167.42	75.00	0-12723.95
C37	167.42	75.00	0-12723.95
C38	167.42	75.00	0-12723.95
C39	167.42	75.00	0-12723.95
C40	167.42	75.00	0-12723.95
C41	167.42	75.00	0-12723.95
C42	167.42	75.00	0-12723.95
C43	167.42	75.00	0-12723.95
C44	167.42	75.00	0-12723.95
C45	167.42	75.00	0-12723.95
C46	167.42	75.00	0-12723.95
C47	167.42	75.00	0-12723.95
C48	167.42	75.00	0-12723.95
C49	167.42	75.00	0-12723.95
C50	167.42	75.00	0-12723.95
C51	167.42	75.00	0-12723.95
C52	167.42	75.00	0-12723.95
C53	167.42	75.00	0-12723.95
C54	167.42	75.00	0-12723.95
C55	167.42	75.00	0-12723.95
C56	167.42	75.00	0-12723.95
C57	167.42	75.00	0-12723.95
C58	167.42	75.00	0-12723.95
C59	167.42	75.00	0-12723.95
C60	167.42	75.00	0-12723.95
C61	167.42	75.00	0-12723.95
C62	167.42	75.00	0-12723.95
C63	167.42	75.00	0-12723.95
C64	167.42	75.00	0-12723.95
C65	167.42	75.00	0-12723.95
C66	167.42	75.00	0-12723.95

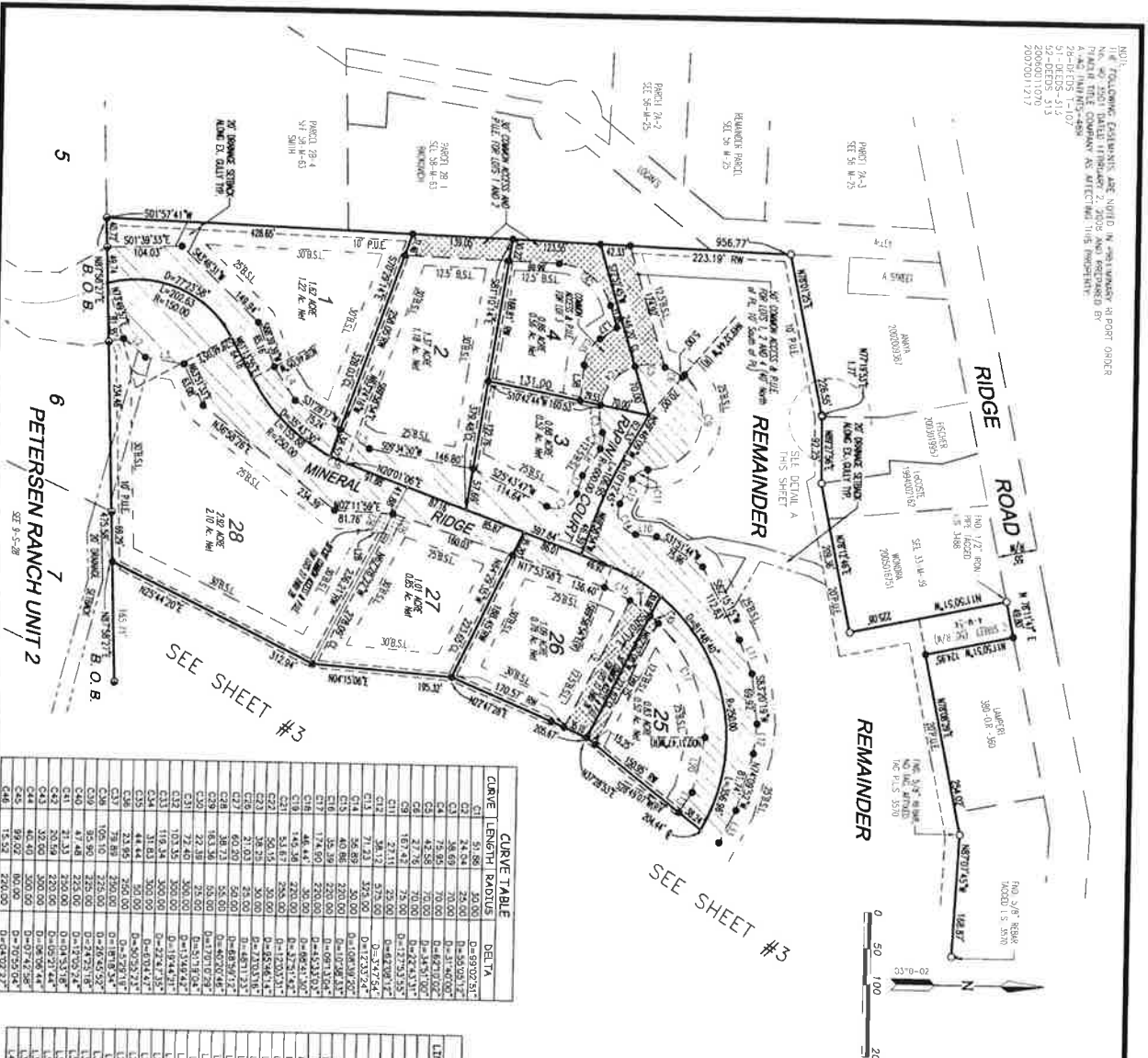
LINE	LENGTH	BEARING
L1	28.07	N01°22'47"W
L2	40.01	N89°08'11"E
L3	54.33	N09°23'03"E
L4	45.11	N69°58'37"E
L5	112.72	N12°18'17"E
L6	44.00	N55°32'05"W
L7	200.18	S62°52'08"W
L8	21.93	N02°17'06"E
L9	48.83	N88°13'09"E
L10	33.17	N82°52'05"E
L11	33.17	N82°52'05"E
L12	64.73	N44°45'30"W
L13	54.58	N42°55'46"W
L14	86.76	N84°00'42"E
L15	60.58	N61°50'08"E
L16	80.58	N61°50'08"E
L17	52.29	N62°51'47"E
L18	78.00	S77°51'47"E
L19	68.34	N26°55'05"E
L20	73.63	N61°19'54"E
L21	73.63	N61°19'54"E
L22	73.63	N61°19'54"E
L23	73.63	N61°19'54"E
L24	73.63	N61°19'54"E
L25	73.63	N61°19'54"E
L26	73.63	N61°19'54"E
L27	73.63	N61°19'54"E
L28	73.63	N61°19'54"E
L29	73.63	N61°19'54"E
L30	73.63	N61°19'54"E
L31	73.63	N61°19'54"E
L32	73.63	N61°19'54"E
L33	73.63	N61°19'54"E
L34	73.63	N61°19'54"E
L35	73.63	N61°19'54"E
L36	73.63	N61°19'54"E
L37	73.63	N61°19'54"E
L38	73.63	N61°19'54"E
L39	73.63	N61°19'54"E
L40	73.63	N61°19'54"E



NOTE:
ALL DIMENSIONS INDICATED ARE NOT TO BE PRELIMINARY BEFORE ORDER
THE 90% DEVELOPMENT PLAN SHALL BE PREPARED BY
PETERSEN RANCH UNIT 2
28' WIDE EASEMENT
51' B.I.D.S. 315
52' G.E.S. 315
2007001127



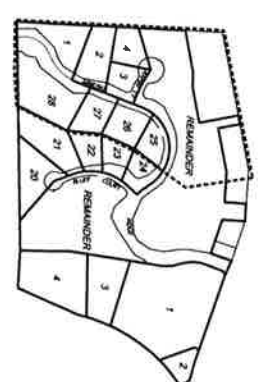
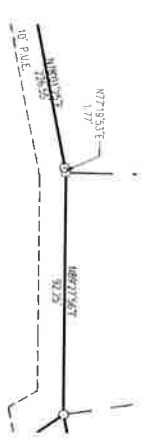
NOTE: FOLLOWING EXHIBITS ARE NOTED IN PARAGRAPH 31 OF THE ORDER:
 N.A. 40, 2004 DATED FEBRUARY 2, 2004 AND RECORDED BY
 A.M. HAINES COMPANY AS EFFECTIVE 1/15/05 (IMPDET)
 26-B-103-1-107
 26-B-103-1-107
 26-B-103-1-107
 2000011770
 2000011771



CURVE	LENGTH	RADIUS	DELTA
C1	51.80	25.00	D=99.0231
C2	24.94	25.00	D=49.5116
C3	36.69	70.00	D=71.4070
C4	75.38	70.00	D=142.8140
C5	42.50	70.00	D=71.4070
C6	167.42	75.00	D=262.5312
C7	167.42	75.00	D=262.5312
C8	21.11	25.00	D=49.5116
C9	36.17	375.00	D=723.754
C10	71.23	375.00	D=1447.508
C11	46.89	30.00	D=104.7242
C12	46.89	30.00	D=104.7242
C13	46.89	30.00	D=104.7242
C14	46.89	30.00	D=104.7242
C15	46.89	30.00	D=104.7242
C16	46.89	30.00	D=104.7242
C17	46.89	30.00	D=104.7242
C18	46.89	30.00	D=104.7242
C19	46.89	30.00	D=104.7242
C20	46.89	30.00	D=104.7242
C21	46.89	30.00	D=104.7242
C22	46.89	30.00	D=104.7242
C23	46.89	30.00	D=104.7242
C24	46.89	30.00	D=104.7242
C25	46.89	30.00	D=104.7242
C26	46.89	30.00	D=104.7242
C27	46.89	30.00	D=104.7242
C28	46.89	30.00	D=104.7242
C29	46.89	30.00	D=104.7242
C30	46.89	30.00	D=104.7242
C31	46.89	30.00	D=104.7242
C32	46.89	30.00	D=104.7242
C33	46.89	30.00	D=104.7242
C34	46.89	30.00	D=104.7242
C35	46.89	30.00	D=104.7242
C36	46.89	30.00	D=104.7242
C37	46.89	30.00	D=104.7242
C38	46.89	30.00	D=104.7242
C39	46.89	30.00	D=104.7242
C40	46.89	30.00	D=104.7242
C41	46.89	30.00	D=104.7242
C42	46.89	30.00	D=104.7242
C43	46.89	30.00	D=104.7242
C44	46.89	30.00	D=104.7242
C45	46.89	30.00	D=104.7242
C46	46.89	30.00	D=104.7242
C47	46.89	30.00	D=104.7242
C48	46.89	30.00	D=104.7242
C49	46.89	30.00	D=104.7242
C50	46.89	30.00	D=104.7242

LINE	LENGTH	BEARING
L1	20.97	N132°42'W
L2	40.03	N43°08'11"E
L3	54.13	N56°52'17"E
L4	48.60	N21°31'24"E
L5	44.00	N45°32'02"W
L6	200.18	N02°17'40"E
L7	21.03	N02°17'40"E
L8	41.42	N02°46'30"W
L9	64.73	N44°16'30"W
L10	52.58	N22°55'40"W
L11	43.42	N02°17'40"E
L12	43.42	N02°17'40"E
L13	52.58	N02°17'40"E
L14	64.73	N44°16'30"W
L15	52.58	N22°55'40"W
L16	43.42	N02°17'40"E
L17	43.42	N02°17'40"E
L18	52.58	N02°17'40"E
L19	64.73	N44°16'30"W
L20	28.00	S77°51'07"E
L21	58.54	N68°55'05"E
L22	61.37	N32°14'33"E
L23	41.42	N02°46'30"W
L24	79.28	N44°16'30"W
L25	15.50	N40°45'13"E
L26	50.43	N67°28'22"W
L27	15.51	N71°53'50"E
L28	50.43	N67°28'22"W
L29	64.98	N02°17'40"E
L30	50.51	N02°17'40"E
L31	50.51	N02°17'40"E
L32	50.51	N02°17'40"E
L33	50.51	N02°17'40"E
L34	50.51	N02°17'40"E
L35	50.51	N02°17'40"E
L36	50.51	N02°17'40"E
L37	50.51	N02°17'40"E
L38	50.51	N02°17'40"E
L39	50.51	N02°17'40"E
L40	50.51	N02°17'40"E

- BOB
- ()
- PULL
- B.S.L.
- NOTES & LEGEND
- DENOTES 3/4" REBAR WITH HASTING CAP STAMPED P.L.S. 3570 SET ON THIS SURVEY
 - DENOTES 3/4" REBAR WITH PLASTIC CAP STAMPED P.L.S. 3570 PER 9-S-28
 - DENOTES A CALCULATED POINT ONLY, NOTHING FOUND OR SET
 - DENOTES FOUND 1/2" IRON PIPE TRACED U.S. 4570 PER 29 M-75
 - DENOTES BUILDING S/BACK LINE
 - DENOTES PUBLIC UTILITY EASEMENT
 - DENOTES PRIVATE ACCESS & P.U.E
 - DENOTES ACCESS AND P.U.E. TO BE DEDICATED TO AMADOR COUNTY
 - DENOTES FOUND 5/8" SIFEL ROAD TRAG-D U.S. 3570 PER 42 M-70
 - DENOTES OTHERWISE NOTED
 - DENOTES RECORD DATA PER 42 M-70



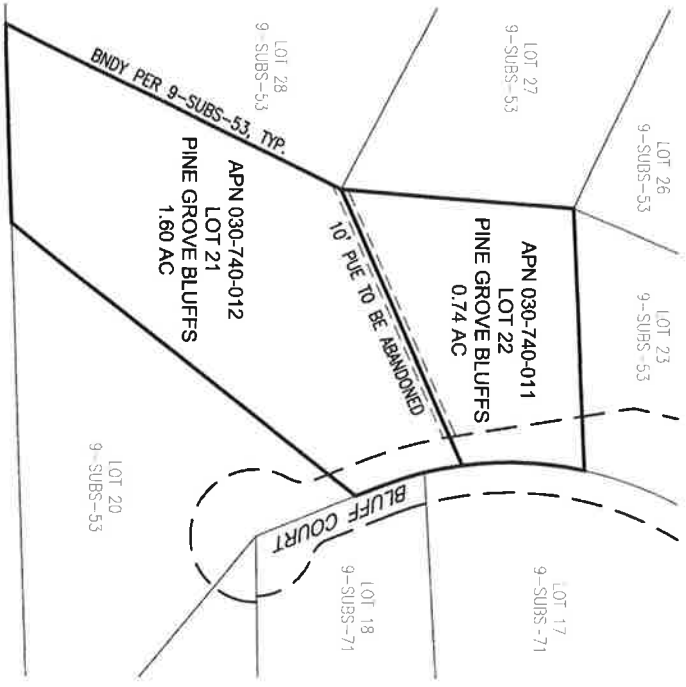
FINAL SUBDIVISION MAP No. 123
PINE GROVE BLUFFS
 PHASE I, a California Corporation
 DEL RAPINI CONSTRUCTION, INC.
 2003015687 and 2005012391
 BEING A PORTION OF THE S.W. 1/4 SECTION 33 AND THE S.E. 1/4 SECTION 32,
 T. 7 N., R. 12 E., M.D.M.,
 COUNTY OF AMADOR, STATE OF CALIFORNIA

TOMA & ASSOCIATES INC.
 ENGINEERING - SURVEYING - PLANNING
 41 Summit Street, Jackson, CA 95602
 (209) 223-0195

January, 2008



Scale: 1" = 100'

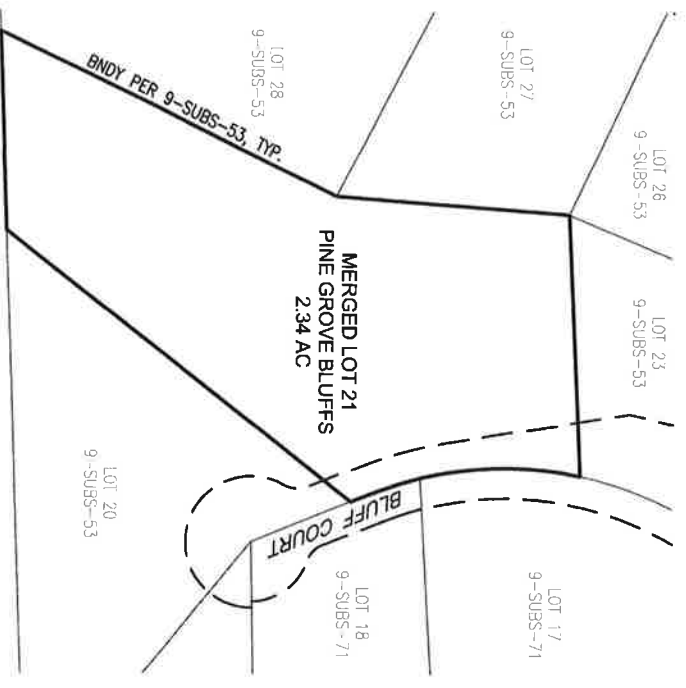


PINE GROVE BLUFFS PHASE 1
SEE 9-SUBS-53

BEFORE



Scale: 1" = 100'



PINE GROVE BLUFFS PHASE 1
SEE 9-SUBS-53

AFTER



TOMA & ASSOCIATES INC.

ENGINEERING - SURVEYING - PLANNING
41 Summit Street, Jackson, CA 95642
(209) 223-0156

EXHIBIT MAP RAPINI

PROPOSED MERGER No. 1

PORTION OF SECTION 32, T. 7 N., R. 12 E., M. D. M.
AMADOR COUNTY, CALIFORNIA

DATE: 7.25.2023
SCALE: 1" = 100'
DRAWN BY: GMW
JOB NO.: 2105-18
SHEET 1
OF 1 SHEET

3rd checks 8/9/23