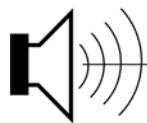




Jackson Valley Quarry Noise Presentation

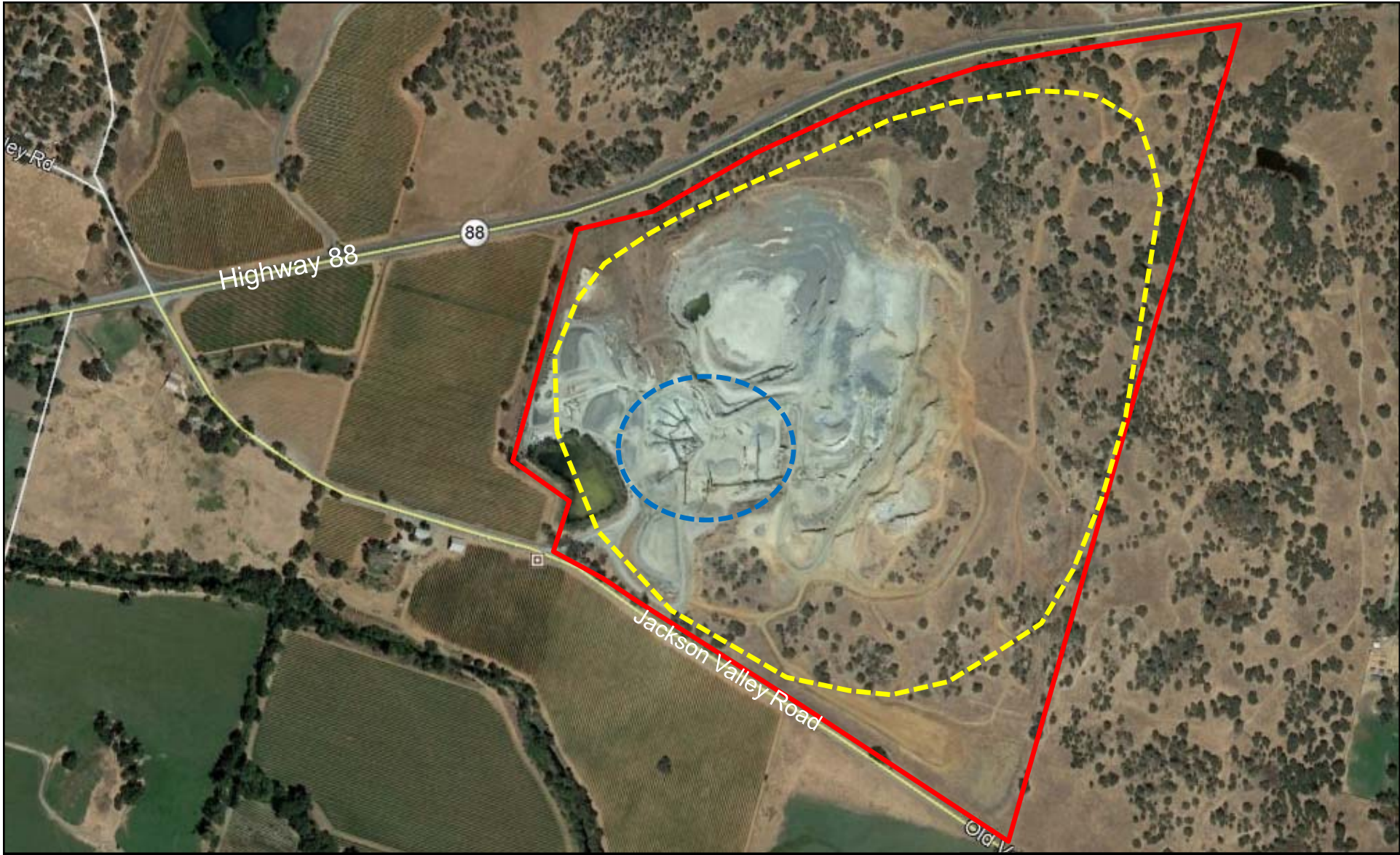
Amador County Technical Advisory Commission

November 2, 2023






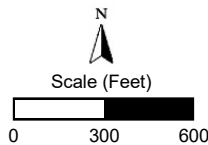
BOLLARD

Acoustical Consultants



Legend

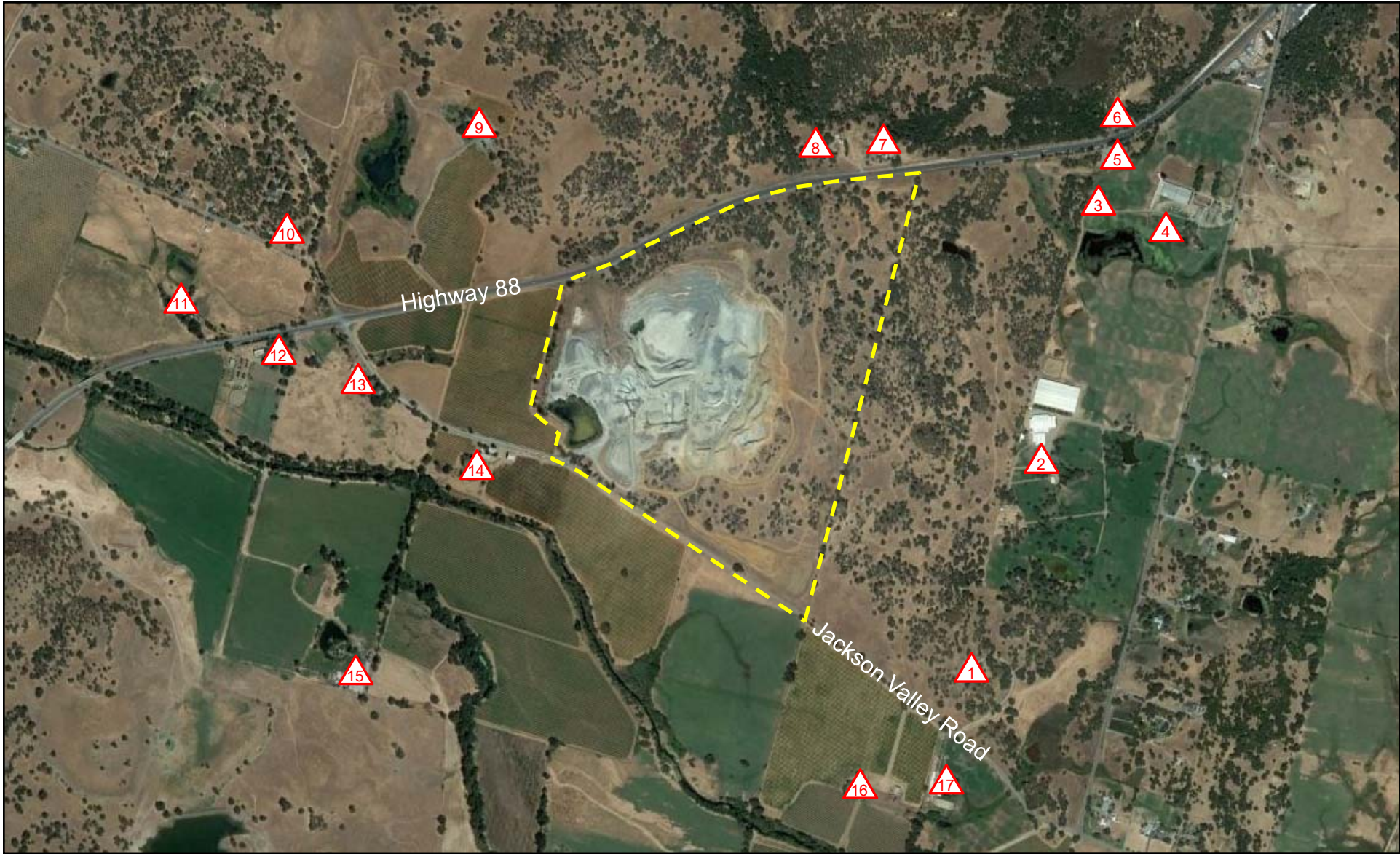
-  Processing Area
-  Ultimate Mine Disturbance Area
-  Site Boundary



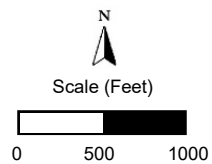
Jackson Valley Quarry
Amador County, CA

Figure A





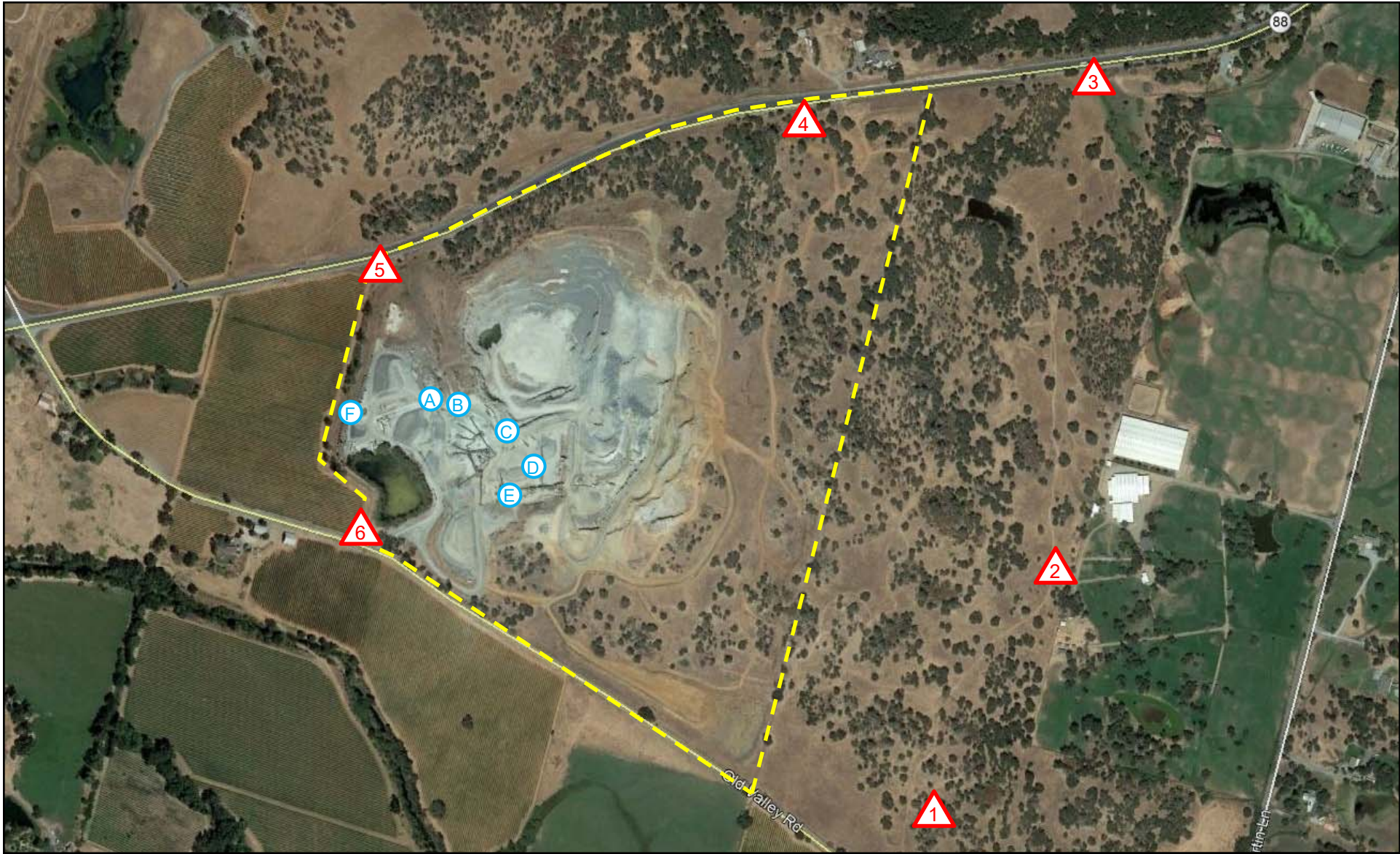
The 17 Nearest Noise-Sensitive Receptors were Identified and Analyzed in the Noise Study



Jackson Valley Quarry
 Amador County, CA
 Nearest Noise Sensitive Receptors

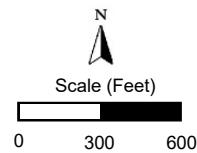
Figure B





Legend

- Ⓝ Processing Equipment Noise Measurement Locations
- ⚠ Ambient Noise Measurement Locations



Jackson Valley Quarry

Amador County, CA

Noise & Vibration Measurement Locations

Figure C





Jackson Valley Quarry

Amador County, CA

Ambient Noise Survey Photos

Figure D





Jackson Valley Quarry
Amador County, CA
Processing Equipment Noise Survey Photos

Figure E





Noise mitigation measures developed for 24-hour operations will be implemented at all crushers and screen decks despite not being required.

Jackson Valley Quarry

Amador County, CA

Crusher Noise Curtain

Figure F



Effects of Weather on Sound Propagation

- ❑ “Standard Day” atmospheric conditions (59 degrees F & 70% relative humidity), were used to model sound propagation from the project site to the residents, per industry standard convention.
- ❑ Average daytime temperatures historically range from 49 to 87 degrees in Amador County (Westover Field Amador County Airport data).
- ❑ Increasing from 59 to 100 degrees results in less than 1 dB change in noise levels 1,000 feet away.
- ❑ Decreasing from 59 to 32 degrees results in less than 1 dB change in noise levels 1,000 feet away.
- ❑ Lower humidity results in slightly lower sound propagation over distance.
- ❑ Wind in the area has historically been 1-8 mph 80% of the time and variable in direction. Subtle variations in wind do not appreciably affect sound transmission.

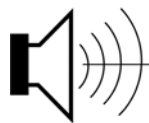
Critical Components of Noise Analysis

- ❑ Extensive ambient noise surveys (6 days at 6 locations).
- ❑ Comprehensive monitoring of noise from all project components:
(excavation, conveyors, crushers, screens, trucks, etc.).
- ❑ Local topography & ground cover was included in the state-of-the-art 3D noise prediction model.
- ❑ Atmospheric conditions were accounted for in the noise model.
- ❑ Off-site traffic noise was fully modelled (including project trucks).

Critical Conclusions of the Noise Impact Analysis

- ❑ The Project complies with all applicable noise standards of the Amador County General Plan.
- ❑ The Project complies with the existing use permit noise standards at all property lines.
- ❑ The project satisfies the requirements of the California Environmental Quality Act (CEQA).
- ❑ The applicant/operator is proposing to include noise mitigation identified as being required for nighttime operations even though nighttime operations are no longer being proposed.

Questions?



BOLLARD

Acoustical Consultants