

SGI IONE QUARRY EXPANSION PROJECT

DRAFT ENVIRONMENTAL IMPACT REPORT SUMMARY

SEPTEMBER 10, 2024

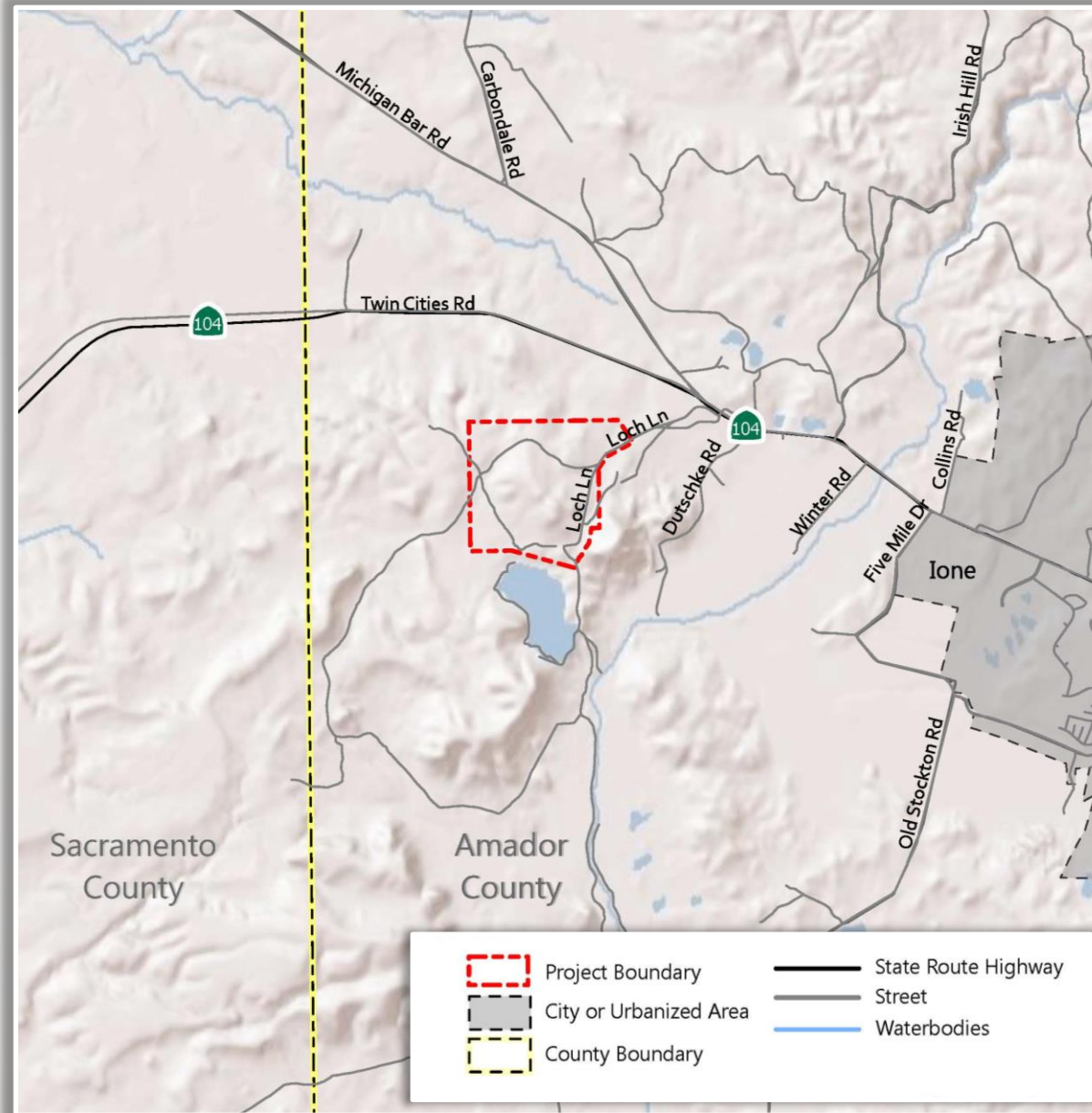
PRESENTATION OUTLINE

- Introductions
- Project Overview
- Environmental Review Process *(to date)*
- Draft Environmental Impact Report Summary
- Next Steps

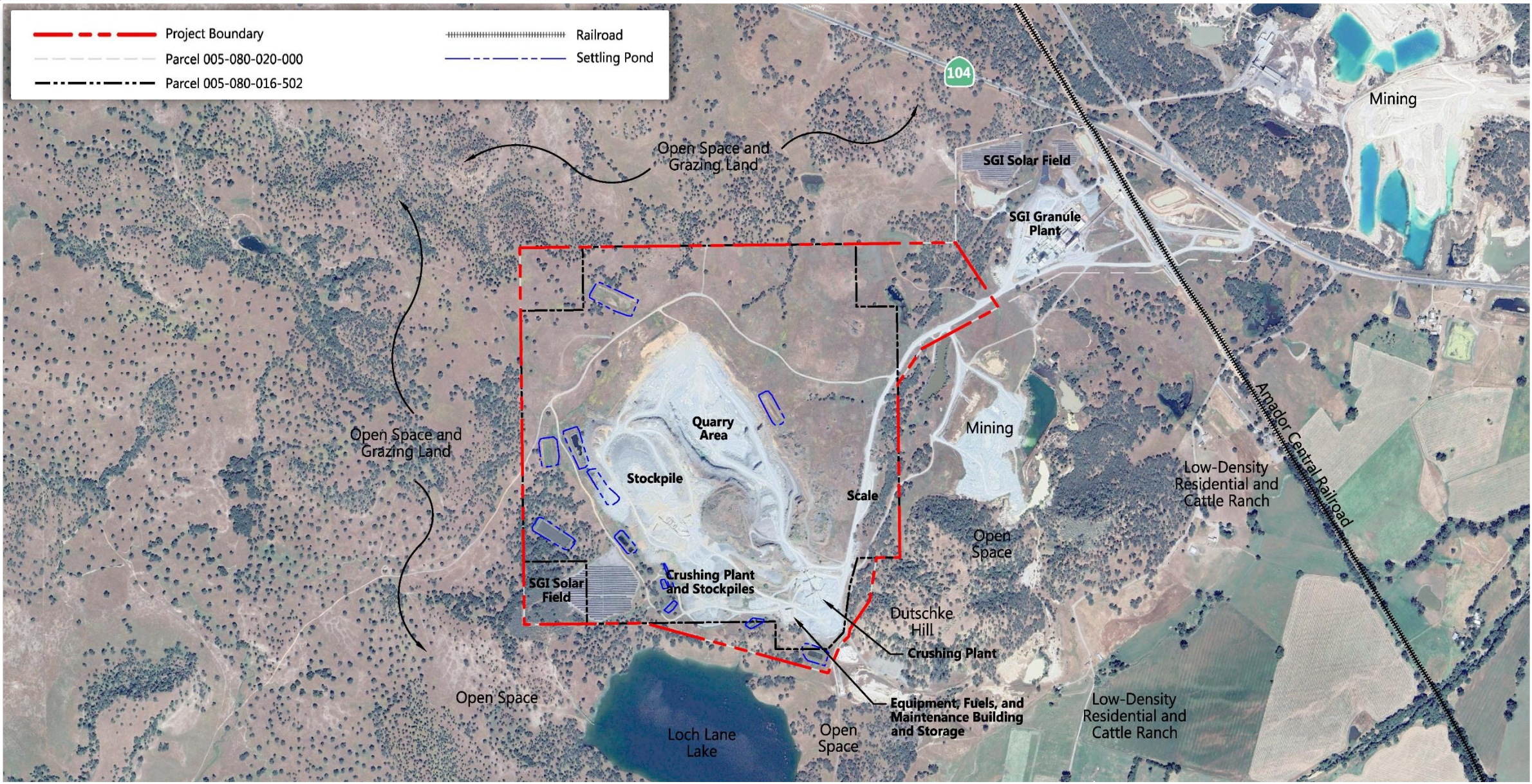
INTRODUCTIONS

- Benchmark Resources
 - Andrew White, Principal
 - Monika Krupa, Project Manager

PROJECT OVERVIEW - LOCATION



PROJECT OVERVIEW – EXISTING CONDITIONS



PROJECT OVERVIEW – EXISTING CONDITIONS

- Use Permit and Reclamation Plan to Allow Mining (1989)
- Mining Operations Typical of Hard-rock Mining
- Three Material Types Encountered During Mining:
 - Overburden:
 - Stripped and Placed in Adjacent Stockpile
 - Cap Rock:
 - Removed and Placed in Adjacent Stockpile
 - Suitable Construction Aggregate
 - Minimum 100,000 Tons/Year Processed and Shipped Off-site
 - Hard Rock:
 - Processed On-site and Transported to Adjacent Granules Plant

PROJECT OVERVIEW – EXISTING CONDITIONS

- Annual Average Production: 600,000 Tons
- Water Source: Private Well and Stormwater
- Quarry Facilities Include Processing Equipment, Maintenance Shop, Scale, and Scalehouse

PROJECT OVERVIEW – SUMMARY

- Expand quarry surface disturbance area and depth to access additional reserves.

Status	Quarry		Stockpile		Ancillary Facilities
	Acreage	Depth	Acreage	Height	Acreage
Existing	41	325 ft msl	52	515 ft msl	6
Proposed	136	-280 msl	86	560 msl	68

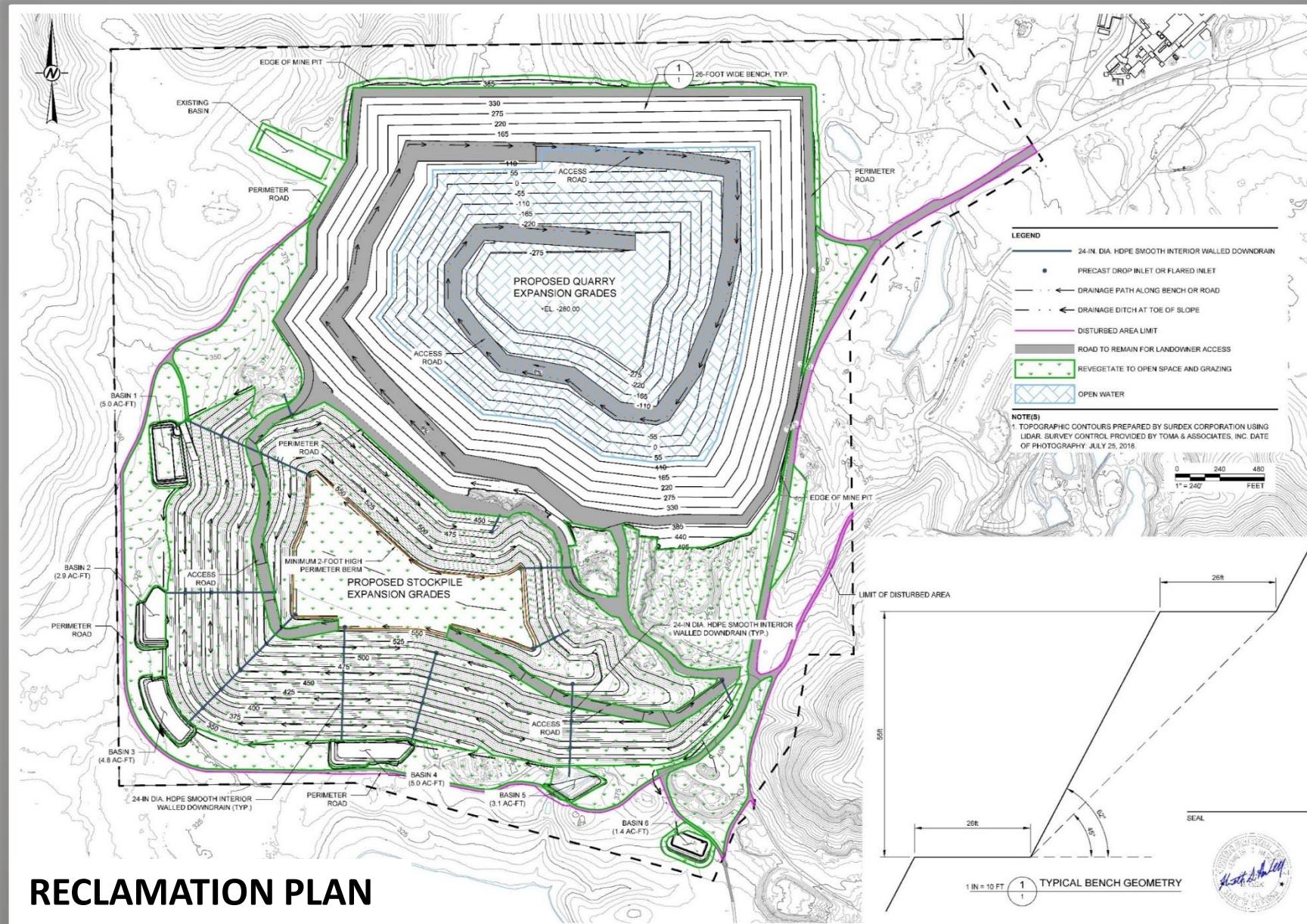
- Continued mining to support adjacent, separately permitted granule production facility.
- Modify existing stormwater detention facilities to accommodate quarry and stockpile expansion.
- Extend termination date of use permit to 2175 (currently 2075).
- No changes in material removal or processing activities or increase in annual production.

PROJECT OVERVIEW – SUMMARY

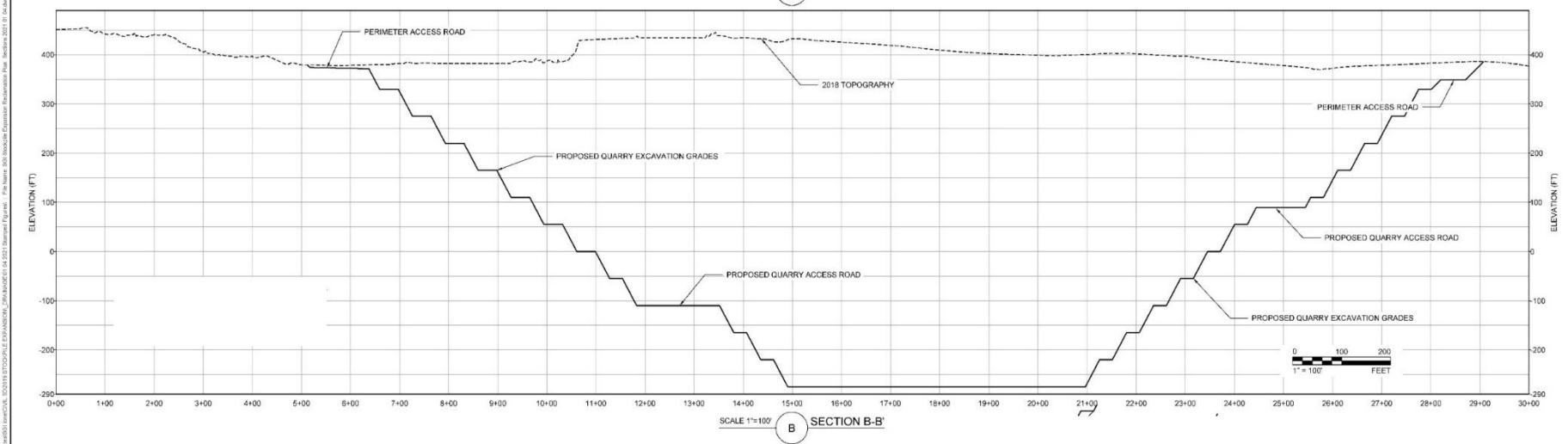
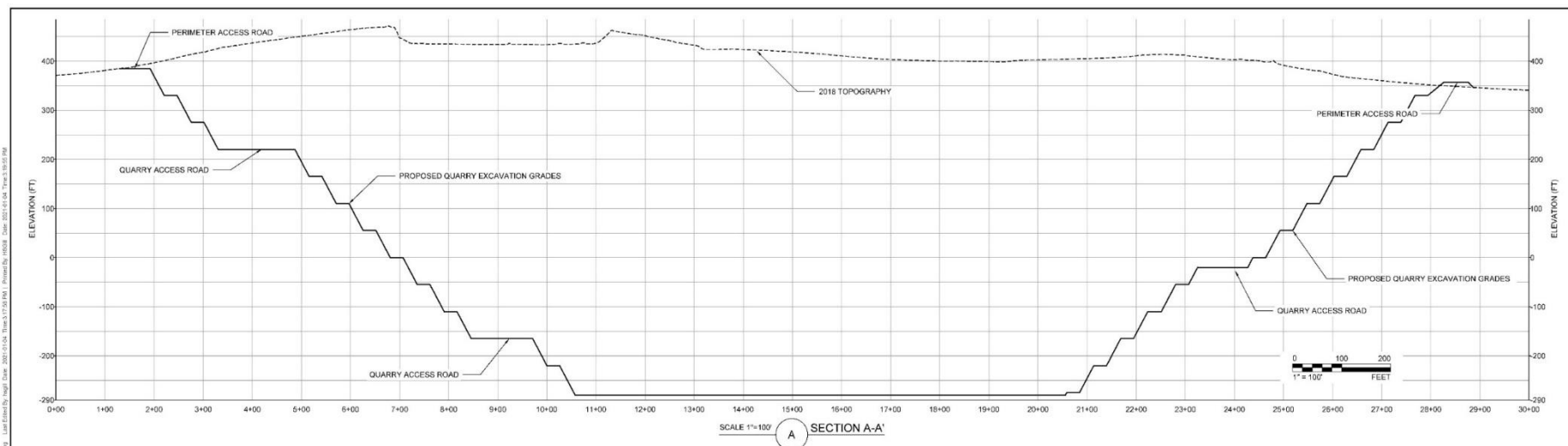
RECLAMATION PLAN

- End use of open space, grazing, and open water (no change from approved reclamation plan).
- All mobile equipment and ancillary facilities removed.
- Revegetation Will Include:
 - Stockpile and ancillary disturbance areas.
 - Seed mix consistent with existing vegetation community.
- Quarry Reclamation:
 - Highwall/benches and primary internal access roads will not be revegetated.
 - Bottom will fill with surface and groundwater to form lake.
- Updated reclamation plan meets current SMARA standards.

PROJECT OVERVIEW – SUMMARY



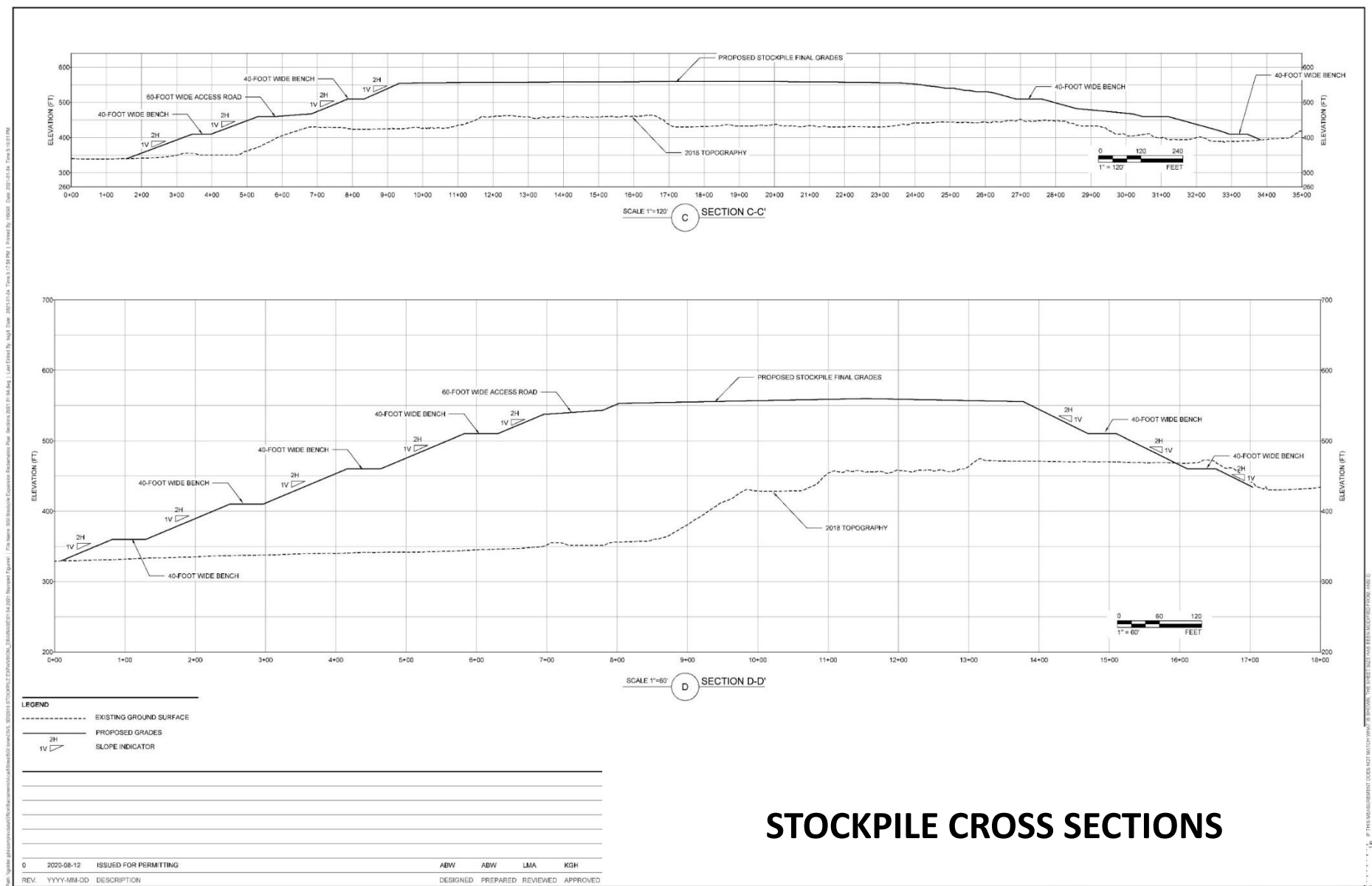
PROJECT OVERVIEW – SUMMARY



QUARRY CROSS SECTIONS

0	2020-06-12	ISSUED FOR PERMITTING	ABW	ABW	LMA	KGH
REV	YYYY-MM-DD	DESCRIPTION	DESIGNED	PREPARED	REVIEWED	APPROVED

PROJECT OVERVIEW – SUMMARY

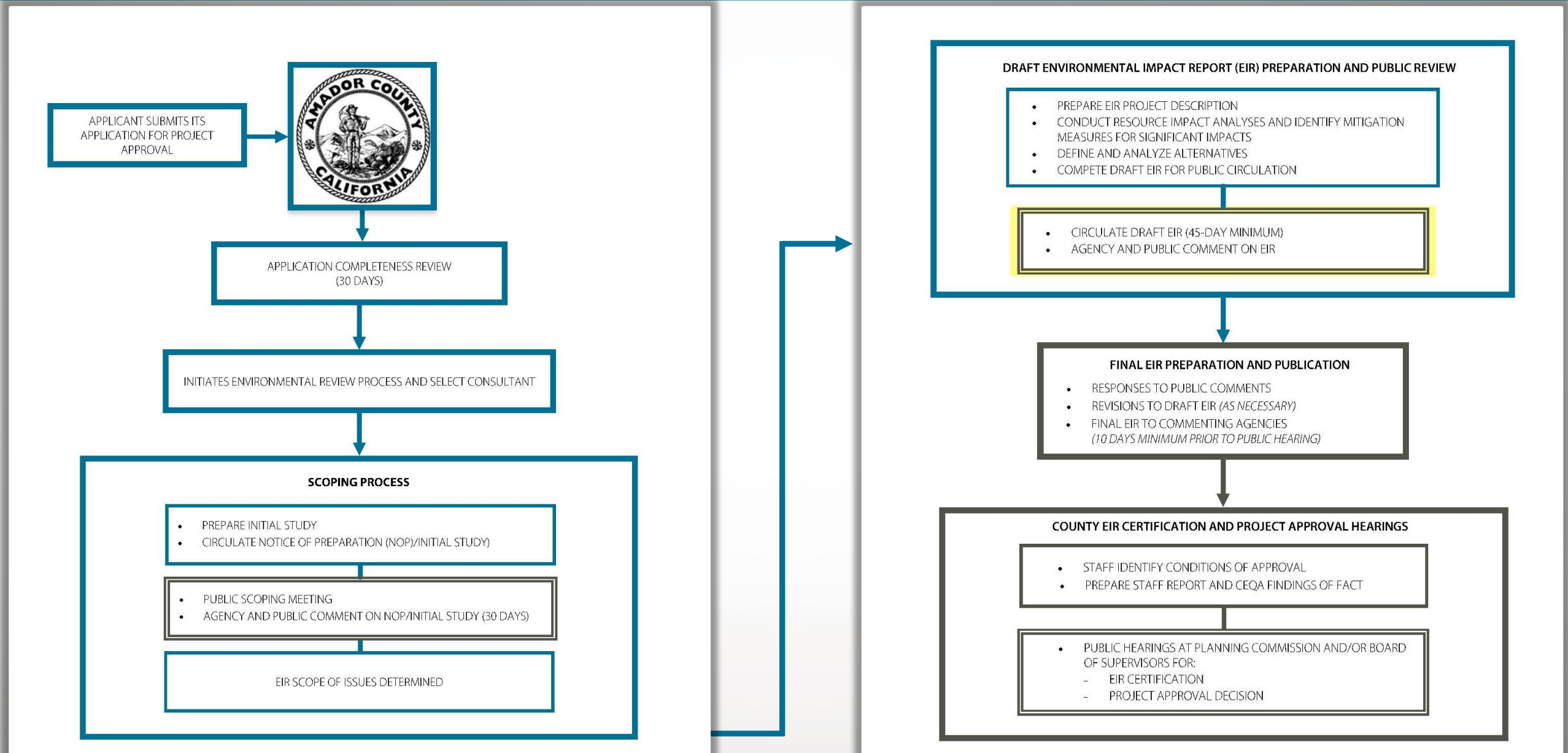


STOCKPILE CROSS SECTIONS

ENVIRONMENTAL REVIEW – PROCESS TO DATE

- Conditional Use Permit & Reclamation Plan Amendment Application Submitted in February 2021
- NOP Circulated on September 14, 2021
- Scoping Meeting on October 5, 2021
- DEIR Prepared October 2021 – July 2024
- DEIR Circulated August 6, 2024 – October 7, 2024

ENVIRONMENTAL REVIEW – PROCESS



ENVIRONMENTAL REVIEW – DRAFT EIR SUMMARY

Resource Topic	Technical Study	Consultant
Aesthetics	Aesthetics Technical Study	Benchmark Resources
Air Quality	Air Quality & Greenhouse Gas Emissions Model	Dudek
Biological Resources	Biological Resources Assessment Jurisdictional Delineation	WRA
Cultural Resources	Cultural Resources Report Technical Study	WSP/Golder
Energy	Energy Use Model Health Risk Assessment Model	Dudek
Geology & Soils	Geology & Soils Assessment Slope Stability Analysis	WSP/Golder
Greenhouse Gas Emissions	Air Quality & Greenhouse Gas Emissions Model	Dudek
Hydrology & Water Quality	Hydrology & Water Quality Analysis Report Water Supply Assessment Drainage Analysis	EMKO Environmental
Land Use & Planning	NA	NA
Noise	Environmental Noise & Vibration Analysis	Bollard Acoustical
Transportation	Transportation Assessment	Dudek
Tribal Cultural Resources	NA	NA

NA – no stand-alone technical study was prepared, analysis of potential impacts included in applicable Draft EIR section.

ENVIRONMENTAL REVIEW – DRAFT EIR SUMMARY

Resource Topic	Potential Impacts Evaluated	Mitigation Measures Recommended	Significant & Unavoidable Impacts
Aesthetics	4	-	-
Air Quality	4	-	-
Biological Resources	6	12	-
Cultural Resources	2	3	-
Energy	2	-	-
Geology & Soils	10	3	-
Greenhouse Gas Emissions	2	-	-
Hydrology & Water Quality	9	3	-
Land Use & Planning	2	-	-
Noise	4	-	-
Transportation	4	-	-
Tribal Cultural Resources	1	3	-
Cumulative Impacts	12	22	-

ENVIRONMENTAL REVIEW – DRAFT EIR SUMMARY

- Biology
 - Undisturbed portions of the site mostly non-native annual grassland, blue oak woodland, and limited seasonal wetlands.
 - Potential impacts to various special status plants, wildlife species, birds, and “waters.”
 - Mitigation measures require preconstruction surveys, agency permitting if identified onsite, and monitoring and management plans.
- Cultural/ Tribal Cultural Resources
 - Two resources identified within project boundary but outside area of surface disturbance.
 - Mitigation measures provided for cultural resources awareness training in the event of unidentified resource discovery.

ENVIRONMENTAL REVIEW – DRAFT EIR SUMMARY

- Geology & Soils
 - Small portion of mine expansion area in Valley Springs formation (not hard rock).
 - Mitigation measures require periodic inspection of mined slopes and slopes in Valley Springs formation shall be shallower unless additional geotechnical analysis conducted.
- Hydrology & Water Quality
 - Mine expansion will result in greater quarry water capture requiring discharge to existing settling ponds and eventual ponding of water in quarry upon reclamation.
 - Mitigation measures require water quality monitoring program with various requirements for sampling, analysis, parameters, and treatment.

NEXT STEPS

- Draft EIR public comment period ends October 7th, 2024
- Preparation of Final EIR
- Preparation of Staff Report, Mitigation Monitoring and Reporting Program, and Findings, and
- Public hearings and County Decision on Project